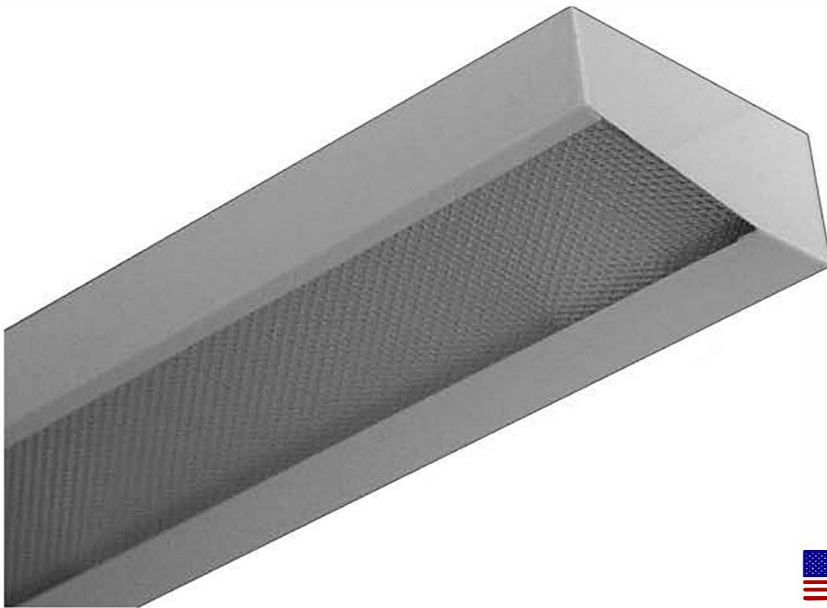


# LED T8 - WALL BRACKETS

## BAN100 SERIES

### Angled Wall Bracket / Under Cabinet



- Angled Wall Bracket / Under Cabinet Luminaire For LED T8 Internal Driver Light Tube (by Others)
- 20 Gauge Cold Rolled Steel Housing
- Frameless Lens
- Welded And Painted After Fabrication
- Available With:
  - Heavy Duty Safety Switch
  - Custom Colors



**LOS ANGELES LIGHTING MFG. CO.**

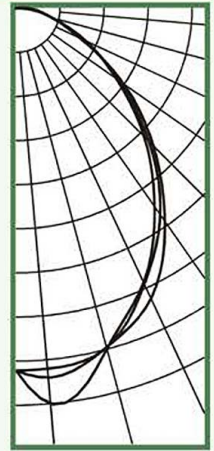
10141 OLNEY ST. / EL MONTE, CA 91731

<http://www.lalighting.com>

**TEL : 626-454-8300 FAX : 626-454-8399**

BAN100-2-4L-PA-LED8

TEST NO.=LA-T1836  
 LAMP TYPE=LED T8, 4'  
 NO. OF LAMP=2  
 LUMENS PER LAMP=1300  
 WATTS PER LAMP=15  
 BALLAST FACTOR=1  
 PHOTOMETRY TYPE=C



#### CANDLEPOWER

Angle	End	45	Cross
0	770	770	770
5	843	768	788
15	749	746	745
25	643	647	680
35	514	536	553
45	386	400	414
55	260	268	279
65	164	160	152
75	80	80	81
85	43	37	26
90	24	14	4
95	6	3	0
105	0	0	0
115	0	0	0
125	0	0	0
135	0	0	0
145	0	0	0
155	0	0	0
165	0	0	0
175	0	0	0
180	0	0	0

#### ZONAL LUMEN SUMMARY

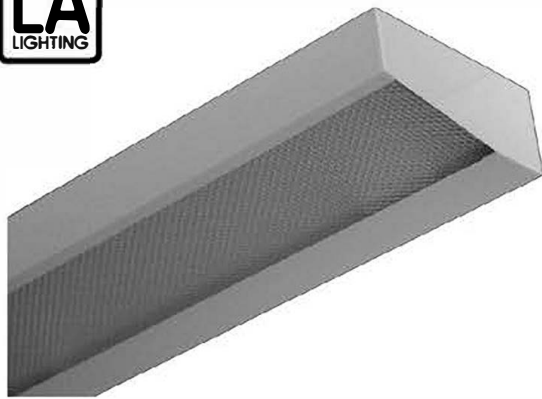
DEGREES	LUMENS	% LAMP	% FIXTURE
0-30	590	22.7	33.5
0-40	926	35.6	52.6
0-60	1477	56.8	84.0
0-90	1752	67.4	99.6
90-120	6	0.2	0.4
90-150	6	0.2	0.4
90-180	6	0.2	0.4
0-180	1759	67.6	100.0

Luminaire Efficiency = 67.6%

#### SPACING CRITERION

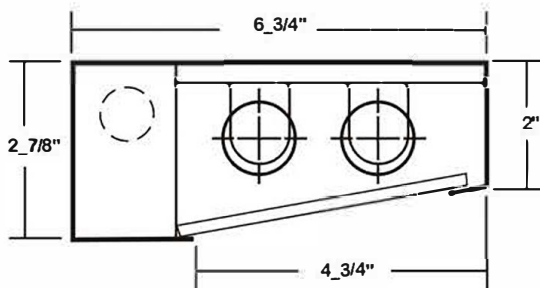
ALONG	ACROSS
1.13	1.19

# LED T8 - WALL BRACKETS



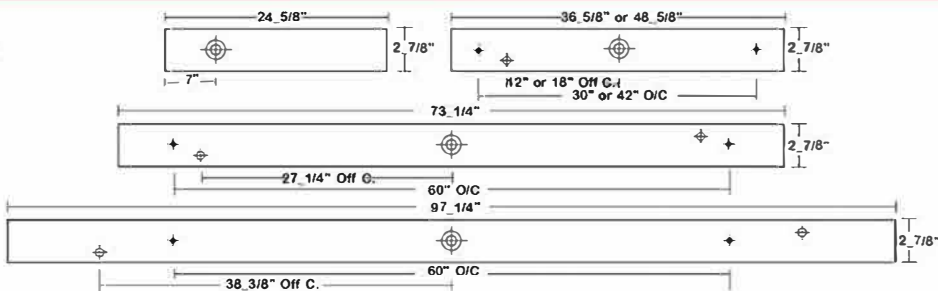
## BAN100 SERIES - LED T8

### CROSS SECTION



### BACK PLATE

- ◆ 11/16" STEM MTG. K.O.
- ⊕ 7/8" OFFSET K.O.
- ⊕ 2" K.O.



### CATALOG NUMBER

	NOMINAL TOTAL LENGTH	LAMPS		NOMINAL TOTAL LENGTH	LAMPS
BAN100-1-2LI	2'	1	BAN100-1-6LIT	6'	2
BAN100-1-2LR	2'	1	BAN100-1-6LRT	6'	2
BAN100-1-3LI	3'	1	BAN100-1-8LIT	8'	2
BAN100-1-3LR	3'	1	BAN100-1-8LRT	8'	2
BAN100-1-4LI	4'	1	BAN100-2-2LI	2'	2
BAN100-1-4LR	4'	1	BAN100-2-2LR	2'	2

### SAFETY SWITCH

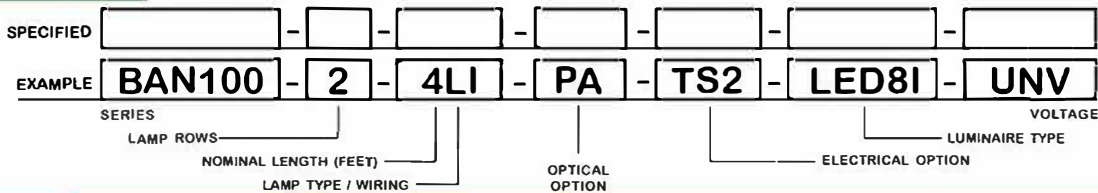
	NOMINAL TOTAL LENGTH	LAMPS
BAN100-2-3LI	3'	2
BAN100-2-3LR	3'	2
BAN100-2-4LI	4'	2
BAN100-2-4LR	4'	2
BAN100-2-6LIT	6'	4
BAN100-2-6LRT	6'	4
BAN100-2-8LIT	8'	4
BAN100-2-8LRT	8'	4



### TS2 - LED Luminaire On/Off Safety Switch

- Easily accessible on exterior of wire way.
- Allows individual fixture to be switched ON/OFF during re-lamping or Maintenance.
- Prevents damage to lamp and electrical shock during lamping and re-lamping.
- Allows safe entry to wire way channel where power connector can be disconnected for maintenance to fixture.

### ORDERING GUIDE



### LAMP TYPE

**LI = LED T8 internal driver light tube.**  
Both ends powered.  
Shunted sockets used.



**LR = LED T8 internal driver light tube.**  
Single end powered.  
Non-shunted sockets used.



### OPTIONS AND ACCESSORIES

#### COLOR OPTIONS

- White Standard
- Black
- Note: Other Colors Available

SUFFIX  
BLK

#### OPTICAL OPTIONS

- Clear Prismatic Acrylic
- FlatWhite Acrylic
- Polycarbonate Lenses
- High Impact Acrylic

SUFFIX  
PA  
FWA  
\*  
\*

#### ELECTRICAL OPTIONS

- LED Luminaire ON/OFF Safety Switch

SUFFIX  
TS2  
\*

\*See Appropriate Reference Page

### SPECIFICATIONS

- TYPE
- CONSTRUCTION
- FINISH
- OPTICS
- WIRING
- LABELS

Wall / ceiling mounted luminaire for LED T8 internal driver light tube (s)\*\*. May be used in task lighting applications.  
20ga. cold rolled steel welded housing.  
Baked white powder coated finish, minimum reflectance 90%, painted after fabrication.  
Frameless lay-in lens. Clear prismatic acrylic lens standard. Extensive variety of lenses and diffusers available.  
Operates LED T8 internal driver light tube(s)\*\*.  
UL Listed. Suitable for damp locations.

\*\* Lamp(s) by others.

