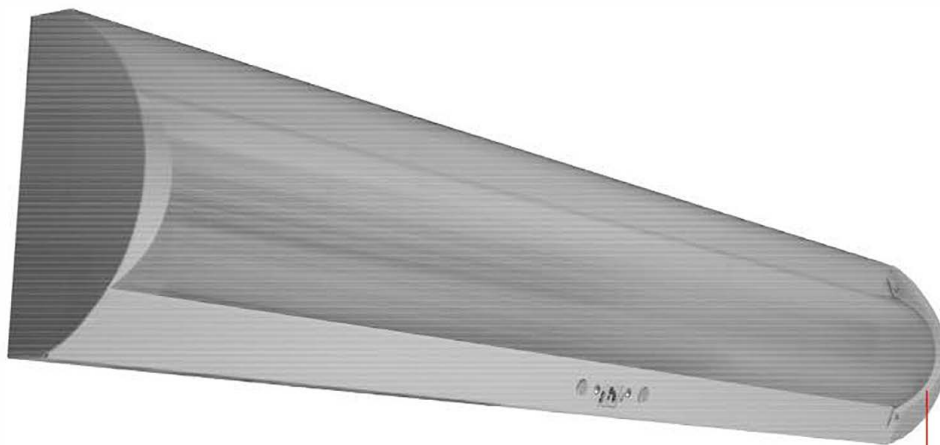


LED T8 - WALL BRACKETS

BSW100 SERIES

Sensor Controlled Stairwell Luminaire



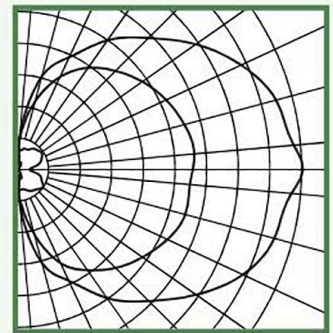
Lens Retainer & Tamper Proof Screws Optional.



- 1 or 2 Lamp Sensor Controlled Stairwell Luminaire For LED T8 Internal Diver Light Tube (by Others)
- Ultrasonic Occupancy Sensor for Vertical Wall Mount Applications
- 22 ga. Cold Rolled Steel Welded Construction
- Snap-On Radial Acrylic Lens
- Baked White Powder Coated Finish, Paint After Fabrication
- Available With:
 - Heavy Duty Safety Switch
 - Lens Retainer & Tamper Proof Screws

BSW100-2-4L-CARL-LED8

TEST NO.=LA-T2141
 LAMP TYPE=LED T8, 4'
 NO. OF LAMP=2
 LUMENS PER LAMP=1300
 WATTS PER LAMP=15
 BALLAST FACTOR=1
 PHOTOMETRY TYPE=C



CANDLEPOWER

Angle	0	45	90	135	180
0	62	62	62	62	62
5	133	101	58	21	21
15	279	200	57	27	25
25	346	293	65	15	6
35	441	344	72	6	0
45	520	389	78	1	0
55	610	426	84	0	0
65	693	461	71	0	0
75	740	483	61	0	0
85	765	481	34	0	0
90	795	487	32	0	0
95	772	493	35	0	0
105	745	480	59	0	0
115	388	457	72	0	0
125	609	426	79	0	0
135	519	388	76	2	0
145	443	348	71	6	0
155	349	289	61	17	8
165	278	207	60	18	21
175	130	109	54	20	19
180	62	62	62	62	62

ZONAL LUMEN SUMMARY

DEGREES	LUMENS	% LAMP	% FIXTURE
0-30	101	3.9	4.1
0-40	201	7.7	8.2
0-60	525	20.2	21.3
0-90	1231	47.3	50.0
90-120	707	27.2	28.7
90-150	1130	43.5	45.9
90-180	1230	47.3	50.0
0-180	2461	94.7	100.0

Luminaire Efficiency = 94.7%

SPACING CRITERION

ALONG	ACROSS
5.28	1.79



LOS ANGELES LIGHTING MFG. CO.

10141 OLNEY ST. / EL MONTE, CA 91731

<http://www.lalighting.com>

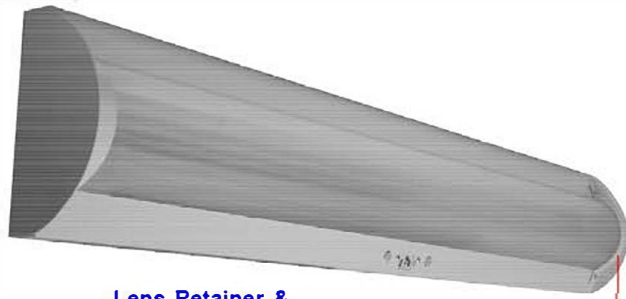
TEL : 626-454-8300 FAX : 626-454-8399

LED T8 - WALL BRACKETS

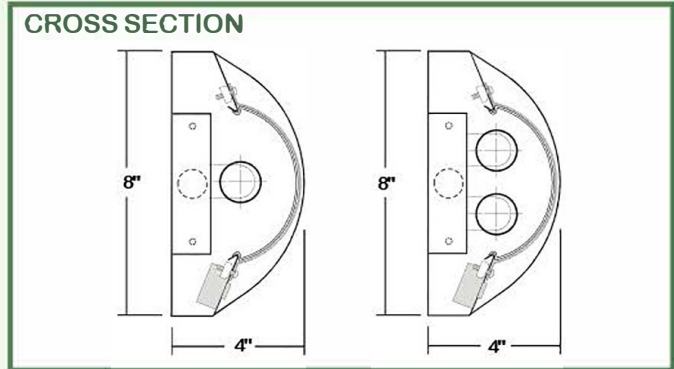
STAIRWELL LUMINAIRE - SENSOR CONTROLLED



BSW100 SERIES - LED T8

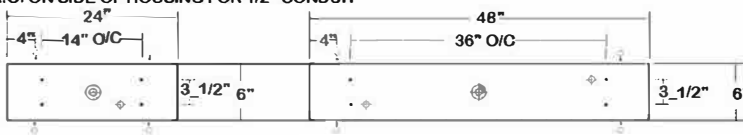


Lens Retainer & Tamper Proof Screws Optional.



BACK PLATE

- 3/8" K.O. ⊕ 7/8" OFFSET K.O. ⊕ 2" K.O.
- 7/8" K.O. ON SIDE OF HOUSING FOR 1/2" CONDUIT



MOTION SENSOR

MS - MOTION SENSOR

- Ultrasonic occupancy sensor for vertical wall mount applications.
- Sensor mounted at 20° from vertical for optimum sensor performance.
- 24' diameter coverage at 8' mounting height.
- 5 to 30 minutes time delay adjustability.

CATALOG NUMBER

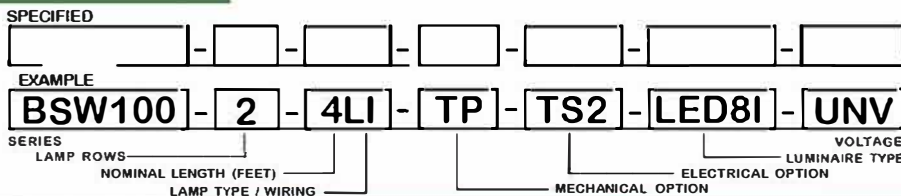
	NOMINAL LENGTH	TOTAL LAMPS		NOMINAL LENGTH	TOTAL LAMPS
BSW100-1-2LI	2'	1	BSW100-2-2LI	2'	2
BSW100-1-2LR	2'	1	BSW100-2-2LR	2'	2
BSW100-1-4LI	4'	1	BSW100-2-4LI	4'	2
BSW100-1-4LR	4'	1	BSW100-2-4LR	4'	2

SAFETY SWITCH

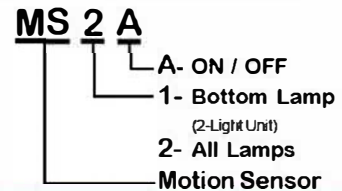


- TS2 - LED Luminaire On/Off Safety Switch**
- Easily accessible on exterior of wire way.
 - Allows individual fixture to be switched ON/OFF during re-lamping or Maintenance.
 - Prevents damage to lamp and electrical shock during lamping and re-lamping.
 - Allows safe entry to wire way channel where power connector can be disconnected for maintenance to fixture.

ORDERING GUIDE



SENSOR CONFIGURATION



LAMP TYPE

LI = LED T8 internal driver light tube.
Both ends powered.
Shunted sockets used.



LR = LED T8 internal driver light tube.
Single end powered.
Non-shunted sockets used.



OPTIONS AND ACCESSORIES

- **MECHANICAL OPTIONS**
Lens Retainer & Tamper Proof Screws (Hex Socket w/ Post)

SUFFIX
TP

- **ELECTRICAL OPTIONS**
LED Luminaire ON/OFF Safety Switch

SUFFIX
TS2

*See Appropriate Reference Page

SPECIFICATIONS

** Lamp(s) by others.

- **TYPE**: 1 or 2 lamps sensor controlled stair well luminaire for LED T8 internal driver light tube (s)**.
- **CONSTRUCTION**: 22 ga. cold rolled steel welded housing.
- **FINISH**: Baked white powder coated finish, minimum reflectance 90%, painted after fabrication.
- **OPTICS**: 4' snap-on acrylic lens. Two lenses per 8' fixture.
- **SENSOR**: Ultrasonic occupancy sensor for vertical wall mount applications. 24' diameter coverage at 8' mounting height. 5 to 30 minutes time delay adjustability.
- **WIRING**: Operates LED T8 internal driver light tube(s)**.
- **LABELS**: U.L Listed. Suitable for damp locations.

