

# LED T8 - BAYLIGHTER™

## EBY350 SERIES

### High Bay Luminaire



- High Bay Luminaire For LED T8 Internal Driver Light Tube (by Others)
- T-Hinge and spring Loaded Latch
- Removable Wiring Accessed Plate
- Stem, Cable, and Chain Mountable
- Quarter Turn Rotary Locking Sockets
- Door Frame Safety Cables

- Available with :
  - Heavy Duty Safety Switch Available
  - .040 Aluminum Fixture Housing
  - Variety of Lenses
  - 11ga. Wire Guard



**LOS ANGELES LIGHTING MFG. CO.**

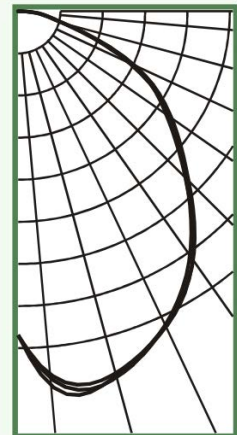
10141 OLNEY ST. / EL MONTE, CA 91731

<http://www.lalighting.com>

**TEL : 626-454-8300 FAX : 626-454-8399**

#### EBY350-6-4L-CA-LED8

TEST NO.=I.A-T1812  
 LAMP TYPE=LED T8, 4'  
 NO. OF LAMP=6  
 LUMENS PER LAMP=1300  
 WATTS PER LAMP=15  
 BALLAST FACTOR=1  
 PHOTOMETRY TYPE=C



#### CANDLEPOWER

Angle	End	45	Cross
0	2132	2132	2132
5	2471	2398	2424
15	2481	2466	2495
25	2293	2282	2280
35	1993	1999	1962
45	1553	1580	1550
55	1222	1228	1184
65	800	842	836
75	309	321	317
85	126	118	119
90	19	16	18
95	0	0	0
105	0	0	0
115	0	0	0
125	0	0	0
135	0	0	0
145	0	0	0
155	0	0	0
165	0	0	0
175	0	0	0
180	0	0	0

#### ZONAL LUMEN SUMMARY

DEGREES	LUMENS	% LAMP	% FIXTURE
0-30	1989	25.5	29.2
0-40	3238	41.5	47.6
0-60	5541	71.0	81.4
0-90	6803	87.2	99.9
90-120	5	0.1	0.1
90-150	5	0.1	0.1
90-180	5	0.1	0.1
0-180	6808	87.3	100.0

Luminaire Efficiency = 87.3%

#### SPACING CRITERION

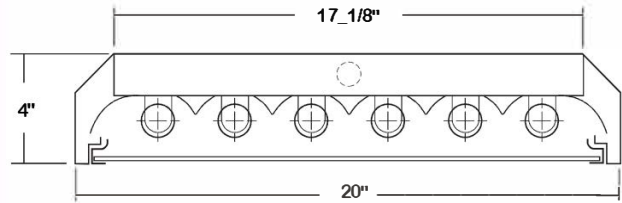
ALONG	ACROSS
1.41	1.40

**LED T8 - BAYLIGHTER™**



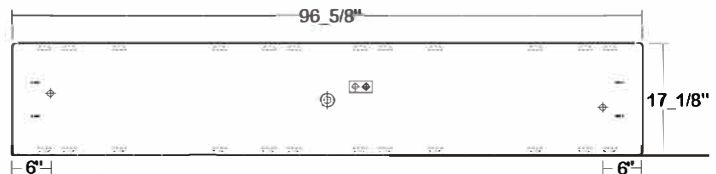
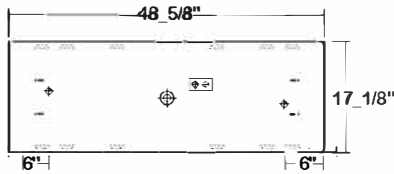
**EBY350 SERIES - LED T8**

**CROSS SECTION**



**BACK PLATE**

- V-HOOK
- ⊕ 7/8" OFFSET K.O.
- ⊕ 2" K.O.
- ⊕ ACCESS PLATE



**CATALOG NUMBER**

	NOMINAL LENGTH	TOTAL LAMPS		NOMINAL LENGTH	TOTAL LAMPS
EBY350-4-4LI	4'	4	EBY350-4-8LIT	8'	8
EBY350-4-4LR	4'	4	EBY350-4-8LRT	8'	8
EBY350-5-4LI	4'	5	EBY350-5-8LIT	8'	10
EBY350-5-4LR	4'	5	EBY350-5-8LRT	8'	10
EBY350-6-4LI	4'	6	EBY350-6-8LIT	8'	12
EBY350-6-4LR	4'	6	EBY350-6-8LRT	8'	12

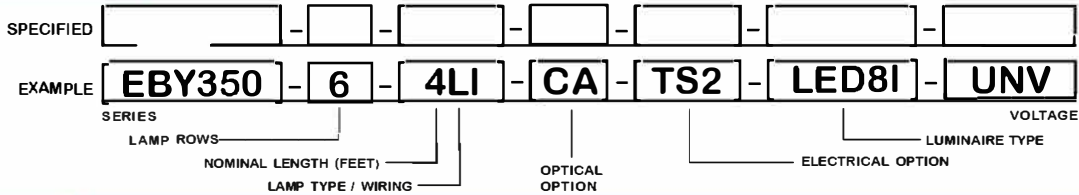
**SAFETY SWITCH**



**TS2 - LED Luminaire On/Off Safety Switch**

- Easily accessible on exterior of wire way.
- Allows individual fixture to be switched ON/OFF during re-lamping or Maintenance.
- Prevents damage to lamp and electrical shock during lamping and re-lamping.
- Allows safe entry to wire way channel where power connector can be disconnected for maintenance to fixture.

**ORDERING GUIDE**



**LAMP TYPE**

**LI = LED T8 internal driver light tube.**

Both ends powered.  
Shunted sockets used.



**LR = LED T8 internal driver light tube.**

Single end powered.  
Non-shunted sockets used.



**OPTIONS AND ACCESSORIES**

● **OPTICAL OPTIONS**

- Clear Acrylic
- Clear Prismatic Acrylic
- Flat White Acrylic
- \* Other Lens Available Upon Request

**SUFFIX**

- CA
- PA
- FWA

● **ELECTRICAL OPTIONS**

- LED Luminaire ON/OFF Safety Switch
- Motion Sensor

**SUFFIX**

- TS2
- MS

● **ACCESSORIES**

- Wire Guard - 11 Ga.
- Fixture Suspension System
- Ceiling Spacer
- 6" Leg Height V-Hook

**CAT.NO.**

- WG11-EBY350
- \*
- \*
- V6

\*See Appropriate Reference Page

**SPECIFICATIONS**

- **TYPE**
- **CONSTRUCTION**
- **FINISH**
- **DOOR FRAME**
- **OPTICS**
- **WIRE GUARDS**
- **WIRING**
- **LABELS**

High bay open light luminaire for surface, pendant, or chain mounting for LED T8 internal driver light tube (s)\*\*.  
 22 gauge cold rolled steel housing with lowered vents on top for heat removal.  
 Quarter turn rotary locking lamp holders standard. (20 ga. C.R.S. and .040 aluminum housing available as specified)  
 Baked white polyester finish, minimum reflectance 86%. (Powder coated finish available.)  
 20 ga. cold rolled steel door frame. T-hinge and positive spring loaded latches. Safety cables attached.  
 Nom. 125 clear acrylic lens standard. Extensive variety of lenses, diffusers and louvers available.  
 11 ga. Chrome epoxy powder coated.  
 Operates LED T8 internal driver light tube (s)\*\*.  
 U.L. Listed. Suitable for damp locations.

\*\* Lamp(s) by others.

