



SPECIAL PURPOSE

FCR200 SERIES



Class 100 Clean Room Trim Flange



- Class 100 Clean Room Trim Flange Luminaire
- ISO Class 5 Equivalent
- For 1" or 1_1/2" T-Bar Ceiling
- All Parts Are Fitted And Sealed
- Welded And Painted After Fabrication
- Full Length Piano Hinge And Captive Screws
- Inverted Nominal .125 Clear Prismatic Acrylic Lens
- Suitable for Damp Locations
- Available with:
 - Fluorescent, LED and LED T8 (Internally Driven)
 - Variety of Lenses
 - Tamper Proof Screws
 - Emergency Battery Pack



Photometric Data and IES Files are Available on www.lalighting.com



LOS ANGELES LIGHTING MFG. CO.

10141 OLNEY ST. / EL MONTE, CA 91731

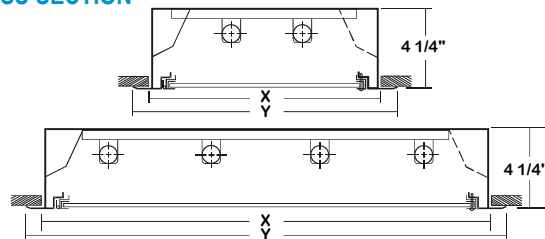
TEL : 626-454-8300 FAX : 626-454-8399

www.lalighting.com



FCR200 SERIES

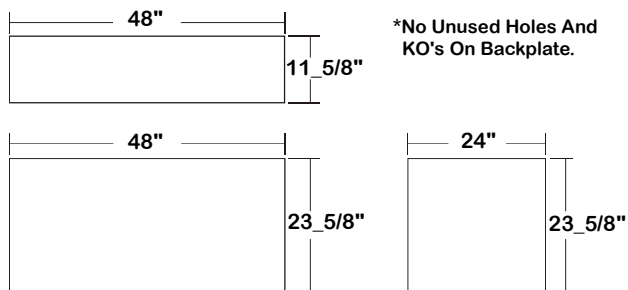
CROSS SECTION



1 X 4
Ceiling Opening X - 12_1/2" X 48_1/2"
Overall Width By Length Y - 13_5/8" X 50"

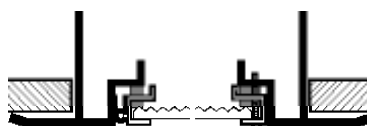
2 X 4
Ceiling Opening X - 24_1/2" X 48_1/2"
Overall Width By Length Y - 25_5/8" X 50"

BACK PLATE



DOOR FRAME INFORMATION

CROSS SECTION



EXPLANATION

1. Inverted Lens.
2. Continuous Piano Hinge.
3. Two 10-24 Captive Machine Screws.
4. Sealed With Closed Cell Neoprene Gasket.

FS W

FINISHES

- W - White Enamel
- B - Black Enamel
- N - Natural Anodized Aluminum

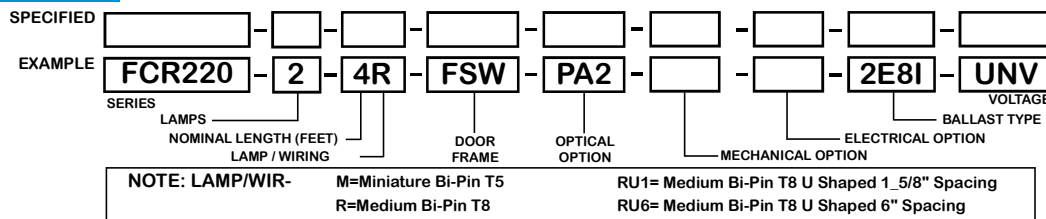
STYLES

- FS - Flat Steel

CATALOG NUMBER

	NOMINAL WIDTH X LENGTH	TOTAL LAMPS		NOMINAL WIDTH X LENGTH	TOTAL LAMPS		NOMINAL WIDTH X LENGTH	TOTAL LAMPS
FCR210-2-4M	1' X 4'	2	FCR210-2-4R	1' X 4'	2	FCR220-4-2R	2' X 2'	4
FCR220-2-2M	2' X 2'	2	FCR220-2-2R	2' X 2'	2	FCR220-2-4R	2' X 4'	2
FCR220-2-4M	2' X 4'	2	FCR220-2-2RU1	2' X 2'	2	FCR220-3-4R	2' X 4'	3
FCR220-3-4M	2' X 4'	3	FCR220-2-2RU6	2' X 2'	2	FCR220-4-4R	2' X 4'	4
FCR220-4-4M	2' X 4'	4	FCR220-3-2R	2' X 2'	3			

ORDERING GUIDE



OPTIONS AND ACCESSORIES

OPTICAL OPTIONS

- Polycarbonate Lenses
- High Impact Acrylic
- Clear Prismatic Acrylic Nom .125
- Flat White Matte Diffusers
- Dropped Opal Pans

SUFFIX
*
*
PA2
FWA
DP

MECHANICAL OPTIONS

- Tamper Proof Screws (Hex Socket With Post)

SUFFIX
TP

ELECTRICAL OPTIONS

- Emergency Battery Pack
- External Line Fusing (HLR/GLR)
- Radio Interference Filters
- Night Light

SUFFIX
BP*
ELF
RIF
NL*

BALLAST OPTIONS

- Electronic Ballasts T8
- Electronic T8 Step Dimming
- Electronic Ballast T5
- Electronic Ballast T5HO
- Electronic T5HO Step Dimming

SUFFIX
E8*
E8SD
E5
E5H
E5HSD

ACCESSORIES

- Hanger Yokes (1X4)
- Hanger Yokes (2X2 or 2X4)

CAT. NO.
HS-12
HS-24_1/2

*See appropriate reference page

SPECIFICATIONS

- TYPE
- CONSTRUCTION
- FINISH
- DOOR FRAME

Class 100 flanged square sided clean room fixture, ISO Class 5 equivalent. Applicable where a sealed ceiling situation exists.

22 ga. cold rolled steel welded housing. All parts are fitted and sealed, no unused holes or KO's.

Baked white powder coated finish, minimum reflectance 90%, painted after fabrication.

20 gauge cold rolled steel. Full length piano hinge. Captive screw catch. Door frame and lens sealed with closed cell neoprene gasket.

- OPTICS
- WIRING
- LABELS

Inverted clear prismatic acrylic lens standard, nominal .125 overall thickness.

120v 60Hz., 277v 60Hz., UNV (universal voltage 120v thru 277v.) or as otherwise specified.

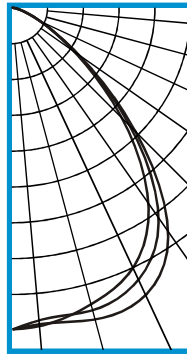
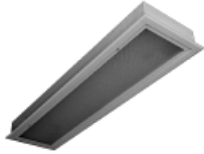
U.L. Listed. Suitable for damp locations. Compatible with UL Fire-Rated Ceiling Assemblies.



PHOTOMETRIC DATA

FCR200-3-4R-FSW-PA-E8

TEST NO.=LA-T0447-1
 LAMP TYPE=FO32T8
 NO. OF LAMP=3
 LUMENS PER LAMP=2900
 WATTS PER LAMP=32
 BALLAST FACTOR=1
 PHOTOMETRY TYPE=C



CANDLEPOWER

ANGLE	END	45	CROSS
0	2793	2793	2793
5	2773	2721	2757
15	2661	2716	2800
25	2485	2598	2747
35	2055	2210	2356
45	1332	1431	1499
55	636	664	681
65	242	246	246
75	68	70	67
85	9	9	9
90	0	0	1
95	0	0	0
105	0	0	0
115	0	0	0
125	0	0	0
135	0	0	0
145	0	0	0
155	0	0	0
165	0	0	0
175	0	0	0
180	0	0	0

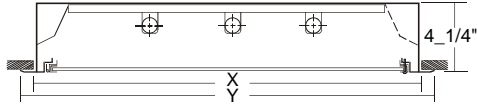
ZONAL LUMEN SUMMARY

DEGREES	LUMENS	% LAMP	% FIXTURE
0-30	2241	25.8	39.7
0-40	3628	41.7	64.2
0-60	5324	61.2	94.3
0-90	5647	64.9	100.0
90-120	0	0.0	0
90-150	0	0.0	0
90-180	0	0.0	0
0-180	5647	64.9	100.0

Lumen Output = 5647 lumens
 Luminaire Efficiency = 64.9%

SPACING CRITERION

ALONG	ACROSS
1.20	1.32



Ceiling Opening X - 24_1/2" X 48_1/2"

Overall Width By Length Y - 25_5/8" X 50"

This space is intentionally left blank.

This space is intentionally left blank.

This space is intentionally left blank.

