

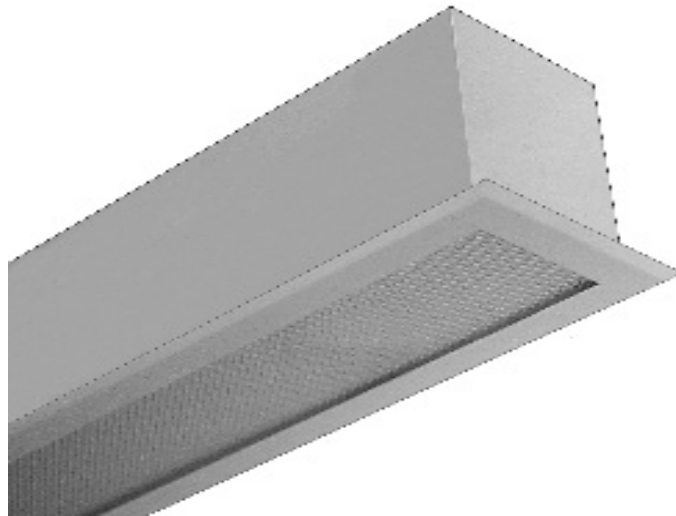


RECESSED

FFF106 SERIES



6" Width / Frameless Trim Flange



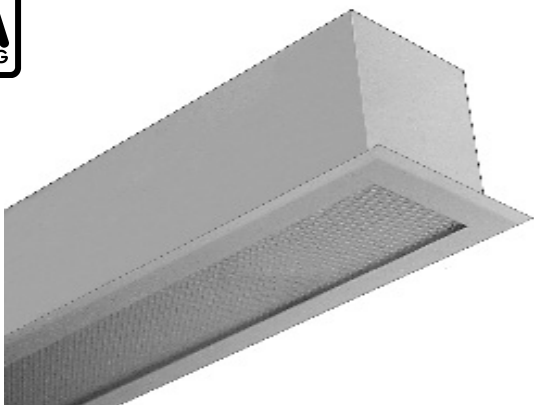
- 6" Width / Frameless Trim Flange Luminaire
- 20 Gauge Cold Rolled Steel Welded Housing
- Powder Coated Finish / Painted After Fabrication
- One Piece Welded Trim Flange Painted After Fabrication
- Suitable for Damp Locations
- Available with:
 - Fluorescent, LED and LED T8 (Internally Driven)
 - Variety of Lenses
 - Emergency Battery Pack



Photometric Data and IES Files are Available on www.lalighting.com



LOS ANGELES LIGHTING MFG. CO.
 10141 OLNEY ST. / EL MONTE, CA 91731
TEL : 626-454-8300 FAX : 626-454-8399
www.lalighting.com

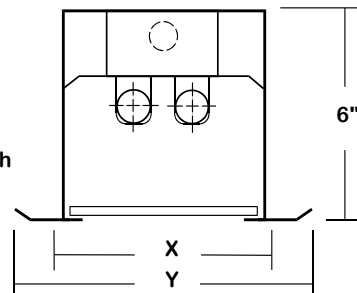


FFF106 SERIES

CROSS SECTION

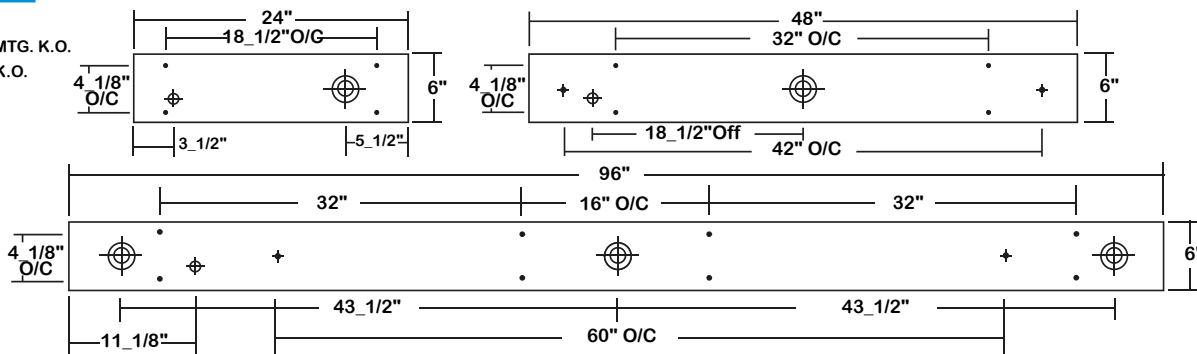
Ceiling Opening
 X - 6 1/2" x 24 1/2"
 6 1/2" x 48 1/2"
 6 1/2" x 96 1/2"

Overall Width By Length
 Y - 8" x 26 1/2"
 8" x 50 1/2"
 8" x 98 1/2"



BACK PLATE

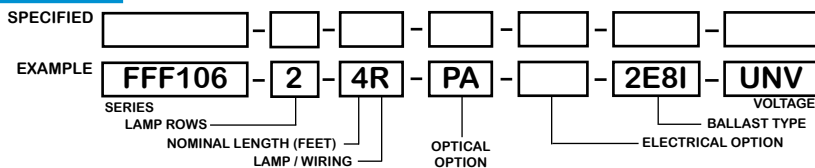
- 3/8" K.O.
- ◆ 11/16" STEM MTG. K.O.
- ⊕ 7/8" OFFSET K.O.
- ⊕ 2" K.O.



CATALOG NUMBER

	NOMINAL LENGTH	TOTAL LAMPS		NOMINAL LENGTH	TOTAL LAMPS
FFF106-1-2M	2'	1	FFF106-1-2R	2'	1
FFF106-1-4M	4'	1	FFF106-1-4R	4'	1
FFF106-1-8MT	8'	2	FFF106-1-8RT	8'	2
FFF106-2-2M	2'	2	FFF106-2-2R	2'	2
FFF106-2-4M	4'	2	FFF106-2-4R	4'	2
FFF106-2-8MT	8'	4	FFF106-2-8RT	8'	4

ORDERING GUIDE



NOTE: LAMP/WIRING*
 M= Miniature Bi-Pin T5
 R = Medium Bi-Pin T8
 MT= Miniature Bi-Pin T5, Tandem Wiring
 RT = Medium Bi-Pin T8, Tandem Wiring

OPTIONS AND ACCESSORIES

OPTICAL OPTIONS

- Clear Acrylic
- Clear Prismatic Acrylic
- Flat White Acrylic
- Polycarbonate Lenses
- High Impact Acrylic
- * Other Lens Available Upon Request

- SUFFIX
- CA
 - PA
 - FWA
 - *
 - *

ELECTRICAL OPTIONS

- Emergency Battery Pack
- External Line Fusing (HLR/GLR)

- SUFFIX
- BP*
 - ELF

BALLAST OPTIONS*

- Electronic T5
- Electronic T5HO
- Electronic T8 Instant Start
- Electronic T8 Rapid Start
- Electronic T8HO
- x = Number of Lamps per Ballast

- SUFFIX
- xE5
 - xE5H
 - xE8I
 - xE8R
 - xE8H

ACCESSORIES

- Hanger Yokes

- CAT. NO.
- HS-6_1/2

*Refer to www.lalighting.com/resources for more information

SPECIFICATIONS

- TYPE
- CONSTRUCTION
- FINISH
- DOOR FRAME
- OPTICS
- WIRING
- LABELS

Recessed mounted square sides. Available in various lengths. Adaptable to a wide variety of ceiling styles.
 20 ga. cold rolled steel welded housing.
 Baked white powder coated finish, minimum reflectance 90%, painted after fabrication.
 Frameless flat trim.
 Clear prismatic acrylic standard.
 120v 60Hz., 277v 60Hz., UNV (universal voltage 120v thru 277v.) or as otherwise specified.
 U.L. Listed. Suitable for damp locations. Compatible with UL Fire-Rated Ceiling Assemblies.

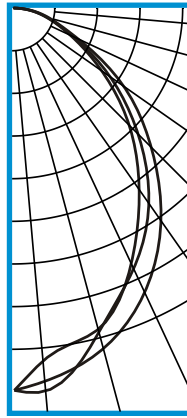
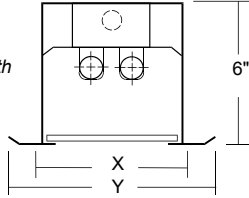


PHOTOMETRIC DATA

FFF106-2-4R-PA-E8

TEST NO.=LA-T0436-1
 LAMP TYPE=FO32T8
 NO. OF LAMP=2
 LUMENS PER LAMP=2900
 WATTS PER LAMP=32
 BALLAST FACTOR=1
 PHOTOMETRY TYPE=C

Ceiling Opening
 X - 6_ 1/2" X 48_ 1/2"
 Overall Width By Length
 Y - 8" X 50_ 1/2"



CANDLEPOWER

ANGLE	END	45	CROSS
0	1341	1341	1341
5	1312	1347	1237
15	1231	1168	1162
25	1091	1000	977
35	898	824	764
45	675	609	565
55	460	401	365
65	235	218	208
75	121	113	109
85	37	32	35
90	3	3	3
95	0	0	0
105	0	0	0
115	0	0	0
125	0	0	0
135	0	0	0
145	0	0	0
155	0	0	0
165	0	0	0
175	0	0	0
180	0	0	0

ZONAL LUMEN SUMMARY

DEGREES	LUMENS	% LAMP	% FIXTURE
0-30	931	16.1	35.0
0-40	1451	25.0	54.5
0-60	2292	39.5	86.1
0-90	2659	45.9	100.0
90-120	1	0.0	0
90-150	1	0.0	0
90-180	1	0.0	0
0-180	2660	45.9	100.0

Lumen Output = 2660 lumens
 Luminaire Efficiency = 45.9%

SPACING CRITERION

ALONG	ACROSS
1.12	1.00

This space is intentionally left blank.

This space is intentionally left blank.

This space is intentionally left blank.

