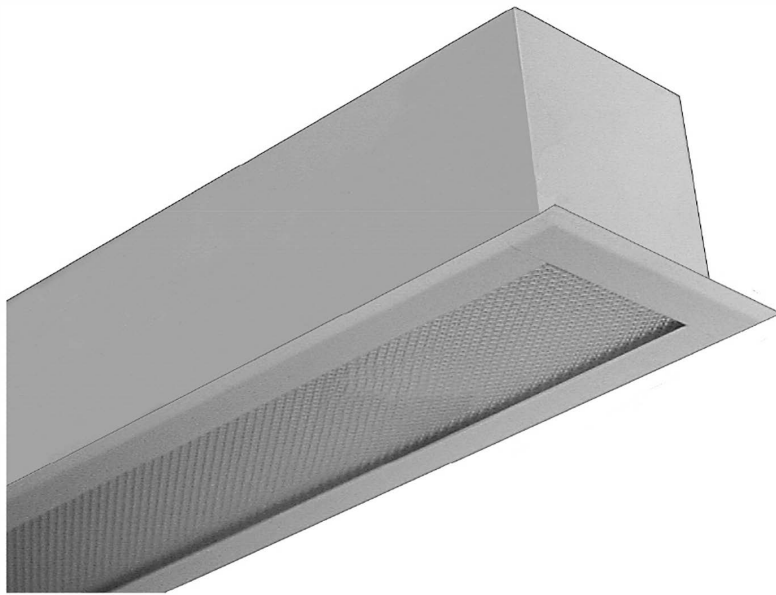


LED T8 - RECESSED

FFF106 SERIES

6" Width / Frameless Trim Flange Luminaire



- 6" Width/Frameless Trim Flange Luminaire For LED T8 Light Tube (by Others)
- 22 Gauge Cold Rolled Steel Housing
- Welded And Painted After Fabrication
- Available with:
 - Heavy Duty Safety Switch
 - Extensive Variety of Lenses



LOS ANGELES LIGHTING MFG. CO.

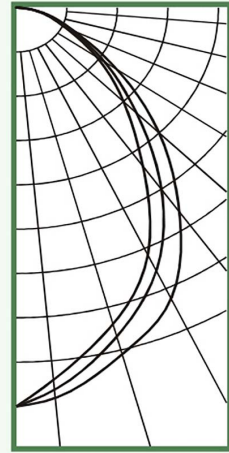
10141 OLNEY ST. / EL MONTE, CA 91731

<http://www.lalighting.com>

TEL : 626-454-8300 FAX : 626-454-8399

FFF106-2-4L-PA-LED8

TEST NO.=LA-T1847-1
 LAMP TYPE=LED T8, 4'
 NO. OF LAMP=2
 LUMENS PER LAMP=1300
 WATTS PER LAMP=15
 BALLAST FACTOR=1
 PHOTOMETRY TYPE=C



CANDLEPOWER

Angle	End	45	Cross
0	863	863	863
5	848	830	809
15	777	737	709
25	695	629	591
35	540	481	419
45	383	323	288
55	233	205	187
65	122	112	103
75	66	61	57
85	19	17	15
90	1	1	1
95	0	0	0
105	0	0	0
115	0	0	0
125	0	0	0
135	0	0	0
145	0	0	0
155	0	0	0
165	0	0	0
175	0	0	0
180	0	0	0

ZONAL LUMEN SUMMARY

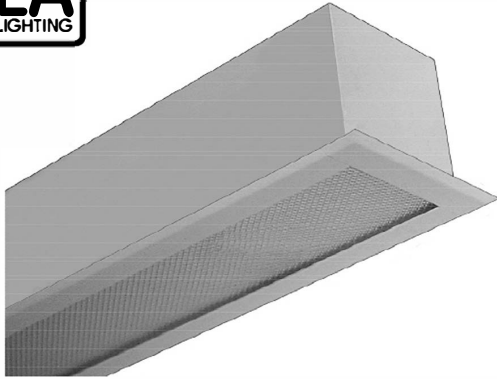
DEGREES	LUMENS	% LAMP	% FIXTURE
0-30	584	2234	38.5
0-40	885	34.0	58.4
0-60	1326	51.0	87.4
0-90	1517	58.3	100.0
90-120	0	0.0	0.0
90-150	0	0.0	0.0
90-180	0	0.0	0.0
0-180	1517	58.3	100.0

Luminaire Efficiency = 58.3%

SPACING CRITERION

ALONG	ACROSS
1.09	0.94

LED T8 - RECESSED

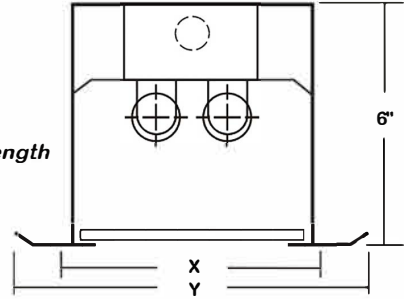


FFF106 SERIES - LED T8

CROSS SECTION

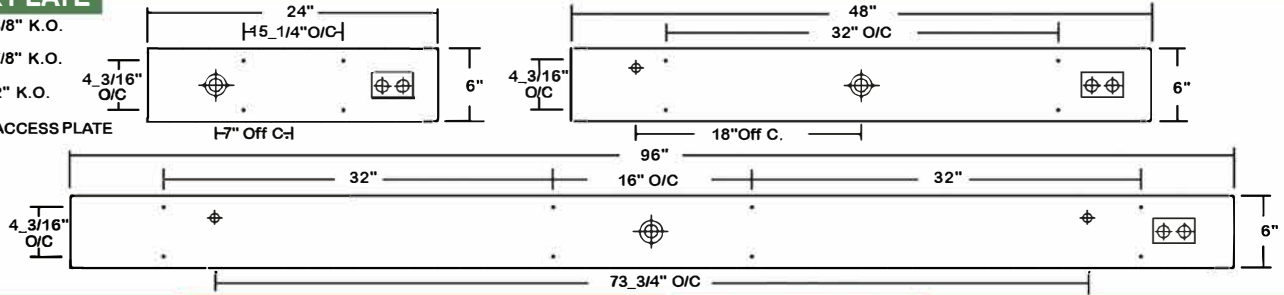
Ceiling Opening
 X - 6 1/2" x 24 1/2"
 6 1/2" x 48 1/2"
 6 1/2" x 96 1/2"

Overall Width By Length
 Y - 8" x 26 1/2"
 8" x 50 1/2"
 8" x 98 1/2"



BACK PLATE

- 3/8" K.O.
- ⊕ 7/8" K.O.
- ⊕ 2" K.O.
- ⊕ ACCESS PLATE



CATALOG NUMBER

NOMINAL LENGTH	TOTAL LAMPS	NOMINAL LENGTH	TOTAL LAMPS		
FFF106-1-2LI	2'	1	FFF106-2-2LI	2'	2
FFF106-1-2LR	2'	1	FFF106-2-2LR	2'	2
FFF106-1-4LI	4'	1	FFF106-2-4LI	4'	2
FFF106-1-4LR	4'	1	FFF106-2-4LR	4'	2
FFF106-1-8LIT	8'	2	FFF106-2-8LIT	8'	4
FFF106-1-8LRT	8'	2	FFF106-2-8LRT	8'	4

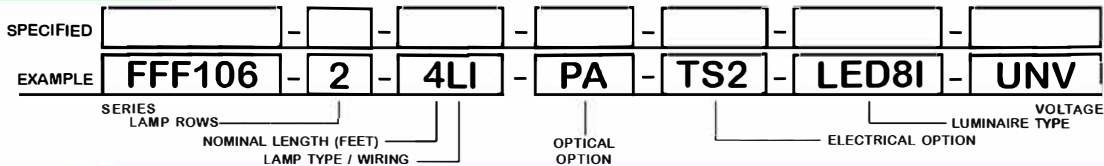
SAFETY SWITCH



TS2 - LED Luminaire On/Off Safety Switch

- Easily accessible on exterior of wire way.
- Allows individual fixture to be switched ON/OFF during re-lamping or Maintenance.
- Prevents damage to lamp and electrical shock during lamping and re-lamping.
- Allows safe entry to wire way channel where power connector can be disconnected for maintenance to fixture.

ORDERING GUIDE



LAMP TYPE

LI = LED T8 internal driver light tube.
 Both ends powered.
 Shunted sockets used.



LR = LED T8 internal driver light tube.
 Single end powered.
 Non-shunted sockets used.



OPTIONS AND ACCESSORIES

- **OPTICAL OPTIONS**
 Parabolic Plastic Louvers
 Polycarbonate Lenses
 High Impact Acrylic
 Flat White Matte Diffusers
 Clear Prismatic Acrylic

- SUFFIX**
- * * *
 - FWA
 - PA

- **ELECTRICAL OPTIONS**
 LED Luminaire ON/OFF Safety Switch

- SUFFIX**
- TS2

- **ACCESSORIES**
 Hanger Yokes

CAT. NO.
 HS-6½

*See Appropriate Reference Page

SPECIFICATIONS

- **TYPE**
- **CONSTRUCTION**
- **FINISH**
- **DOOR FRAME**
- **OPTICS**
- **WIRING**
- **LABELS**

Recessed mounted square sides luminaire for LED T8 light tube (s)** with internal driver. Available in various lengths. Adaptable to a wide variety of ceiling styles.
 22 ga. cold rolled steel housing. (20 ga. housing available as specified)
 Baked white polyester finish, minimum reflectance 86%. (Powder coated finish available.)
 Frameless flat trim.
 Clear prismatic acrylic standard.
 Operates T8 LED light tube(s)**.
 U.L. Listed. Suitable for damp locations.

** Lamp(s) by others.

