



# SPECIAL PURPOSE

## GCR600 SERIES



## Class 1000/10000 Clean Room



- Class 1000/10000 Clean Room Luminaire
- ISO Class 6 / ISO Class 7 Equivalent
- For 2" T-Bar Ceiling
- All Parts Are Fitted And Sealed
- Welded And Painted After Fabrication
- T-Hinge & Spring Loaded Latch
- Inverted Nominal .125 Clear Prismatic Acrylic Lens
- Available with:
  - Fluorescent, LED and LED T8 (Internally Driven)
  - Variety of Lenses & Door Frame
  - Emergency Battery Pack



Photometric Data and IES Files are Available on [www.lalighting.com](http://www.lalighting.com)

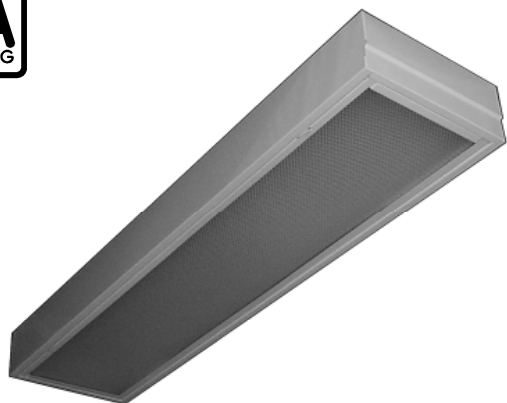


### LOS ANGELES LIGHTING MFG. CO.

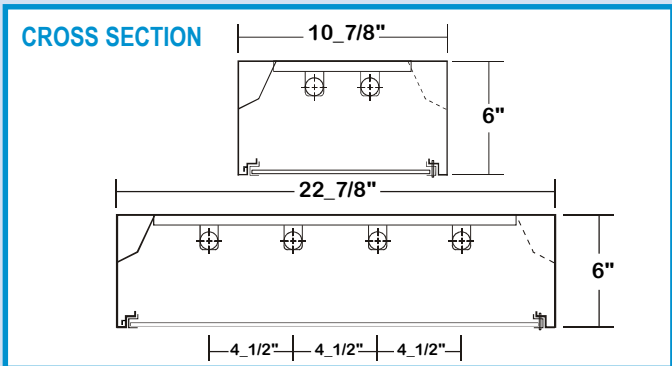
10141 OLNEY ST. / EL MONTE, CA 91731

TEL : 626-454-8300 FAX : 626-454-8399

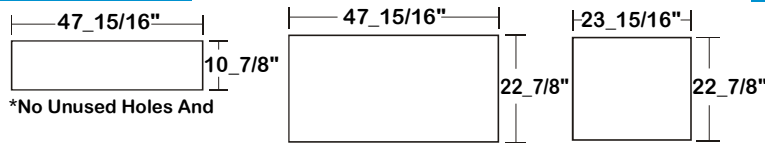
[www.lalighting.com](http://www.lalighting.com)



# GCR600 SERIES

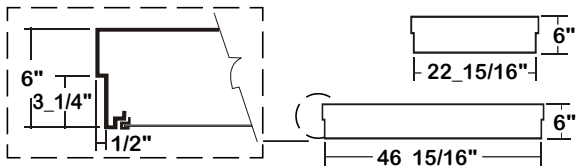


## BACK PLATE



\*No Unused Holes And

## SIDE VIEW



## DOOR FRAME INFORMATION

### ● CROSS SECTION



**FS W**

### FINISHES

W - White Enamel  
B - Black Enamel

### STYLES

FS - Flat Steel

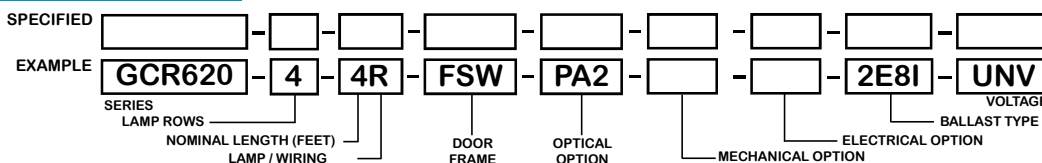
### ● EXPLANATION

1. Inverted Lens.
2. T-Hinge, Positive Spring Loaded Latch.
3. Two-Way Gasketing, Sealed With Closed Cell Neoprene Gasket.
4. Seams Sealed With Silicone.

## CATALOG NUMBER

	NOMINAL WIDTH X LENGTH	TOTAL LAMPS		NOMINAL WIDTH X LENGTH	TOTAL LAMPS		NOMINAL WIDTH X LENGTH	TOTAL LAMPS
GCR610-2-4M	1' X 4'	2	GCR610-2-4R	1' X 4'	2	GCR620-4-2R	2' X 2'	4
GCR620-2-2M	2' X 2'	2	GCR620-2-2R	2' X 2'	2	GCR620-2-4R	2' X 4'	2
GCR620-2-4M	2' X 4'	2	GCR620-2-2RU6	2' X 2'	2	GCR620-3-4R	2' X 4'	3
GCR620-3-4M	2' X 4'	3	GCR620-3-2R	2' X 2'	3	GCR620-4-4R	2' X 4'	4
GCR620-4-4M	2' X 4'	4						

## ORDERING GUIDE



**NOTE: LAMP/WIRING\***  
 M=Miniature Bi-Pin T5  
 R=Medium Bi-Pin T8  
 RU6= Medium Bi-Pin T8  
 U Shaped 6" Spacing

## OPTIONS AND ACCESSORIES

### ● OPTICAL OPTIONS

- Polycarbonate Lenses
- High Impact Acrylic
- Clear Prismatic Acrylic Nom .125
- Flat White Matte Diffusers

SUFFIX  
\*  
\*  
PA2  
FWA

### ● ELECTRICAL OPTIONS

- Emergency Battery Pack
- External Line Fusing (HLR/GLR)

SUFFIX  
BP\*  
ELF

### ● BALLAST OPTIONS\*

- Electronic T5
  - Electronic T5HO
  - Electronic T8 Instant Start
  - Electronic T8 Rapid Start
  - Electronic T8HO
- x = Number of Lamps per Ballast

SUFFIX  
x E5  
x E5H  
x E8I  
x E8R  
x E8H

\*Refer to [www.lalighting.com/resources](http://www.lalighting.com/resources) for more information

## SPECIFICATIONS

### ● TYPE

Class 1000/10000 square sided clean room fixture, ISO Class 6/ISO Class 7 equivalent. Applicable where a sealed ceiling situation exists. Compatible with inverted Tee-Bar Ceilings 2" width.

### ● CONSTRUCTION

22ga. cold rolled steel welded housing. All parts are fitted and sealed, no unused holes or KO's.

### ● FINISH

Baked white powder coated finish, minimum reflectance 90%, painted after fabrication.

### ● DOOR FRAME

20 gauge cold rolled steel. T - Hinge, positive spring loaded latch. Door frame and lens sealed with closed cell neoprene gasket.

### ● OPTICS

Inverted clear prismatic acrylic lens standard, nominal .125 overall thickness.

### ● WIRING

120v 60Hz., 277v 60Hz., UNV (universal voltage 120v thru 277v.) or as otherwise specified.

### ● LABELS

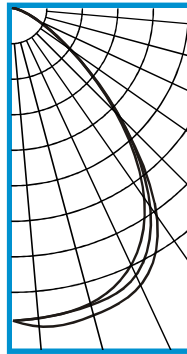
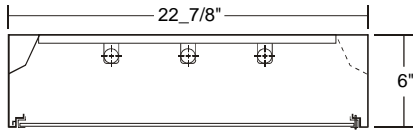
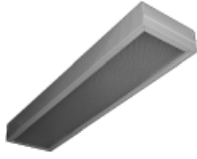
U.L. Listed. Suitable for damp locations. Compatible with UL Fire-Rated Ceiling Assemblies.



**PHOTOMETRIC DATA**

**GCR620-3-4R-FSW-PA-E8**

TEST NO.=LA-T0361  
 LAMP TYPE=FO32T8  
 NO. OF LAMP=3  
 LUMENS PER LAMP=2900  
 WATTS PER LAMP=32  
 BALLAST FACTOR=1  
 PHOTOMETRY TYPE=C



**CANDLEPOWER**

ANGLE	END	45	CROSS
0	2779	2779	2779
5	2765	2765	2842
15	2709	2728	2820
25	2504	2607	2705
35	2029	2120	2222
45	1273	1314	1301
55	578	586	597
65	220	209	216
75	56	63	58
85	6	8	7
90	0	1	0
95	0	0	0
105	0	0	0
115	0	0	0
125	0	0	0
135	0	0	0
145	0	0	0
155	0	0	0
165	0	0	0
175	0	0	0
180	0	0	0

**ZONAL LUMEN SUMMARY**

DEGREES	LUMENS	% LAMP	% FIXTURE
0-30	2250	25.9	41.7
0-40	3584	41.2	66.4
0-60	5117	58.8	94.8
0-90	5398	62.0	100.0
90-120	0	0.0	0
90-150	0	0.0	0
90-180	0	0.0	0
0-180	5398	62.0	100.0

Lumen Output = 5398 lumens  
 Luminaire Efficiency = 62.0%

**SPACING CRITERION**

ALONG	ACROSS
1.20	1.27

This space is intentionally left blank.

This space is intentionally left blank.

This space is intentionally left blank.

