

# LED T8 - SPECIAL PURPOSE

## GCR600 SERIES

### Class 1000/ 10000 Clean Room Luminaire



- Class 1000/10000 Clean Room Luminaire For LED T8 Internal Driver Light Tube (by Others)
- For 2" T-Bar Ceiling
- T-Hinge & Spring Loaded Latch
- Inverted Nominal .125 Clear Prismatic Acrylic Lens Standard
- All Parts Are Fitted and Sealed
- Welded And Painted After Fabrication

- Available with:  
Heavy Duty Safety Switch



**LOS ANGELES LIGHTING MFG. CO.**

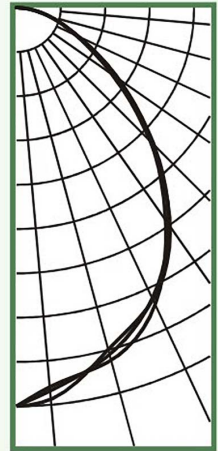
10141 OLNEY ST. / EL MONTE, CA 91731

<http://www.lalighting.com>

**TEL : 626-454-8300 FAX : 626-454-8399**

#### GCR620-3-4L-PA-LED8

TEST NO.=LA-T1825  
LAMP TYPE=LED T8, 4'  
NO. OF LAMP=3  
LUMENS PER LAMP=1300  
WATTS PER LAMP=15  
BALLAST FACTOR=1  
PHOTOMETRY TYPE=C



#### CANDLEPOWER

Angle	End	45	Cross
0	1290	1290	1290
5	1232	1245	1272
15	1181	1162	1145
25	1060	1038	1043
35	839	857	864
45	615	628	610
55	404	396	378
65	222	221	212
75	115	113	110
85	29	32	30
90	2	2	2
95	0	0	0
105	0	0	0
115	0	0	0
125	0	0	0
135	0	0	0
145	0	0	0
155	0	0	0
165	0	0	0
175	0	0	0
180	0	0	0

#### ZONAL LUMEN SUMMARY

DEGREES	LUMENS	% LAMP	% FIXTURE
0-30	932	23.9	35.0
0-40	1469	37.7	55.1
0-60	2302	59.0	86.4
0-90	2665	68.3	100.0
90-120	1	0.0	0.0
90-150	1	0.0	0.0
90-180	1	0.0	0.0
0-180	2665	68.3	100.0

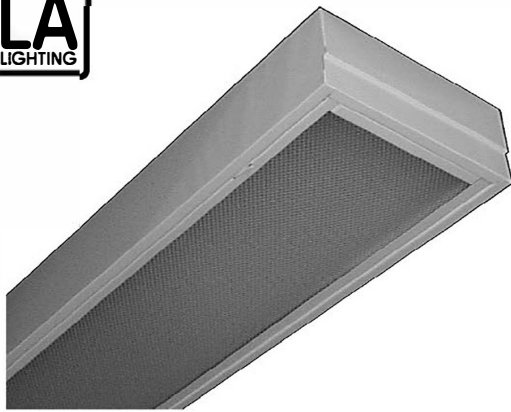
Luminaire Efficiency = 68.3%

#### SPACING CRITERION

ALONG	ACROSS
1.11	1.11

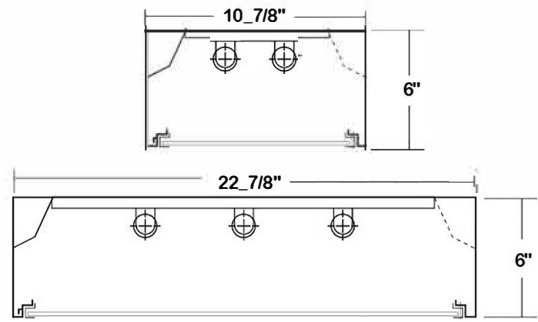
## LED T8 - SPECIAL PURPOSE

## CLASS 1000 / 10000 CLEAN ROOM



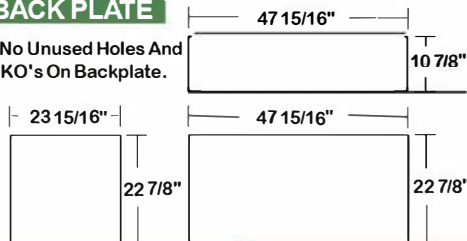
## GCR600 SERIES - LED T8

## CROSS SECTION

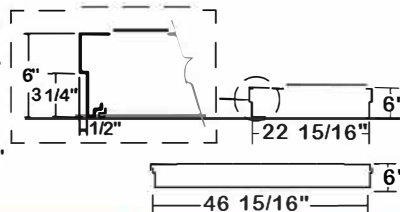


## BACK PLATE

\*No Unused Holes And KO's On Backplate.



## SIDE VIEW



## SAFETY SWITCH

- TS2** - LED Luminaire On/Off Safety Switch
- Easily accessible on exterior of wire way.
  - Allows individual fixture to be switched ON/OFF during re-lamping or Maintenance.
  - Prevents damage to lamp and electrical shock during lamping and re-lamping.
  - Allows safe entry to wire way channel where power connector can be disconnected for maintenance to fixture.



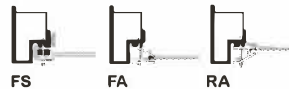
## CATALOG NUMBER

	NOMINAL LENGTH	TOTAL LAMPS
GCR610-2-4LI	1'X4'	2
GCR610-2-4LR	1'X4'	2
GCR620-2-2LI	2'X2'	2
GCR620-2-2LR	2'X2'	2
GCR620-3-2LI	2'X2'	3
GCR620-3-2LR	2'X2'	3

	NOMINAL LENGTH	TOTAL LAMPS
GCR620-4-2LI	2'X2'	4
GCR620-4-2LR	2'X2'	4
GCR620-2-4LI	2'X4'	2
GCR620-2-4LR	2'X4'	2
GCR620-3-4LI	2'X4'	3
GCR620-3-4LR	2'X4'	3
GCR620-4-4LI	2'X4'	4
GCR620-4-4LR	2'X4'	4

## DOOR FRAME INFORMATION

## • CROSS SECTION



## • EXPLANATION

1. Inverted Lens.
2. T-Hinge, Positive Spring Loaded Latch.
3. Two-Way Gasketing, Sealed With Closed Cell Neoprene Gasket.
4. Seams Sealed With Silicone.

## FS W

## FINISHES

W - White Enamel  
B - Black Enamel

## STYLES

FS - Flat Steel

## ORDERING GUIDE

SPECIFIED		-		-		-		-		-		-		-	
EXAMPLE	GCR620	-	3	-	4LI	-	FSW	-	PA2	-	TS2	-	LED8I	-	UNV
	SERIES		LAMP ROWS		NOMINAL LENGTH (FEET)		DOOR FRAME		OPTICAL OPTION		ELECTRICAL OPTION		LUMINAIRE TYPE		VOLTAGE
					LAMP TYPE / WIRING										

## LAMP TYPE

**LI = LED T8 internal driver light tube.**  
Both ends powered.  
Shunted sockets used.



**LR = LED T8 internal driver light tube.**  
Single end powered.  
Non-shunted sockets used.



## OPTIONS AND ACCESSORIES

## • OPTICAL OPTIONS

Polycarbonate Lenses  
High Impact Acrylic  
Clear Prismatic Acrylic Nom .125  
Flat White Matte Diffusers

## SUFFIX

\*  
\*  
PA2  
FWA

## • ELECTRICAL OPTIONS

LED Luminaire ON/OFF Safety Switch

## SUFFIX

TS2

\*See Appropriate Reference Page

## SPECIFICATIONS

\*\*Lamp(s) by others.

## • TYPE

Tee-Bar mounted square sided class 1000/10000 clean room fixture for LED T8 internal driver light tube (s)\*\*. Applicable where a sealed ceiling situation exists. Compatible with inverted Tee-Bar Ceilings 2" width.

## • CONSTRUCTION

20 ga. cold rolled steel welded housing. All parts are fitted and sealed, no unused holes or KO's.

## • FINISH

Baked white powdercoated finish, minimum reflectance 90%, painted after fabrication.

## • DOOR FRAME

20 gauge cold rolled steel. T - Hinge, positive spring loaded latch. Door frame and lens sealed with closed cell neoprene gasket.

## • OPTICS

Inverted clear prismatic acrylic lens standard, nominal .125 overall thickness.

## • WIRING

Operates LED T8 internal driver light tube(s)\*\*.

## • LABELS

U.L. Listed. Suitable for damp locations.

