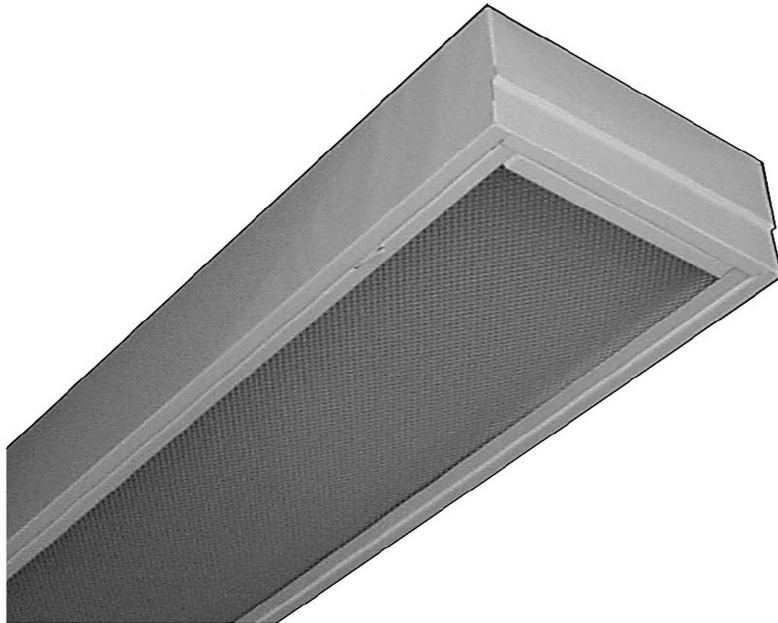


LED T8 - SPECIAL PURPOSE

GCR700 SERIES

Class 1000/ 10000 Clean Room Luminaire



- Class 1000/10000 Clean Room Luminaire For LED T8 Internal Driver Light Tube (by Others)
- For 1" or 1½" T-Bar Ceiling
- T-Hinge & Spring Loaded Latch
- Inverted Nominal .125 Clear Prismatic Acrylic Lens Standard
- All Parts Are Fitted and Sealed
- Welded And Painted After Fabrication

- Available with:
Heavy Duty Safety Switch



LOS ANGELES LIGHTING MFG. CO.

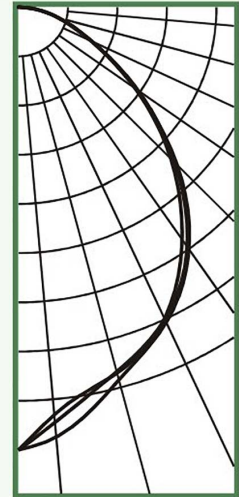
10141 OLNEY ST. / EL MONTE, CA 91731

<http://www.lalighting.com>

TEL : 626-454-8300 FAX : 626-454-8399

GCR720-3-4L-PA-LED8

TEST NO.=LA-T1824
LAMP TYPE=LED T8, 4'
NO. OF LAMP=3
LUMENS PER LAMP=1300
WATTS PER LAMP=15
BALLAST FACTOR=1
PHOTOMETRY TYPE=C



CANDLEPOWER

Angle	End	45	Cross
0	1342	1342	1342
5	1240	1263	1308
15	1148	1143	1169
25	1041	1044	1054
35	860	886	895
45	649	665	676
55	430	441	432
65	242	241	242
75	126	122	127
85	36	36	38
90	3	3	3
95	0	0	0
105	0	0	0
115	0	0	0
125	0	0	0
135	0	0	0
145	0	0	0
155	0	0	0
165	0	0	0
175	0	0	0
180	0	0	0

ZONAL LUMEN SUMMARY

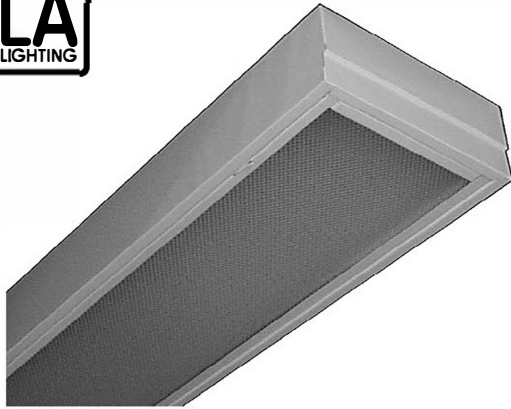
DEGREES	LUMENS	% LAMP	% FIXTURE
0-30	932	23.9	33.4
0-40	1485	38.1	53.2
0-60	2391	61.3	85.6
0-90	2792	71.6	100.0
90-120	1	0.0	0.0
90-150	1	0.0	0.0
90-180	1	0.0	0.0
0-180	2793	71.6	100.0

Luminaire Efficiency = 71.6%

SPACING CRITERION

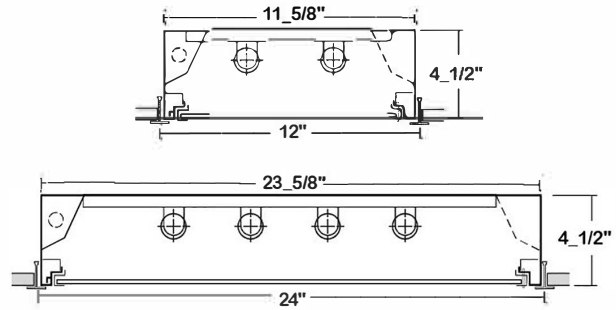
ALONG	ACROSS
1.07	1.09





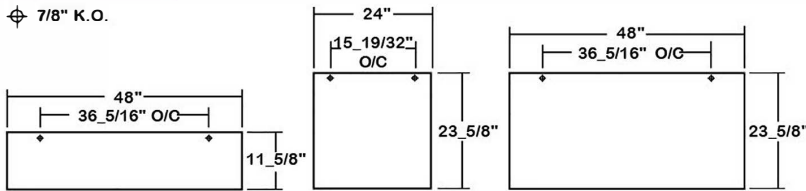
GCR700 SERIES - LED T8

CROSS SECTION



BACK PLATE

7/8" K.O.



SAFETY SWITCH



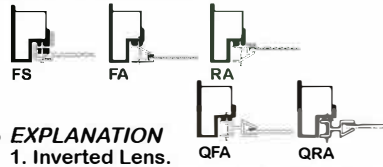
- TS2 - LED Luminaire On/Off Safety Switch**
- Easily accessible on exterior of wire way.
 - Allows individual fixture to be switched ON/OFF during re-lamping or Maintenance.
 - Prevents damage to lamp and electrical shock during lamping and re-lamping.
 - Allows safe entry to wire way channel where power connector can be disconnected for maintenance to fixture.

CATALOG NUMBER

	NOMINAL LENGTH	TOTAL LAMPS	NOMINAL LENGTH	TOTAL LAMPS
GCR710-2-4LI	1'X4'	2	GCR720-4-2LI	2'X2'
GCR710-2-4LR	1'X4'	2	GCR720-4-2LR	2'X2'
GCR720-2-2LI	2'X2'	2	GCR720-2-4LI	2'X4'
GCR720-2-2LR	2'X2'	2	GCR720-2-4LR	2'X4'
GCR720-3-2LI	2'X2'	3	GCR720-3-4LI	2'X4'
GCR720-3-2LR	2'X2'	3	GCR720-3-4LR	2'X4'
			GCR720-4-4LI	2'X4'
			GCR720-4-4LR	2'X4'

DOOR FRAME INFORMATION

CROSS SECTION



EXPLANATION

1. Inverted Lens.
2. T-Hinge, Positive Spring Loaded Latch.
3. Sealed With Neoprene Gasket.
4. Light Stop Covers Installed.
5. Silicone Sealed Corners.
6. Internal Frame Rail.

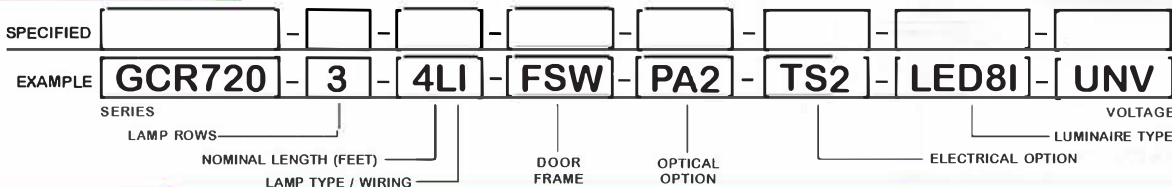
FS W

FINISHES

- W - White Enamel
- B - Black Enamel

FS - Flat Steel

ORDERING GUIDE



LAMP TYPE

LI = LED T8 internal driver light tube.
Both ends powered.
Shunted sockets used.



LR = LED T8 internal driver light tube.
Single end powered.
Non-shunted sockets used.



OPTIONS AND ACCESSORIES

OPTICAL OPTIONS

- Polycarbonate Lenses *
- High Impact Acrylic *
- Clear Prismatic Acrylic Nom .125 PA2
- Flat White Matte Diffusers FWA

ELECTRICAL OPTIONS

- LED Luminaire ON/OFF Safety Switch TS2

*See Appropriate Reference Page

SPECIFICATIONS

** Lamp(s) by others.

TYPE

Square sided clean room fixture for LED T8 internal driver light tube (s)**. Applicable where a sealed ceiling situation exists. Compatible with inverted Tee-Bar Ceilings 1" or 1 1/2" width.

- CONSTRUCTION
- FINISH
- DOOR FRAME
- OPTICS
- WIRING
- LABELS

20 ga. cold rolled steel welded housing. All parts are fitted and sealed, no unused holes or KO's. Baked white powdercoated finish, minimum reflectance 90%, painted after fabrication. 20 gauge cold rolled steel. T-hinge and positive spring loaded latch. Door frame sealed with neoprene gasket. Inverted clear prismatic acrylic lens standard, nominal .125 overall thickness. Operates LED T8 internal driver light tube(s)**. U.L. Listed. Suitable for damp locations.

