



RECESSED

GHL310 SERIES



5" Depth / Premium Grade T-Bar



- 5" Depth / Premium Grade T-Bar Luminaire
- 22 Gauge Cold Rolled Steel Housing
- 20 Gauge Steel or Extruded Aluminum Door Frame Screwed at Each Corner
- Door Frame Painted After Fabrication
- One Way Polyurethane Gasketed
- T-Hinge And Spring Loaded Latch
- Screwed-On End Caps
- Suitable for Damp Locations
- Available with:
 - Fluorescent, LED and LED T8 (Internally Driven)
 - Variety of Lens Options
 - Emergency Battery Pack



Photometric Data and IES Files are Available on www.lalighting.com



LOS ANGELES LIGHTING MFG. CO.

10141 OLNEY ST. / EL MONTE, CA 91731

TEL : 626-454-8300 FAX : 626-454-8399

www.lalighting.com

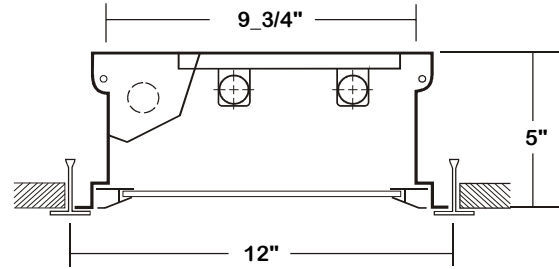
RECESSED - Fluorescent

LED Equivalent Products Available on www.lalighting.com



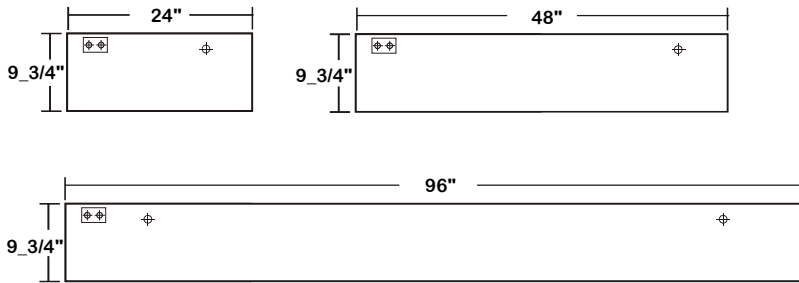
GHL310 SERIES

CROSS SECTION



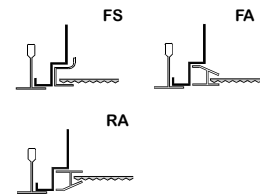
BACK PLATE

ACCESS PLATE 7/8" K.O.



DOOR FRAME INFORMATION

CROSS SECTION



FINISHES

FINISHES

- W - White Enamel
- B - Black Enamel
- N - Natural Anodized Aluminum

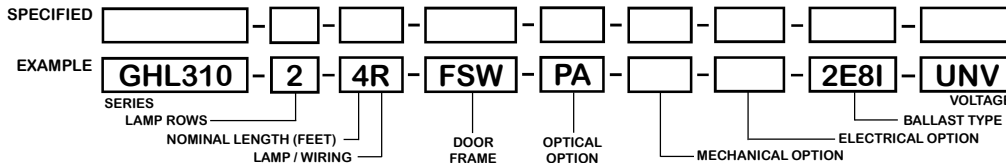
STYLES

- FS - Flat Steel
- FA - Flat Extruded Aluminum
- RA - 5/8" Regressed Extruded Aluminum

CATALOG NUMBER

	NOMINAL LENGTH	TOTAL LAMPS		NOMINAL LENGTH	TOTAL LAMPS		NOMINAL LENGTH	TOTAL LAMPS		NOMINAL LENGTH	TOTAL LAMPS
GHL310-1-2M	2'	1	GHL310-3-2M	2'	3	GHL310-1-2R	2'	1	GHL310-3-2R	2'	3
GHL310-1-4M	4'	1	GHL310-3-4M	4'	3	GHL310-1-4R	4'	1	GHL310-3-4R	4'	3
GHL310-1-8MT	8'	2	GHL310-3-8MT	8'	6	GHL310-1-8RT	8'	2	GHL310-3-8RT	8'	6
GHL310-2-2M	2'	2				GHL310-2-2R	2'	2			
GHL310-2-4M	4'	2				GHL310-2-4R	4'	2			
GHL310-2-8MT	8'	4				GHL310-2-8RT	8'	4			

ORDERING GUIDE



NOTE: LAMP/WIRING*

- M= Miniature Bi-Pin T5
- R = Medium Bi-Pin T8
- MT= Miniature Bi-Pin T5, Tandem Wiring
- RT = Medium Bi-Pin T8, Tandem Wiring

OPTIONS AND ACCESSORIES

OPTICAL OPTIONS

- Clear Acrylic
- Clear Prismatic Acrylic
- Flat Frosted White Acrylic
- Polycarbonate Lenses
- High Impact Acrylic
- Note: Other lens available upon request

SUFFIX

- CA
- PA
- FFWA
- *
- *

MECHANICAL OPTIONS

- Gasketing

SUFFIX

- GSK*

ELECTRICAL OPTIONS

- Emergency Battery Pack
- External Line Fusing (HLR/GLR)

SUFFIX

- BP*
- ELF

BALLAST OPTIONS*

- Electronic T5
- Electronic T5HO
- Electronic T8 Instant Start
- Electronic T8 Rapid Start
- Electronic T8HO

SUFFIX

- xE5
- xE5H
- xE8I
- xE8R
- xE8H

x = Number of Lamps per Ballast

*Refer to www.lalighting.com/resources for more information

SPECIFICATIONS

- **TYPE**
- **CONSTRUCTION**
- **FINISH**
- **DOOR FRAME**
- **GASKET**
- **OPTICS**
- **WIRING**
- **LABELS**

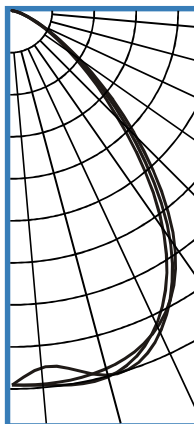
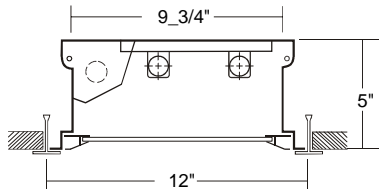
A versatile recessed luminaire. For inverted Tee-Bar installations.
 22 ga. cold rolled steel housing. (20 ga. housing available as specified)
 Baked white polyester finish, minimum reflectance 86%. (Powder coated finish available.)
 20 gauge cold rolled steel or extruded aluminum in various finishes. T-hinge, positive spring loaded latch.
 One way polyurethane gasketed standard. More options available.
 Clear prismatic acrylic standard. Extensive variety of lenses, diffusers and louvers available.
 120v 60Hz., 277v 60Hz., UNV (universal voltage 120v thru 277v.) or as otherwise specified.
 U.L. Listed. Suitable for damp locations. Compatible with UL Fire-Rated Ceiling Assemblies.



PHOTOMETRIC DATA

GHL310-2-4R-PA-E8

TEST NO.=LA-T0357
 LAMP TYPE=FO32T8
 NO. OF LAMP=2
 LUMENS PER LAMP=2900
 WATTS PER LAMP=32
 BALLAST FACTOR=1
 PHOTOMETRY TYPE=C



CANDLEPOWER

ANGLE	END	45	CROSS
0	1687	1687	1687
5	1689	1613	1695
15	1668	1701	1705
25	1566	1591	1551
35	1279	1239	1184
45	779	726	664
55	360	332	306
65	124	124	113
75	34	35	34
85	5	5	5
90	0	0	0
95	0	0	0
105	0	0	0
115	0	0	0
125	0	0	0
135	0	0	0
145	0	0	0
155	0	0	0
165	0	0	0
175	0	0	0
180	0	0	0

ZONAL LUMEN SUMMARY

DEGREES	LUMENS	% LAMP	% FIXTURE
0-30	1367	23.6	43.2
0-40	2143	36.9	67.8
0-60	3001	51.7	94.9
0-90	3162	54.5	100.0
90-120	0	0.0	0
90-150	0	0.0	0
90-180	0	0.0	0
0-180	3162	54.5	100.0

Lumen Output = 3162 lumens
 Luminaire Efficiency = 54.5%

SPACING CRITERION

ALONG	ACROSS
1.24	1.19

This space is intentionally left blank.

This space is intentionally left blank.

This space is intentionally left blank.

