



# RECESSED

## GIC220 SERIES



### Direct / Indirect T-Bar Luminaire



- Center Basket Direct / Indirect Recessed Mounted T-Bar Luminaire
- Center Perforated Light Shields with Polyethylene Trims
- Easy Access to Electrical Components
- Removable Wiring Access Plate
- High Reflectance, Low Gloss Matte White Finish
- Suitable for Damp Locations
- Available with:
  - Fluorescent, LED and LED T8 (Internally Driven)
  - Curve Contour Acrylic Lens



*Photometric Data and IES Files are Available on [www.lalighting.com](http://www.lalighting.com)*



**LOS ANGELES LIGHTING MFG. CO.**

10141 OLNEY ST. / EL MONTE, CA 91731

TEL : 626-454-8300 FAX : 626-454-8399

[www.lalighting.com](http://www.lalighting.com)

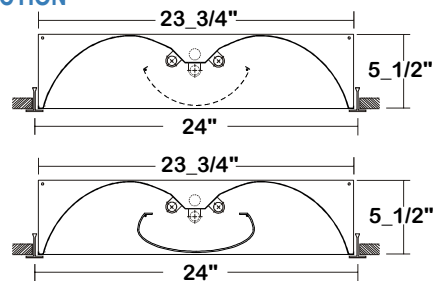
**RECESSED - Fluorescent**

LED Equivalent Products Available on [www.lalighting.com](http://www.lalighting.com)



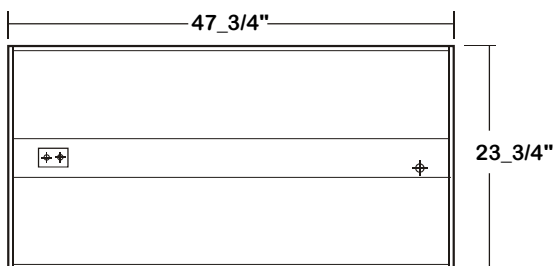
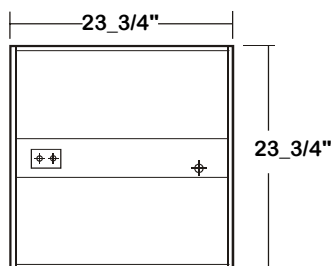
**GIC220 SERIES  
Center Basket 2x2 & 2x4**

**CROSS SECTION**



**BACK PLATE**

- ⊕ ACCESS PLATE
- ⊕ 7/8" K.O.

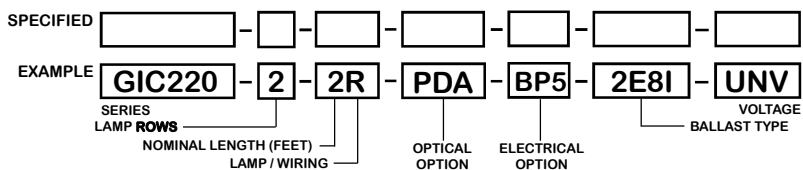


**CATALOG NUMBER**

	NOMINAL WIDTH X LENGTH	TOTAL LAMPS		NOMINAL WIDTH X LENGTH	TOTAL LAMPS
GIC220-1-2M	2' X 2'	1	GIC220-1-4M	2' X 4'	1
GIC220-2-2M	2' X 2'	2	GIC220-2-4M	2' X 4'	2
GIC220-3-2M*	2' X 2'	3	GIC220-3-4M	2' X 4'	3
GIC220-1-2R	2' X 2'	1	GIC220-1-4R	2' X 4'	1
GIC220-2-2R	2' X 2'	2	GIC220-2-4R	2' X 4'	2
GIC220-3-2R	2' X 2'	3	GIC220-3-4R	2' X 4'	3

NOTE: \* 14W T5 LAMPS ONLY.

**ORDERING GUIDE**



**NOTE: LAMP/WIRING\***  
M= Miniature Bi-Pin T5  
R = Medium Bi-Pin T8

**OPTIONS AND ACCESSORIES**

- |                                                                                                                                                                            |                                   |                                                                                                                                                                                                                                     |                                                                                                                                                                                                                                                                                                                                                                         |
|----------------------------------------------------------------------------------------------------------------------------------------------------------------------------|-----------------------------------|-------------------------------------------------------------------------------------------------------------------------------------------------------------------------------------------------------------------------------------|-------------------------------------------------------------------------------------------------------------------------------------------------------------------------------------------------------------------------------------------------------------------------------------------------------------------------------------------------------------------------|
| <ul style="list-style-type: none"> <li>● <b>OPTICAL OPTIONS</b></li> <li>Perforated Shield / White Acrylic</li> <li>Curve Contour Acrylic Lens / Linear Pattern</li> </ul> | <p>SUFFIX</p> <p>PDA<br/>C/LP</p> | <ul style="list-style-type: none"> <li>● <b>ELECTRICAL OPTIONS</b></li> <li>External Line Fusing (HLR/GLR)</li> </ul> <p>SUFFIX</p> <p>ELF</p> <p>NOTE: Please refer to GIC120 series for fixtures with emergency battery pack.</p> | <ul style="list-style-type: none"> <li>● <b>BALLAST OPTIONS*</b></li> <li>Electronic T5</li> <li>Electronic T5HO</li> <li>Electronic T8 Instant Start</li> <li>Electronic T8 Rapid Start</li> <li>Electronic T8HO</li> <li>Electronic Dimming T8</li> <li>Rapid Start (0-10V)</li> </ul> <p>SUFFIX</p> <p>xE5<br/>xE5H<br/>xE8I<br/>xE8R<br/>xE8H<br/>xEDM8R(0-10V)</p> |
|----------------------------------------------------------------------------------------------------------------------------------------------------------------------------|-----------------------------------|-------------------------------------------------------------------------------------------------------------------------------------------------------------------------------------------------------------------------------------|-------------------------------------------------------------------------------------------------------------------------------------------------------------------------------------------------------------------------------------------------------------------------------------------------------------------------------------------------------------------------|

\*Refer to [www.lalighting.com/resources](http://www.lalighting.com/resources) for more information

x = Number of Lamps per Ballast

**SPECIFICATIONS**

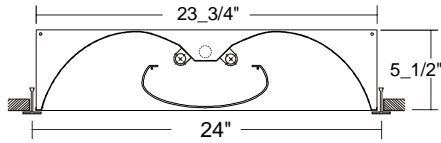
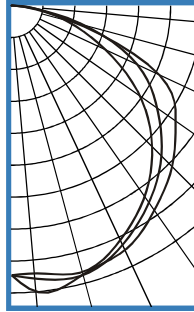
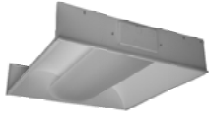
- **TYPE** Direct / indirect recessed mounted luminaries for inverted T-bar ceilings.
- **CONSTRUCTION** 22 ga. cold rolled steel housing/reflector.
- **FINISH** High reflectance, low gloss matte white powder coat finish
- **OPTIC** Perforated center-mount metal light shield with polyethylene protecting trims, snap out for easy re-lamping and maintenance. Curve contour acrylic lens available.
- **WIRING** 120v 60Hz., 277v 60Hz., UNV (universal voltage 120v thru 277v.) or as otherwise specified.
- **LABELS** U.L. Listed. Suitable for damp locations. Compatible with UL Fire-Rated Ceiling Assemblies.



**PHOTOMETRIC DATA**

**GIC220-2-4R-CL/P-E8**

TEST NO.=LA-T1775-1  
 LAMP TYPE=FO32T8  
 NO. OF LAMP=2  
 LUMENS PER LAMP=2900  
 WATTS PER LAMP=32  
 BALLAST FACTOR=1  
 PHOTOMETRY TYPE=C



**CANDLEPOWER**

ANGLE	END	45	CROSS
0	1423	1423	1423
5	1419	1447	1517
15	1455	1472	1467
25	1362	1390	1421
35	1226	1265	1315
45	1047	1118	1198
55	924	936	1056
65	541	728	854
75	288	392	338
85	82	65	53
90	3	3	2
95	0	0	0
105	0	0	0
115	0	0	0
125	0	0	0
135	0	0	0
145	0	0	0
155	0	0	0
165	0	0	0
175	0	0	0
180	0	0	0

**ZONAL LUMEN SUMMARY**

DEGREES	LUMENS	% LAMP	% FIXTURE
0-30	1198	20.7	24.8
0-40	1995	34.4	41.2
0-60	3404	63.9	76.5
0-90	4839	83.4	100.0
90-120	1	0.0	0
90-150	1	0.0	0
90-180	1	0.0	0
0-180	4840	83.4	100.0

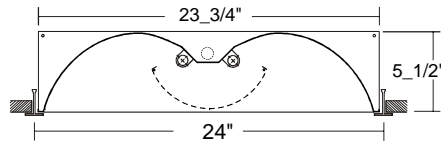
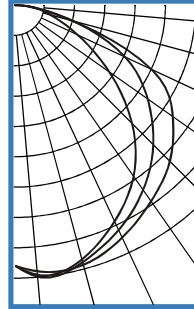
Lumen Output = 4840 lumens  
 Luminaire Efficiency = 83.4%

**SPACING CRITERION**

ALONG	ACROSS
1.34	1.41

**GIC220-2-4R-PD-E8**

TEST NO.=LA-T1548-1  
 LAMP TYPE=FO32T8  
 NO. OF LAMP=2  
 LUMENS PER LAMP=2900  
 WATTS PER LAMP=32  
 BALLAST FACTOR=1  
 PHOTOMETRY TYPE=C



**CANDLEPOWER**

ANGLE	END	45	CROSS
0	1182	1182	1182
5	1228	1237	1212
15	1189	1202	1216
25	1075	1119	1158
35	938	1016	1079
45	746	886	994
55	515	731	872
65	305	545	676
75	160	260	257
85	54	48	52
90	3	2	2
95	0	0	0
105	0	0	0
115	0	0	0
125	0	0	0
135	0	0	0
145	0	0	0
155	0	0	0
165	0	0	0
175	0	0	0
180	0	0	0

**ZONAL LUMEN SUMMARY**

DEGREES	LUMENS	% LAMP	% FIXTURE
0-30	975	16.8	26.1
0-40	1611	27.8	43.1
0-60	2930	50.5	78.5
0-90	3734	64.4	100.0
90-120	1	0.0	0
90-150	1	0.0	0
90-180	1	0.0	0
0-180	3734	64.4	100.0

Lumen Output = 3734 lumens  
 Luminaire Efficiency = 64.4%

**SPACING CRITERION**

ALONG	ACROSS
1.26	1.40

