



BAYLIGHTER™

HBV350 SERIES High Bay Luminaire



- High Bay Luminaire
- Quarter Turn Rotary Locking Sockets
- Frame & Lens Assembly With Safety Cables
- Removable Wiring Access Plate
- Surface, Pendant or Chain Mountable
- Suitable for Damp Locations
- Available with:
 - Fluorescent, LED and LED T8 (Internally Driven)
 - .040 Aluminum Fixture Housing
 - 95% Enhanced Specular Aluminum Reflectors
 - Variety of Lenses
 - Emergency Battery Pack
 - Sensor
 - 11ga. Wire Guard
 - Variety of Mounting Accessories



Photometric Data and IES Files are Available on www.lalighting.com



LOS ANGELES LIGHTING MFG. CO.

10141 OLNEY ST. / EL MONTE, CA 91731

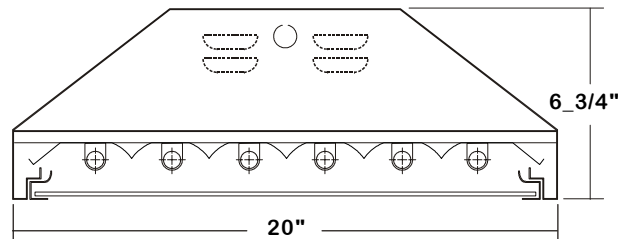
TEL : 626-454-8300 FAX : 626-454-8399

www.lalighting.com



HBV350 SERIES

CROSS SECTION



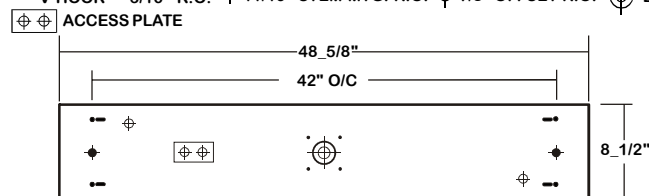
● **ALUMINUM REFLECTOR SECURED WITH QUARTER TURN FASTENERS FOR EASE OF MAINTENANCE.**

CATALOG NUMBER

	NOMINAL LENGTH	TOTAL LAMPS
HBV350-4-4M	4'	4
HBV350-5-4M	4'	5
HBV350-6-4M	4'	6
HBV350-4-4R	4'	4
HBV350-5-4R	4'	5
HBV350-6-4R	4'	6

BACK PLATE

-- V-HOOK • 3/16" K.O. ◆ 11/16" STEM MTG. K.O. ⊕ 7/8" OFFSET K.O. ⊕ 2" K.O.



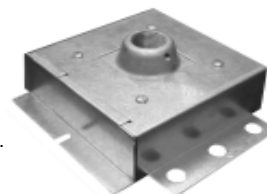
MOUNTING ACCESSORIES

● SMA - Pendant Mounting Adapter

20ga. die formed galvanized steel construction, die cast aluminum hub for 3/4" pipe pre-installed. Designed for single point pendant mount applications.

Each unit consists of:

- One Mounting Adapter assembly with lid.
- Four 3/8-16 Mounting bolts.
- One Sheet metal screw.
- One Set screw.
- 10' cable, one end free and the other end secured within fixture.
- Self-locking device secures the free end to ceiling member.

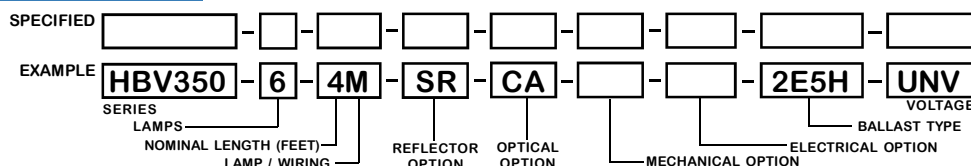


● STA - Fixture Stabilizer

18ga. die formed cold rolled steel construction. Bake white powder coated finish.



ORDERING GUIDE



NOTE: LAMP/WIRING*

M= Miniature Bi-Pin T5
R= Medium Bi-Pin T8

OPTIONS AND ACCESSORIES

● REFLECTOR OPTIONS

Specular Aluminum Reflector (95%)
White Aluminum Reflector (90%)

SUFFIX

SR
WR

● OPTICAL OPTIONS

Clear Acrylic
Clear Prismatic Acrylic
Flat White Acrylic
* Other Lens Available Upon Request

SUFFIX

CA
PA
FWA

● MECHANICAL OPTIONS

Gasketing

SUFFIX

GSK*

● ELECTRICAL OPTIONS

Emergency Battery Pack
External Line Fusing (HLR/GLR)
Radio Interference Filters
Motion Sensor

SUFFIX

BP*
ELF
RIF
MS

● BALLAST OPTIONS

Electronic Ballasts T8
Electronic T8 Step Dimming
Electronic Ballast T5
Electronic Ballast T5HO
Electronic T5HO Step Dimming

SUFFIX

E8*
E8SD
E5
E5H
E5HSD

● ACCESSORIES

Pendant Mounting Adapter
Fixture Stabilizer
Wire Guard - 11 Ga.
Fixture Suspending System
Ceiling Spacer
V-Hooks For Chain MTG.
Die Cast Hub For 3/4" Pipe

CAT.NO.

SMA
STA
WG11-HBV350
*
*
V-6
HUB

*See appropriate reference page

SPECIFICATIONS

- **TYPE**
- **CONSTRUCTION**
- **FINISH**
- **REFLECTOR**
- **DOOR FRAME**
- **OPTIC**
- **WIRE GUARDS**
- **WIRING**
- **LABELS**

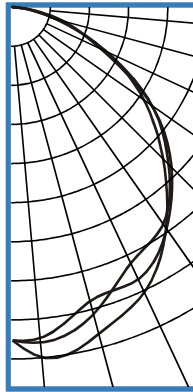
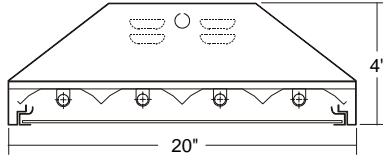
High bay luminaire for surface, pendant, or chain mounting. Must be spaced a minimum of 1 1/2" from ceiling when surface mounted.
20 gauge cold rolled steel housing with louvered vents on top for heat removal.
Quarter turn rotary locking lampholders standard. (.040 aluminum housing available as specified)
Baked white polyester finish, minimum reflectance 86%. (Powder coated finish available.)
Specular aluminum reflector standard, 95% reflectance. (White aluminum reflector available)
20 ga. cold rolled steel door frame. T-hinges and positive spring loaded latches. Safety cables attached.
Extensive variety of lenses, diffusers and louvers available.
11 ga. chrome epoxy powder coated optional.
120v 60Hz., 277v 60Hz., UNV (universal voltage 120v thru 277v.) or as otherwise specified.
Multiple levels of switching available as specified.
U.L. or ETL Listed.



PHOTOMETRIC DATA

HBV350-4-4M-SR-CA-E5H

TEST NO.=LA-T1027-1
 LAMP TYPE=F54T5HO
 NO. OF LAMP=4
 LUMENS PER LAMP=5000
 WATTS PER LAMP=54
 BALLAST FACTOR=1
 PHOTOMETRY TYPE=C



CANDLEPOWER

ANGLE	END	45	CROSS
0	5968	5968	5968
5	6301	6025	5941
15	6038	5668	5435
25	5609	5039	5360
35	4791	4716	4814
45	3797	3940	4014
55	2852	3026	3014
65	1801	1807	1715
75	767	798	909
85	130	147	135
90	1	1	2
95	0	0	0
105	0	0	0
115	0	0	0
125	0	0	0
135	0	0	0
145	0	0	0
155	0	0	0
165	0	0	0
175	0	0	0
180	0	0	0

ZONAL LUMEN SUMMARY

DEGREES	LUMENS	% LAMP	% FIXTURE
0-30	4631	23.2	28.8
0-40	7621	38.1	47.4
0-60	13332	66.7	82.9
0-90	16081	80.4	100.0
90-120	0	0.0	0
90-150	0	0.0	0
90-180	0	0.0	0
0-180	16081	80.4	100.0

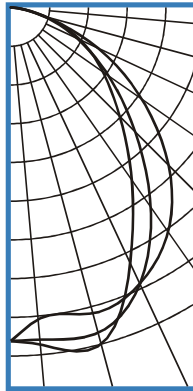
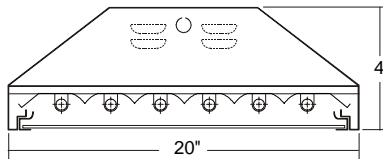
Lumen Output = 16081 lumens
 Luminaire Efficiency = 80.4%

SPACING CRITERION

ALONG	ACROSS
1.27	1.26

HBV350-6-4M-SR-CA-E5H

TEST NO.=LA-T1028-2
 LAMP TYPE=F54T5HO
 NO. OF LAMP=6
 LUMENS PER LAMP=5000
 WATTS PER LAMP=54
 BALLAST FACTOR=1
 PHOTOMETRY TYPE=C



CANDLEPOWER

ANGLE	END	45	CROSS
0	9729	9729	9729
5	9752	10083	9785
15	10122	9650	8242
25	8995	8452	7505
35	8076	6865	6578
45	6447	5489	5169
55	4578	4000	3786
65	2809	2402	2482
75	1108	1170	1380
85	201	216	188
90	2	4	1
95	0	0	0
105	0	0	0
115	0	0	0
125	0	0	0
135	0	0	0
145	0	0	0
155	0	0	0
165	0	0	0
175	0	0	0
180	0	0	0

ZONAL LUMEN SUMMARY

DEGREES	LUMENS	% LAMP	% FIXTURE
0-30	7552	25.2	31.5
0-40	12009	40.0	50.0
0-60	20054	66.8	83.5
0-90	24006	80.0	100.0
90-120	1	0.0	0
90-150	1	0.0	0
90-180	1	0.0	0
0-180	24006	80.0	100.0

Lumen Output = 24006 lumens
 Luminaire Efficiency = 80.0%

SPACING CRITERION

ALONG	ACROSS
1.30	1.09

This space is intentionally left blank.

This space is intentionally left blank.

