

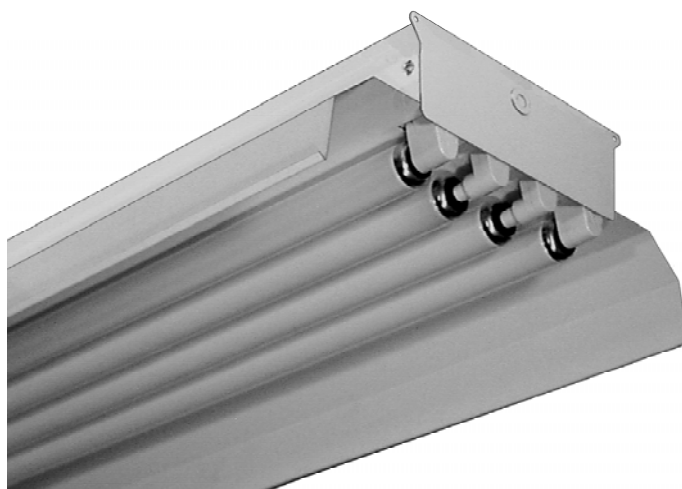


INDUSTRIAL

IND400 SERIES



16½" Wide Reflector Industrial Luminaire



- 16½" Wide Reflector Industrial Luminaire
- 22 Ga. Cold Rolled Steel Housing
- Baked White Polyester Finish
- Screw-On End Caps
- Reflector Secured by Quarter turn Fasteners
- Suitable for Damp Locations
- Available with:
 - Fluorescent and LED T8 (Internally Driven)
 - Up-Light
 - 95% Enhanced Specular Aluminum Reflector
 - Emergency Battery Pack
 - Switch
 - 14 Ga. Wire Guard



Photometric Data and IES Files are Available on www.lalighting.com



LOS ANGELES LIGHTING MFG. CO.

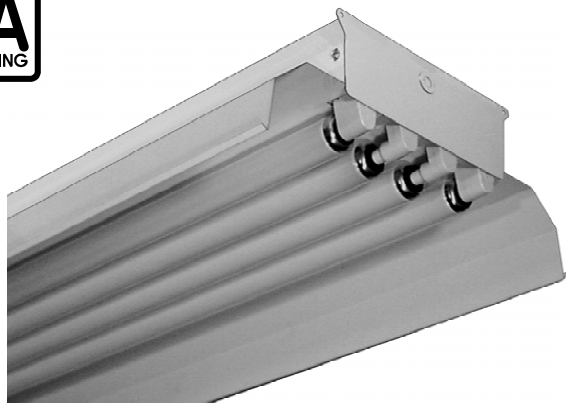
10141 OLNEY ST. / EL MONTE, CA 91731

TEL : 626-454-8300 FAX : 626-454-8399

www.lalighting.com

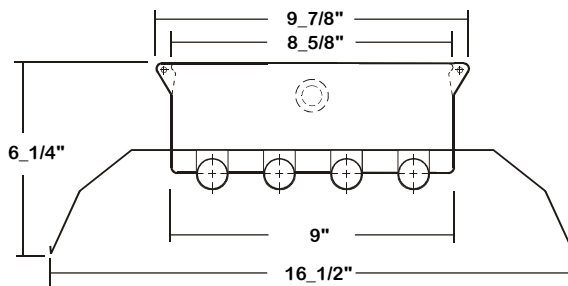
INDUSTRIAL - Fluorescent

LED Equivalent Products Available on www.lalighting.com



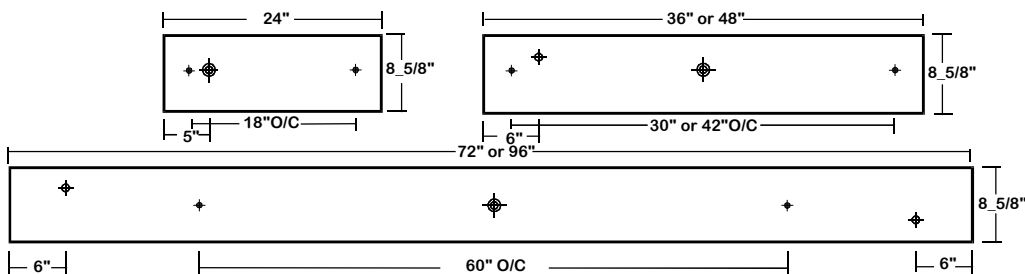
IND400 SERIES

CROSS SECTION



BACK PLATE

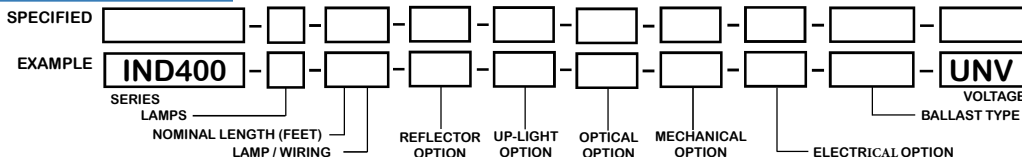
- ✦ 11/16" STEM MTG. K.O.
- ⊕ 7/8" OFFSET K.O.
- ⊕ 2" K.O.



CATALOG NUMBER

NOMINAL LENGTH	TOTAL LAMPS	NOMINAL LENGTH	TOTAL LAMPS	NOMINAL LENGTH	TOTAL LAMPS	NOMINAL LENGTH	TOTAL LAMPS	
IND400-2-2M	2'	2	IND400-2-8H	8'	2	IND400-3-6S	6'	3
IND400-2-3M	3'	2	IND400-3-2M	2'	3	IND400-3-8S	8'	3
IND400-2-4M	4'	2	IND400-3-3M	3'	3	IND400-3-4H	4'	3
IND400-2-6MT	6'	4	IND400-3-4M	4'	3	IND400-3-6H	6'	3
IND400-2-8MT	8'	4	IND400-3-6MT	6'	6	IND400-3-8H	8'	3
IND400-2-2R	2'	2	IND400-3-8MT	8'	6	IND400-4-2M	2'	4
IND400-2-3R	3'	2	IND400-3-2R	2'	3	IND400-4-3M	3'	4
IND400-2-4R	4'	2	IND400-3-3R	3'	3	IND400-4-4M	4'	4
IND400-2-6RT	6'	4	IND400-3-4R	4'	3	IND400-4-6MT	6'	8
IND400-2-8RT	8'	4	IND400-3-6RT	6'	6	IND400-4-8MT	8'	8
IND400-2-6S	6'	2	IND400-3-8RT	8'	6	IND400-4-2R	2'	4
IND400-2-8S	8'	2				IND400-4-3R	3'	4
IND400-2-4H	4'	2				IND400-4-4R	4'	4
IND400-2-6H	6'	2				IND400-4-6RT	6'	8
						IND400-4-8RT	8'	8
						IND400-4-6S	6'	4
						IND400-4-8S	8'	4
						IND400-4-4H	4'	4
						IND400-4-6H	6'	4
						IND400-4-8H	8'	4

ORDERING GUIDE



NOTE: LAMP/WIRING*
 M = Miniature Bi-Pin T5
 MT = Miniature Bi-Pin T5, Tandem Wiring
 R = Medium Bi-Pin T8
 RT = Medium Bi-Pin T8, Tandem Wiring
 S = Slimline
 H = High Output (800MA)

OPTIONS AND ACCESSORIES

- **REFLECTOR OPTIONS** SUFFIX
 Specular Aluminum Reflector (95%) SR
- **UP-LIGHT OPTIONS** SUFFIX
 10% Uplight S10
 20% Uplight S20

- **ELECTRICAL OPTIONS** SUFFIX
 Emergency Battery Pack BP*
 External Line Fusing (HLR/GLR) ELF
 Plug-In Branch Wiring Connector System PIW*
 Switch *

- **BALLAST OPTIONS**
 Electronic T5
 Electronic T5HO
 Electronic S/T8 Instant Start
 Electronic T8 Rapid Start
 Electronic T8HO
 - **ACCESSORIES**
 Wire Guard - 14 Ga. WG14-IND400
 12" Coupling For Row Mounting CMC-400
 Channel Hangers CH-400
 6" Leg Height V-Hook V6
 Fixture Suspension System *
- SUFFIX
 xE5
 xE5H
 xE8I
 xE8R
 xE8H
 x= Number of Lamps per Ballast

*Refer to www.lalighting.com/resources for more information

SPECIFICATIONS


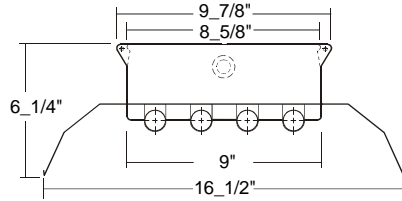
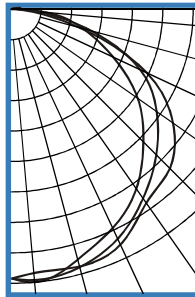
- **TYPE** Industrial luminaire for surface or suspended mounting.
- **CONSTRUCTION** 22 ga. cold rolled steel housing. (20 ga. housing available as specified.) End plates are fastened to housing by sheet metal screws to assure rigidity.
- **FINISH** Baked white polyester finish, minimum reflectance 86%. (Powder coated finish available.)
- **REFLECTOR** 22 ga. cold rolled steel reflector standard.
- **WIRING** 120v 60Hz., 277v 60Hz., UNV (universal voltage 120v thru 277v.) or as otherwise specified.
- **LABELS** U.L. or ETL Listed. Suitable for damp locations.



PHOTOMETRIC DATA

IND400-4-4R-E8

TEST NO.=LA-T0283
 LAMP TYPE=FO32T8
 NO. OF LAMP=4
 LUMENS PER LAMP=2900
 WATTS PER LAMP=32
 BALLAST FACTOR=1
 PHOTOMETRY TYPE=C

CANDLEPOWER

ANGLE	END	45	CROSS
0	2849	2849	2849
5	2900	2877	2801
15	2736	2822	2816
25	2550	2675	2743
35	2312	2437	2497
45	1978	2172	2377
55	1633	1878	2090
65	1183	1503	1577
75	783	868	744
85	363	248	138
90	112	64	11
95	96	55	6
105	43	35	3
115	18	16	0
125	11	6	0
135	3	2	0
145	0	0	0
155	0	0	0
165	0	0	0
175	0	0	0
180	0	0	0

ZONAL LUMEN SUMMARY

DEGREES	LUMENS	% LAMP	% FIXTURE
0-30	2299	19.8	23.4
0-40	3819	32.9	38.9
0-60	7180	61.9	73.2
0-90	9695	83.6	98.9
90-120	104	0.9	1.1
90-150	110	1.0	1.1
90-180	111	1.0	1.1
0-180	9806	84.5	100.0

Lumen Output = 9806 lumens
 Luminaire Efficiency = 84.5%

SPACING CRITERION

ALONG	ACROSS
1.27	1.35

