



# INDUSTRIAL

## KDI100 SERIES



### Knocked Down One-Light Industrial



- Knocked Down One-Light Industrial Luminaire
- 22 Ga. Cold Rolled Steel Housing
- Baked White Polyester Finish
- Screw-On End Caps
- End Plates May be Used as Channel Couplings
- 22 Ga. Cold Rolled Steel Reflector
- Reflector Secured by Two Quarter Turn Fasteners
- Suitable for Damp Locations
- Available with:
  - Fluorescent, LED and LED T8 (Internally Driven)
  - 14 Ga. Wire Guard
  - 4" Leg Height V-Hook



Photometric Data and IES Files are Available on [www.lalighting.com](http://www.lalighting.com)



**LOS ANGELES LIGHTING MFG. CO.**

10141 OLNEY ST. / EL MONTE, CA 91731

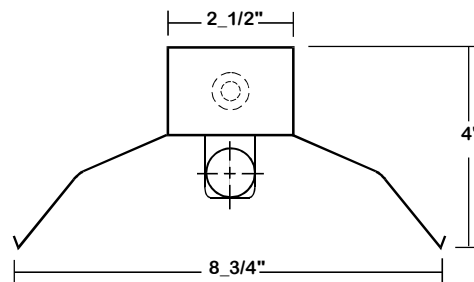
TEL : 626-454-8300 FAX : 626-454-8399

[www.lalighting.com](http://www.lalighting.com)



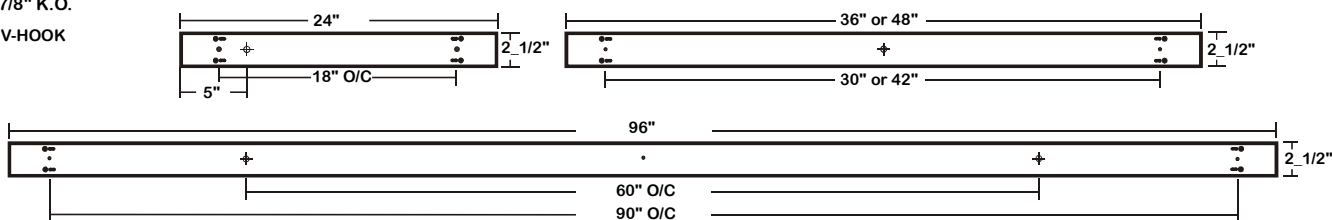
# KDI100 SERIES

## CROSS SECTION



## BACK PLATE

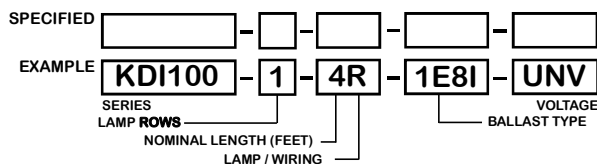
- 3/16" MTG. HOLE
- $\phi$  7/8" K.O.
- V-HOOK



## CATALOG NUMBER

CATALOG NUMBER	NOMINAL LENGTH	TOTAL LAMPS	LAMP TYPE
KDI100-1-2R-1E8I-UNV	2'	1	T8
KDI100-1-3R-1E8I-UNV	3'	1	T8
KDI100-1-4R-1E8I-UNV	4'	1	T8
KDI100-1-8RT-2E8I-UNV	8'	2	T8

## ORDERING GUIDE



## AVAILABLE ACCESSORIES

- **ACCESSORIES**  
Wire Guard - 14 Ga.  
4" Leg Height V-Hook
- CAT. NO.  
WG14-KDI100  
V4

## SPECIFICATIONS

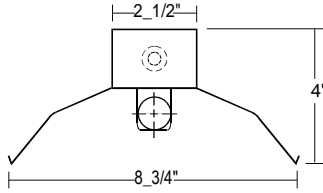
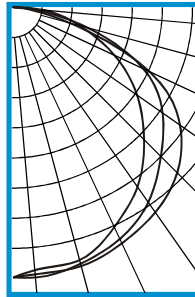
- **TYPE** Knocked down one-light industrial.
- **CONSTRUCTION** 22 ga. cold rolled steel housing. End plates are fastened to housing by sheet metal screws to assure rigidity. End plates may be used as channel couplings.
- **FINISH** Bakes white polyester finish standard, minimum reflectance 86%
- **REFLECTOR** 22 ga. cold rolled steel reflector.
- **WIRE GUARDS** Chrome epoxy powder coated.
- **WIRING** UNV (universal voltage 120v thru 277v.) ballasts as available, or as otherwise specified.
- **LABELS** U.L. Listed. Suitable for damp locations.



**PHOTOMETRIC DATA**

**KDI100-1-4R-E8**

TEST NO.=LA-T0280-1  
 LAMP TYPE=FO32T8  
 NO. OF LAMP1  
 LUMENS PER LAMP=2900  
 WATTS PER LAMP=32  
 BALLAST FACTOR=1  
 PHOTOMETRY TYPE=C



**CANDLEPOWER**

ANGLE	END	45	CROSS
0	757	757	757
5	738	760	751
15	732	743	750
25	676	714	727
35	610	663	698
45	519	586	651
55	422	511	570
65	311	400	418
75	190	211	154
85	84	48	27
90	24	12	2
95	7	5	0
105	2	2	0
115	1	1	0
125	0	0	0
135	0	0	0
145	0	0	0
155	0	0	0
165	0	0	0
175	0	0	0
180	0	0	0

**ZONAL LUMEN SUMMARY**

DEGREES	LUMENS	% LAMP	% FIXTURE
0-30	610	21.0	23.8
0-40	1023	35.3	39.9
0-60	1929	66.5	75.2
0-90	2566	88.1	99.6
90-120	9	0.3	0.4
90-150	9	0.3	0.4
90-180	9	0.3	0.4
0-180	2566	88.5	100.0

Lumen Output = 2566 lumens  
 Luminaire Efficiency = 88.5%

**SPACING CRITERION**

ALONG	ACROSS
1.26	1.41

This space is intentionally left blank.

This space is intentionally left blank.

This space is intentionally left blank.

