



INDUSTRIAL

KDI100 SERIES



Knocked Down One-Light Industrial



- Knocked Down One-Light Industrial Luminaire
- 22 Ga. Cold Rolled Steel Housing
- Baked White Polyester Finish
- Screw-On End Caps
- End Plates May be Used as Channel Couplings
- 22 Ga. Cold Rolled Steel Reflector
- Reflector Secured by Two Quarter Turn Fasteners
- Suitable for Damp Locations
- Available with:
 - Fluorescent, LED and LED T8 (Internally Driven)
 - 14 Ga. Wire Guard
 - 4" Leg Height V-Hook

Photometric Data and IES Files are Available on www.lalighting.com



LOS ANGELES LIGHTING MFG. CO.

10141 OLNEY ST. / EL MONTE, CA 91731

TEL : 626-454-8300 FAX : 626-454-8399

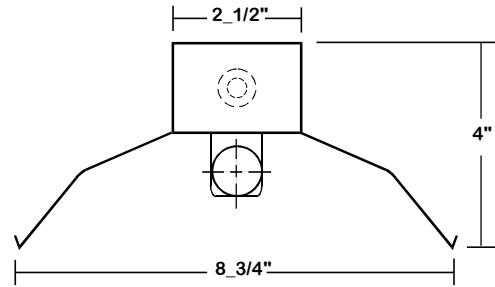
www.lalighting.com

INDUSTRIAL - LED T8 (Internally Driven)



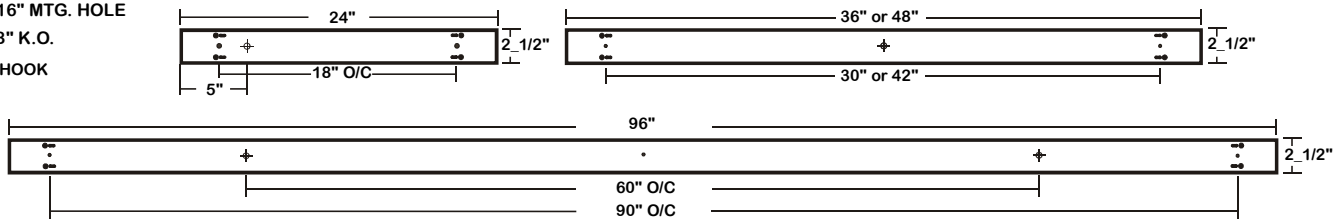
KDI100 SERIES - LED T8

CROSS SECTION



BACK PLATE

- 3/16" MTG. HOLE
- 7/8" K.O.
- V-HOOK



CATALOG NUMBER

CATALOG NUMBER	NOMINAL LENGTH	TOTAL MODULES
KDI100-1-2Lx	2'	1
KDI100-1-3Lx	3'	1
KDI100-1-4Lx	4'	1
KDI100-1-8LxT	8'	2

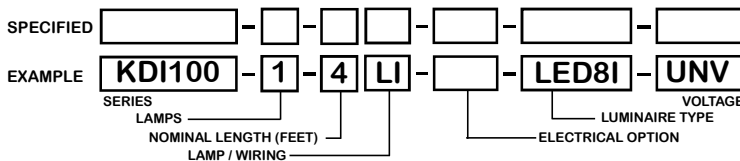
TS2 - LED Luminaire On/Off Safety Switch



- Easily accessible on exterior of wire way.
- Allows individual fixture to be switched ON/OFF during re-lamping or Maintenance.

- Prevents damage to lamp and electrical shock during lamping and re-lamping.
- Allows safe entry to wire way channel where power connector can be disconnected for maintenance to fixture.

ORDERING GUIDE



LAMP / WIRING

LI = LED T8 internal driver light tube.
Both ends powered.
Shunted sockets used.



LR = LED T8 internal driver light tube.
Single end powered.
Non-shunted sockets used.



OPTIONS AND ACCESSORIES

- **ELECTRICAL OPTIONS**
LED Luminaire ON/OFF Safety Switch

SUFFIX
TS2

- **ACCESSORIES**
Wire Guard - 14 Ga.
4" Leg Height V-Hook

CAT. NO.
WG14-KDI100
V4

*See appropriate reference page

SPECIFICATIONS

- **TYPE**: Knocked down one-light industrial.
- **CONSTRUCTION**: 22 ga. cold rolled steel housing. End plates are fastened to housing by sheet metal screws to assure rigidity. End plates may be used as channel couplings.
- **FINISH**: Bakes white polyester finish standard, minimum reflectance 86%
- **REFLECTOR**: 22 ga. cold rolled steel reflector.
- **WIRE GUARDS**: Chrome epoxy powder coated.
- **WIRING**: Operate LED T8 internally driven light tube(s)**.
- **LABELS**: Suitable for damp locations.

** Lamp(s) by others.

