

LED T8 - SPECIAL PURPOSE

MCR200 SERIES

Class 100 Clean Room Metal Sided



- Class 100 Clean Room Metal Sided Luminaire For LED T8 Internal Driver Light Tube (by Others)
- Full Length Piano Hinge & Captive Screws
- Inverted Nominal .125 Clear Prismatic Acrylic Lens Standard
- All Parts Are Fitted and Sealed
- Welded And Painted After Fabrication

• Available with:

Heavy Duty Safety Switch



LOS ANGELES LIGHTING MFG. CO.

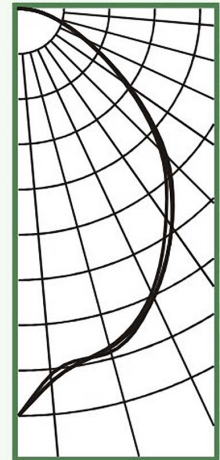
10141 OLNEY ST. / EL MONTE, CA 91731

<http://www.lalighting.com>

TEL : 626-454-8300 FAX : 626-454-8399

MCR220-3-4L-PA-LED8

TEST NO.=LA-T1827-2
LAMP TYPE=LED T8, 4'
NO. OF LAMP=3
LUMENS PER LAMP=1300
WATTS PER LAMP=15
BALLAST FACTOR=1
PHOTOMETRY TYPE=C



CANDLEPOWER

Angle	End	45	Cross
0	1353	1353	1353
5	1245	1221	1245
15	1164	1181	1168
25	1043	1057	1060
35	852	884	885
45	664	678	693
55	429	445	442
65	247	245	237
75	125	122	122
85	40	38	36
90	3	3	3
95	0	0	0
105	0	0	0
115	0	0	0
125	0	0	0
135	0	0	0
145	0	0	0
155	0	0	0
165	0	0	0
175	0	0	0
180	0	0	0

ZONAL LUMEN SUMMARY

DEGREES	LUMENS	% LAMP	% FIXTURE
0-30	939	24.1	33.4
0-40	1489	39.2	52.9
0-60	2410	61.8	85.6
0-90	2813	72.1	100.0
90-120	1	0.0	0.0
90-150	1	0.0	0.0
90-180	1	0.0	0.0
0-180	2813	72.1	100.0

Luminaire Efficiency = 72.1%

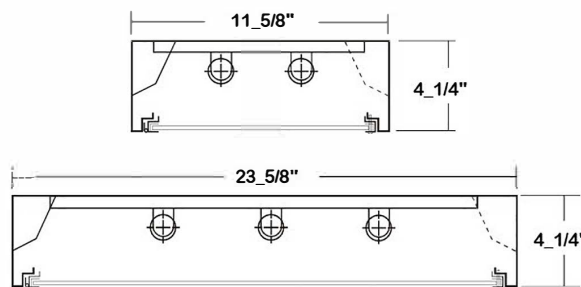
SPACING CRITERION

ALONG	ACROSS
1.06	1.09



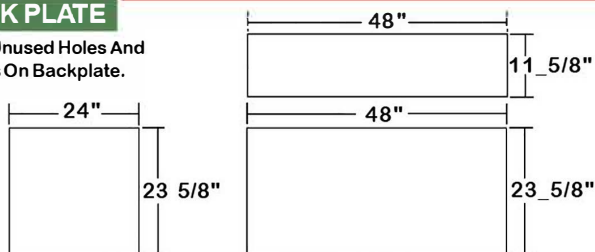
MCR200 SERIES - LED T8

CROSS SECTION



BACK PLATE

*No Unused Holes And KO's On Backplate.



SAFETY SWITCH



TS2 - LED Luminaire On/Off Safety Switch

- Easily accessible on exterior of wire way.
- Allows individual fixture to be switched ON/OFF during re-lamping or Maintenance.
- Prevents damage to lamp and electrical shock during lamping and re-lamping.
- Allows safe entry to wire way channel where power connector can be disconnected for maintenance to fixture.

CATALOG NUMBER

	NOMINAL LENGTH	TOTAL LAMPS		NOMINAL LENGTH	TOTAL LAMPS
MCR210-2-4LI	1'X4'	2	MCR220-4-2LI	2'X2'	4
MCR210-2-4LR	1'X4'	2	MCR220-4-2LR	2'X2'	4
MCR220-2-2LI	2'X2'	2	MCR220-2-4LI	2'X4'	2
MCR220-2-2LR	2'X2'	2	MCR220-2-4LR	2'X4'	2
MCR220-3-2LI	2'X2'	3	MCR220-3-4LI	2'X4'	3
MCR220-3-2LR	2'X2'	3	MCR220-3-4LR	2'X4'	3
			MCR220-4-4LI	2'X4'	4
			MCR220-4-4LR	2'X4'	4

DOOR FRAME INFORMATION

CROSS SECTION

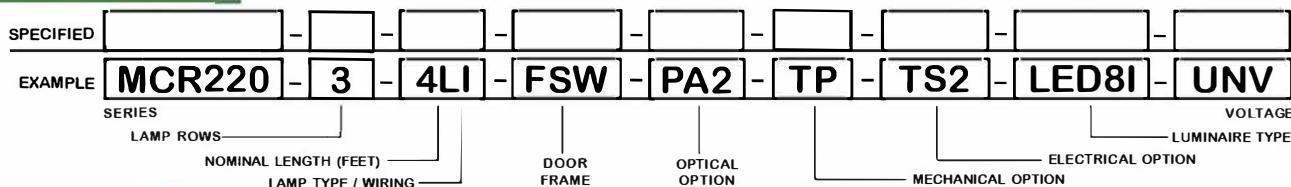


EXPLANATION

1. Inverted Lens.
2. Continuous Piano Hinge.
3. Two 10-24 Captive Machine Screws.
4. Sealed With Closed Cell Neoprene Gasket.



ORDERING GUIDE



LAMP TYPE

LI = LED T8 internal driver light tube.
Both ends powered.
Shunted sockets used.



LR = LED T8 internal driver light tube.
Single end powered.
Non-shunted sockets used.



OPTIONS AND ACCESSORIES

OPTICAL OPTIONS

Option	SUFFIX
Polycarbonate Lenses	*
High Impact Acrylic	*
Clear Prismatic Acrylic Nom. .125	PA2
Flat White Matte Diffusers	FWA

MECHANICAL OPTIONS

Option	SUFFIX
Tamper Proof Screw	TP

ELECTRICAL OPTIONS

Option	SUFFIX
LED Luminaire ON/OFF Safety Switch	TS2

*See Appropriate Reference Page

SPECIFICATIONS

** Lamp(s) by others.

- **TYPE** Surface mounted square sided class 100 clean room fixture for LED T8 internal driver light tube(s)**. Applicable where a sealed ceiling situation exists.
- **CONSTRUCTION** 20 ga. cold rolled steel welded housing. All parts are fitted and sealed, no unused holes or KO's.
- **FINISH** Baked white powder coated finish, minimum reflectance 90%, painted after fabrication.
- **DOOR FRAME** 20 gauge cold rolled steel. Full length piano hinge. Captive screw catch. Door frame and lens sealed with closed cell neoprene gasket.
- **OPTICS** Inverted clear prismatic acrylic lens standard, nominal .125 overall thickness.
- **WIRING** Operates LED T8 internal driver light tube(s)**.
- **LABELS** U.L. Listed. Suitable for damp locations.

