



METAL SIDED

MDH420 SERIES 2X4 Metal Sided Luminaire



- 2X4 Metal Sided Surface Mounted Deep Housing Luminaire
- 20 Gauge Cold Rolled Steel Welded Housing
- Powder Coated Finish / Painted After Fabrication
- 2" Deep Regressed Extruded Aluminum Door Frame
- T-Hinges And Spring Loaded Latches
- One Way Polyurethane Gasketed
- Suitable for Damp Locations
- Available with:
 - Fluorescent, LED and LED T8 (Internally Driven)
 - Variety of Lenses
 - Emergency Battery Pack



Photometric Data and IES Files are Available on www.lalighting.com

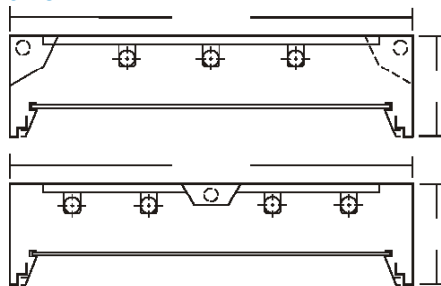


LOS ANGELES LIGHTING MFG. CO.
 10141 OLNEY ST. / EL MONTE, CA 91731
TEL : 626-454-8300 FAX : 626-454-8399
www.lalighting.com



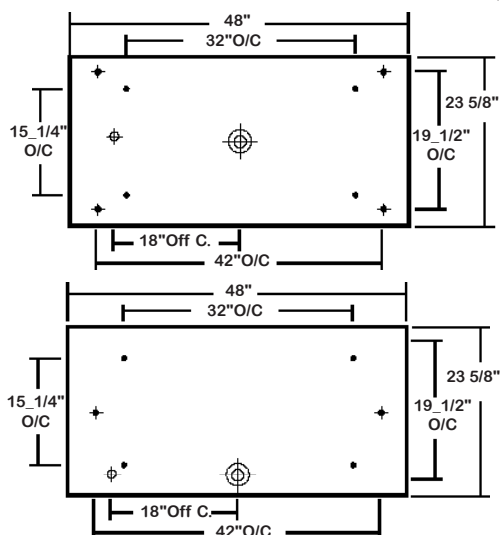
MDH420 SERIES 2x4

CROSS SECTION



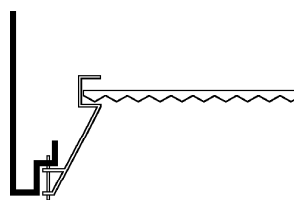
BACK PLATE

- 3/8" K.O.
- 11/16" STEM MTG. K.O.
- 7/8" OFFSET K.O.
- 2" K.O.



DOOR FRAME INFORMATION

• CROSS SECTION



R2 W

FINISHES

- W - White Enamel
- B - Black Enamel
- N - Natural Anodized Aluminum

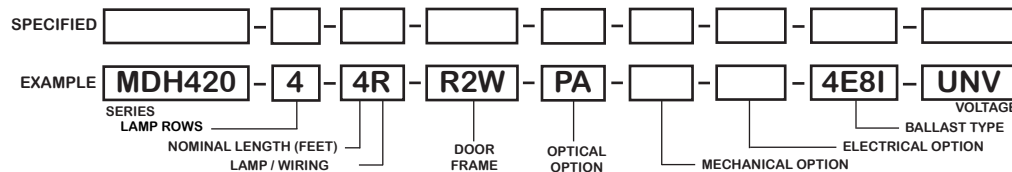
STYLES

R2 - 2" Regress

CATALOG NUMBER

CATALOG NUMBER	NOMINAL WIDTH X LENGTH	TOTAL LAMPS
MDH420-2-4M	2' X 4'	2
MDH420-3-4M	2' X 4'	3
MDH420-4-4M	2' X 4'	4
MDH420-2-4R	2' X 4'	2
MDH420-3-4R	2' X 4'	3
MDH420-4-4R	2' X 4'	4

ORDERING GUIDE



NOTE: LAMP/WIRING*
M= Miniature Bi-Pin T5
R= Medium Bi-Pin T8

OPTIONS AND ACCESSORIES

• OPTICAL OPTIONS

- Clear Prismatic Acrylic
- Polycarbonate Lenses
- High Impact Acrylic
- Note: Other lens available upon request

SUFFIX

- PA
- *
- *

• MECHANICAL OPTIONS

- Gasketing
- ELECTRICAL OPTIONS
- Emergency Battery Pack
- External Line Fusing (HLR/GLR)

SUFFIX

- GSK*
- SUFFIX
- BP*
- ELF

• BALLAST OPTIONS*

- Electronic T5
- Electronic T5HO
- Electronic T8 Instant Start
- Electronic T8 Rapid Start
- Electronic T8HO
- x = Number of Lamps per Ballast

SUFFIX

- xE5
- xE5H
- xE8I
- xE8R
- xE8H

• ACCESSORIES

- Fixture Suspension System

CAT. NO.

*

*Refer to www.lalighting.com/resources for more information

SPECIFICATIONS

• TYPE

Surface mounted, metal sided deep housing, available in various lengths and widths. Specifically designed to accommodate 2" deep regressed extruded aluminum door frame.

• CONSTRUCTION

20 ga. cold rolled steel welded housing.

• FINISH

Baked white powder coated finish, minimum reflectance 90%, painted after fabrication.

• DOOR FRAME

Heavy wall 2" deep aluminum extrusion. T-hinge, positive spring loaded latch. Two gussets installed in each corner for maximum strength and true miter alignment.

• GASKET

One way polyurethane gasketed standard. More options available.

• OPTICS

Clear prismatic acrylic standard. Extensive variety of lenses, diffusers and louvers available.

• WIRING

120v 60Hz., 277v 60Hz., UNV (universal voltage 120v thru 277v.) or as otherwise specified.

• LABELS

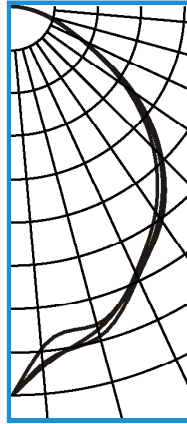
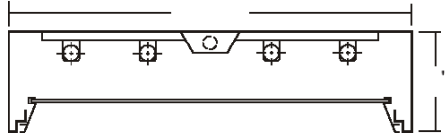
U.L. Listed. Suitable for damp locations.



PHOTOMETRIC DATA

MDH420-4-4R-R2W-PA-E8

TEST NO.=LA-T1161
 LAMP TYPE=FO32T8
 NO. OF LAMP=4
 LUMENS PER LAMP=2900
 WATTS PER LAMP=32
 BALLAST FACTOR=1
 PHOTOMETRY TYPE=C



CANDLEPOWER

ANGLE	END	45	CROSS
0	3111	3111	3111
5	2737	2886	2860
15	2631	2670	2727
25	2340	2364	2382
35	1995	2048	2082
45	1586	1651	1681
55	1095	1130	1171
65	596	606	598
75	298	269	267
85	73	66	55
90	1	2	1
95	0	0	0
105	0	0	0
115	0	0	0
125	0	0	0
135	0	0	0
145	0	0	0
155	0	0	0
165	0	0	0
175	0	0	0
180	0	0	0

ZONAL LUMEN SUMMARY

DEGREES	LUMENS	% LAMP	% FIXTURE
0-30	2125	18.3	32.0
0-40	3408	29.4	51.3
0-60	5695	49.1	85.8
0-90	6637	57.2	100.0
90-120	0	0.0	0
90-150	0	0.0	0
90-180	0	0.0	0
0-180	6638	57.2	100.0

Lumen Output = 6638 lumens
 Luminaire Efficiency = 57.2%

SPACING CRITERION

ALONG	ACROSS
1.05	1.07

This space is intentionally left blank.

This space is intentionally left blank.

This space is intentionally left blank.

