



# METAL SIDED

## MHL310 SERIES



## Metal Sided Surface Mounted Luminaire



- Metal Sided Surface Mounted Luminaire
- Powder Coated Finish / Painted After Fabrication
- Door Frame Screwed at End Corner
- T-Hinges And Spring Loaded Latches
- One Way Polyurethane Gasketed
- Suitable for Damp Locations
- Available with:
  - Fluorescent, LED and LED T8 (Internally Driven)
  - Variety of Lenses
  - Tamper Proof Screws
  - Emergency Battery Pack



*Photometric Data and IES Files are Available on [www.lalighting.com](http://www.lalighting.com)*

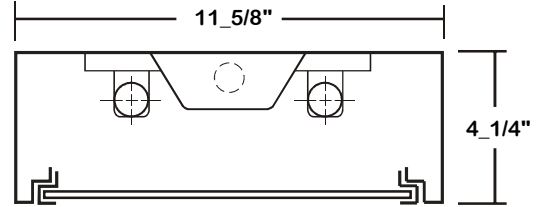


**LOS ANGELES LIGHTING MFG. CO.**  
 10141 OLNEY ST. / EL MONTE, CA 91731  
**TEL : 626-454-8300 FAX : 626-454-8399**  
**[www.lalighting.com](http://www.lalighting.com)**



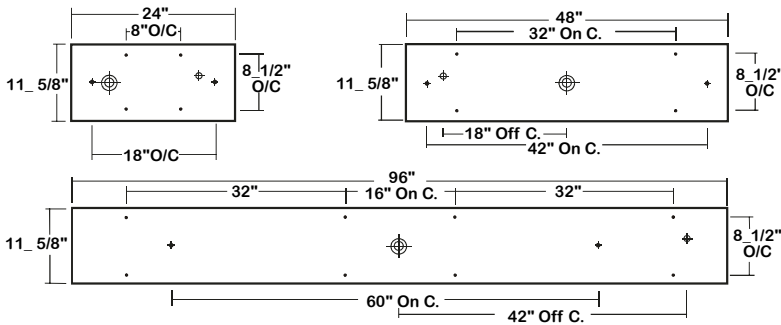
# MHL310 SERIES

## CROSS SECTION



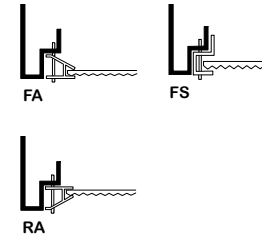
## BACK PLATE

- 3/8" K.O.    ♦ 11/16" STEM MTG. K.O.    ⊕ 7/8" OFFSET K.O.    ⊕ 2" K.O.



## DOOR FRAME INFORMATION

### CROSS SECTION



### FS W

#### FINISHES

- W - White Enamel
- B - Black Enamel
- N - Natural Anodized Aluminum

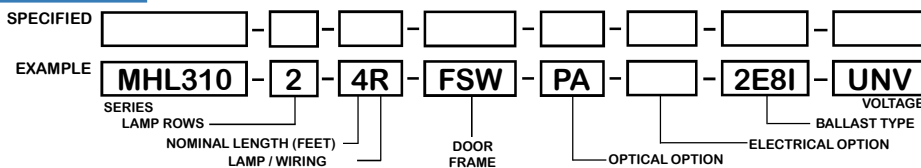
#### STYLES

- FS - Flat Steel
- FA - Flat Extruded Aluminum
- RA - 5/8" Regressed Extruded Aluminum

## CATALOG NUMBER

	NOMINAL LENGTH	TOTAL LAMPS		NOMINAL LENGTH	TOTAL LAMPS		NOMINAL LENGTH	TOTAL LAMPS		NOMINAL LENGTH	TOTAL LAMPS
MHL310-1-2M	2'	1	MHL310-3-2M	2'	3	MHL310-1-2R	2'	1	MHL310-3-2R	2'	3
MHL310-1-4M	4'	1	MHL310-3-4M	4'	3	MHL310-1-4R	4'	1	MHL310-3-4R	4'	3
MHL310-1-8MT	8'	2	MHL310-3-8MT	8'	6	MHL310-1-8RT	8'	2	MHL310-3-8RT	8'	6
MHL310-2-2M	2'	2	MHL310-4-2M	2'	4	MHL310-2-2R	2'	2	MHL310-4-2R	2'	4
MHL310-2-4M	4'	2	MHL310-4-4M	4'	4	MHL310-2-4R	4'	2	MHL310-4-4R	4'	4
MHL310-2-8MT	8'	4	MHL310-4-8MT	8'	8	MHL310-2-8RT	8'	4	MHL310-4-8RT	8'	8

## ORDERING GUIDE



### NOTE: LAMP/WIRING\*

- M= Miniature Bi-Pin T5
- R = Medium Bi-Pin T8
- MT= Miniature Bi-Pin T5, Tandem Wiring
- RT = Medium Bi-Pin T8, Tandem Wiring

## OPTIONS AND ACCESSORIES

### OPTICAL OPTIONS

- Clear Acrylic
- Clear Prismatic Acrylic
- Flat White Acrylic
- Polycarbonate Lenses
- High Impact Acrylic
- Note: Other lens available upon request

#### SUFFIX

- CA
- PA
- FWA
- \*
- \*

### MECHANICAL OPTIONS

- Tamper Proof Screws (Hex Socket With Post)
- Gasketing
- ELECTRICAL OPTIONS
- Emergency Battery Pack
- External Line Fusing (HLR/GLR)

#### SUFFIX

- TP
- GSK
- SUFFIX
- BP\*
- ELF

### BALLAST OPTIONS\*

- Electronic T5
- Electronic T5HO
- Electronic T8 Instant Start
- Electronic T8 Rapid Start
- Electronic T8HO
- x = Number of Lamps per Ballast

#### SUFFIX

- xE5
- xE5H
- xE8
- xE8R
- xE8H

### ACCESSORIES

- Fixture Suspension System

#### CAT. NO.

\*

\*Refer to [www.lalighting.com/resources](http://www.lalighting.com/resources) for more information

## SPECIFICATIONS

- TYPE
- CONSTRUCTION
- FINISH
- DOOR FRAME
- GASKET
- OPTICS
- WIRING
- LABELS

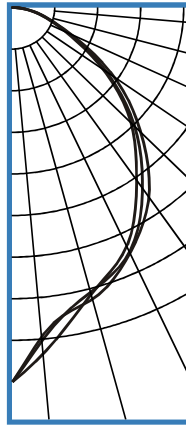
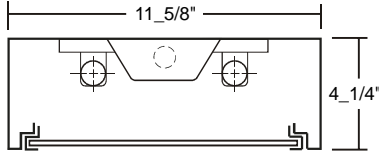
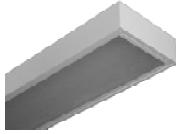
Surface mounted, metal sided, modular luminaire. Available in various lengths.  
 20 ga. cold rolled steel welded housing.  
 Baked white powder coated finish, minimum reflectance 90%, painted after fabrication.  
 20 gauge cold rolled steel or extruded aluminum in various finishes. T-hinges, positive spring loaded latches.  
 One way polyurethane gasketed standard. More options available.  
 Clear prismatic acrylic standard. Extensive variety of lenses, diffusers and louvers available.  
 120v 60Hz., 277v 60Hz., UNV (universal voltage 120v thru 277v.) or as otherwise specified.  
 U.L. Listed. Suitable for damp locations.



**PHOTOMETRIC DATA**

**MHL310-2-4R-FSW-PA-E8**

TEST NO.=LA-T0439  
 LAMP TYPE=FO32T8  
 NO. OF LAMP=2  
 LUMENS PER LAMP=2900  
 WATTS PER LAMP=32  
 BALLAST FACTOR=1  
 PHOTOMETRY TYPE=C



**CANDLEPOWER**

ANGLE	END	45	CROSS
0	1576	1576	1576
5	1388	1404	1460
15	1269	1238	1246
25	1136	1131	1105
35	969	922	880
45	737	702	681
55	501	463	447
65	257	248	233
75	126	123	117
85	37	38	34
90	2	4	2
95	0	0	0
105	0	0	0
115	0	0	0
125	0	0	0
135	0	0	0
145	0	0	0
155	0	0	0
165	0	0	0
175	0	0	0
180	0	0	0

**ZONAL LUMEN SUMMARY**

DEGREES	LUMENS	% LAMP	% FIXTURE
0-30	1011	17.4	34.1
0-40	1591	27.4	53.7
0-60	2558	44.1	86.3
0-90	2963	51.1	100.0
90-120	1	0.0	0
90-150	1	0.0	0
90-180	1	0.0	0
0-180	2964	51.1	100.0

Lumen Output = 2964 lumens  
 Luminaire Efficiency = 51.1%

**SPACING CRITERION**

ALONG	ACROSS
1.00	0.97

This space is intentionally left blank.

This space is intentionally left blank.

This space is intentionally left blank.

