



METAL SIDED

MIC100 SERIES



Direct / Indirect Metal Sided Surface



- Direct / Indirect Metal Sided Surface Mounted Luminaire
- 20 Gauge Cold Rolled Steel Welded Housing
- Powder Coated Finish / Painted After Fabrication
- High Reflectance, Low Gloss Matte White Finish Reflector
- Center Perforated Light Shield with Polyethylene Trims
- Suitable for Damp Locations
- Available with:
 - Fluorescent, LED and LED T8 (Internally Driven)
 - Curve Contour Acrylic Lens
 - Emergency Battery Pack



Photometric Data and IES Files are Available on www.lalighting.com



LOS ANGELES LIGHTING MFG. CO.

10141 OLNEY ST. / EL MONTE, CA 91731

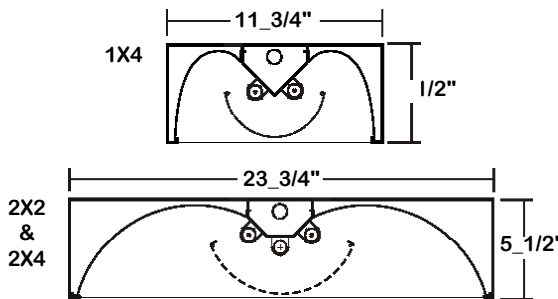
TEL : 626-454-8300 FAX : 626-454-8399

www.lalighting.com



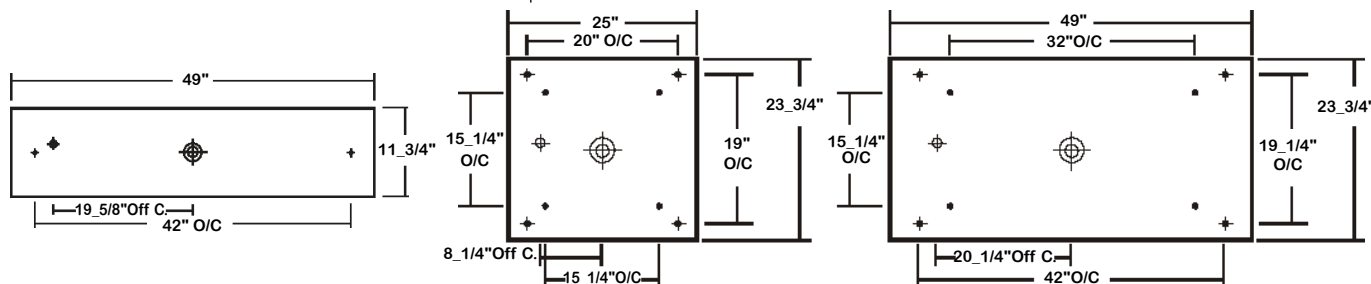
MIC100 SERIES

CROSS SECTION



BACK PLATE

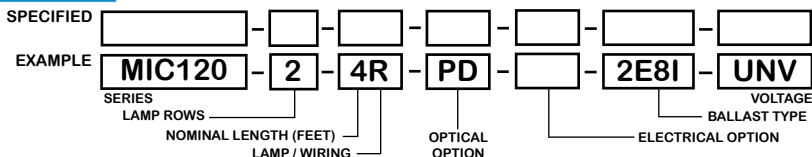
- 3/8" K.O. ◆ 11/16" STEM MTG. K.O. ⊕ 7/8" OFFSET K.O. ⊕ 2" K.O.



CATALOG NUMBER

	NOMINAL WIDTH X LENGTH	TOTAL LAMPS		NOMINAL WIDTH X LENGTH	TOTAL LAMPS		NOMINAL WIDTH X LENGTH	TOTAL LAMPS
MIC110-1-4M	1' X 4'	1	MIC120-1-2M	2' X 2'	1	MIC120-1-4M	2' X 4'	1
MIC110-2-4M	1' X 4'	2	MIC120-2-2M	2' X 2'	2	MIC120-2-4M	2' X 4'	2
MIC110-1-4R	1' X 4'	1	MIC120-3-2M	2' X 2'	3	MIC120-3-4M	2' X 4'	3
MIC110-2-4R	1' X 4'	2	MIC120-1-2R	2' X 2'	1	MIC120-1-4R	2' X 4'	1
			MIC120-2-2R	2' X 2'	2	MIC120-2-4R	2' X 4'	2
			MIC120-3-2R	2' X 2'	3	MIC120-3-4R	2' X 4'	3

ORDERING GUIDE



NOTE: LAMP/WIRING*
 M= Miniature Bi-Pin T5
 R = Medium Bi-Pin T8

OPTIONS AND ACCESSORIES

OPTICAL OPTIONS

- Perforated Shield/ White Acrylic
- Curve Contour Acrylic Lens / Linear Pattern

SUFFIX
 PDA
 CLP**

ELECTRICAL OPTIONS

- Emergency Battery Pack
- External Line Fusing (HLR/GLR)

SUFFIX
 BP*
 ELF
 RIF

BALLAST OPTIONS*

- Electronic T5
- Electronic T5HO
- Electronic T8 Instant Start
- Electronic T8 Rapid Start
- Electronic T8HO

SUFFIX
 xE5
 xE5H
 xE8I
 xE8R
 xE8H

x = Number of Lamps per Ballast

*Refer to www.lalighting.com/resources for more information

SPECIFICATIONS

- TYPE
- CONSTRUCTION
- FINISH
- REFLECTOR
- OPTICS
- WIRING
- LABELS

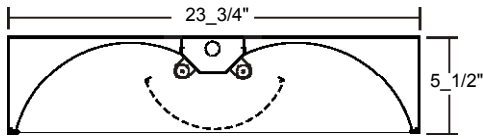
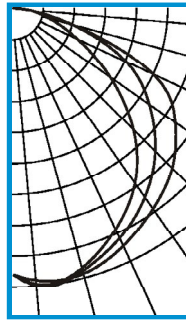
Direct / indirect metal sided surface mounted luminaires.
 20 ga. cold rolled steel welded housing.
 Baked white powder coated finish, paint after fabrication.
 Cold rolled steel reflectors, high reflectance, low gloss matte white finish.
 Perforated center-mount metal light shield with polyethylene protecting trims, snap out for easy re-lamping and maintenance.
 120v 60Hz., 277v 60Hz., UNV (universal voltage 120v thru 277v.) or as otherwise specified.
 U.L. Listed. Suitable for damp locations.



PHOTOMETRIC DATA

MIC120-2-4R-PD-E8

TEST NO.=LA-T1548-3
 LAMP TYPE=FO32T8
 NO. OF LAMP=2
 LUMENS PER LAMP=2900
 WATTS PER LAMP=32
 BALLAST FACTOR=1
 PHOTOMETRY TYPE=C



CANDLEPOWER

ANGLE	END	45	CROSS
0	1182	1182	1182
5	1228	1237	1212
15	1189	1202	1216
25	1075	1119	1158
35	938	1016	1079
45	746	886	994
55	515	731	872
65	305	545	676
75	160	260	257
85	54	48	52
90	3	2	2
95	0	0	0
105	0	0	0
115	0	0	0
125	0	0	0
135	0	0	0
145	0	0	0
155	0	0	0
165	0	0	0
175	0	0	0
180	0	0	0

ZONAL LUMEN SUMMARY

DEGREES	LUMENS	% LAMP	% FIXTURE
0-30	975	16.8	26.1
0-40	1611	27.8	43.1
0-60	2930	50.5	78.5
0-90	3734	64.4	100.0
90-120	1	0.0	0
90-150	1	0.0	0
90-180	1	0.0	0
0-180	3734	64.4	100.0

Lumen Output = 3734 lumens
 Luminaire Efficiency = 64.4%

SPACING CRITERION

ALONG	
1.26	1.40

This space is intentionally left blank.

This space is intentionally left blank.

This space is intentionally left blank.

