



SECURITY

MSE110 SERIES



1X4, Metal Sided Security Luminaire



- 1X4, Metal Sided Security Luminaire
- Welded and Painted After Fabrication
- Full Length Piano Hinge and Captive Tamper Proof Screws
- Nominal .187 High Impact Clear Prismatic Acrylic Lens
- One Way Polyurethane Gasketed
- Suitable for Damp Locations
- Available with:
 - Fluorescent, LED and LED T8 (Internally Driven)
 - Variety of Lens
 - Emergency Battery Pack



Photometric Data and IES Files are Available on www.lalighting.com

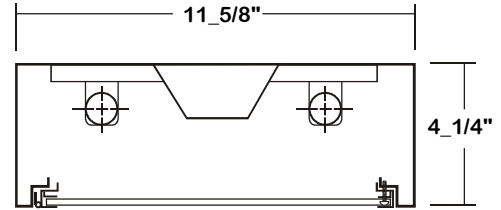


LOS ANGELES LIGHTING MFG. CO.
 10141 OLNEY ST. / EL MONTE, CA 91731
 TEL : 626-454-8300 FAX : 626-454-8399
www.lalighting.com



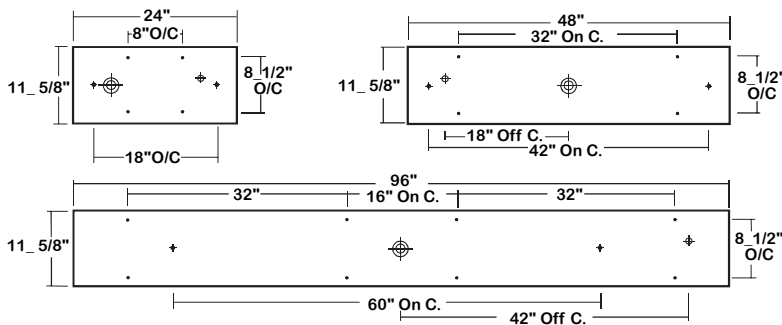
MSE110 SERIES

CROSS SECTION



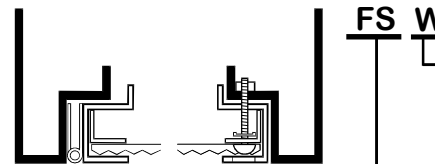
BACK PLATE

- 3/8" K.O. • 11/16" STEM MTG. K.O. • 7/8" OFFSET K.O. • 2" K.O.



DOOR FRAME INFORMATION

CROSS SECTION



FINISHES
W - White Enamel
B - Black Enamel

STYLES
FS - Flat Steel

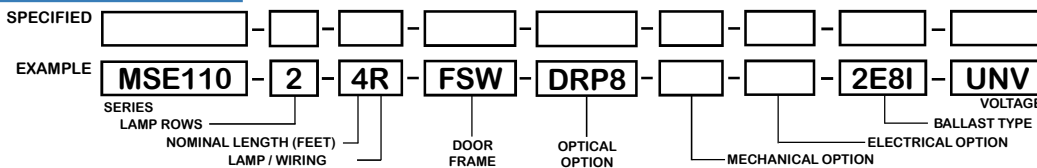
EXPLANATION

1. Continuous Piano Hinge.
2. Two Captive Tamper Proof Screws (Hex Socket With Post).
3. Inner Frame Lens Retainer Rail.

CATALOG NUMBER

NOMINAL LENGTH	TOTAL LAMPS	NOMINAL LENGTH	TOTAL LAMPS	NOMINAL LENGTH	TOTAL LAMPS	NOMINAL LENGTH	TOTAL LAMPS	
MSE110-1-2M	2'	1	MSE110-3-2M	2'	3	MSE110-1-2R	2'	1
MSE110-1-4M	4'	1	MSE110-3-4M	4'	3	MSE110-1-4R	4'	1
MSE110-1-8MT	8'	2	MSE110-3-8MT	8'	6	MSE110-1-8RT	8'	2
MSE110-2-2M	2'	2	MSE110-4-2M	2'	4	MSE110-2-2R	2'	2
MSE110-2-4M	4'	2	MSE110-4-4M	4'	4	MSE110-2-4R	4'	2
MSE110-2-8MT	8'	4	MSE110-4-8MT	8'	8	MSE110-2-8RT	8'	4
						MSE110-3-2R	2'	3
						MSE110-3-4R	4'	3
						MSE110-3-8RT	8'	6
						MSE110-4-2R	2'	4
						MSE110-4-4R	4'	4
						MSE110-4-8RT	8'	8

ORDERING GUIDE



NOTE: LAMP/WIRING*
M= Miniature Bi-Pin T5
R = Medium Bi-Pin T8
MT= Miniature Bi-Pin T5, Tandem Wiring
RT = Medium Bi-Pin T8, Tandem Wiring

OPTIONS AND ACCESSORIES

OPTICAL OPTIONS

- High Impact Clear Prismatic Acrylic .187
- High Impact Clear Prismatic Acrylic .125
- Clear Prismatic Polycarbonate .125
- * Other Lens Available Upon Request

SUFFIX
DRP8
DRP2
PPC2

ELECTRICAL OPTIONS

- Emergency Battery Pack
- External Line Fusing (HLR/GLR)

SUFFIX
BP*
ELF

BALLAST OPTIONS*

- Electronic T5
- Electronic T5HO
- Electronic T8 Instant Start
- Electronic T8 Rapid Start
- Electronic T8HO
- x = Number of Lamps per Ballast

SUFFIX
xE5
xE5H
xE8I
xE8R
xE8H

MECHANICAL OPTIONS

- Gasketing

SUFFIX
GSK*

ACCESSORIES

- Fixture Suspension System

CAT. NO.
*

*Refer to www.lalighting.com/resources for more information

SPECIFICATIONS

- TYPE
- CONSTRUCTION
- FINISH
- DOOR FRAME

Surface mounted, metal sided 12" wide fixture. Design for use in public areas where vandalism is a problem. Die formed 20 gauge. C.R.S. Spot welded seams and corners. Baked white powder coated finish, minimum reflectance 90%, painted after fabrication. 20 gauge cold rolled steel continuous piano hinge and 2 captive tamper proof screws (hex socket with post). Inner frame lens retainer rail.

- GASKET
- OPTICS
- WIRING
- LABELS

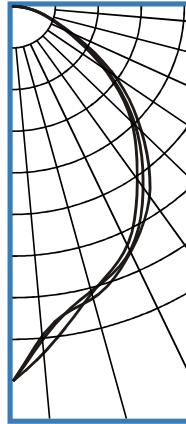
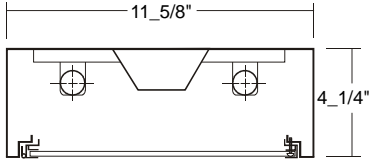
One way polyurethane gasketed standard. More options available. .187 high impact clear prismatic acrylic standard. 120v 60Hz., 277v 60Hz., UNV (universal voltage 120v thru 277v.) or as otherwise specified. U.L. Listed. Suitable for damp locations.



PHOTOMETRIC DATA

MSE110-2-4R-FSW-DRP8-E8

TEST NO.=LA-T0439-1
 LAMP TYPE=FO32T8
 NO. OF LAMP=2
 LUMENS PER LAMP=2900
 WATTS PER LAMP=32
 BALLAST FACTOR=1
 PHOTOMETRY TYPE=C



CANDLEPOWER

ANGLE	END	45	CROSS
0	1576	1576	1576
5	1388	1404	1460
15	1269	1238	1246
25	1136	1131	1105
35	969	922	880
45	737	702	681
55	501	463	447
65	257	248	233
75	126	123	117
85	37	38	34
90	2	4	2
95	0	0	0
105	0	0	0
115	0	0	0
125	0	0	0
135	0	0	0
145	0	0	0
155	0	0	0
165	0	0	0
175	0	0	0
180	0	0	0

ZONAL LUMEN SUMMARY

DEGREES	LUMENS	% LAMP	% FIXTURE
0-30	1011	17.4	34.1
0-40	1591	27.4	53.7
0-60	2558	44.1	86.3
0-90	2963	51.1	100.0
90-120	1	0.0	0
90-150	1	0.0	0
90-180	1	0.0	0
0-180	2964	51.1	100.0

Lumen Output = 2964 lumens
 Luminaire Efficiency = 51.1%

SPACING CRITERION

ALONG	ACROSS
1.00	0.97

This space is intentionally left blank.

This space is intentionally left blank.

This space is intentionally left blank.

