



SECURITY

MSE120 SERIES



2X4, Metal Sided Security Luminaire



- 2X4, Metal Sided Security Luminaire
- Welded and Painted After Fabrication
- Full Length Piano Hinge and Captive Tamper Proof Screws
- Nominal .187 High Impact Clear Prismatic Acrylic Lens
- One Way Polyurethane Gasketed
- Suitable for Damp Locations
- Available with:
 - Fluorescent, LED and LED T8 (Internally Driven)
 - Variety of Lens
 - Emergency Battery Pack



Photometric Data and IES Files are Available on www.lalighting.com



LOS ANGELES LIGHTING MFG. CO.

10141 OLNEY ST. / EL MONTE, CA 91731

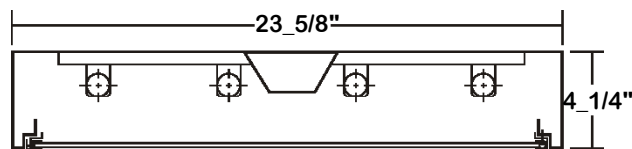
TEL : 626-454-8300 FAX : 626-454-8399

www.lalighting.com



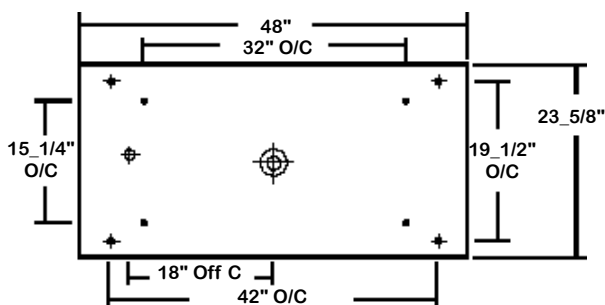
MSE120 SERIES 2x4

CROSS SECTION



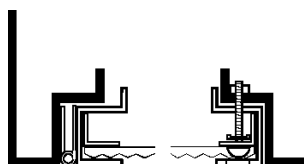
BACK PLATE

- 3/8" K.O. ♦ 11/16" STEM MTG. K.O. ⊕ 7/8" OFFSET K.O. ⊕ 2" K.O.



DOOR FRAME INFORMATION

● CROSS SECTION



● EXPLANATION

1. Continuous Piano Hinge.
2. Two Captive Tamper Proof Screws (Hex Socket With Post).
3. Inner Frame Lens Retainer Rail.

FS W

FINISHES

- W - White Enamel
- B - Black Enamel

STYLES

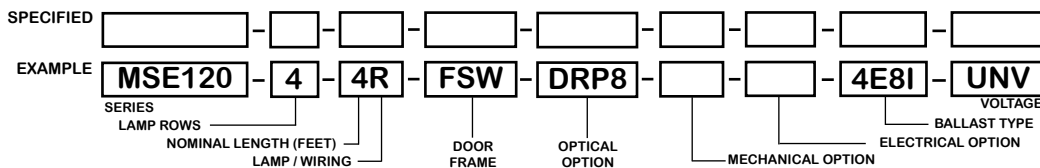
- FS - Flat Steel

CATALOG NUMBER

	NOMINAL WIDTH X LENGTH	TOTAL LAMPS
MSE120-2-2M	2' X 4'	2
MSE120-3-2M	2' X 4'	3
MSE120-4-2M	2' X 4'	4

	NOMINAL WIDTH X LENGTH	TOTAL LAMPS
MSE120-2-2R	2' X 4'	2
MSE120-3-2R	2' X 4'	3
MSE120-4-2R	2' X 4'	4

ORDERING GUIDE



NOTE: LAMP/WIRING*
M = Miniature Bi-Pin T5
R = Medium Bi-Pin T8

OPTIONS AND ACCESSORIES

● OPTICAL OPTIONS

- High Impact Clear Prismatic Acrylic .187
- High Impact Clear Prismatic Acrylic .125
- Clear Prismatic Polycarbonate .125
- * Other Lens Available Upon Request

SUFFIX
DRP8
DRP2
PPC2

● ELECTRICAL OPTIONS

- Emergency Battery Pack
- External Line Fusing (HLR/GLR)

SUFFIX
BP*
ELF

● BALLAST OPTIONS*

- Electronic T5
- Electronic T5HO
- Electronic T8 Instant Start
- Electronic T8 Rapid Start
- Electronic T8HO
- x = Number of Lamps per Ballast

SUFFIX
xE5
xE5H
xE8I
xE8R
xE8H

● MECHANICAL OPTIONS

- Gasketing

SUFFIX
GSK*

● ACCESSORIES

- Fixture Suspension System

CAT. NO.

*Refer to www.lalighting.com/resources for more information

SPECIFICATIONS

- TYPE
- CONSTRUCTION
- FINISH
- DOOR FRAME
- GASKET
- OPTICS
- WIRING
- LABELS

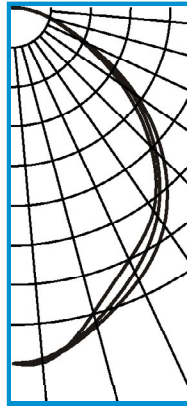
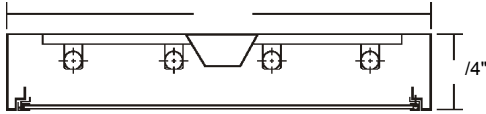
Surface mounted, metal sided 24" wide fixture. Design for use in public areas where vandalism is a problem.
Die formed 20 gauge. C.R.S. Spot welded seams and corners.
Baked white powder coated finish, minimum reflectance 90%, painted after fabrication.
20 gauge cold rolled steel continuous piano hinge and 2 captive tamper proof screws (hex socket with post). Inner frame lens retainer rail.
One way polyurethane gasketed standard. More options available.
.187 high impact clear prismatic acrylic standard.
120v 60Hz., 277v 60Hz., UNV (universal voltage 120v thru 277v.) or as otherwise specified.
U.L. Listed. Suitable for damp locations.



PHOTOMETRIC DATA

MSE120-4-4R-FSW-DRP8-E8

TEST NO.=LA-T0457-1
 LAMP TYPE=FO32T8
 NO. OF LAMP=4
 LUMENS PER LAMP=2900
 WATTS PER LAMP=32
 BALLAST FACTOR=1
 PHOTOMETRY TYPE=C



CANDLEPOWER

ANGLE	END	45	CROSS
0	2937	2937	2937
5	2940	2907	2917
15	2597	2675	2710
25	2286	2394	2470
35	2028	2085	2179
45	1607	1664	1756
55	1094	1179	1233
65	612	652	664
75	312	323	321
85	95	99	100
90	9	8	12
95	0	0	0
105	0	0	0
115	0	0	0
125	0	0	0
135	0	0	0
145	0	0	0
155	0	0	0
165	0	0	0
175	0	0	0
180	0	0	0

ZONAL LUMEN SUMMARY

DEGREES	LUMENS	% LAMP	% FIXTURE
0-30	2138	18.4	31.2
0-40	3454	29.8	50.3
0-60	5800	50.0	84.5
0-90	6861	59.1	100.0
90-120	2	0.0	0
90-150	2	0.0	0
90-180	2	0.0	0
0-180	6863	59.2	100.0

Lumen Output = 6863 lumens
 Luminaire Efficiency = 59.2%

SPACING CRITERION

ALONG	ACROSS
1.10	1.18

This space is intentionally left blank.

This space is intentionally left blank.

This space is intentionally left blank.

