



OPEN COMMERCIAL

STR100 SERIES



One-Light Strip Luminaire



- One-Light Strip Luminaire
- 22 Ga. Cold Rolled Steel Housing
- Baked White Polyester Finish
- Screw-On End Caps
- End Plates May be Used as Channel Couplings
- Cover Secured by Two Quarter Turn Fasteners
- Suitable for Damp Locations
- Available with:
 - Fluorescent, LED and LED T8 (Internally Driven)
 - Asymmetrical or Symmetrical Reflectors
 - Emergency Battery Pack
 - Switch
 - 14 ga. Wire Guard



Photometric Data and IES Files are Available on www.lalighting.com



LOS ANGELES LIGHTING MFG. CO.

10141 OLNEY ST. / EL MONTE, CA 91731

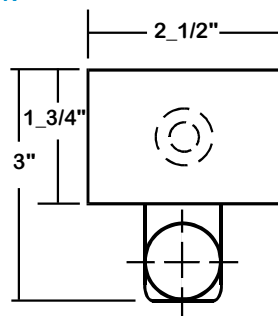
TEL : 626-454-8300 FAX : 626-454-8399

www.lalighting.com



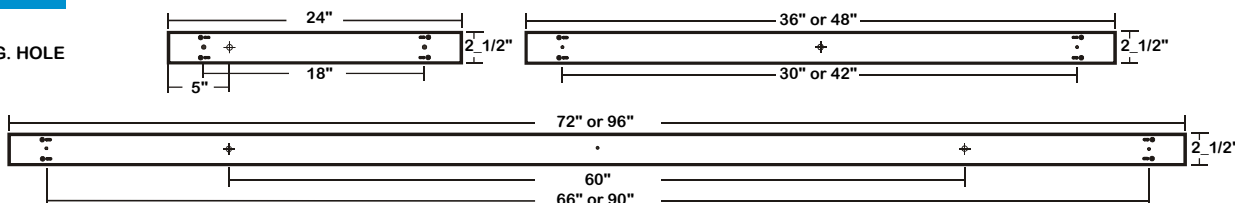
STR100 SERIES

CROSS SECTION



BACK PLATE

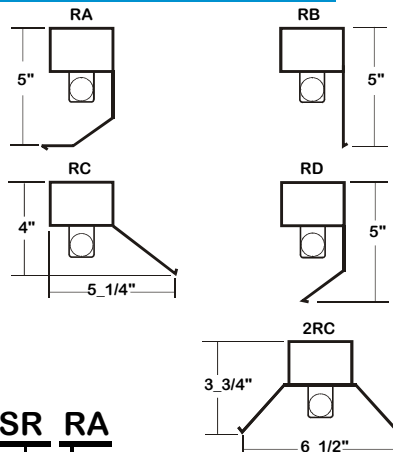
- V-HOOK
- 3/16" MTG. HOLE
- 7/8" K.O.



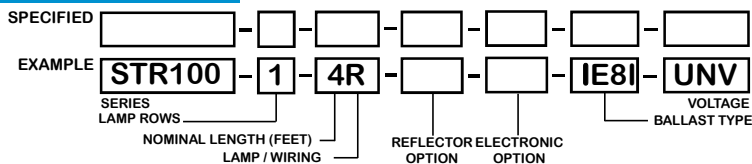
CATALOG NUMBER

	NOMINAL LENGTH	TOTAL LAMPS		NOMINAL LENGTH	TOTAL LAMPS
STR100-1-2M	2'	1	STR100-1-2S	2'	1
STR100-1-3M	3'	1	STR100-1-3S	3'	1
STR100-1-4M	4'	1	STR100-1-4S	4'	1
STR100-1-6MT	6'	2	STR100-1-6S	6'	1
STR100-1-8MT	8'	2	STR100-1-8S	8'	1
STR100-1-2R	2'	1	STR100-1-4H	4'	1
STR100-1-3R	3'	1	STR100-1-6H	6'	1
STR100-1-4R	4'	1	STR100-1-8H	8'	1
STR100-1-6RT	6'	2			
STR100-1-8RT	8'	2	*		

REFLECTOR INFORMATION



ORDERING GUIDE



NOTE: LAMP/WIRING* M = Miniature Bi-Pin T5 MT = Miniature Bi-Pin T5, Tandem Wiring
 R = Medium Bi-Pin T8 RT = Medium Bi-Pin T8, Tandem Wiring
 S = Slimline
 H = High Output (800MA)

SR RA

STYLE

- RA - 3-Bend asymmetrical Reflector
- RB - 90° 1-Bend asymmetrical Reflector
- RC - 45° 1-Bend asymmetrical Reflector
- RD - 2-Bend asymmetrical Reflector
- 2RC - 45° symmetrical Reflector

MATERIAL

Leave blank for white steel
 SR - Specular aluminum (95%)

OPTIONS AND ACCESSORIES

ELECTRICAL OPTIONS

- Emergency Battery Pack
- External Line Fusing (HLR/GLR)
- Plug-In Branch Wiring Connector System
- Switch

SUFFIX

- BP*
- ELF
- PIW*
- *

BALLAST OPTIONS*

- Electronic T5
- Electronic T5HO
- Electronic T8 Instant Start
- Electronic T8 Rapid Start
- Electronic T8HO

SUFFIX

- xE5
- xE5H
- xE8I
- xE8R
- xE8H

ACCESSORIES

- Wire Guard - 14 Ga.
- 4" Leg Height V-Hook
- Fixture Suspension System

CAT. NO.

- WG14-STR100
- V4
- *

*Refer to www.lalighting.com/resources for more information

x = Number of Lamps per Ballast

SPECIFICATIONS

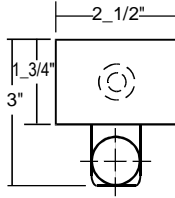
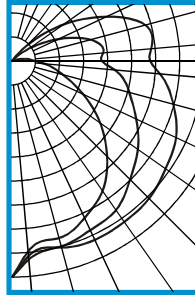
- **TYPE** Open lamp one-light channel.
- **CONSTRUCTION** 22 ga. cold rolled steel housing. (20 ga. housing available as specified.) End plates are fastened to housing by sheet metal screws to assure rigidity. End plates may be used as channel couplings.
- **FINISH** Baked white polyester finish standard, minimum reflectance 86%. (Powder coated finish available)
- **WIRE GUARD** Chrome epoxy powder coated.
- **WIRING** 120v 60Hz., 277v 60Hz., UNV (universal voltage 120v thru 277v.) or as otherwise specified.
- **LABELS** U.L. Listed. Suitable for dry locations only.



PHOTOMETRIC DATA

STR100-1-4R-E8

TEST NO.=LA-T0273
 LAMP TYPE=F032T8
 NO. OF LAMP=1
 LUMENS PER LAMP=2900
 WATTS PER LAMP=32
 BALLAST FACTOR=1
 PHOTOMETRY TYPE=C



CANDLEPOWER

ANGLE	END	45	CROSS
0	512	512	512
5	451	470	462
15	434	454	458
25	409	441	467
35	374	430	464
45	318	395	459
55	254	363	444
65	185	324	428
75	123	287	395
85	78	244	351
90	52	211	326
95	42	216	330
105	14	193	327
115	1	123	248
125	0	56	153
135	0	12	61
145	0	0	4
155	0	0	0
165	0	0	0
175	0	0	0
180	0	0	0

ZONAL LUMEN SUMMARY

DEGREES	LUMENS	% LAMP	% FIXTURE
0-30	375	12.9	13.8
0-40	642	22.1	23.6
0-60	1265	43.6	46.5
0-90	2109	72.7	77.5
90-120	534	18.4	19.6
90-150	611	21.1	22.5
90-180	611	21.1	22.5
0-180	2719	93.8	100.0

Lumen Output = 2719 lumens
 Luminaire Efficiency = 93.8%

SPACING CRITERION

ALONG	ACROSS
1.14	1.39

