

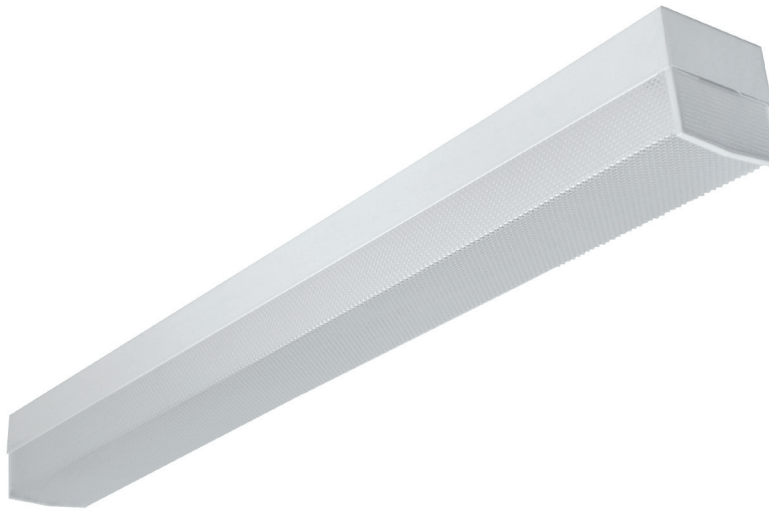


WRAPAROUND

WCP100 SERIES



Square Metal Sided Wrap Luminaire



- One Lamp Square Metal Sided Wrap
- Powder Coated Finish / Painted After Fabrication
- Lens Secured By Spring Loaded Scissors Clips
- Pendant Mountable
- Suitable for Damp Locations
- Available with:
 - Fluorescent, LED and LED T8 (Internally Driven)
 - Variety of Lenses
 - Tamper Proof Screws
 - Emergency Battery Pack



Photometric Data and IES Files are Available on www.lalighting.com

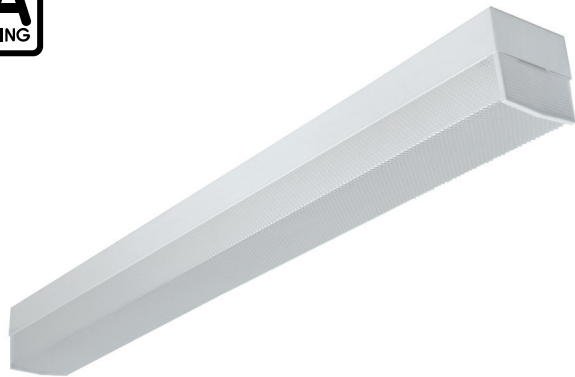


LOS ANGELES LIGHTING MFG. CO.

10141 OLNEY ST. / EL MONTE, CA 91731

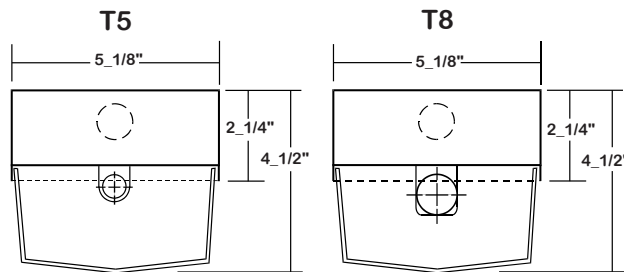
TEL : 626-454-8300 FAX : 626-454-8399

www.lalighting.com



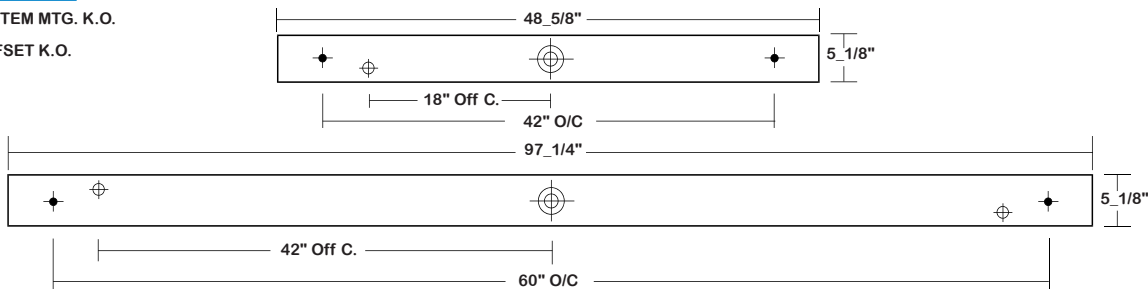
WCP100 SERIES

CROSS SECTION



BACK PLATE

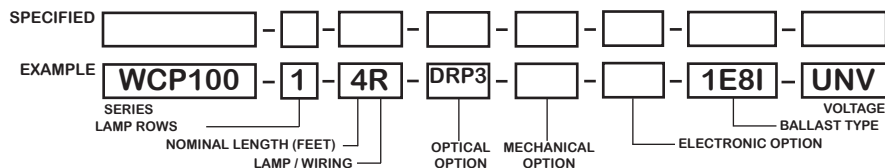
- ◆ 11/16" STEM MTG. K.O.
- ⊕ 7/8" OFFSET K.O.
- ⊕ 2" K.O.



CATALOG NUMBER

	NOMINAL LENGTH	TOTAL LAMPS
WCP100-1-4R	4'	1
WCP100-1-8RT	8'	2

ORDERING GUIDE



NOTE: LAMP/WIRING*
 M= Miniature Bi-Pin T5
 R = Medium Bi-Pin T8
 MT= Miniature Bi-Pin T5, Tandem Wiring
 RT = Medium Bi-Pin T8, Tandem Wiring

OPTIONS AND ACCESSORIES

<ul style="list-style-type: none"> ● OPTICAL OPTIONS High Impact Clear Prismatic Acrylic 	SUFFIX DRP3	<ul style="list-style-type: none"> ● ELECTRICAL OPTIONS Emergency Battery Pack External Line Fusing (HLR/GLR) 	SUFFIX BP* ELF	<ul style="list-style-type: none"> ● BALLAST OPTIONS* Electronic T5 Electronic T5HO Electronic T8 Instant Start Electronic T8 Rapid Start Electronic T8HO x = Number of Lamps per Ballast 	SUFFIX xE5 xE5H xE8I xE8R xE8H
<ul style="list-style-type: none"> ● MECHANICAL OPTIONS Wet Location (Electro Galvanized Steel Housing) Tamper Proof Screws 	SUFFIX WL TP			<ul style="list-style-type: none"> ● ACCESSORIES Fixture Suspension System 	CAT. NO. *

*Refer to www.lalighting.com/resources for more information

SPECIFICATIONS

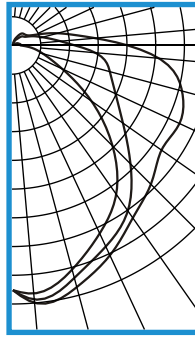
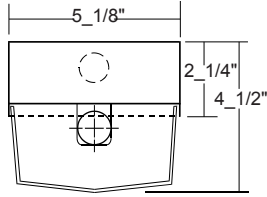
- **TYPE** Surface mounted wrap around square housing. Finger actuated, spring-loaded stamped steel hinge & latch catch located on each lens end plate. Opens from either side for easy relamping.
- **CONSTRUCTION** 22 ga. cold rolled steel welded housing.
- **OPTICS** Flat white acrylic and clear prismatic acrylic lenses are available.
- **FINISH** Baked white powder coated finish, minimum reflectance 90%, painted after fabrication.
- **WIRING** 120v 60Hz., 277v 60Hz., UNV (universal voltage 120v thru 277v.) or as otherwise specified.
- **LABELS** U.L. Listed. Suitable for damp locations.



PHOTOMETRIC DATA

WCP100-1-4R-PA-E8

TEST NO.=LA-T0247
 LAMP TYPE=F032T8
 NO. OF LAMP=1
 LUMENS PER LAMP=2900
 WATTS PER LAMP=32
 BALLAST FACTOR=1
 PHOTOMETRY TYPE=C



CANDLEPOWER

ANGLE	END	45	CROSS
0	531	531	531
5	540	553	561
15	502	521	541
25	448	480	501
35	391	436	455
45	305	360	424
55	206	291	394
65	116	245	399
75	67	218	380
85	34	179	318
90	17	135	249
95	17	104	180
105	14	68	102
115	11	47	55
125	7	33	38
135	6	28	35
145	4	18	31
155	2	13	20
165	0	6	11
175	0	2	1
180	0	0	0

ZONAL LUMEN SUMMARY

DEGREES	LUMENS	% LAMP	% FIXTURE
0-30	421	14.5	19.2
0-40	691	23.8	31.6
0-60	1237	42.6	56.5
0-90	1901	65.6	86.8
90-120	226	7.8	10.3
90-150	281	9.7	12.8
90-180	288	9.9	13.2
0-180	2189	75.5	100.0

Lumen Output = 2189 lumens
 Luminaire Efficiency = 75.5%

SPACING CRITERION

ALONG	ACROSS
1.18	1.33

This space is intentionally left blank.

This space is intentionally left blank.

This space is intentionally left blank.

