

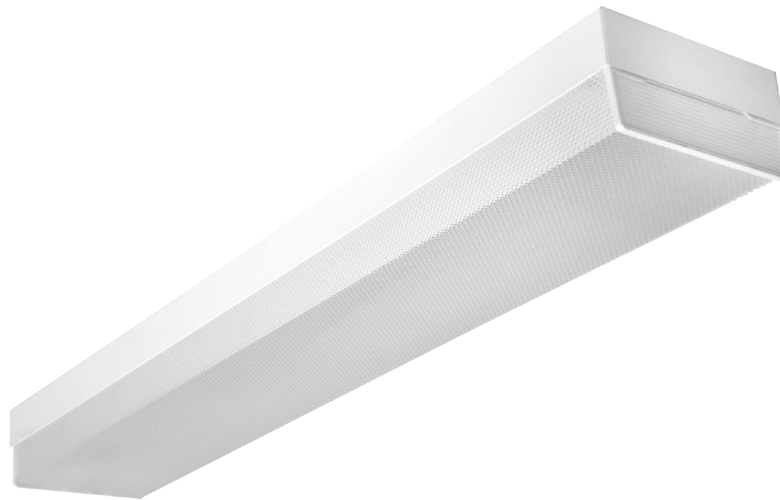


WRAPAROUND

WCP200 SERIES



Square Metal Sided Wrap Luminaire



- 2 or 3 Lamp Square Metal Sided Wrap
- Powder Coated Finish / Painted After Fabrication
- Lens Secured By Spring Loaded Scissors Clips
- Pendant Mountable
- Suitable for Damp Locations
- Available with:
 - Fluorescent, LED and LED T8 (Internally Driven)
 - Variety of Lenses
 - Tamper Proof Screws
 - Emergency Battery Pack

Photometric Data and IES Files are Available on www.lalighting.com



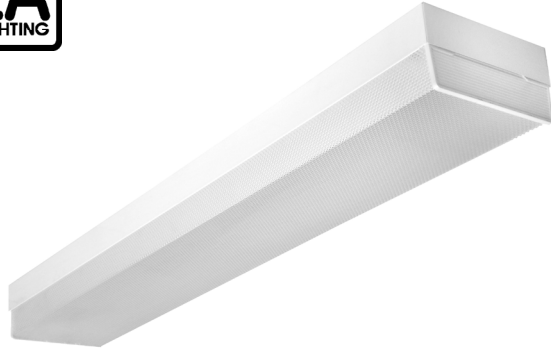
LOS ANGELES LIGHTING MFG. CO.

10141 OLNEY ST. / EL MONTE, CA 91731

TEL : 626-454-8300 FAX : 626-454-8399

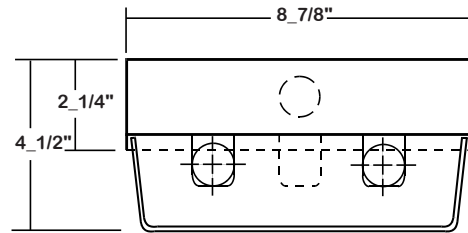
www.lalighting.com

WRAPAROUND - LED T8 (Internally Driven)



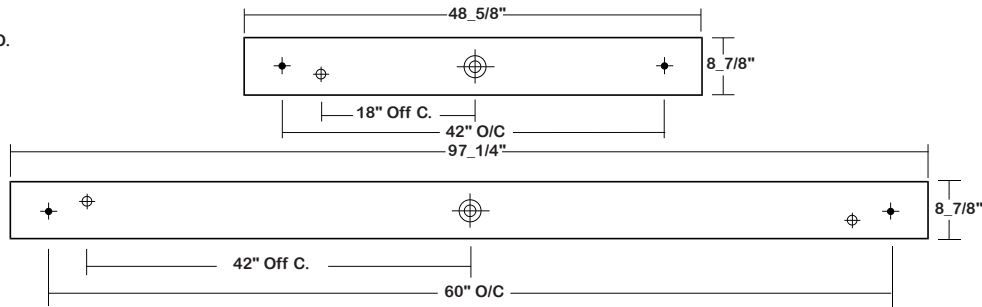
WCP200 SERIES - LED T8

CROSS SECTION



BACK PLATE

- ◆ 11/16" STEM MTG. K.O.
- ⊕ 7/8" OFFSET K.O.
- ⊕ 2" K.O.



CATALOG NUMBER

CATALOG NUMBER	NOMINAL LENGTH	TOTAL MODULES
WCP200-2-4R	4'	2
WCP200-2-8RT	8'	4
WCP200-3-4R	4'	3
WCP200-3-8RT	8'	6

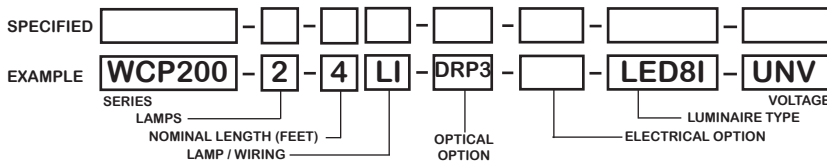
TS2 - LED Luminaire

On/Off Safety Switch



- Easily accessible on exterior of wire way.
- Allows individual fixture to be switched ON/OFF during re-lamping or Maintenance.
- Prevents damage to lamp and electrical shock during lamping and re-lamping.
- Allows safe entry to wire way channel where power connector can be disconnected for maintenance to fixture.

ORDERING GUIDE



LAMP / WIRING

LI = LED T8 internal driver light tube.
Both ends powered.
Shunted sockets used.



LR = LED T8 internal driver light tube.
Single end powered.
Non-shunted sockets used.



OPTIONS AND ACCESSORIES

<ul style="list-style-type: none"> ● OPTICAL OPTIONS High Impact Clear Prismatic Acrylic 	<p>SUFFIX DRP2</p>	<ul style="list-style-type: none"> ● ELECTRICAL OPTIONS LED Luminaire ON/OFF Safety Switch 	<p>SUFFIX TS2</p>
<ul style="list-style-type: none"> ● ACCESSORIES Fixture Suspension System 		<p>SUFFIX CAT. NO.</p>	<p>*</p>

*See appropriate reference page

SPECIFICATIONS

** Lamp(s) by others.

- **TYPE** Surface mounted wrap around square housing. Finger actuated, spring-loaded stamped steel hinge & latch catch located on each lens end plate. Opens from either side for easy relamping.
- **CONSTRUCTION** 22 ga. cold rolled steel welded housing.
- **OPTICS** Flat white acrylic and clear prismatic acrylic lenses are available.
- **FINISH** Baked white powder coated finish, minimum reflectance 90%, painted after fabrication.
- **WIRING** Operate LED T8 internally driven light tube(s)**.
- **LABELS** Suitable for damp locations.

