

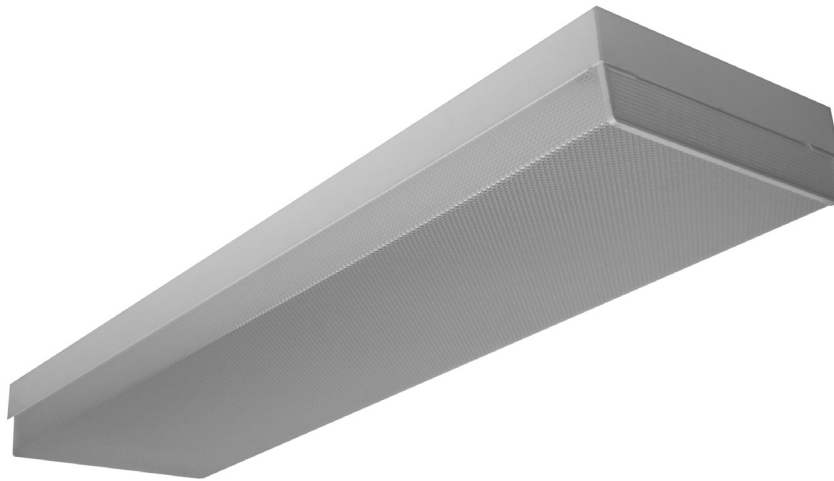


# WRAPAROUND

## WCP300 SERIES



### Square Metal Sided Wrap Luminaire



- 2, 3 or 4 Lamp Square Metal Sided Wrap
- Powder Coated Finish / Painted After Fabrication
- Lens Secured By Spring Loaded Scissors Clips
- Pendant Mountable
- Suitable for Damp Locations
- Available with:
  - Fluorescent, LED and LED T8 (Internally Driven)
  - Variety of Lenses
  - Tamper Proof Screws
  - Emergency Battery Pack



Photometric Data and IES Files are Available on [www.lalighting.com](http://www.lalighting.com)



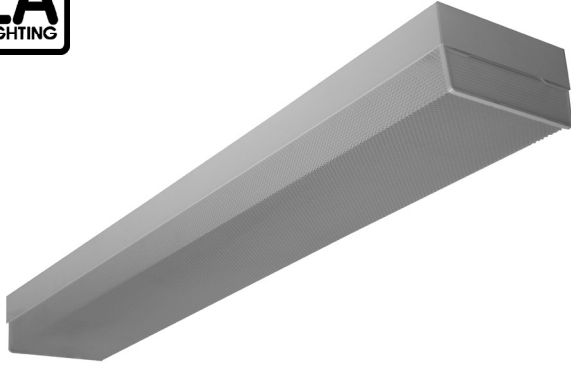
**LOS ANGELES LIGHTING MFG. CO.**

10141 OLNEY ST. / EL MONTE, CA 91731

TEL : 626-454-8300 FAX : 626-454-8399

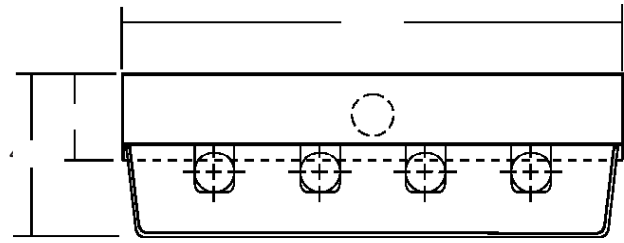
[www.lalighting.com](http://www.lalighting.com)

**WRAPAROUND - LED T8 (Internally Driven)**



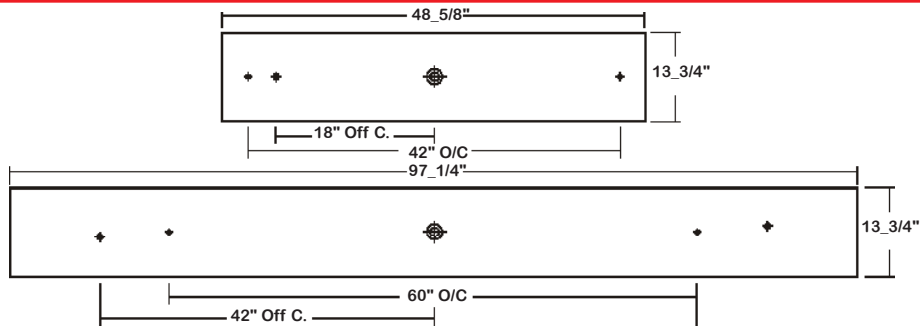
**WCP300 SERIES - LED T8**

**CROSS SECTION**



**BACK PLATE**

- ◆ 11/16" STEM MTG. K.O.
- ⊕ 7/8" OFFSET K.O.
- ⊕ 2" K.O.



**CATALOG NUMBER**

CATALOG NUMBER	NOMINAL LENGTH	TOTAL MODULES
WCP300-3-4R	4'	3
WCP300-3-8RT	8'	6
WCP300-4-4R	4'	4
WCP300-4-8RT	8'	8

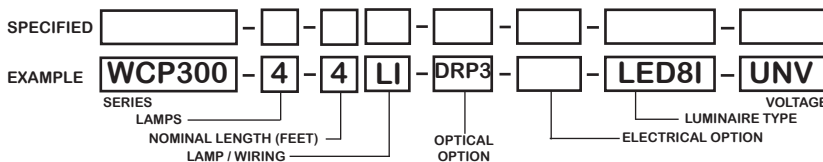
**TS2 - LED Luminaire**

**On/Off Safety Switch**



- Easily accessible on exterior of wire way.
- Allows individual fixture to be switched ON/OFF during re-lamping or Maintenance.
- Prevents damage to lamp and electrical shock during lamping and re-lamping.
- Allows safe entry to wire way channel where power connector can be disconnected for maintenance to fixture.

**ORDERING GUIDE**



**LAMP / WIRING**

**LI = LED T8 internal driver light tube.**  
Both ends powered.  
Shunted sockets used.



**LR = LED T8 internal driver light tube.**  
Single end powered.  
Non-shunted sockets used.



**OPTIONS AND ACCESSORIES**

● **OPTICAL OPTIONS**  
High Impact Clear Prismatic Acrylic

SUFFIX  
DRP2

● **ELECTRICAL OPTIONS**  
LED Luminaire ON/OFF Safety Switch

SUFFIX  
TS2

● **ACCESSORIES**  
Fixture Suspension System

CAT. NO.  
\*

\*See appropriate reference page

**SPECIFICATIONS**

\*\* Lamp(s) by others.

- **TYPE** Surface mounted wrap around square housing. Finger actuated, spring-loaded stamped steel hinge & latch catch located on each lens end plate. Opens from either side for easy relamping.
- **CONSTRUCTION** 22 ga. cold rolled steel welded housing.
- **OPTICS** Flat white acrylic and clear prismatic acrylic lenses are available.
- **FINISH** Baked white powder coated finish, minimum reflectance 90%, painted after fabrication.
- **WIRING** Operate LED T8 internally driven light tube(s)\*\*.
- **LABELS** Suitable for damp locations.

