



SECURITY

WSE100 SERIES



Security Wraparound Luminaire



- Security Wraparound Luminaire
- 20 Ga. Cold Rolled Steel Housing
- Welded and Painted After Fabrication
- Captive Tamper Proof Screws
- Suitable for Damp Locations
- Available with:
 - Fluorescent, LED and LED T8 (Internally Driven)
 - Variety of Lenses
 - Emergency Battery Pack



Photometric Data and IES Files are Available on www.lalighting.com



LOS ANGELES LIGHTING MFG. CO.

10141 OLNEY ST. / EL MONTE, CA 91731

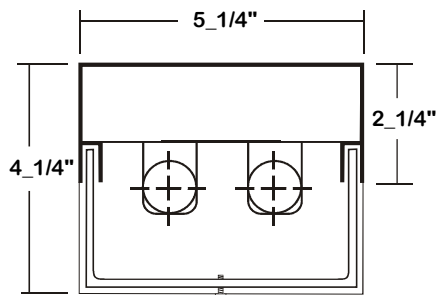
TEL : 626-454-8300 FAX : 626-454-8399

www.lalighting.com



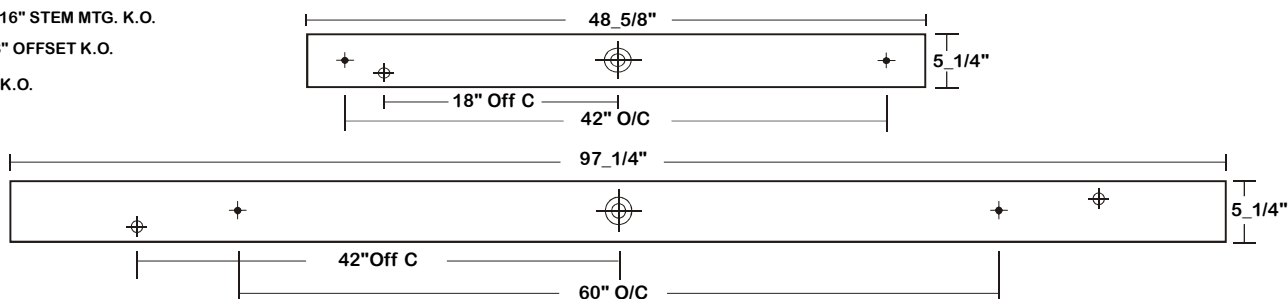
WSE100 SERIES

CROSS SECTION



BACK PLATE

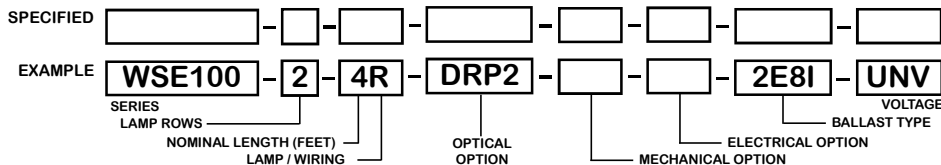
- ◆ 11/16" STEM MTG. K.O.
- ◆ 7/8" OFFSET K.O.
- ◆ 2" K.O.



CATALOG NUMBER

	NOMINAL LENGTH	TOTAL LAMPS		NOMINAL LENGTH	TOTAL LAMPS
WSE100-1-4M	4'	1	WSE100-1-4R	4'	1
WSE100-1-8MT	8'	2	WSE100-1-8RT	8'	2
WSE100-2-4M	4'	2	WSE100-2-4R	4'	2
WSE100-2-8MT	8'	4	WSE100-2-8RT	8'	4

ORDERING GUIDE



NOTE: LAMP/WIR- M=Miniature Bi-Pin T5 R=Medium Bi-Pin T8
OPTICAL OPTION DRP2=Miniature Bi-Pin T5, Rapid Start; PPC2=Miniature Bi-Pin T5, Preheat; DRP2=Medium Bi-Pin T8, Rapid Start; PPC2=Medium Bi-Pin T8, Preheat
ELECTRICAL OPTION BP*=Emergency Battery Pack; ELF=External Line Fusing (HLR/GLR)

OPTIONS AND ACCESSORIES

OPTICAL OPTIONS

- High Impact Clear Prismatic Acrylic .125
- Clear Prismatic Polycarbonate .125
- * Other Lens Available Upon Request

SUFFIX
DRP2
PPC2

ELECTRICAL OPTIONS

- Emergency Battery Pack
- External Line Fusing (HLR/GLR)

SUFFIX
BP*
ELF

BALLAST OPTIONS*

- Electronic T5
- Electronic T5HO
- Electronic T8 Instant Start
- Electronic T8 Rapid Start
- Electronic T8HO

x = Number of Lamps per Ballast

SUFFIX
xE5
xE5H
xE8I
xE8R
xE8H

ACCESSORIES

- Fixture Suspension System

CAT. NO.
*

*Refer to www.lalighting.com/resources for more information

SPECIFICATIONS

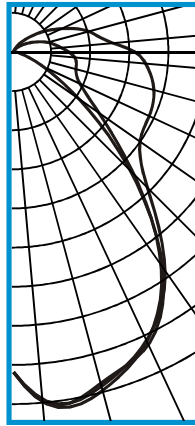
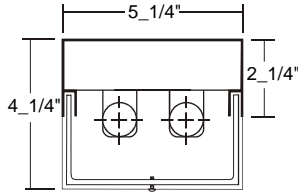
- **TYPE** Wraparound designed for minimum security applications.
- **CONSTRUCTION** Die formed 20 gauge. C.R.S. Spot welded seams and corners.
- **FINISH** Baked white powder coated finish, minimum reflectance 90%, painted after fabrication.
- **OPTICS** High impact clear prismatic acrylic, .125 thickness. Lens secured by 2 tamper resistant screws (Hex socket with post).
- **WIRING** 120v 60Hz., 277v 60Hz., UNV (universal voltage 120v thru 277v.) or as otherwise specified.
- **LABELS** U.L. Listed. Suitable for damp locations.



PHOTOMETRIC DATA

WSE100-2-4R-DRP2-E8

TEST NO.=LA-T0496
 LAMP TYPE=F032T8
 NO. OF LAMP=2
 LUMENS PER LAMP=2900
 WATTS PER LAMP=32
 BALLAST FACTOR=1
 PHOTOMETRY TYPE=C



CANDLEPOWER

ANGLE	END	45	CROSS
0	1307	1307	1307
5	1435	1437	1426
15	1395	1426	1409
25	1311	1296	1293
35	1057	1047	1077
45	658	682	768
55	307	418	631
65	117	296	612
75	38	264	593
85	12	250	541
90	7	225	495
95	7	196	409
105	5	148	320
115	4	96	225
125	4	56	143
135	2	31	78
145	1	16	39
155	0	6	15
165	0	1	3
175	0	0	0
180	0	0	0

ZONAL LUMEN SUMMARY

DEGREES	LUMENS	% LAMP	% FIXTURE
0-30	1138	19.6	26.8
0-40	1802	31.1	42.4
0-60	2740	47.2	64.4
0-90	3655	63.0	85.9
90-120	499	8.6	11.7
90-150	596	10.3	14.0
90-180	600	10.3	14.1
0-180	4254	73.4	100.0

Lumen Output = 4254 lumens
 Luminaire Efficiency = 73.4%

SPACING CRITERION

ALONG	ACROSS
1.30	1.30

This space is intentionally left blank.

This space is intentionally left blank.

This space is intentionally left blank.

