

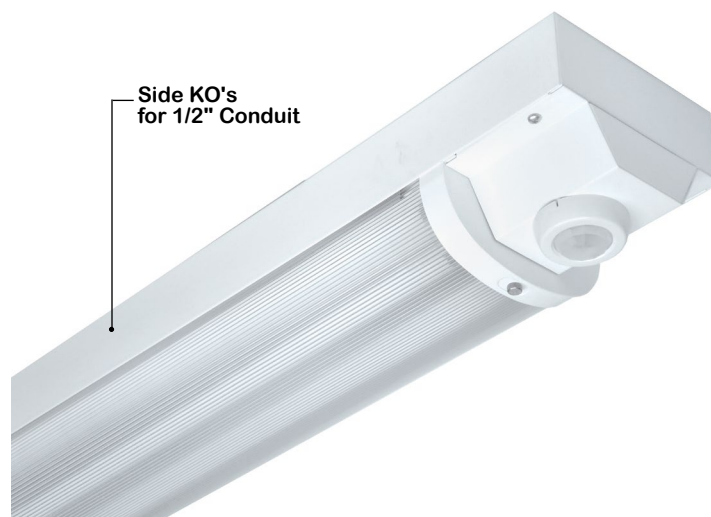


WRAPAROUND

WSE201 SERIES



Sensor Controlled Parking Structure



- Sensor Controlled Parking Structure Luminaire
- Wide Range Infrared Occupancy Sensor Standard, 50' Diameter Coverage / 8' Mtg. Height, Integral light Level daylighting Feature From 10-120 fc.
- Side KO's For 1/2" Conduit
- 22 ga. Cold Rolled Steel Housing With 18 ga. End Plates
- Welded And Painted After Fabrication
- 25% DR High Impact Frosted Acrylic Lens
- Lens Secured By Stainless Steel Knurled Head Screws
- Fully Neoprene Gasketed
- Suitable for Damp Locations
- Available with:
 - Fluorescent, LED and LED T8 (Internally Driven)
 - 95% Enhanced Specular Aluminum Reflectors
 - Tamper Proof Screws / Phillips Head Screws
 - Emergency Battery Pack



Photometric Data and IES Files are Available on www.lalighting.com



LOS ANGELES LIGHTING MFG. CO.

10141 OLNEY ST. / EL MONTE, CA 91731

TEL : 626-454-8300 FAX : 626-454-8399

www.lalighting.com

WALL BRACKET - Fluorescent

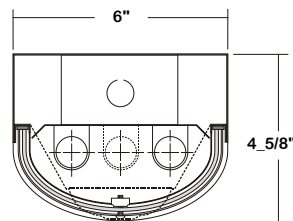
LED Equivalent Products Available on www.lalighting.com



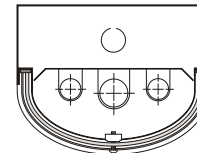
Side KO's for 1/2" Conduit

WSE201 SERIES

CROSS SECTION

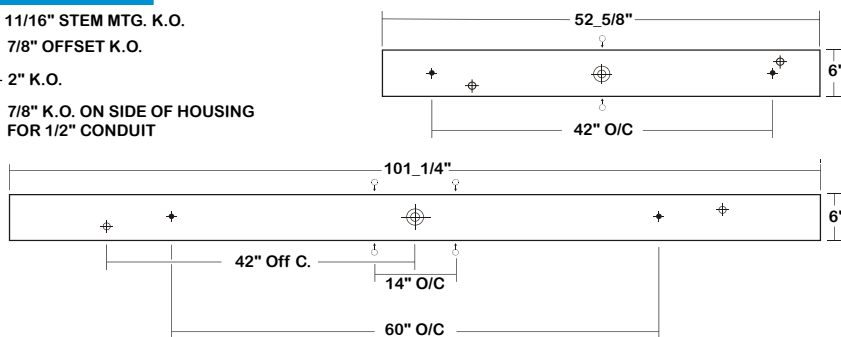


Note:
Fixture with multi lamp type available, consult factory for ordering detail.
Example:
2-Lamp T5HO + 1-Lamp T8



BACK PLATE

- ◆ 11/16" STEM MTG. K.O.
- ⊕ 7/8" OFFSET K.O.
- ⊕ 2" K.O.
- 7/8" K.O. ON SIDE OF HOUSING FOR 1/2" CONDUIT



SENSOR CONFIGURATION

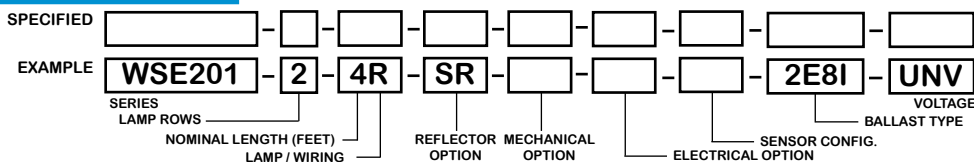
MS 2 A

- A- ON / OFF
 - B- Step Dimming
 - 1- Middle Lamp
 - 2- Outside Lamps
 - 3- All Lamps
 - 4- Other
- Motion Sensor

CATALOG NUMBER

	NOMINAL LENGTH	TOTAL LAMPS		NOMINAL LENGTH	TOTAL LAMPS
WSE201-1-4M	4'	1	WSE201-1-4R	4'	1
WSE201-1-8MT	8'	2	WSE201-1-8RT	8'	2
WSE201-2-4M	4'	2	WSE201-2-4R	4'	2
WSE201-2-8MT	8'	4	WSE201-2-8RT	8'	4
WSE201-3-4M	4'	3	WSE201-3-4R	4'	3
WSE201-3-8MT	8'	6	WSE201-3-8RT	8'	6

ORDERING GUIDE



NOTE: LAMP/WIRING*
M= Miniature Bi-Pin T5
MT= Miniature Bi-Pin T5 Tandem Wiring
R= Medium Bi-Pin T8
RT= Medium Bi-Pin T8 Tandem Wiring

OPTIONS AND ACCESSORIES

REFLECTOR OPTIONS

- Specular Aluminum Reflector (95%)
- White Reflector

SUFFIX
SR
WR

MECHANICAL OPTIONS

- Tamper Proof Screws (Hex Socket with Post)
- Phillips Head Screw

SUFFIX
TP
PH

ELECTRICAL OPTIONS

- Emergency Battery Pack
- External Line Fusing (HLR/GLR)

SUFFIX
BP*
ELF

BALLAST OPTIONS*

- Electronic T5
 - Electronic T5HO
 - Electronic T8 Instant Start
 - Electronic T8 Rapid Start
 - Electronic T8HO
- x = Number of Lamps per Ballast

SUFFIX
xE5
xE5H
xE8I
xE8R
xE8H

ACCESSORIES

- Fixture Suspension System

CAT.NO.
*

*Refer to www.lalighting.com/resources for more information

SPECIFICATIONS

- TYPE
- CONSTRUCTION
- FINISH
- REFLECTOR
- OPTICS
- SENSOR
- WIRING
- LABELS

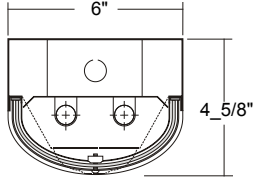
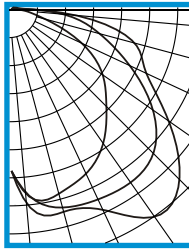
1, 2 or 3 lamps sensor controlled parking structure luminaire.
22 ga. die formed cold rolled steel housing with 18ga. end plates, spot welded seams and corners.
Baked white powder coated finish, minimum reflectance 90%, painted after fabrication.
White reflector standard, (95% reflectance specular aluminum reflector available).
25% DR high impact linear pattern frosted acrylic lens, neoprene gasketed. Lens secured by steel lens-retainers and 2 stainless steel knurled head thumb screws. Phillips head screws and temper proof screws available.
Wide range infrared occupancy sensor, 8' mounting height, 50' diameter coverage standard. Integral light level day lighting feature from 10-120fc. Other sensor available.
120v 60Hz., 277v 60Hz., UNV (universal voltage 120v thru 277v.) or as otherwise specified.
U.L. Listed. Suitable for damp locations.



PHOTOMETRIC DATA

WSE201-2-4M-SR-E5H

TEST NO.=LA-T1922
 LAMP TYPE=F54T5HO
 NO. OF LAMP=2
 LUMENS PER LAMP=5000
 WATTS PER LAMP=54
 BALLAST FACTOR=1
 PHOTOMETRY TYPE=C



CANDLEPOWER

ANGLE	END	45	CROSS
0	1579	1579	1579
5	1826	1814	1928
15	1855	2005	2043
25	1757	2043	2167
35	1574	2055	2470
45	1313	1970	2326
55	1083	1683	1868
65	737	1265	1452
75	314	883	1240
85	127	497	617
90	54	227	217
95	23	93	97
105	8	45	61
115	6	34	44
125	1	24	33
135	0	13	29
145	0	7	14
155	0	1	4
165	0	0	0
175	0	0	0
180	0	0	0

ZONAL LUMEN SUMMARY

DEGREES	LUMENS	% LAMP	% FIXTURE
0-30	1662	16.6	19.6
0-40	2942	29.4	34.6
0-60	5827	58.3	68.6
0-90	8280	82.8	97.4
90-120	184	1.8	2.2
90-150	217	2.2	2.6
90-180	217	2.2	2.6
0-180	8498	85.0	100.0

Lumen Output = 8498lumens
 Luminaire Efficiency = 85.0%

SPACING CRITERION

ALONG	ACROSS
1.48	2.04

This space is intentionally left blank.

This space is intentionally left blank.

This space is intentionally left blank.

