



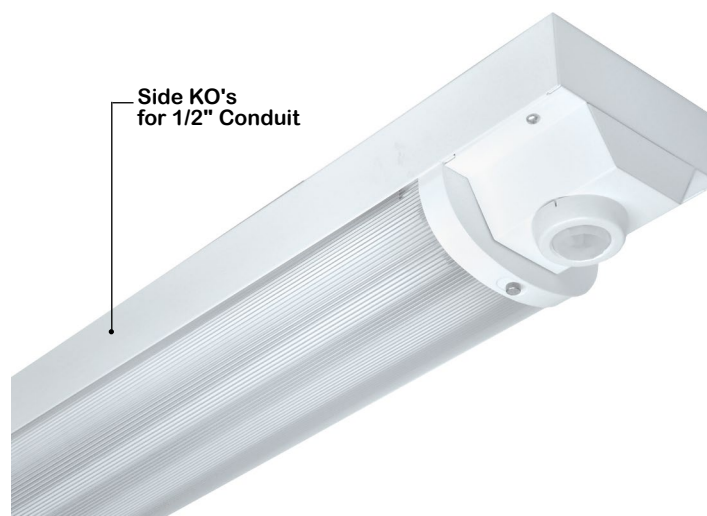
# WRAPAROUND

## WSE201 SERIES



MADE IN THE USA  
BAA Compliant

# Sensor Controlled Parking Structure



- Sensor Controlled Parking Structure Luminaire
- Wide Range Infrared Occupancy Sensor Standard, 50' Diameter Coverage / 8' Mtg. Height, Integral light Level daylighting Feature From 10-120 fc.
- Side KO's For 1/2" Conduit
- 22 ga. Cold Rolled Steel Housing With 18 ga. End Plates
- Welded And Painted After Fabrication
- 25% DR High Impact Frosted Acrylic Lens
- Lens Secured By Stainless Steel Knurled Head Screws
- Fully Neoprene Gasketed
- Suitable for Damp Locations
- Available with:
  - Fluorescent, LED and LED T8 (Internally Driven)
  - 95% Enhanced Specular Aluminum Reflectors
  - Tamper Proof Screws / Phillips Head Screws
  - Emergency Battery Pack

Photometric Data and IES Files are Available on [www.lalighting.com](http://www.lalighting.com)



### LOS ANGELES LIGHTING MFG. CO.

10141 OLNEY ST. / EL MONTE, CA 91731

TEL : 626-454-8300 FAX : 626-454-8399

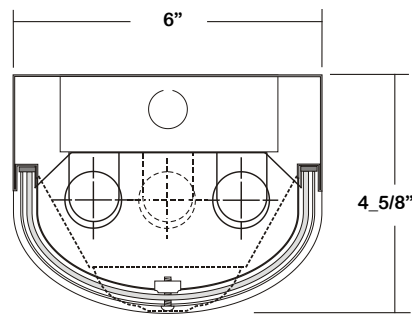
[www.lalighting.com](http://www.lalighting.com)



Side KO's for 1/2" Conduit

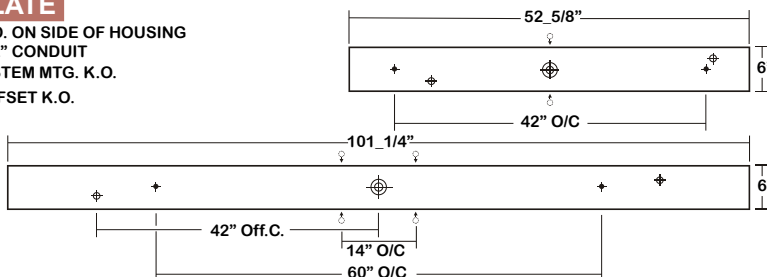
# WSE201 SERIES - LED T8

## CROSS SECTION



## BACK PLATE

- 7/8" K.O. ON SIDE OF HOUSING FOR 1/2" CONDUIT
- ◆ 11/16" STEM MTG. K.O.
- ⊕ 7/8" OFFSET K.O.
- ⊙ 2" K.O.



## SENSOR CONFIGURATION

**MS 2 A**

- A- ON / OFF
- B- Step Dimming
- 1- Middle Lamp
- 2- Outside Lamps
- 3- All Lamps
- 4- Other
- Motion Sensor

## CATALOG NUMBER

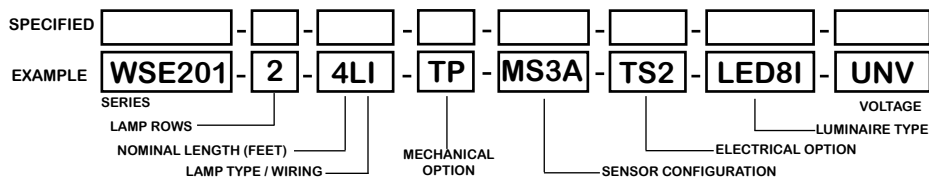
	NOMINAL LENGTH	TOTAL LAMPS		NOMINAL LENGTH	TOTAL LAMPS
WSE201-1-4LI	4'	1	WSE201-2-8LIT	8'	4
WSE201-1-4LR	4'	1	WSE201-2-8LRT	8'	4
WSE201-1-8LIT	8'	2	WSE201-3-4LI	4'	3
WSE201-1-8LRT	8'	2	WSE201-3-4LR	4'	3
WSE201-2-4LI	4'	2	WSE201-3-8LIT	8'	6
WSE201-2-4LR	4'	2	WSE201-3-8LRT	8'	6

## TS2 - LED Luminaire On/Off Safety Switch



- Easily accessible on exterior of wire way.
- Allows individual fixture to be switched ON/OFF during re-lamping or Maintenance.
- Prevents damage to lamp and electrical shock during lamping and re-lamping.
- Allows safe entry to wire way channel where power connector can be disconnected for maintenance to fixture.

## ORDERING GUIDE



## LAMP/ WIRING

**LI = LED T8 internal driver light tube.**  
Both ends powered.  
Shunted sockets used.



**LR = LED T8 internal driver light tube.**  
Single end powered.  
Non-shunted sockets used.



## OPTIONS AND ACCESSORIES

- **MECHANICAL OPTIONS**
- Tamper Proof Screws
- Phillips Head Screw

SUFFIX  
TP  
PH

- **ELECTRICAL OPTIONS**
- LED Luminaire ON/OFF Safety Switch

SUFFIX  
TS2  
\*

- **ACCESSORIES**
- Fixture Suspension System

CAT.NO.  
\*

\*See Appropriate Reference Page

## SPECIFICATIONS

\*\* Lamp(s) by others.

- **TYPE** 1, 2 or 3 lamps parking structure luminaire for LED T8 internal driver light tube (s)\*\*.
- **CONSTRUCTION** 22 ga. die formed cold rolled steel housing with 18ga. end plates, spot welded seams and corners.
- **FINISH** Baked white powder coated finish, minimum reflectance 90%, painted after fabrication.
- **OPTICS** 25% DR high impact linear pattern frosted acrylic lens, neoprene gasketed. Lens secured by steel lens-retainers and 2 knurled head thumb screws. Phillips head screws and temper proof screws available.
- **SENSOR** Wide range infrared occupancy sensor, 8' mounting height, 50' diameter coverage standard. Other sensor available.
- **WIRING** Operates LED T8 internal driver light tube(s)\*\*.
- **LABELS** Conforms to UL standard 1598 - SUB 8750.

