

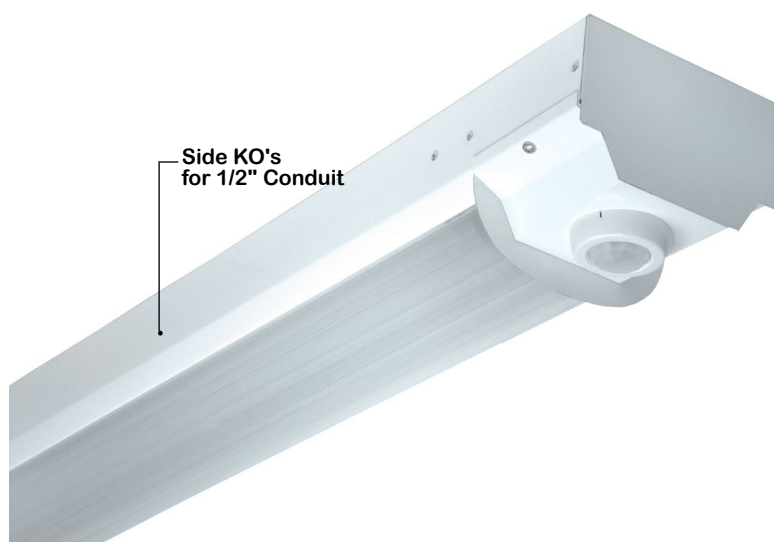


WRAPAROUND

WSE251 SERIES



Sensor Controlled Parking Structure



- Sensor Controlled Parking Structure Luminaire
- Wide Range Infrared Occupancy Sensor Standard, 50' Diameter Coverage / 8' Mtg. Height, Integral light Level daylighting Feature From 10-120 fc.
- Side KO's For 1/2" Conduit
- Aluminum Housing
- Baked White Polyester Finish
- Snap-On Radial Clear Ribbed Acrylic Lens
- Suitable for Damp Locations
- Available with:
 - Fluorescent, LED and LED T8 (Internally Driven)
 - 95% Enhanced Specular Aluminum Reflectors
 - Neoprene End Gasket
 - Emergency Battery Pack



Photometric Data and IES Files are Available on www.lalighting.com



LOS ANGELES LIGHTING MFG. CO.

10141 OLNEY ST. / EL MONTE, CA 91731

TEL : 626-454-8300 FAX : 626-454-8399

www.lalighting.com

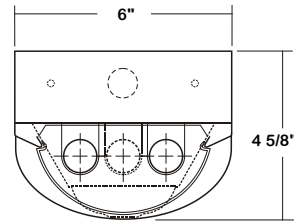
WALL BRACKET - Fluorescent

LED Equivalent Products Available on www.lalighting.com



WSE251 SERIES

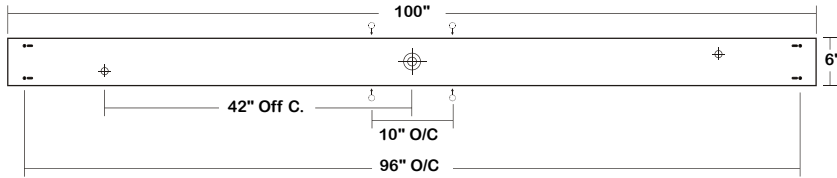
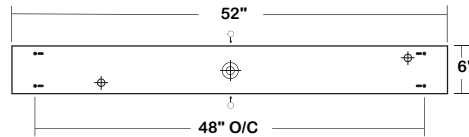
CROSS SECTION



Note: 3 Lamp configuration shown. 1 and 2 lamp configurations also available

BACK PLATE

- ◆ 11/16" STEM MTG. K.O.
- ⊕ 7/8" OFFSET K.O.
- ⊕ 2" K.O.
- 7/8" K.O. ON SIDE OF HOUSING FOR 1/2" CONDUIT



SENSOR CONFIGURATION

MS 2 A

- A- ON / OFF
- B- Step Dimming

- 1- Middle Lamp Row
- 2- Outside Lamp Rows
- 3- All Lamp Rows

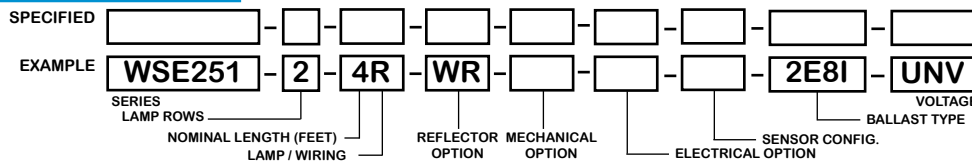
Motion Sensor

Note: Contact Customer Service when specifying sensor/lamp behavior.

CATALOG NUMBER

	NOMINAL LENGTH	TOTAL LAMPS		NOMINAL LENGTH	TOTAL LAMPS
WSE251-1-4M	4'	1	WSE251-1-4R	4'	1
WSE251-1-8MT	8'	2	WSE251-1-8RT	8'	2
WSE251-2-4M	4'	2	WSE251-2-4R	4'	2
WSE251-2-8MT	8'	4	WSE251-2-8RT	8'	4
WSE251-3-4M	4'	3	WSE251-3-4R	4'	3
WSE251-3-8MT	8'	6	WSE251-3-8RT	8'	6

ORDERING GUIDE



NOTE: LAMP/WIRING*
 M= Miniature Bi-Pin T5
 MT= Miniature Bi-Pin T5 Tandem Wiring
 R= Medium Bi-Pin T8
 RT= Medium Bi-Pin T8 Tandem Wiring

OPTIONS AND ACCESSORIES

REFLECTOR OPTIONS

- Specular Aluminum Reflector (95%)
- White Reflector

SUFFIX
SR
WR

ELECTRICAL OPTIONS

- Emergency Battery Pack
- External Line Fusing (HLR/GLR)

SUFFIX
BP*
ELF

BALLAST OPTIONS*

- Electronic T5
- Electronic T5HO
- Electronic T8 Instant Start
- Electronic T8 Rapid Start
- Electronic T8HO

x = Number of Lamps per Ballast

ACCESSORIES

- Fixture Suspension System

SUFFIX
xE5
xE5H
xE8I
xE8R
xE8H

CAT.NO.
*

*Refer to www.lalighting.com/resources for more information

SPECIFICATIONS

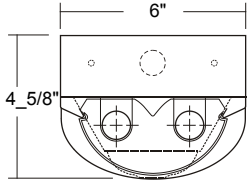
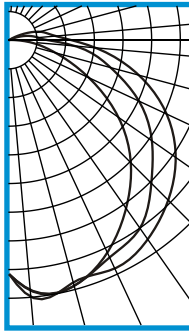
- **TYPE** 1, 2 or 3 lamp sensor-controlled parking structure luminaire.
- **CONSTRUCTION** Aluminum housing with riveted end plates.
- **FINISH** Baked white polyester finish, minimum reflectance 90%.
- **REFLECTOR** White reflector standard, (95% reflectance specular aluminum reflector available).
- **OPTICS** 4' snap-on radial clear acrylic ribbed lens, end neoprene gasket available. Two lenses per 8' fixture.
- **SENSOR** Wide range infrared occupancy sensor, 8' mounting height, 50' diameter coverage standard. Integral light level day-lighting feature from 10-120 fc. Other sensor available.
- **WIRING** 120v 60Hz., 277v 60Hz., UNV (universal voltage 120v thru 277v.) or as otherwise specified.
- **LABELS** U.L. Listed. Suitable for damp locations.



PHOTOMETRIC DATA

WSE251-2-4R-SR-E8

TEST NO.=LA-T1926
LAMP TYPE=F032/31K
NO. OF LAMP=2
LUMENS PER LAMP=2900
WATTS PER LAMP=32
BALLAST FACTOR=1
PHOTOMETRY TYPE=C



CANDLEPOWER

ANGLE	END	45	CROSS
0	1021	1021	1021
5	1095	1098	1126
15	1108	1108	1093
25	1019	1044	1098
35	892	999	1058
45	751	878	984
55	581	760	888
65	381	624	758
75	207	457	585
85	85	288	378
90	31	170	273
95	11	127	205
105	1	72	142
115	0	16	58
125	0	1	6
135	0	0	1
145	0	0	0
155	0	0	0
165	0	0	0
175	0	0	0
180	0	0	0

ZONAL LUMEN SUMMARY

DEGREES	LUMENS	% LAMP	% FIXTURE
0-30	904	15.6	20.5
0-40	1524	26.3	34.6
0-60	2871	49.5	65.1
0-90	4171	71.9	94.6
90-120	238	4.1	5.4
90-150	240	4.1	5.4
90-180	240	4.1	5.4
0-180	4411	76.0	100.0

Lumen Output = 4411 lumens
Luminaire Efficiency = 76.0%

SPACING CRITERION

ALONG	ACROSS
1.35	1.55

This space is intentionally left blank.

This space is intentionally left blank.

This space is intentionally left blank.

