



# CLEAN ROOM LED

## GCR720 (2X2) SERIES (2X4 AVAILABLE)

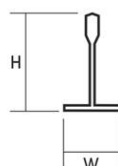
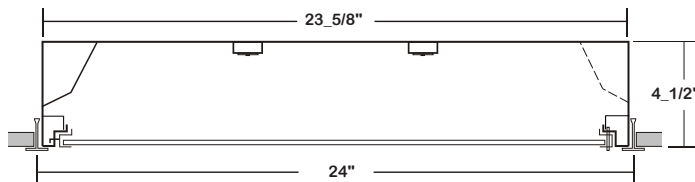
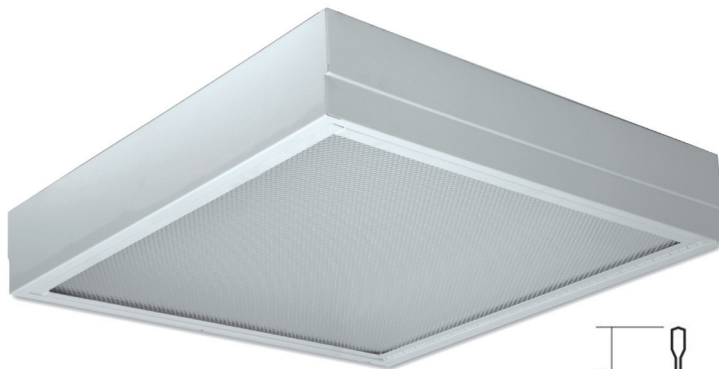
CLASS 1000/10000 CLEAN ROOM GRID LUMINAIRE

|      |  |
|------|--|
| JOB  |  |
| TYPE |  |
| DATE |  |

WWW.LALIGHTING.COM  
626-454-8300

### CLASS 1000/10000 GRID MOUNTED LED LUMINAIRE FOR 1" OR 1\_1/2" WIDE INVERTED T-BAR CEILINGS

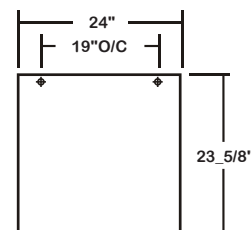
### DIMENSIONS



#### T-BAR SIZING

| WIDTH  | HEIGHT |
|--------|--------|
| 15/16" | 1_1/2" |
| 1_1/2" | 1_1/2" |

Ø 7/8" K.O.



### APPLICATIONS

- Clean Room, Sealed Ceiling Areas, Commercial

### FEATURES

- 0-10V dimming driver standard (See [DRIVER OPTIONS](#) for other dimming types)
- Supports California Title 24 compliance

### OPTIONS

- Full customization available upon request
- Additional lumen packages and color temperatures available
- Controls and sensors available (See [SENSOR OPTIONS](#) for controls and sensors)
- Wireless control options available (See [SENSOR OPTIONS](#) for wireless controls)
- Variety of lenses available (See [OPTICAL OPTIONS](#) for lenses)
- Emergency battery pack available (See [BATTERY PACK OPTIONS](#) for battery pack options)
- Antimicrobial finished housing and door frame available
- Tamper proof screws available

### SPECIFICATIONS

#### CONSTRUCTION

- Class 1000/10000 / ISO Class 6 equivalent / ISO Class 7 equivalent
- 22 ga. cold rolled steel welded housing
- All parts fitted and sealed
- 20 ga. cold rolled steel door frame secured by T-hinges and positive spring loaded latches
- Door frame sealed with neoprene gasket

#### FINISH

- Baked white powder coated finish / welded and painted after fabrication / minimum reflectance 90%

#### OPTICAL

- Inverted clear prismatic acrylic lens (nominal 0.125) standard

#### ELECTRICAL

- High efficiency drivers coupled with long-life LEDs
- Service life greater than 50,000 hours (L70)
- Universal voltage 120V through 277V (347V / 480V available)
- Power Factor (PF) ≥ 0.9
- Total Harmonic Distortion (THD) ≤ 20%

#### LISTING

- UL USA and Canada listed / suitable for damp locations

#### WARRANTY

- 5-year limited warranty standard, 10-year limited warranty available.



**Los Angeles Lighting Mfg. Co.**  
Headquarters Contact Us  
10141 Olney Street T: 626-454-8300  
El Monte, CA 91731 F: 626-454-8399  
Made in the USA www.lalighting.com



BAA Compliant



Due to continued product improvements and enhancements, Los Angeles Lighting Manufacturing Company reserves the right to alter specifications, dimensions, data, and/or materials without notice. Please visit our website to view the most current information.



MADE IN THE U.S.A.

Revised 07/13/20

WARNING



**DRIVER OPTIONS**

PLEASE CONSULT FACTORY TO SEE IF YOUR SELECTED DRIVER OPTION WORKS WITH THIS FIXTURE.

**DRDM (TY) UNV**

**VOLTAGE**

- 120V** 120 Volt
- 277V** 277 Volt
- UNV** Universal 120-277 Volt \*
- 347V** 347 Volt
- 480V** 480 Volt

**TY**

- TY** 10-Years Limited Warranty

**DRIVER TYPE**

- DRDM** 0-10V Dimming Driver \*
- DRDM1** 0-10V Dimming Driver, 1% Dimming
- DRDM2C** 2-Channel 0-10V Dimming Driver (for Color Tunable White)
- DR2W** 2-Wire Phase Dimming Driver
- DRDA** Digital Addressable DALI Dimming Driver
- DRDA2C** Digit Digital Addressable DALI Type8 2-Channel Driver (for Color Tunable White)
- DRDA2.0** Digital Addressable DALI 2.0 Dimming Driver
- DRDA2.02C** Digital Addressable DALI 2.0 Type8 2-Channel Driver (for Color Tunable White)
- DRSD** Step Dimming Driver
- DR(LTEA2W)** Lutron® 2-Wire 1% Dimming Driver (120V Forward Phase only)
- DR(LDE1)** Lutron® EcoSystem 1% Soft-On, Fade-to-Black™ Dimming Driver
- DR(LDE5)** Lutron® EcoSystem 5% Dimming Driver
- DR(PEQ0E)** Lutron® EcoSystem 0.1% Soft-On, Fade-to-Black Dimming Driver
- DR(PSQ020)** Lutron® T-Series Digital 1% Dimming 2-Channel Driver (for Color Tunable White)
- DRCR** Control Ready Driver
- DRCR(DXL)** Osram Dexal Driver
- DRCR(SR)** Philips Sensor Ready Driver

**BATTERY PACK OPTIONS**

PLEASE CONSULT FACTORY TO SEE IF YOUR SELECTED BATTERY PACK OPTION WORKS WITH THIS FIXTURE.

LED EMERGENCY BATTERY PACKS  
(Operate for 90 minutes unless otherwise specified)

**BPL SL 1.5 (2H)**

**NOTE**

- 2H** 2 hours

**LUMEN PACKAGE**

- 0.7** Nominal 750 Lumens
  - 1.5** Nominal 1500 Lumens \*
  - 3.0** Nominal 3000 Lumens
- \*Additional lumen packages available*

**TYPE**

- (Blank)** Normal Ambient Temp. / Standard Operation
- C** Cold Environment (-20°C)
- F** With Flex for Remote Mounting
- SL** Slim Casing
- ST** Self Test / Diagnostic

\* Normal Stock Item



**Los Angeles Lighting Mfg. Co.**  
 Headquarters Contact Us  
 10141 Olney Street T: 626-454-8300  
 El Monte, CA 91731 F: 626-454-8399  
 Made in the USA www.lalighting.com



**BAA Compliant**



Due to continued product improvements and enhancements, Los Angeles Lighting Manufacturing Company reserves the right to alter specifications, dimensions, data, and/or materials without notice. Please visit our website to view the most current information.



**MADE IN THE U.S.A.**  
 Revised 07/13/20  
**WARNING**

## SENSOR OPTIONS

**HIGH FREQUENCY** - INTERNALLY MOUNTED BEHIND FIXTURE LENS**MSHPC - Motion Sensor High Frequency (Microwave) with Photocell Option**

- Super high frequency motion sensor (also known as microwave sensor) which detects movement when installed behind low density fixture materials, such as polycarbonate, acrylic and glass diffusers
- Holds lights OFF when sufficient daylight is present regardless of motion detection
- Selectable sensitivity and detection area
- Universal Voltage (120V-277V)
- Photocell is disabled by default

**MSH - Motion Sensor High Frequency (Microwave)**

- Super high frequency motion sensor (also known as microwave sensor) which detects movement when installed behind low density fixture materials, such as polycarbonate, acrylic and glass diffusers
- Turns light ON/OFF based on motion detection
- Universal Voltage (120V-277V)



## CONTROLS AND SENSORS

**WLC(LED RU) - EnOcean® LED Relay Zone Controller**

- Supports a single LED fixture or multiple daisy chained LED fixtures
- Module installed inside lighting fixture

**ESRPU-W-EO - EnOcean® Rocker Switch – Single – Surface Mount**

- Wireless single rocker switch with mounting plate
- No batteries needed

**ESDRPU-W-EO - EnOcean® Rocker Switch – Double – Surface Mount**

- Wireless double rocker switch with mounting plate
- No batteries needed

**S3054-N30 - EnOcean® Navigan NWC 300U – Commissioning Tool**

- Navigan Wireless Commissioner is used to configure EnOcean controllers & sensors
- It can be used to define link tables, change parameters/settings, and to edit & store projects
- Configuration settings can be saved and cloned to enable quick configuration
- Connectivity is through the NWC 300U USB Stick

**EOSWU-W-EO - EnOcean® Occupancy Sensor – Wall Mount**

- Wireless wall mounted occupancy sensor
- Solar powered - no batteries needed (coin battery operated in low light conditions)
- PIR motion sensor with both wide angle (50') and long range (100') options
- Mounting height: 6-8 feet

**EOSCU-W-EO - EnOcean® Occupancy Sensor – Ceiling Mount**

- Wireless ceiling mounted occupancy sensor
- Solar powered - no batteries needed (coin battery operated in low light conditions)
- PIR motion sensor with 360 degree viewing angle lens (34" diameter)
- Mounting height: 7-10 feet

**EOSCU-W-EO - EnOcean® Light Level Sensor**

- Light Level sensor that measures and reports the level of available natural light
- Solar powered - no batteries needed (coin battery operated in low light conditions)
- Enables implementation of daylight harvesting control systems
- Mounting position: At the ceiling, close to ambient light source



Los Angeles Lighting Mfg. Co.

Headquarters Contact Us  
10141 Olney Street T: 626-454-8300  
El Monte, CA 91731 F: 626-454-8399  
Made in the USA www.lalighting.com



BAA Compliant



Due to continued product improvements and enhancements, Los Angeles Lighting Manufacturing Company reserves the right to alter specifications, dimensions, data, and/or materials without notice. Please visit our website to view the most current information.



MADE IN THE U.S.A.

Revised 07/13/20

WARNING

**OPTICAL OPTIONS**

**STANDARD LENSES FOR GCR720**

|             |  |
|-------------|--|
| <b>PA2</b>  | Clear Prismatic Acrylic, Nom. 0.125 OA Thickness, Female Prisms 3/16 Square Base |
| <b>FPA2</b> | Frosted Prismatic Acrylic, Nom. 0.125 OA Thickness                               |

**ADDITIONAL AVAILABLE LENSES**

(Not all optics suitable for fixture. Please consult factory to ensure selected optical option suits fixture. Please consult factory regarding any optical options not shown)

**EXTRUDED PRISMATIC PATTERNS**

|               |   |
|---------------|---|
| <b>PA</b>     | Clear Prismatic Acrylic, No Thickness Specified, Female Prisms 3/16 Square Base         |
| <b>PA3</b>    | Clear Prismatic Acrylic, Min. 0.125 OA Thickness, Female Prisms 3/16 Square Base        |
| <b>PA8</b>    | Clear Prismatic Acrylic, Nom. 0.187 OA Thickness, Female Prisms 3/16 Square Base        |
| <b>P15</b>    | Clear Prismatic Acrylic, Nom. 0.200 OA Thickness, Female Prisms 3/8 Square Base         |
| <b>P195</b>   | Clear Prismatic Acrylic, Nom. 0.150 OA Thickness, Male Conical Prisms 3/16 Square Base  |
| <b>P198</b>   | Clear Prismatic Acrylic, Nom. 0.187 OA Thickness, Male Conical Prisms 3/16 Square Base  |
| <b>PWA2</b>   | White Prismatic Acrylic, Nom. 0.125 OA Thickness, Female Prisms 3/16 Square Base        |
| <b>P3E</b>    | 3E Batwing Pattern Lens   |
| <b>P195RF</b> | Clear Prismatic Acrylic, 19 Shunts Radio Frequencies To Ground, Nom. 0.150 OA Thickness |
| <b>PA2UV</b>  | Clear Prismatic Acrylic, UV Blocking, Nom. 0.125 OA Thickness                           |

**FLAT DIFFUSERS**

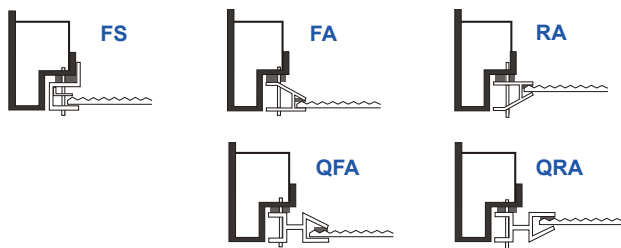
|            |   |             |   |
|------------|---|-------------|---|
| <b>FWA</b> | Flat White Acrylic, No Thickness Specified, Stippled Finish | <b>FWA2</b> | Flat White Acrylic, Nom. 0.125 Thickness, Stippled Finish |
| <b>FFA</b> | Frosted Flat Acrylic, No Thickness Specified                | <b>FFA2</b> | Frosted Flat Acrylic, Nom. 0.125 Thickness                |
| <b>CA8</b> | Clear Acrylic, Nom. 0.187 OA Thickness                      | <b>CA</b>   | Clear Acrylic, No Thickness Specified                     |
|            |   | <b>CA2</b>  | Clear Acrylic, Nom. 0.125 OA Thickness                    |

**HIGH IMPACT**

|             |  |
|-------------|--|
| <b>VL25</b> | Clear Polycarbonate, Nom. 0.125 Thickness with 0.125 Clear Prismatic Acrylic Overlay         |
| <b>VL37</b> | Clear Polycarbonate, Nom. 0.250 Thickness with 0.125 Clear Prismatic Acrylic Overlay         |
| <b>CPC2</b> | Clear Polycarbonate, Nom. 0.125 OA Thickness   |
| <b>CPC8</b> | Clear Polycarbonate, Nom. 0.187 OA Thickness   |
| <b>PPC8</b> | Clear Prismatic Polycarbonate, Nom. 0.187 OA Thickness, Female Prisms 3/16 Square Base       |
| <b>DRP3</b> | High Impact Clear Prismatic Acrylic, Min. 0.125 OA Thickness, Female Prisms 3/16 Square Base |
| <b>DRP2</b> | High Impact Clear Prismatic Acrylic, Nom. 0.125 OA Thickness, Female Prisms 3/16 Square Base |
| <b>DRP8</b> | High Impact Clear Prismatic Acrylic, Nom. 0.187 OA Thickness, Female Prisms 3/16 Square Base |
| <b>PPC2</b> | Clear Prismatic Polycarbonate, Nom. 0.125 OA Thickness, Female Prisms 3/16 Square Base       |

**DOOR FRAME**

**CROSS SECTION**



- FINISHES**
- W** White Enamel
  - B** Black Enamel
  - N** Natural Anodized Aluminum (Only FA / RA / QFA / QRA styles)
- STYLES**
- FS** Flat Steel (with internal frame rail)
  - FA** Flat Extruded Aluminum
  - RA** 5/8" Regressed Extruded Aluminum
  - QFA** Flat Extruded Aluminum-Black Reveal
  - QRA** 1/2" Regressed Extruded Aluminum-Black Reveal

**FEATURES**

- Inverted Lens
- T-Hinges and Positive Spring Loaded Latches
- Sealed with Neoprene Gasket
- Light Stop Covers Installed
- Internal Frame Rail



**Los Angeles Lighting Mfg. Co.**  
 Headquarters Contact Us  
 10141 Olney Street T: 626-454-8300  
 El Monte, CA 91731 F: 626-454-8399  
 Made in the USA www.lalighting.com



**BAA Compliant**



Due to continued product improvements and enhancements, Los Angeles Lighting Manufacturing Company reserves the right to alter specifications, dimensions, data, and/or materials without notice. Please visit our website to view the most current information.



**MADE IN THE U.S.A.**

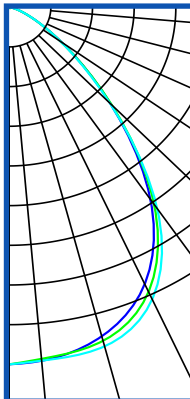
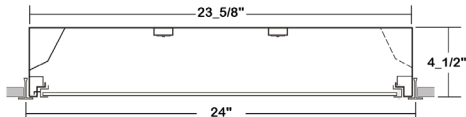
Revised 07/13/20

**WARNING**

# PHOTOMETRIC DATA - GCR720 SERIES

## GCR720-4-2L-FSW-PA2-DRDM-UNV-2/840

TEST NO. = LA-T3176-2  
 LED TYPE = 48 LED MODULE  
 NO. OF MODULE = 2  
 SYSTEM WATT (W) = 33.1  
 CRI ≥ 80  
 L70(Hrs.) ≥ 50,000  
 PHOTOMETRY TYPE = C



### CANDLEPOWER

| ANGLE | END  | 45   | CROSS |
|-------|------|------|-------|
| 0     | 1797 | 1797 | 1797  |
| 5     | 1787 | 1777 | 1786  |
| 15    | 1715 | 1738 | 1767  |
| 25    | 1537 | 1581 | 1622  |
| 35    | 1181 | 1211 | 1237  |
| 45    | 686  | 695  | 683   |
| 55    | 307  | 304  | 301   |
| 65    | 109  | 110  | 110   |
| 75    | 31   | 30   | 31    |
| 85    | 4    | 4    | 4     |
| 90    | 0    | 0    | 0     |
| 95    | 0    | 0    | 0     |
| 115   | 0    | 0    | 0     |
| 125   | 0    | 0    | 0     |
| 135   | 0    | 0    | 0     |
| 145   | 0    | 0    | 0     |
| 155   | 0    | 0    | 0     |
| 165   | 0    | 0    | 0     |
| 175   | 0    | 0    | 0     |
| 180   | 0    | 0    | 0     |

### ZONAL LUMEN SUMMARY

| DEGREES | LUMENS | % LAMP | % FIXTURE |
|---------|--------|--------|-----------|
| 0-30    | 1395   | 32.5   | 44.8      |
| 0-40    | 2155   | 50.3   | 69.3      |
| 0-60    | 2963   | 69.1   | 95.3      |
| 0-90    | 3108   | 72.5   | 100.0     |
| 90-120  | .03    | 0.0    | 0.0       |
| 90-150  | .03    | 0.0    | 0.0       |
| 90-180  | .03    | 0.0    | 0.0       |
| 0-180   | 3108   | 72.5   | 100.00    |

Luminaire Output= 3108 lumens  
 Luminaire Efficacy = 93.9 lm/W

### SPACING CRITERION

| ALONG | ACROSS |
|-------|--------|
| 1.13  | 1.18   |

