



# RECESSED LED

## GHL306 (8FT) SERIES (4' AVAILABLE)

6" WIDE HINGE AND LATCH DOOR FRAME GRID LUMINAIRE

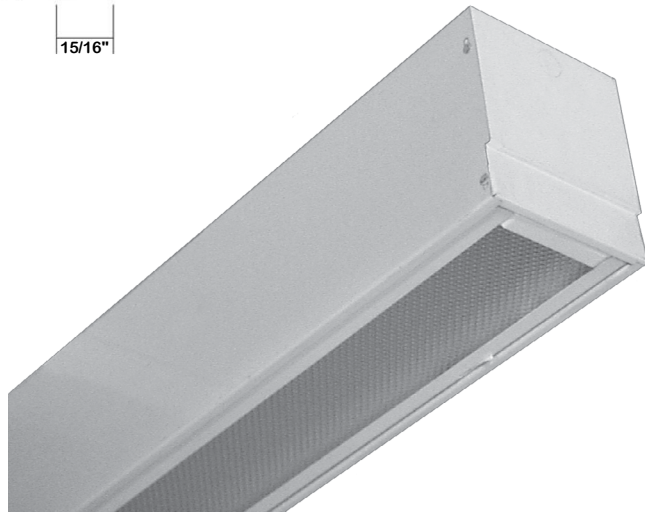
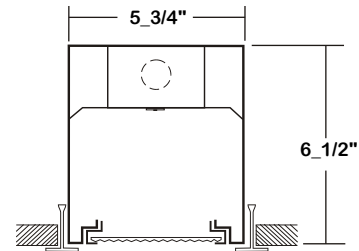
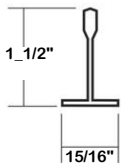


DATE	
JOB	

WWW.LALIGHTING.COM  
626-454-8300

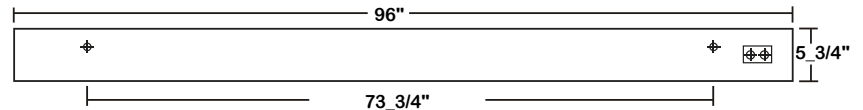
### RECESSED MOUNTED LED LUMINAIRE FOR INVERTED T-BAR CEILINGS

### DIMENSIONS



ACCESS PLATE

7/8" K.O.



### APPLICATIONS

- Commercial

### FEATURES

- 0-10V dimming driver standard (See *DRIVER OPTIONS* for other dimming types)
- Supports California Title 24 compliance

### OPTIONS

- Full customization available upon request
- Additional lumen packages and color temperatures available
- Wireless control options available (See *SENSOR OPTIONS* for wireless controls)
- Variety of lenses available (See *OPTICAL OPTIONS* for lenses)
- Emergency battery pack available (See *BATTERY PACK OPTIONS* for battery pack options)
- Tamper proof screws available

### SPECIFICATIONS

#### CONSTRUCTION

- 22 ga. cold rolled steel housing (20 ga. cold rolled steel housing available)
- 20 ga. cold rolled steel door frame (extruded aluminum finishes available) secured by T-hinges and positive spring loaded latches / screwed at each corner / two 4' door frames per 8' fixture
- One way polyurethane gasket (additional gasket options available)

#### FINISH

- Baked white polyester finish / powder coated finish available / minimum reflectance 86%
- Door frame: painted after fabrication

#### OPTICAL

- Clear prismatic acrylic

#### ELECTRICAL

- High efficiency drivers coupled with long-life LEDs
- Service life greater than 50,000 hours (L70)
- Universal voltage 120V through 277V (347V / 480V available)
- Power Factor (PF)  $\geq 0.9$
- Total Harmonic Distortion (THD)  $\leq 20\%$

#### LISTING

- UL USA and Canada listed / suitable for damp locations

#### WARRANTY

- 5-year limited warranty



**Los Angeles Lighting Mfg. Co.**  
Headquarters  
10141 Olney Street  
El Monte, CA 91731  
Made in the USA

Contact Us  
T: 626-454-8300  
F: 626-454-8399  
www.lalighting.com



Due to continued product improvements and enhancements, Los Angeles Lighting Manufacturing Company reserves the right to alter specifications, dimensions, data, and/or materials without notice. Please visit our website to view the most current information.

**MADE IN THE U.S.A.**

Revised 07-05-18

ORDERING INFORMATION

EXAMPLE: GHL306-4-8L-FSW-PA-TP-BPL10-1DRDM-UNV-1/840

SERIES	LED LUMEN PACKAGE	EFFICACY	NOMINAL LENGTH	DOOR FRAME	OPTICAL	MECHANICAL	ELECTRICAL	DRIVER	VOLTAGE	# OF LED ROW	CRI / CCT
<b>GHL306</b>			<b>8L</b>					<b>1DRDM</b>	<b>UNV</b>	<b>1</b>	
<b>GHL306</b> 6" Wide Hinge and Latch Door Frame Grid LED Luminaire	<b>4</b> Nom. 4000 Lumens <b>8</b> Nom. 8000 Lumens <b>12</b> Nom. 12000 Lumens <b>16</b> Nom. 16000 Lumens  <b>*Additional Lumen Packages Available</b>	<b>(Blank)</b> Standard (Only 4000 / 8000 / 16000 lumens Systems)  <b>HE</b> High Efficacy (Only 4000 / 8000 / 12000 lumens Systems)	<b>8L</b> 8'	<b>FSW</b> Flat Steel White Enamel  <i>See DOOR FRAME for Options</i>	<b>PA</b> Clear Prismatic Acrylic  <b>FPA2</b> Frosted Prismatic Acrylic 0.125  <b>FFA</b> Frosted Flat Acrylic  <i>See OPTICAL OPTIONS for Options</i>	<b>TP</b> Tamper Proof Screws (Hex Socket with Post)  <b>GSKNx</b> Neoprene Gasket  <i>See GASKET for Options</i>  *Leave Blank if Not Specified  <i>Additional Mechanical Options</i>	<b>BPL10</b> Emergency Battery Pack, Constant 10W Nom. 1500 lm  <i>See BATTERY PACK OPTIONS for Options</i>  <b>WLC(LED RU)</b> EnOcean Wireless Control  <i>See SENSOR OPTIONS for Options</i>  *Leave Blank if Not Specified  <i>Additional Electrical Options</i>	<b>1DRDM</b> 0-10V One Dimming Driver  <i>See DRIVER OPTIONS for Options</i>	<b>UNV</b> 120V-277V  <i>See DRIVER OPTIONS for Options</i>	<b>1</b> One LED Row	<b>830</b> 80+CRI / 3000K Color Temp.  <b>835</b> 80+CRI / 3500K Color Temp.  <b>840</b> 80+CRI / 4000K Color Temp.  <b>850</b> 80+CRI / 5000K Color Temp.  *Additional Color Temp. Available

SYSTEM DATA

THESE ARE THE MOST POPULAR LUMEN PACKAGES. PLEASE CONSULT FACTORY FOR ADDITIONAL SYSTEM DATA.

LED LUMEN PACKAGE	NORMAL AMBIENT TEMPERATURE PRODUCT CODE	DELIVERED LUMENS	SYSTEM WATTS	LUMINAIRE EFFICACY	AMBIENT TEMP.	FLUORESCENT EQUIVALENT	IES FILES
4000 Lumens (Nominal)	GHL306-4-8L-FSW-PA-1DRDM-UNV-1/840	1837 lm	28.7 W	64.1 lm/W	-20°C / 35°C	2-F32T8	*
8000 Lumens (Nominal)	GHL306-8-8L-FSW-PA-1DRDM-UNV-1/840	3669 lm	63.2 W	58.0 lm/W	-20°C / 35°C	8-F32T8, 4-F54T5HO	<a href="#">LA-T3131</a>
12000 Lumens (Nominal)	GHL306-12-8L-FSW-PA-1DRDM-UNV-1/840	5450 lm	104.6 W	52.1 lm/W	-20°C / 35°C	6-F32T8	*
16000 Lumens (Nominal)	GHL306-16-8L-FSW-PA-1DRDM-UNV-1/840	7117 lm	101.7 W	70.0 lm/W	-20°C / 35°C	8-F32T8, 4-F54T5HO	*

LED LUMEN PACKAGE	NORMAL AMBIENT TEMPERATURE (HIGH EFFICACY) PRODUCT CODE	DELIVERED LUMENS	SYSTEM WATTS	LUMINAIRE EFFICACY	AMBIENT TEMP.	FLUORESCENT EQUIVALENT	IES FILES
4000 Lumens (Nominal)	GHL306-4HE-8L-FSW-PA-1DRDM-UNV-1/840	1923 lm	24.1 W	79.8 lm/W	-20°C / 35°C	2-F32T8	*
8000 Lumens (Nominal)	GHL306-8HE-8L-FSW-PA-1DRDM-UNV-1/840	3786 lm	49.6 W	76.3 lm/W	-20°C / 35°C	8-F32T8, 4-F54T5HO	*
12000 Lumens (Nominal)	GHL306-12HE-8L-FSW-PA-1DRDM-UNV-1/840	5517 lm	75.8 W	72.8 lm/W	-20°C / 35°C	6-F32T8	*

**NOTE:**  
System data is based on 120V input voltage. Actual performance may differ as a result of end-user environment and application.

This fixture has been tested and listed in accordance with UL Standards. L.A. Lighting certifies that it will operate safely when installed properly, and within an ambient temperature range noted in the system data table.

Additional lumen packages and color temperatures available.

PERFORMANCE DATA

VIEW PHOTOMETRICS



**Los Angeles Lighting Mfg. Co.**  
Headquarters  
10141 Olney Street  
El Monte, CA 91731  
Made in the USA  
  
Contact Us  
T: 626-454-8300  
F: 626-454-8399  
www.lalighting.com



Due to continued product improvements and enhancements, Los Angeles Lighting Manufacturing Company reserves the right to alter specifications, dimensions, data, and/or materials without notice. Please visit our website to view the most current information.

**MADE IN THE U.S.A.**

**SENSOR OPTIONS**



**CONTROLS AND SENSORS**

**WLC(LED RU) - EnOcean® LED Relay Zone Controller**

- Supports a single LED fixture or multiple daisy chained LED fixtures
- Module installed inside lighting fixture

**ESRPU-W-EO - EnOcean® Rocker Switch – Single – Surface Mount**

- Wireless single rocker switch with mounting plate
- No batteries needed

**EDRPU-W-EO - EnOcean® Rocker Switch – Double – Surface Mount**

- Wireless double rocker switch with mounting plate
- No batteries needed

**S3054-N300 - EnOcean® Navigan NWC 300U – Commissioning Tool**

- Navigan Wireless Commissioner is used to configure EnOcean controllers & sensors
- It can be used to define link tables, change parameters/settings, and to edit & store projects
- Configuration settings can be saved and cloned to enable quick configuration
- Connectivity is through the NWC 300U USB Stick

**EOSWU-W-EO - EnOcean® Occupancy Sensor – Wall Mount**

- Wireless wall mounted occupancy sensor
- Solar powered - no batteries needed (coin battery operated in low light conditions)
- PIR motion sensor with both wide angle (50') and long range (100') options
- Mounting height: 6-8 feet

**EOSCU-W-EO - EnOcean® Occupancy Sensor – Ceiling Mount**

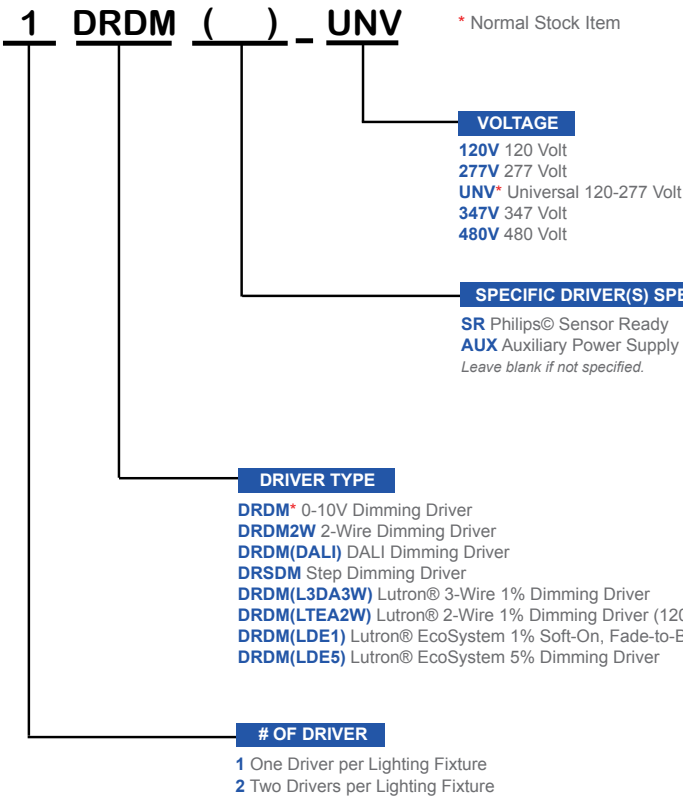
- Wireless ceiling mounted occupancy sensor
- Solar powered - no batteries needed (coin battery operated in low light conditions)
- PIR motion sensor with 360 degree viewing angle lens (34' diameter)
- Mounting height: 7-10 feet

**ELLSU-W-EO - EnOcean® Light Level Sensor – Ceiling Mount**

- Light Level sensor that measures and reports the level of available natural light
- Solar powered - no batteries needed (coin battery operated in low light conditions)
- Enables implementation of daylight harvesting control systems
- Mounting position: At the ceiling, close to ambient light source

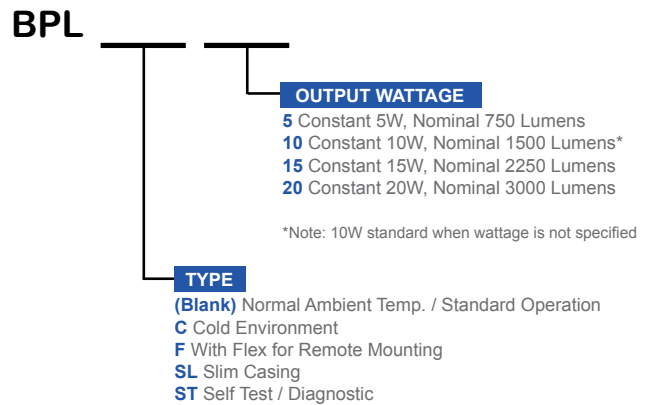
**DRIVER OPTIONS**

PLEASE CONSULT FACTORY TO SEE IF YOUR SELECTED DRIVER OPTION WORKS WITH THIS FIXTURE.



**BATTERY PACK OPTIONS**

PLEASE CONSULT FACTORY TO SEE IF YOUR SELECTED BATTERY PACK OPTION WORKS WITH THIS FIXTURE.



**Los Angeles Lighting Mfg. Co.**  
 Headquarters  
 10141 Olney Street  
 El Monte, CA 91731  
 Made in the USA

Contact Us  
 T: 626-454-8300  
 F: 626-454-8399  
 www.lalighting.com



Due to continued product improvements and enhancements, Los Angeles Lighting Manufacturing Company reserves the right to alter specifications, dimensions, data, and/or materials without notice. Please visit our website to view the most current information.

**MADE IN THE U.S.A.**

**OPTICAL OPTIONS**

**STANDARD LENSES FOR GHL306**

<b>PA</b>	Clear Prismatic Acrylic, No Thickness Specified, Female Prisms 3/16 Square base
<b>FPA2</b>	Frosted Prismatic Acrylic, Nom. 0.125 OA Thickness, Female Prisms 3/16 Square Base
<b>FFA</b>	Frosted Flat Acrylic, No Thickness Specified

**DOOR FRAME**

CROSS SECTION



**FS** **W**

**FINISHES**  
**W** White Enamel  
**B** Black Enamel  
**N** Natural Anodized Aluminum  
 (Only FA / RA styles)

**STYLES**  
**FS** Flat Steel  
**FA** Flat Extruded Aluminum  
**RA** 5/8" Regressed Extruded Aluminum

**GASKET**

**GSK N 1**

**GASKET**

**MATERIAL TYPE**  
**N** Neoprene  
 Leave Blank for Polyurethane

**LOCATION**  
**1** One-Way  
**2** Two-Way  
**3** Three-Way

	1 - WAY	2 - WAY	3 - WAY
T-BAR			
	Only with FS / FA / RA style door frames.	Only with FS style door frame.	Only with FS style door frame.



**Los Angeles Lighting Mfg. Co.**  
 Headquarters  
 10141 Olney Street  
 El Monte, CA 91731  
 Made in the USA

Contact Us  
 T: 626-454-8300  
 F: 626-454-8399  
 www.lalighting.com



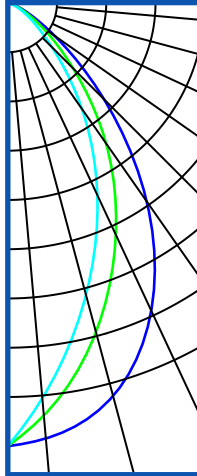
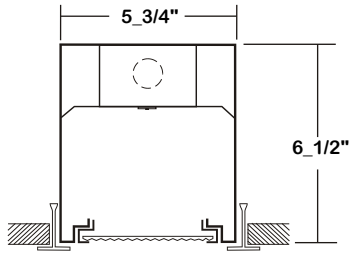
Due to continued product improvements and enhancements, Los Angeles Lighting Manufacturing Company reserves the right to alter specifications, dimensions, data, and/or materials without notice. Please visit our website to view the most current information.

**MADE IN THE U.S.A.**

**PHOTOMETRIC DATA - GHL306 - 8'**

**GHL306-8-8L-FWS-PA-1DRDM-UNV-1/840**

TEST NO. = LA-T3131  
 LED TYPE = 48 LED MODULE  
 NO. OF MODULE = 4  
 SYSTEM WATT (W) = 63.2  
 CRI ≥ 80  
 L70(Hrs.) ≥ 50,000  
 PHOTOMETRY TYPE = C



**CANDLEPOWER**

ANGLE	END	45	CROSS
0	3183	3183	3183
5	3189	2988	2887
15	2938	2472	2153
25	2453	1862	1535
35	1766	1247	942
45	986	678	448
55	414	305	204
65	140	110	81
75	39	29	22
85	5	3	2
90	0	0	0
95	0	0	0
105	0	0	0
115	0	0	0
125	0	0	0
135	0	0	0
145	0	0	0
155	0	0	0
165	0	0	0
175	0	0	0
180	0	0	0

**ZONAL LUMEN SUMMARY**

DEGREES	LUMENS	% LAMP	% FIXTURE
0-30	1892	23.0	51.6
0-40	2709	32.9	73.9
0-60	3525	42.8	96.1
0-90	2668	44.5	100.0
90-120	0.0	0.0	0.0
90-150	0.0	0.0	0.0
90-180	0.0	0.0	0.0
0-180	3668	44.5	100.0

Luminaire Output = 3668.3  
 Luminaire Efficacy = 58.0 lm/W

**SPACING CRITERION**

ALONG	ACROSS
1.04	0.69

This Space is intentionally left blank.

This Space is intentionally left blank.

This Space is intentionally left blank.

