



RECESSED LED

GHL310 (1X4) SERIES

HINGE AND LATCH DOOR FRAME GRID LUMINAIRE

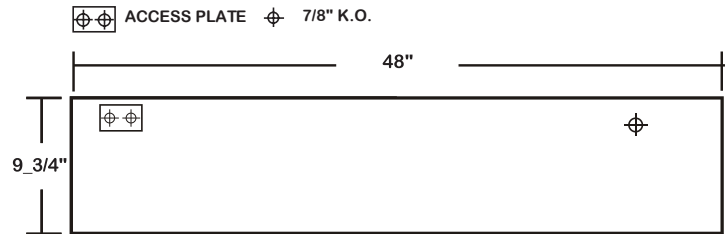
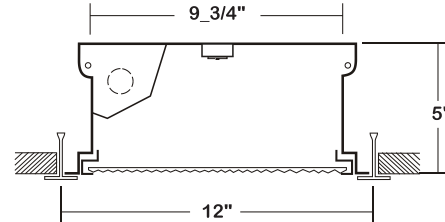
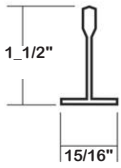


JOB	
TYPE	
DATE	

WWW.LALIGHTING.COM
626-454-8300

RECESSED MOUNTED LED LUMINAIRE FOR INVERTED T-BAR CEILINGS

DIMENSIONS



APPLICATIONS

- Commercial

FEATURES

- 0-10V dimming driver standard ([See DRIVER OPTIONS for other dimming types](#))
- Supports California Title 24 compliance

OPTIONS

- Full customization available upon request
- Additional lumen packages and color temperatures available
- Wireless control options available ([See SENSOR OPTIONS for wireless controls](#))
- Variety of lenses available ([See OPTICAL OPTIONS for lenses](#))
- Emergency battery pack available ([See DRIVER OPTIONS for emergency battery pack options](#))
- Tamper proof screws available

SPECIFICATIONS

CONSTRUCTION

- 22 ga. cold rolled steel housing (20 ga. housing available as specified)
- 20 ga. cold rolled steel door frame (extruded aluminum in various finishes available) secured by T-hinges and positive spring loaded latches
- One way polyurethane gasket (additional options available)

FINISH

- Baked white polyester finish (powder coated finish available) / minimum reflectance 86%
- Door frame: painted after fabrication

OPTICAL

- Clear prismatic acrylic lens

ELECTRICAL

- High efficiency drivers coupled with long-life LEDs
- Service life tested at 50,000 hours (L70)
- Universal voltage 120V through 277V (347V / 480V available)
- Power Factor (PF) ≥ 0.9
- Total Harmonic Distortion (THD) $\leq 20\%$

LISTING

- UL USA and Canada listed / suitable for damp locations

WARRANTY

- 5-year limited warranty



Los Angeles Lighting Mfg. Co.
Headquarters
10141 Olney Street
El Monte, CA 91731
Made in the USA

Contact Us
T: 626-454-8300
F: 626-454-8399
www.lalighting.com



Due to continued product improvements and enhancements, Los Angeles Lighting Manufacturing Company reserves the right to alter specifications, dimensions, data, and/or materials without notice. Please visit our website to view the most current information.



MADE IN THE U.S.A.
Revised 10/31/19
WARNING

GHL310 SERIES HINGE AND LATCH DOOR FRAME LUMINAIRE LED RECESSED

ORDERING INFORMATION

EXAMPLE: GHL310-4-4L-FSW-PA-TP-BPL10-1DRDM-UNV-1/840

SERIES	LED LUMEN PACKAGE	EFFICACY	NOMINAL LENGTH	DOOR FRAME	OPTICAL	MECHANICAL	ELECTRICAL	DRIVER	VOLTAGE	# OF LED ROW	CRI / CCT
GHL310			4L					DRDM	UNV	1	
GHL310 Hinge and Latch Door Frame Grid LED Luminaire	2 Nom. 2000 Lumens 4 Nom. 4000 Lumens 6 Nom. 6000 Lumens 8 Nom. 8000 Lumens 12 Nom. 12000 Lumens *Additional Lumen Packages Available	(Blank) Standard HE High Efficacy (Only 2000 / 4000 / 6000 / 12000 lumens Systems)	4L 1X4	FSW Flat Steel White Enamel See DOOR FRAME for Options	PA Clear Prismatic Acrylic PA2 Clear Prismatic Acrylic 0.125 FPA2 Frosted Prismatic Acrylic 0.125 FFA Frosted Flat Acrylic See OPTICAL OPTIONS for Options	TP Tamper Proof Screws (Hex Socket with Post) GSKNx Neoprene Gasket See GASKET for Options *Leave Blank if Not Specified Additional Mechanical Options	BPL10 Emergency Battery Pack, Constant 10W Nom. 1500 lm See BATTERY PACK OPTIONS for Options WLC(LED RU) EnOcean Wireless Control See SENSOR OPTIONS for Options *Leave Blank if Not Specified Additional Electrical Options	DRDM 0-10V One Dimming Driver See DRIVER OPTIONS for Options	UNV 120V-277V See DRIVER OPTIONS for Options	1 One LED Row	830 80+CRI / 3000K Color Temp. 835 80+CRI / 3500K Color Temp. 840 80+CRI / 4000K Color Temp. 850 80+CRI / 5000K Color Temp. *Additional Color Temp. Available

SYSTEM DATA

THESE ARE THE MOST POPULAR LUMEN PACKAGES. PLEASE CONSULT FACTORY FOR ADDITIONAL SYSTEM DATA.

LED LUMEN PACKAGE	NORMAL AMBIENT TEMPERATURE PRODUCT CODE	DELIVERED LUMENS	SYSTEM WATTS	LUMINAIRE EFFICACY	AMBIENT TEMP.	FLUORESCENT EQUIVALENT	IES FILES
2000 Lumens (Nominal)	GHL310-2-4L-FSW-PA-1DRDM-UNV-1/840	1669 lm	15.7 W	106.1 lm/W	-20°C / 35°C	1-F32T8	*
4000 Lumens (Nominal)	GHL310-4-4L-FSW-PA-1DRDM-UNV-1/840	3188 lm	33.3 W	95.6 lm/W	-20°C / 35°C	2-F32T8, 1-F54T5HO	*
6000 Lumens (Nominal)	GHL310-6-4L-FSW-PA-1DRDM-UNV-1/840	4556 lm	52.3 W	87.1 lm/W	-20°C / 35°C	3-F32T8	*
8000 Lumens (Nominal)	GHL310-8-4L-FSW-PA-1DRDM-UNV-1/840	5949 lm	49.7 W	119.7 lm/w	-20°C / 35°C	4-F32T8, 2-F54T5HO	LA-T3345
12000 Lumens (Nominal)	GHL310-12-4L-FSW-PA-1DRDM-UNV-1/840	9112 lm	104.6 W	87.1 lm/W	-20°C / 35°C	6-F32T8, 3-F54T5HO	*

LED LUMEN PACKAGE	NORMAL AMBIENT TEMPERATURE (HIGH EFFICACY) PRODUCT CODE	DELIVERED LUMENS	SYSTEM WATTS	LUMINAIRE EFFICACY	AMBIENT TEMP.	FLUORESCENT EQUIVALENT	IES FILES
2000 Lumens (Nominal)	GHL310-2HE-4L-FSW-PA-1DRDM-UNV-1/840	1607 lm	12.0 W	133.5 lm/W	-20°C / 35°C	1-F32T8	*
4000 Lumens (Nominal)	GHL310-4HE-4L-FSW-PA-1DRDM-UNV-1/840	3164 lm	24.8 W	127.5 lm/W	-20°C / 35°C	2-F32T8, 1-F54T5HO	*
6000 Lumens (Nominal)	GHL310-6HE-4L-FSW-PA-1DRDM-UNV-1/840	4612 lm	37.9 W	121.7 lm/W	-20°C / 35°C	3-F32T8	*
12000 Lumens (Nominal)	GHL310-12HE-4L-FSW-PA-1DRDM-UNV-1/840	9223 lm	75.8 W	121.7 lm/W	-20°C / 35°C	6-F32T8, 3-F54T5HO	*

NOTE:
System data is based on 120V input voltage. Actual performance may differ as a result of end-user environment and application.

This fixture has been tested and listed in accordance with UL Standards. L.A. Lighting certifies that it will operate safely when installed properly, and within an ambient temperature range noted in the system data table.

Additional lumen packages and color temperatures available.

PERFORMANCE DATA

VIEW PHOTOMETRICS



Los Angeles Lighting Mfg. Co.
Headquarters
10141 Olney Street
El Monte, CA 91731
Made in the USA

Contact Us
T: 626-454-8300
F: 626-454-8399
www.lalighting.com



Due to continued product improvements and enhancements, Los Angeles Lighting Manufacturing Company reserves the right to alter specifications, dimensions, data, and/or materials without notice. Please visit our website to view the most current information.



MADE IN THE U.S.A.
Revised 10/31/19
WARNING

SENSOR OPTIONS



CONTROLS AND SENSORS

WLC(LED RU) - EnOcean® LED Relay Zone Controller

- Supports a single LED fixture or multiple daisy chained LED fixtures
- Module installed inside lighting fixture

ESRPU-W-EO - EnOcean® Rocker Switch – Single – Surface Mount

- Wireless single rocker switch with mounting plate
- No batteries needed

EDRPU-W-EO - EnOcean® Rocker Switch – Double – Surface Mount

- Wireless double rocker switch with mounting plate
- No batteries needed

S3054-N300 - EnOcean® Navigan NWC 300U – Commissioning Tool

- Navigan Wireless Commissioner is used to configure EnOcean controllers & sensors
- It can be used to define link tables, change parameters/settings, and to edit & store projects
- Configuration settings can be saved and cloned to enable quick configuration
- Connectivity is through the NWC 300U USB Stick

EOSWU-W-EO - EnOcean® Occupancy Sensor – Wall Mount

- Wireless wall mounted occupancy sensor
- Solar powered - no batteries needed (coin battery operated in low light conditions)
- PIR motion sensor with both wide angle (50') and long range (100') options
- Mounting height: 6-8 feet

EOSCU-W-EO - EnOcean® Occupancy Sensor – Ceiling Mount

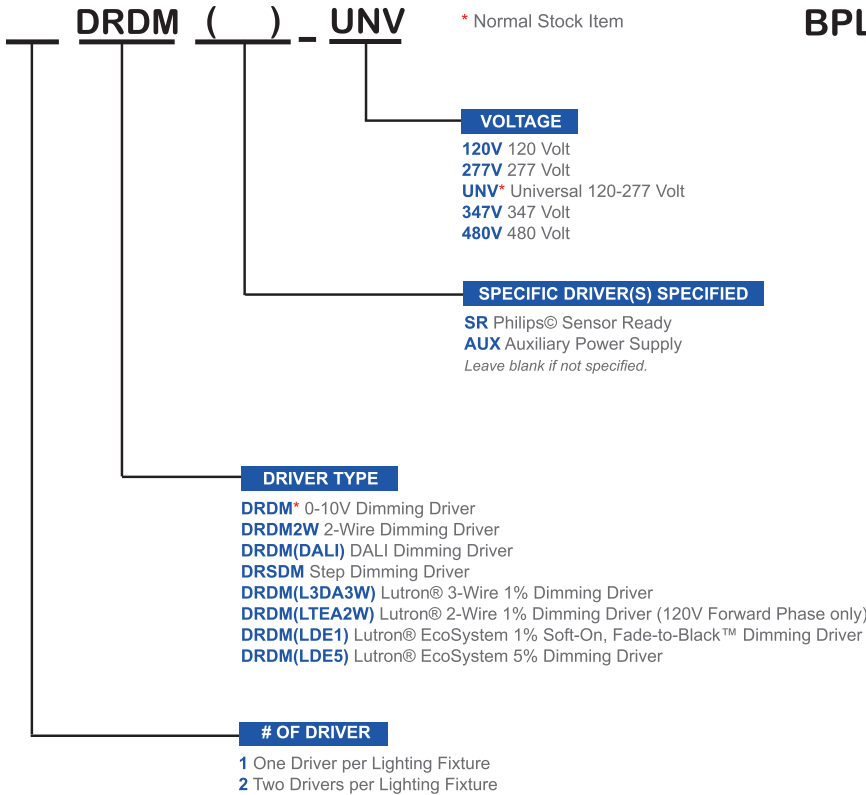
- Wireless ceiling mounted occupancy sensor
- Solar powered - no batteries needed (coin battery operated in low light conditions)
- PIR motion sensor with 360 degree viewing angle lens (34' diameter)
- Mounting height: 7-10 feet

ELLSU-W-EO - EnOcean® Light Level Sensor – Ceiling Mount

- Light Level sensor that measures and reports the level of available natural light
- Solar powered - no batteries needed (coin battery operated in low light conditions)
- Enables implementation of daylight harvesting control systems
- Mounting position: At the ceiling, close to ambient light source

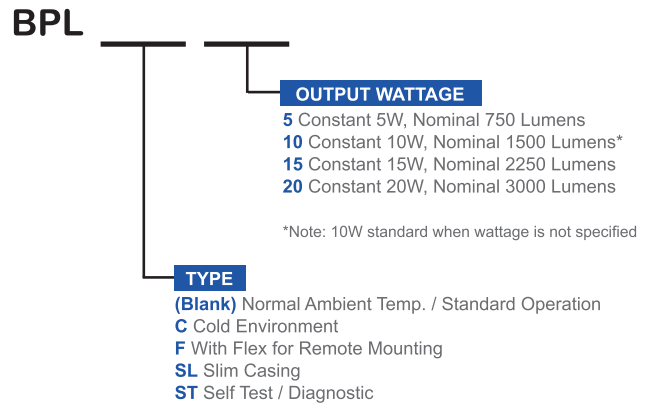
DRIVER OPTIONS

PLEASE CONSULT FACTORY TO SEE IF YOUR SELECTED DRIVER OPTION WORKS WITH THIS FIXTURE.



BATTERY PACK OPTIONS

PLEASE CONSULT FACTORY TO SEE IF YOUR SELECTED BATTERY PACK OPTION WORKS WITH THIS FIXTURE.



Los Angeles Lighting Mfg. Co.
 Headquarters
 10141 Olney Street
 El Monte, CA 91731
 Made in the USA

Contact Us
 T: 626-454-8300
 F: 626-454-8399
 www.lalighting.com



Due to continued product improvements and enhancements, Los Angeles Lighting Manufacturing Company reserves the right to alter specifications, dimensions, data, and/or materials without notice. Please visit our website to view the most current information.



MADE IN THE U.S.A.
 Revised 10/31/19
WARNING

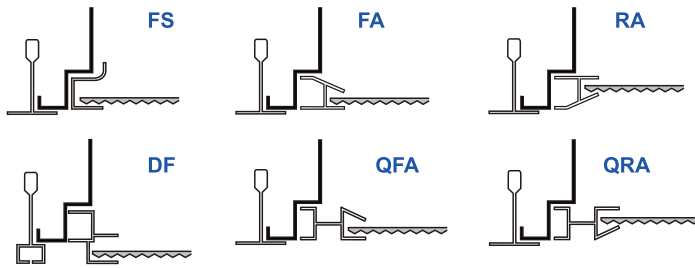
OPTICAL OPTIONS

STANDARD LENSES FOR GHL310

PA	Clear Prismatic Acrylic, No Thickness Specified, Female Prisms 3/16 Square Base
PA2	Clear Prismatic Acrylic, Nom. 0.125 OA Thickness, Female Prisms 3/16 Square Base
FFA	Flat Frosted Acrylic
FPA2	Frosted Prismatic Acrylic, Nom. 0.125 OA Thickness, Female Prisms 3/16 Square Base

DOOR FRAME

CROSS SECTION



FS W

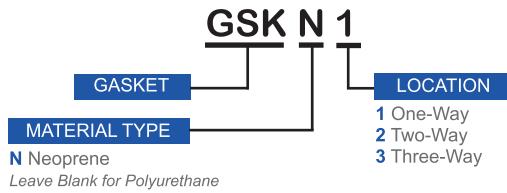
FINISHES

- W** White Enamel
- B** Black Enamel
- N** Natural Anodized Aluminum
(Only FA / RA / QFA / QRA / DF styles)

STYLES

- FS** Flat Steel
- FA** Flat Extruded Aluminum
- RA** 5/8" Regressed Extruded Aluminum
- QFA** Flat Extruded Aluminum-Black Reveal
- QRA** 1/2" Regressed Extruded Aluminum-Black Reveal
- DF** Extruded Aluminum Frame for Don Fine Line® T-Bar

GASKET



	1- WAY	2 - WAY	3 - WAY
T-BAR			
	Only with FS / FA / RA / QFA / QRA / DF style door frames.	Only with FS style door frame.	Only with FS style door frame.



Los Angeles Lighting Mfg. Co.
 Headquarters
 10141 Olney Street
 El Monte, CA 91731
 Made in the USA

Contact Us
 T: 626-454-8300
 F: 626-454-8399
 www.lalighting.com



Due to continued product improvements and enhancements, Los Angeles Lighting Manufacturing Company reserves the right to alter specifications, dimensions, data, and/or materials without notice. Please visit our website to view the most current information.

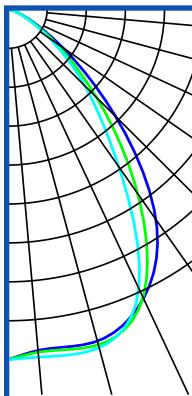
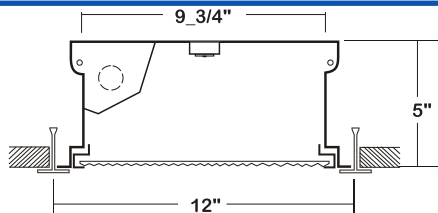


MADE IN THE U.S.A.
 Revised 10/31/19
WARNING

PHOTOMETRIC DATA - GHL310 SERIES

GHL310-8-4L-FSW-PA-1DRDM-UNV-1/840

TEST NO. = LA-T3345
 LED TYPE = 40 LED MODULE
 NO. OF MODULE = 2
 SYSTEM WATT (W) = 49.7
 CRI = >80
 L70(Hrs.) = 50,000
 PHOTOMETRY TYPE = C



CANDLEPOWER

ANGLE	END	45	CROSS
0	3500	3500	3500
5	3507	3556	3500
15	3473	3504	3522
25	3237	3219	3077
35	2556	2235	1924
45	1487	1226	1064
55	641	556	502
65	216	202	180
75	61	57	51
85	7.3	6.7	5.8
90	0.3	0.2	0.1
95	0	0	0
105	0	0	0
115	0	0	0
125	0	0	0
135	0	0	0
145	0	0	0
155	0	0	0
165	0	0	0
175	0	0	0
180	0	0	0

ZONAL LUMEN SUMMARY

DEGREES	LUMENS	% LAMP	% FIXTURE
0-30	2807	35.1	47.2
0-40	4210	52.7	70.8
0-60	5685	71.1	95.6
0-90	5948	74.4	100.0
90-120	0	0.0	0.0
90-150	0	0.0	0.0
90-180	0	0.0	0.0
0-180	5948	74.4	100.0

Luminaire Output = 5948.1 lm
 Luminaire Efficacy = 119.7 lm/W

SPACING CRITERION

ALONG	ACROSS
1.21	1.11

