



# WRAPAROUND LED

## WHO300 (4FT) SERIES (8' AVAILABLE)

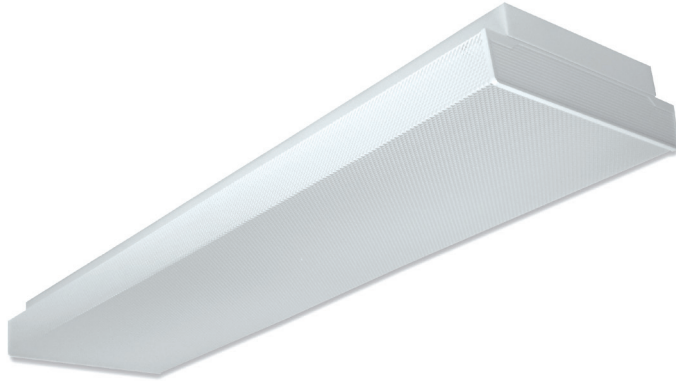
HIGH IMPACT WRAPAROUND LUMINAIRE

DATE	
JOB	

WWW.LALIGHTING.COM  
626-454-8300

### APPLICATIONS

COMMERCIAL, CLASSROOM



### SPECIFICATIONS

#### FEATURES

- Surface / suspension / pendant mounted LED luminaire
- 0-10V dimming driver standard (other dimming types available)
- Controls and sensors available
- Wireless control options (Lutron, EnOcean, ZigBee, etc.)
- Supports California Title 24 compliance
- Suitable for damp locations
- Additional lumen packages and color temperatures available
- Full customization available upon request

#### CONSTRUCTION

- 22 ga. cold rolled steel welded housing
- Canopy suspension system available

#### OPTICAL

- High impact clear prismatic acrylic lens (minimum 0.125 thickness)
- Lens secured by spring loaded barrel latches

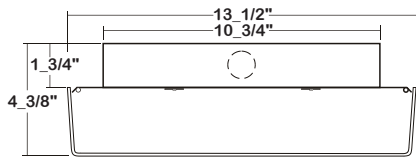
#### ELECTRICAL

- High efficiency drivers coupled with long-life LEDs
- Service life greater than 50,000 hours (L70)
- Universal voltage 120V through 277V (347V / 480V available)
- Emergency battery pack available

#### FINISH

- Baked white powder coated finish
- Painted after fabrication
- Minimum reflectance 90%

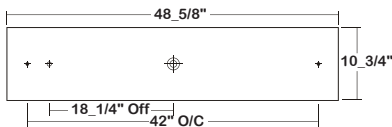
### DIMENSIONS



✦ 11/16" STEM MTG. K.O.

✦ 7/8" OFFSET K.O.

✦ 2" K.O.



### CERTIFICATIONS



### ORDERING INFORMATION

EXAMPLE: WHO300-4-4L-DRP3-BPL1.5-DRDM-UNV-2/840

SERIES	LED LUMEN PACKAGE	NOMINAL LENGTH	OPTICAL	ELECTRICAL	DRIVER	VOLTAGE	# OF LED ROW	CRI / CCT
WHO300		4L				UNV	2	
WHO300 High Impact Wraparound LED Luminaire	4 Nom. 4000 Lumens 6 Nom. 6000 Lumens 8 Nom. 8000 Lumens <i>*Additional Lumen Packages Available</i>	4L 4'	DRP3 High Impact Clear Prismatic Acrylic Min. 0.125 Thickness	BPL1.5 Emergency Battery Pack  SDxx Step Dimming Control  *Leave Blank if Not Specified  <i>Additional Electrical Options</i>	DRDM 0-10V Dimming Driver  <i>Additional Driver Options</i>	UNV 120V-277V  <i>*Additional Voltages Available</i>	2 Two LED Rows	835 80+CRI / 3500K Color Temp.  840 80+CRI / 4000K Color Temp.  850 80+CRI / 5000K Color Temp.  <i>*Additional Color Temp. Available</i>



Los Angeles Lighting Mfg. Co.

Headquarters  
10141 Olney Street  
El Monte, CA 91731  
Made in the USA

Contact Us  
T: 626-454-8300  
F: 626-454-8399  
www.lalighting.com

Due to continued product improvements and enhancements, Los Angeles Lighting Manufacturing Company reserves the right to alter specifications, dimensions, data, and/or materials without notice. Please visit our website to view the most current information.

Revised 08-15-17

**SYSTEM DATA**

NOMINAL SIZE	LED LUMEN PACKAGE	OPTICAL OPTION	CRI / CCT	DELIVERED LUMENS	SYSTEM WATTS	LUMINAIRE EFFICACY	FLUORESCENT / HID EQUIVALENT	IES FILES
4'	4000 lm	DRP3	840	3973.7 lm	31.3 W	127.0 lm/W	2-F32T8, 1-F54T5HO	<a href="#">LA-T3024</a>
	6000 lm	DRP3		5826.6 lm	47.5 W	122.7 lm/W	3-F32T8	<a href="#">LA-T3025</a>
	8000 lm	DRP3		7592.0 lm	64.8 W	117.2 lm/W	4-F32T8, 2-F54T5HO, 175 W (MH)	<a href="#">LA-T3026</a>

**NOTE:**  
 System data above is based on 120V input voltage.  
 Actual performance may differ as a result of end-user environment and application.  
 This fixture has been tested and listed in accordance with UL Standards. L.A. Lighting certifies that it will operate safely when installed properly, and within an ambient temperature range from -20°C to 40°C.  
 Additional lumen packages and color temperatures available.

**ACCESSORIES**



**433B**

- Blank canopy with cable
- No power cord
- Cable length 48" and 96"
- Max. weight 196 lbs. per set

**433B - 48 W**

**COLOR**

- W** White Standard
- B** Black

**CABLE LENGTH**

48" and 96" Standard  
 (other lengths as specified)



**444F**

- Feed-in canopy with straight cord
- Includes power cord
- Cable length 48" and 96"
- Max. weight 196 lbs. per set

**444F-48SW-2C**

**# OF CIRCUIT**

- 2C** Two Circuits
- LV** 0-10V Dimming  
 Leave blank for one circuit

**COLOR**

- W** White Standard
- B** Black

**CORD TYPE**

- S** Straight Cord

**CABLE LENGTH**

48" and 96" Standard  
 (other lengths as specified)



**Los Angeles Lighting Mfg. Co.**

Headquarters  
 10141 Olney Street  
 El Monte, CA 91731  
 Made in the USA

Contact Us  
 T: 626-454-8300  
 F: 626-454-8399  
 www.lalighting.com

Due to continued product improvements and enhancements, Los Angeles Lighting Manufacturing Company reserves the right to alter specifications, dimensions, data, and/or materials without notice. Please visit our website to view the most current information.