



WRAPAROUND

WHO300 (8FT) SERIES (4' AVAILABLE)

HIGH IMPACT WRAPAROUND LUMINAIRE

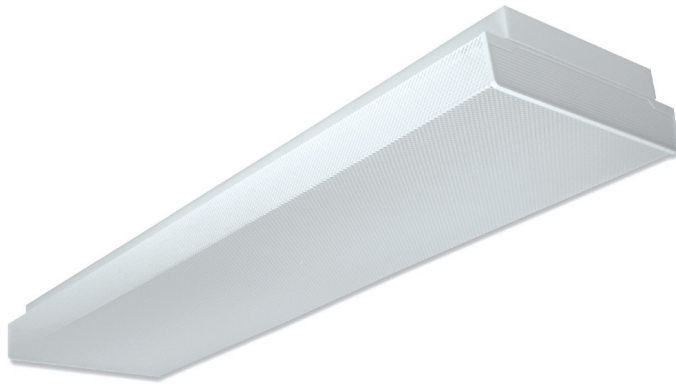


DATE	
JOB	

WWW.LALIGHTING.COM
626-454-8300

APPLICATIONS

COMMERCIAL, CLASSROOM



SPECIFICATIONS

FEATURES

- Surface / suspension / pendant mounted LED luminaire
- 0-10V dimming driver standard (other dimming types available)
- Controls and sensors available
- Wireless control options (Lutron, EnOcean, ZigBee, etc.)
- Supports California Title 24 compliance
- Suitable for damp locations
- Additional lumen packages and color temperatures available
- Full customization available upon request

CONSTRUCTION

- 22 ga. cold rolled steel welded housing
- Canopy suspension system available

OPTICAL

- High impact clear prismatic acrylic lens (minimum 0.125 thickness)
- Lens secured by spring loaded barrel latches

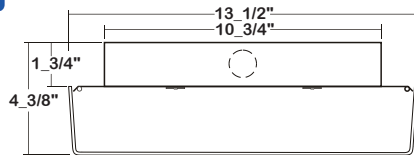
ELECTRICAL

- High efficiency drivers coupled with long-life LEDs
- Service life greater than 50,000 hours (L70)
- Universal voltage 120V through 277V (347V / 480V available)
- Emergency battery pack available

FINISH

- Baked white powder coated finish
- Painted after fabrication
- Minimum reflectance 90%

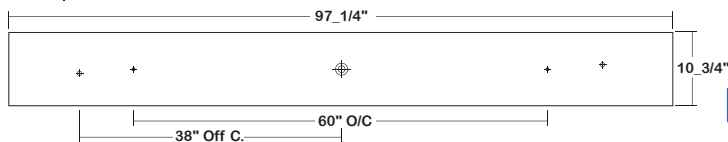
DIMENSIONS



± 11/16" STEM MTG. K.O.

± 7/8" OFFSET K.O.

± 2" K.O.



CERTIFICATIONS



ORDERING INFORMATION

EXAMPLE: WHO300-8-8L-DRP3-BPL1.5-DRDM-UNV-2/840

SERIES	LED LUMEN PACKAGE	NOMINAL LENGTH	OPTICAL	ELECTRICAL	DRIVER	VOLTAGE	# OF LED ROW	CRI / CCT
WHO300		8L				UNV	2	
WHO300 High Impact Wraparound LED Luminaire	8 Nom. 8000 Lumens 12 Nom. 12000 Lumens 16 Nom. 16000 Lumens <i>*Additional Lumen Packages Available</i>	8L 8'	DRP3 High Impact Clear Prismatic Acrylic Min. 0.125 Thickness	BPL1.5 Emergency Battery Pack MS Motion Sensor SDxx Step Dimming Control <small>*Leave Blank if Not Specified</small> <i>Additional Motion Sensor Options</i> <i>Additional Electrical Options</i>	DRDM 0-10V Dimming Driver <i>Additional Driver Options</i>	UNV 120V-277V <small>*Additional Voltages Available</small>	2 Two LED Rows	835 80+CRI / 3500K Color Temp. 840 80+CRI / 4000K Color Temp. 850 80+CRI / 5000K Color Temp. <small>*Additional Color Temp. Available</small>



Los Angeles Lighting Mfg. Co.

Headquarters
10141 Olney Street
El Monte, CA 91731
Made in the USA

Contact Us
T: 626-454-8300
F: 626-454-8399
www.lalighting.com

Due to continued product improvements and enhancements, Los Angeles Lighting Manufacturing Company reserves the right to alter specifications, dimensions, data, and/or materials without notice. Please visit our website to view the most current information.

Revised 11-07-17

SYSTEM DATA

NOMINAL SIZE	LED LUMEN PACKAGE	OPTICAL OPTION	CRI / CCT	DELIVERED LUMENS	SYSTEM WATTS	LUMINAIRE EFFICACY	FLUORESCENT EQUIVALENT	IES FILES
8'	8000 lm	DRP3	840	7998.9 lm	61.5 W	130.1 lm/W	4-F32T8, 2-F54T5HO	LA-T3027
	12000 lm	DRP3		11730.4 lm	93.4 W	125.6 lm/W	6-F32T8	LA-T3028
	16000 lm	DRP3		14219.3 lm	107.6 W	132.1 lm/W	8-F32T8, 4-F54T5HO	LA-T3029

NOTE:

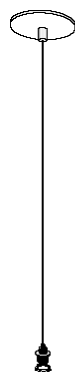
System data above is based on 120V input voltage.

Actual performance may differ as a result of end-user environment and application.

This fixture has been tested and listed in accordance with UL Standards. L.A. Lighting certifies that it will operate safely when installed properly, and within an ambient temperature range from -20°C to 40°C.

Additional lumen packages and color temperatures available.

ACCESSORIES



433B

- Blank canopy with cable
- No power cord
- Cable length 48" and 96"
- Max. weight 196 lbs. per set

433B - 48 W

COLOR
W White Standard
B Black

CABLE LENGTH
 48" and 96" Standard
 (other lengths as specified)



444F

- Feed-in canopy with straight cord
- Includes power cord
- Cable length 48" and 96"
- Max. weight 196 lbs. per set

444F-48SW-2C

OF CIRCUIT
2C Two Circuits
LV 0-10V Dimming
 Leave blank for one circuit

COLOR
W White Standard
B Black

CORD TYPE
S Straight Cord

CABLE LENGTH
 48" and 96" Standard
 (other lengths as specified)



Los Angeles Lighting Mfg. Co.

Headquarters
 10141 Olney Street
 El Monte, CA 91731
 Made in the USA

Contact Us
 T: 626-454-8300
 F: 626-454-8399
 www.lalighting.com

Due to continued product improvements and enhancements, Los Angeles Lighting Manufacturing Company reserves the right to alter specifications, dimensions, data, and/or materials without notice. Please visit our website to view the most current information.