



VAPOR TIGHT LED

CIT202 (4FT) SERIES (2' AVAILABLE)

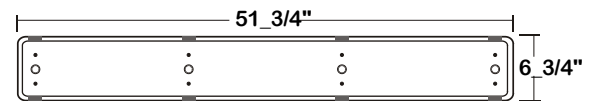
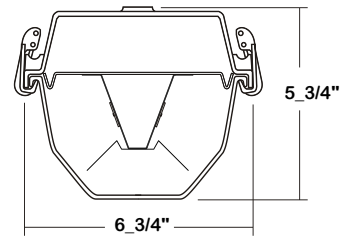
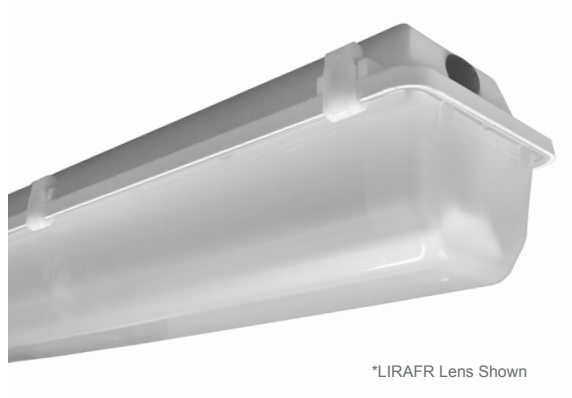
PARKING STRUCTURE FULLY ENCLOSED IMPACT RESISTANT VAPOR TIGHT GASKETED LUMINAIRE

DATE	
JOB	

WWW.LALIGHTING.COM
626-454-8300

PARKING STRUCTURE LED LUMINAIRE SURFACE / SUSPENSION MOUNTED VAPOR TIGHT GASKETED

DIMENSIONS



APPLICATIONS

- Parking Structure, Commercial, Where Wide Distribution is Desired

FEATURES

- 0-10V dimming driver standard (See *DRIVER OPTIONS* for other dimming types)
- Supports California Title 24 compliance
- Safety strap attached to snap-on gear tray

OPTIONS

- Wet location available
- Full customization available upon request
- Additional lumen packages and color temperatures available
- Controls and sensors available (See *SENSOR OPTIONS* for controls and sensors)
- Wireless control options available (See *SENSOR OPTIONS* for wireless controls)
- Emergency battery pack available (See *BATTERY PACK OPTIONS* for battery pack options)
- Stainless steel latches available
- Tamper proof screws available
- Watertight HUB available

SPECIFICATIONS

CONSTRUCTION

- IP65 / IP66 / IP67 / NEMA 4x Rated Enclosure
- 22 ga. cold rolled steel internal snap-on gear tray / cover
- Fiberglass housing with poured in place polyurethane gasket
- Lens secured to fiberglass housing by polycarbonate latches

FINISH

- Gear Tray - baked white polyester finish (powder coated finish available) / minimum reflectance 86%

OPTICAL

- Deep impact resistant smooth frosted acrylic lens standard

ELECTRICAL

- High efficiency drivers coupled with long-life LEDs
- Service life tested at 50,000-51,000 hours (L70), 16,000 hours (L90)
- Universal voltage 120V through 277V (347V / 480V available)
- Power Factor (PF) ≥ 0.9
- Total Harmonic Distortion (THD) $\leq 20\%$

LISTING

- UL USA and Canada listed / suitable for damp locations / wet location available

WARRANTY

- 5-year limited warranty



Los Angeles Lighting Mfg. Co.
Headquarters
10141 Olney Street
El Monte, CA 91731
Made in the USA

Contact Us
T: 626-454-8300
F: 626-454-8399
www.lalighting.com



Due to continued product improvements and enhancements, Los Angeles Lighting Manufacturing Company reserves the right to alter specifications, dimensions, data, and/or materials without notice. Please visit our website to view the most current information.

MADE IN THE U.S.A.

Revised 10-26-18

WARNING

ORDERING INFORMATION

EXAMPLE: CIT202-4-4L-LIRAFR-WL-BPL10-1DRDM-UNV-2/840

SERIES	LED LUMEN PACKAGE	EFFICACY	NOMINAL LENGTH	OPTICAL	MECHANICAL	ELECTRICAL	DRIVER	VOLTAGE	# OF LED ROW	CRI / CCT
CIT202			4L	LIRAFR			1DRDM	UNV	2	
CIT202 Parking Structure Fully Enclosed Impact Resistant Vapor Tight Gasketed LED Luminaire (Normal Ambient Temperature Version)	4 Nom. 4000 Lumens 6 Nom. 6000 Lumens 8 Nom. 8000 Lumens *Additional Lumen Packages Available	(Blank) Standard HE High Efficacy	4L 4'	LIRAFR Deep Impact Resistant Smooth Frosted Acrylic Lens	WL Wet Location (2 SSMB mounting brackets & 1 watertight hub provided) WTHUB Watertight HUB (1 per fixture) SSL Stainless Steel Latches TP Stainless Steel Tamper Proof Screws *Leave Blank if Not Specified	BPL10 Emergency Battery Pack Constant 10W Nom. 1500 lm <i>See BATTERY PACK OPTIONS for Options</i> MSxx Motion Sensor WLC(LED RU) Wireless Control <i>See SENSOR OPTIONS for Options</i> *Leave Blank if Not Specified	1DRDM 0-10V One Dimming Drive <i>See DRIVER OPTIONS for Options</i>	UNV 120V-277V <i>See DRIVER OPTIONS for Options</i>	2 Two LED Rows	830 80+CRI / 300K Color Temp. 835 80+CRI / 3500K Color Temp. 840 80+CRI / 4000K Color Temp. 850 80+CRI / 5000K Color Temp. *Additional Color Temp. Available

SYSTEM DATA

THESE ARE THE MOST POPULAR LUMEN PACKAGES. PLEASE CONSULT FACTORY FOR ADDITIONAL SYSTEM DATA.

LED LUMEN PACKAGE	NORMAL AMBIENT TEMPERATURE PRODUCT CODE	DELIVERED LUMENS	SYSTEM WATTS	LUMINAIRE EFFICACY	AMBIENT TEMP.	FLUORESCENT EQUIVALENT	IES FILES
4000 Lumens (Nominal)	CIT202-4-4L-LIRAFR-1DRDM-UNV-2/840 *	3545 lm	29.0 W	122.1 lm/W	-20°C / 35°C	2-F32T8, 1-F54T5HO	*
	CIT202-4-4L-LIRAFR-1DRDM-UNV-2/850 *	3591 lm	28.8 W	124.6 lm/W	-20°C / 35°C		*
6000 Lumens (Nominal)	CIT202-6-4L-LIRAFR-1DRDM-UNV-2/840 *	5364 lm	44.6 W	120.1 lm/W	-20°C / 35°C	3-F32T8	*
	CIT202-6-4L-LIRAFR-1DRDM-UNV-2/850 *	5428 lm	44.3 W	122.6 lm/W	-20°C / 35°C		*
8000 Lumens (Nominal)	CIT202-8-4L-LIRAFR-1DRDM-UNV-2/840 *	7212 lm	63.8 W	113 lm/W	-20°C / 35°C	4-F32T8, 2-F54T5HO	LA-T3200
	CIT202-8-4L-LIRAFR-1DRDM-UNV-2/850 *	7275 lm	63.3 W	115 lm/W	-20°C / 35°C		*

LED LUMEN PACKAGE	NORMAL AMBIENT TEMPERATURE (HIGH EFFICACY) PRODUCT CODE	DELIVERED LUMENS	SYSTEM WATTS	LUMINAIRE EFFICACY	AMBIENT TEMP.	FLUORESCENT EQUIVALENT	IES FILES
4000 Lumens (Nominal)	CIT202-4HE-4L-LIRAFR-1DRDM-UNV-2/840	3464 lm	25.4 W	136.4 lm/W	-20°C / 35°C	2-F32T8, 1-F54T5HO	*
6000 Lumens (Nominal)	CIT202-6HE-4L-LIRAFR-1DRDM-UNV-2/840	5192 lm	38.5 W	134.9 lm/W	-20°C / 35°C	3-F32T8	*
8000 Lumens (Nominal)	CIT202-8HE-4L-LIRAFR-1DRDM-UNV-2/840	6896 lm	51.8 W	133.0 lm/W	-20°C / 35°C	4-F32T8, 2-F54T5HO	*

NOTE: System data is based on 120V input voltage. DLC system data * based on DLC testing parameters. Actual performance may differ as a result of end-user environment and application.



This fixture has been tested and listed in accordance with UL Standards. L.A. Lighting certifies that it will operate safely when installed properly, and within an ambient temperature range noted in the system data table.

Additional lumen packages and color temperatures available.

Due to constant updates on this product, please visit the [DLC QPL Website](#) for the most accurate system data and information.

PERFORMANCE DATA

[VIEW PHOTOMETRICS](#)



Los Angeles Lighting Mfg. Co.
Headquarters
10141 Olney Street
El Monte, CA 91731
Made in the USA

Contact Us
T: 626-454-8300
F: 626-454-8399
www.lalighting.com



Due to continued product improvements and enhancements, Los Angeles Lighting Manufacturing Company reserves the right to alter specifications, dimensions, data, and/or materials without notice. Please visit our website to view the most current information.

MADE IN THE U.S.A.

Revised 10-26-18
WARNING

SENSOR OPTIONS**DRY AND DAMP LOCATIONS - HIGH / LOW AISLE MOUNTING APPLICATIONS - END MOUNT****MS - Motion Sensor**

- Turns light ON/OFF based on motion detection
- Fixture mounting height 8-45'
- Universal Voltage (120V-277V)
- 480V available

MSSD - Motion Sensor – Step Dimming

- Step-dims light to desired preset level (based on motion detection)
- Used in conjunction with 0-10V Ballast/Driver
- Fixture mounting height 8-45'
- Universal Voltage (120V-277V)

MSPC - Motion Sensor & Photocell

- Holds lights OFF when sufficient daylight is present regardless of motion detection
- Fixture mounting height 8-45'
- Universal Voltage (120V-277V)

MSPCD(ADC) - Motion Sensor & PhotoCell Dimming (Auto Dim Control)

- Variably dims output to desired preset footcandle level through photocell ON/OFF with motion detection
- Used in conjunction with 0-10V Ballast/Driver
- Fixture mounting height 8-45'
- Universal Voltage (120V-277V)

MSPCD(ANL) - Motion Sensor & Photocell Dimming (Auto Night Light)

- Variably dims output to desired footcandles through photocell
- Low setting when unoccupied (full on with motion)
- For 24 hour use
- Used in conjunction with 0-10V Ballast/Driver
- Fixture mounting height 8-45'
- Universal Voltage (120V-277V)

MSPCDR - Motion Sensor & Photocell Dimming (Setup with Remote Control)

- Field adjustable dimming sensor capabilities:
 - Step Dim (HIGH/LOW output)
 - Auto Dim Control (dim to desired footcandles, ON/OFF with motion)
 - Auto Night Light (dim to desired footcandles, LOW without motion)
- Used in conjunction with 0-10V dimming Ballast /Driver
- Holds lights OFF when sufficient daylight is present regardless of motion detection
- Adjustable ramp up and fade down time
- Fixture mounting height 8-40'
- Universal Voltage (120V-277V)
- Remote setup and adjustment with handheld wireless tool (sold separately)

PCS - Photocell Sensor

- Turns light ON/OFF based on light levels
- Fixture mounting height 8-45'
- Universal Voltage (120V-277V)

PCD - Photocell Dimming

- Dims output to desired footcandles through photocell
- Used in conjunction with 0-10V Ballast/Driver
- Fixture mounting height 8-45'
- Universal Voltage (120V-277V)

WET LOCATIONS - HIGH / LOW AISLE MOUNTING APPLICATIONS - END MOUNT**MSW(HI) - Motion Sensor Wet (HI)**

- Turns light ON/OFF based on motion detection
- High mounting height applications 15-30' / Universal Voltage (120V-277V)
- 480V available

MSPCW(HI) - Motion Sensor & Photocell Wet (HI)

- Holds lights OFF when sufficient daylight is present regardless of motion detection
- High mounting height applications 15-30' / Universal voltage (120V-277V)

MSSDW(HI) - Motion Sensor – Step Dimming Wet (HI)

- Step-dims light to desired preset level (based on motion detection)
- Used in conjunction with 0-10V Ballast/Driver
- Fixture mounting height 15-30' / Universal Voltage (120V-277V)

MSPCDW(HI) - Motion Sensor & Photocell Dimming Wet (HI)

- Field adjustable dimming sensor capabilities:
 - Step Dim (HIGH/LOW output)
 - Auto Dim Control (dim to desired footcandles, ON/OFF with motion)
 - Auto Night Light (dim to desired footcandles, LOW Setting without motion)
- Used in conjunction with 0-10V Ballast/Driver
- High mounting height applications 15-30' / Universal voltage (120V-277V)

MSPCDW(LOW) - Motion Sensor & Photocell Dimming Wet (LOW)

- Field adjustable dimming sensor capabilities:
 - Step Dim (HIGH/LOW output)
 - Auto Dim Control (dim to desired footcandles, ON/OFF with motion)
 - Auto Night Light (dim to desired footcandles, LOW SETTING without motion)
- Used in conjunction with 0-10V Ballast/Driver
- Low mounting height applications 8-15' / Universal voltage (120V-277V)

MSW(LOW) - Motion Sensor Wet (LOW)

- Turns light ON/OFF based on motion detection
- Low mounting height applications 8-15'
- Universal Voltage (120V-277V)
- 480V available

MSPCW(LOW) - Motion Sensor & Photocell Wet (LOW)

- Holds lights OFF when sufficient daylight is present regardless of motion detection
- Low mounting height applications 8-15'
- Universal voltage (120V-277V)

MSSDW(LOW) - Motion Sensor – Step Dimming Wet (LOW)

- Step-dims light to desired preset level (based on motion detection)
- Used in conjunction with 0-10V Ballast/Driver
- Fixture mounting height 8-15'
- Universal Voltage (120V-277V)

MSPCDRW - Motion Sensor & Photocell Dimming (Setup with Remote Control, Wet)

- Field adjustable dimming sensor capabilities:
 - Step Dim (HIGH/LOW output)
 - Auto Dim Control (dim to desired footcandles, ON/OFF with motion)
 - Auto Night Light (dim to desired footcandles, LOW without motion)
- Used in conjunction with 0-10V dimming Ballast /Driver
- Holds lights OFF when sufficient daylight is present regardless of motion detection
- Adjustable ramp up and fade down time
- Fixture mounting height 8-40'
- Universal Voltage (120V-277V)
- Remote setup and adjustment with handheld wireless tool (sold separately)

**CONTROLS AND SENSORS****WLC(LED RU) - EnOcean® LED Relay Zone Controller**

- Supports a single LED fixture or multiple daisy chained LED fixtures
- Module installed inside lighting fixture

ESRPU-W-EO - EnOcean® Rocker Switch – Single – Surface Mount

- Wireless single rocker switch with mounting plate
- No batteries needed

ESDRPU-W-EO - EnOcean® Rocker Switch – Double – Surface Mount

- Wireless double rocker switch with mounting plate
- No batteries needed

S3054-N30 - EnOcean® Navigan NWC 300U – Commissioning Tool

- Navigan Wireless Commissioner is used to configure EnOcean controllers & sensors
- It can be used to define link tables, change parameters/settings, and to edit & store projects
- Configuration settings can be saved and cloned to enable quick configuration
- Connectivity is through the NWC 300U USB Stick

EOSWU-W-EO - EnOcean® Occupancy Sensor – Wall Mount

- Wireless wall mounted occupancy sensor
- Solar powered - no batteries needed (coin battery operated in low light conditions)
- PIR motion sensor with both wide angle (50') and long range (100') options
- Mounting height: 6-8 feet

EOSCU-W-EO - EnOcean® Occupancy Sensor – Ceiling Mount

- Wireless ceiling mounted occupancy sensor
- Solar powered - no batteries needed (coin battery operated in low light conditions)
- PIR motion sensor with 360 degree viewing angle lens (34' diameter)
- Mounting height: 7-10 feet

EOSCU-W-EO - EnOcean® Light Level Sensor

- Light Level sensor that measures and reports the level of available natural light
- Solar powered - no batteries needed (coin battery operated in low light conditions)
- Enables implementation of daylight harvesting control systems
- Mounting position: At the ceiling, close to ambient light source

**Los Angeles Lighting Mfg. Co.**

Headquarters
10141 Olney Street
El Monte, CA 91731
Made in the USA

Contact Us
T: 626-454-8300
F: 626-454-8399
www.lalighting.com



Due to continued product improvements and enhancements, Los Angeles Lighting Manufacturing Company reserves the right to alter specifications, dimensions, data, and/or materials without notice. Please visit our website to view the most current information.

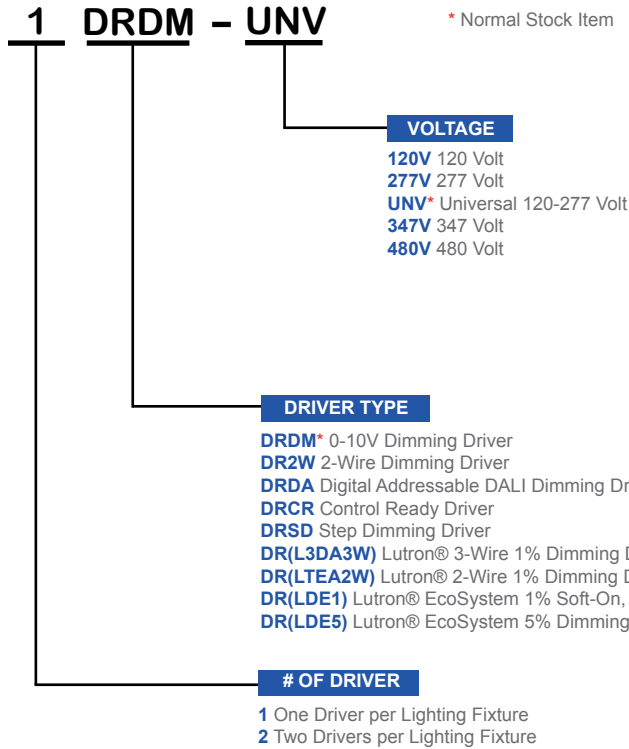
MADE IN THE U.S.A.

Revised 10-26-18

WARNING

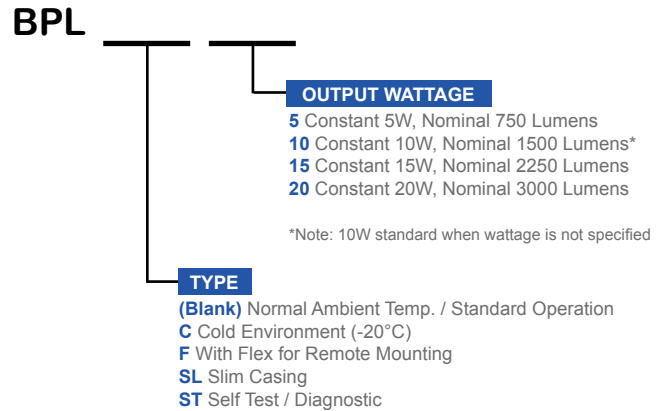
DRIVER OPTIONS

PLEASE CONSULT FACTORY TO SEE IF YOUR SELECTED DRIVER OPTION WORKS WITH THIS FIXTURE.



BATTERY PACK OPTIONS

PLEASE CONSULT FACTORY TO SEE IF YOUR SELECTED BATTERY PACK OPTION WORKS WITH THIS FIXTURE.



ACCESSORIES



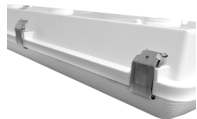
CIT2/SSMBRM

- Stainless steel mounting bracket for 3/8" threaded rods
- Corrosion resistant stainless steel mounting bracket
- Two (2) brackets per set
- Fixture snaps securely into place (mounting method does not require stud in fixture)



CIT2/SSMB

- Corrosion resistant stainless steel mounting bracket
- Two (2) brackets per set
- Fixture snaps securely into place (mounting method does not require stud in fixture)



SSL

- Stainless steel latches
- Corrosion resistant stainless steel latches
- Eight (8) latches per set



Los Angeles Lighting Mfg. Co.

Headquarters
 10141 Olney Street
 El Monte, CA 91731
 Made in the USA

Contact Us
 T: 626-454-8300
 F: 626-454-8399
 www.lalighting.com

Due to continued product improvements and enhancements, Los Angeles Lighting Manufacturing Company reserves the right to alter specifications, dimensions, data, and/or materials without notice. Please visit our website to view the most current information.

MADE IN THE U.S.A.

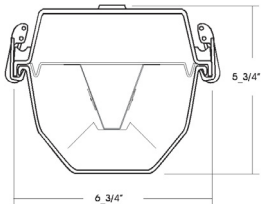
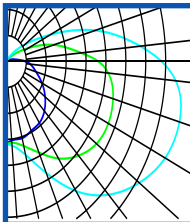
Revised 10-26-18

WARNING

PHOTOMETRIC DATA - CIT202 SERIES

CIT202-8-4L-LIRAFR-1DRDM-UNV-2/840

TEST NO.=LA-T3200
 LED TYPE=48 LED MODULE
 NO. OF MODULE=4
 SYSTEM WATT (W)=64.8
 CRI ≥ 80
 L70(Hrs.) ≥ 50,000
 PHOTOMETRY TYPE=C



CANDLEPOWER

ANGLE	END	45	CROSS
0	553	553	553
5	532	548	567
15	533	588	650
25	514	676	826
35	504	796	1063
45	471	895	1267
55	398	921	1428
65	344	986	1536
75	269	968	1570
85	210	897	1491
90	169	807	1361
95	113	659	1178
115	55	431	807
125	19	213	425
135	6	87	202
145	2	24	80
155	0	3	16
165	0	0	0
175	0	0	0
180	0	0	0

ZONAL LUMEN SUMMARY

DEGREES	LUMENS	% LAMP	% FIXTURE
0-30	531	6.2	7.6
0-40	1027	12.0	14.7
0-60	2555	29.8	36.6
0-90	5440	63.5	77.9
90-120	1421	16.5	20.3
90-150	1535	17.9	22.0
90-180	1535	17.9	22.0
0-180	6976	81.4	100.00

Luminaire Output = 6976 lumens
 Luminaire Efficacy = 107.6 lm/W

SPACING CRITERION

ALONG	ACROSS
1.40	2.80

