



RECESSED

GSL310

SERIES 2FT, 4FT
® SHALLOW DEPTH RECESSED GRID MOUNTED LUMINAIRE

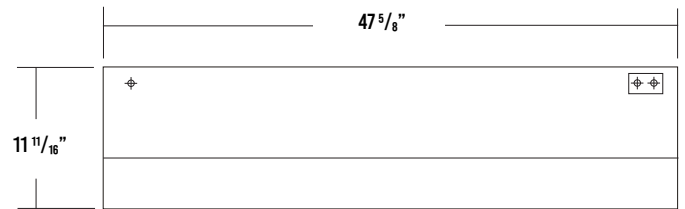
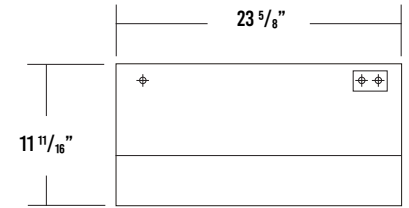
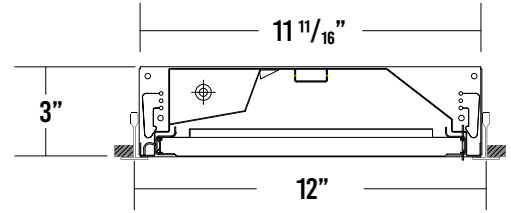
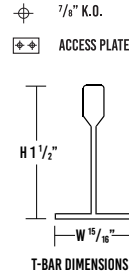


JOB	
TYPE	
DATE	

WWW.LALIGHTING.COM

TEL: 626-454-8300

DIMENSIONS



SPECIFICATIONS

CONSTRUCTION

- 22 gauge cold-rolled steel housing
- 20 gauge cold-rolled steel door frame secured by T-hinges and positive spring loaded latches
- One way polyurethane gasket

FINISH

- Baked white polyester finish
- Minimum reflectance 86%

OPTICAL

- Clear prismatic acrylic lens

ELECTRICAL

- High-efficiency drivers coupled with long-life LEDs
- Service life tested at 50,000 hours (L70)
- Universal voltage 120V through 277V (347V / 480V available)
- Power Factor (PF) ≥ 0.9
- Total Harmonic Distortion (THD) ≤ 20%

LISTING

- UL USA and Canada listed / suitable for damp locations

WARRANTY

5-Year limited warranty standard. 10-Year limited warranty also available

APPLICATIONS

- Commercial, Office

FEATURES

- 0-10V Dimming driver standard
- Supports California Title 24 compliance

OPTIONS CONTACT CUSTOMER SERVICE FOR ADDITIONAL OPTIONS

- Controls
- Lens
- Cord & plug
- Emergency battery pack
- Tunable white (2700K - 6500K)
- Customization available upon request
- 20 gauge cold-rolled steel housing
- Extruded aluminum door frame



Los Angeles Lighting Mfg. Co.

Contact Us
T: 626-454-8300
F: 626-454-8399
www.lalighting.com

10141 Olney Street
El Monte, CA 91731
Made in the USA



Due to continued product improvements and enhancements, Los Angeles Lighting Manufacturing Company reserves the right to alter specifications, dimensions, data, and/or materials without notice. Please visit our website to view the most current information.

© 2022 LOS ANGELES LIGHTING MANUFACTURING CO. ALL RIGHTS RESERVED.

Revised: 10/13/22



MADE IN THE USA
BAA Compliant

ORDERING INFORMATION

ADDITIONAL OPTIONS AVAILABLE. VISIT WWW.LALIGHTING.COM/RESOURCES FOR MORE INFORMATION

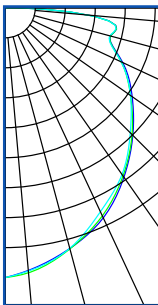
EXAMPLE: GSL310-4-4L-FSW-PA-DRDM-UNV-1/840

SERIES	NOMINAL LED LUMENS	NOMINAL LENGTH	DOOR FRAME	OPTICAL	MECHANICAL	CONTROLS	ELECTRICAL	DRIVER	VOLTAGE	# OF LED ROWS	CRI / CCT
GSL310										1	
GSL310 • 12" Wide, Shallow Depth Recessed Grid Mounted Luminaire with T-Hinge/Spring-Loaded Latch Door Frame	1 - 1000lm 2 - 2000lm 3 - 3000lm 4 - 4000lm 6 - 6000lm 8 - 8000lm High Efficacy 1HE - 1000lm 2HE - 2000lm 3HE - 3000lm	2L • 1'x2'	FSW • Flat Steel White Enamel	PA • Clear Prismatic Acrylic PA2 • Clear Prismatic Acrylic 0.125 FFWA • Flat Frosted White Acrylic FPA2 • Frosted Prismatic Acrylic Nom. 0.125	TP • Tamper Proof Screws GSKNx • Neoprene Gasket	WLC(xx) • Wireless Control	BPL1.5 • Emergency Battery Pack 1500 lm *Leave blank if not specified	DRDM • 0-10V Dimming Driver	UNV • 120V-277V 120V • 120 Volt 277V • 277 Volt 347V • 347 Volt 480V • 480 Volt	1 • 1 LED Row	830 • 80+CRI / 3000K 835 • 80+CRI / 3500K 840 • 80+CRI / 4000K 850 • 80+CRI / 5000K 8TW • 80+CRI Tunable White 2700K-6500K <i>Contact customer service for additional CRI/CCT packages, including 90CRI</i>
	2 - 2000lm 4 - 4000lm 6 - 6000lm 8 - 8000lm 12 - 12000lm 16 - 16000lm High Efficacy 2HE - 2000lm 3HE - 3000lm 4HE - 4000lm 6HE - 6000lm	4L • 1'x4'									
Standard options for GSL310 shown above. For additional options, including lumen packages, controls, lenses, switches, finishes, and more, visit www.lalighting.com/resources or contact customer service.											

PHOTOMETRIC DATA

GSL310-4-4L-FSW-DRDM-UNV-1/840

TEST NO. = LA-T3606
 LED TYPE = 48 LED MODULE
 NO. OF MODULE = 2
 SYSTEM WATT (W) = 26.7
 CRI ≥ 80
 L70(Hrs.) ≥ 50,000
 PHOTOMETRY TYPE = C



DEGREES	LUMENS	% LAMP	% FIXTURE
0-30	612	16.9	21.8
0-40	1136	27.8	35.8
0-60	2080	50.9	65.6
0-90	3159	77.3	99.6
90-120	11	0.3	0.4
90-150	11	0.3	0.4
90-180	11	0.3	0.4
0-180	3171	77.6	100.0

Luminaire Output = 3170.79 lumens
 Luminaire Efficacy = 118.76 lm/W
 Luminaire Efficiency = 77.60%

ALONG	ACROSS
1.24	1.23



Los Angeles Lighting Mfg. Co.
 Contact Us
 T: 626-454-8300
 F: 626-454-8399
www.lalighting.com
 10141 Olney Street
 El Monte, CA 91731
 Made in the USA



Due to continued product improvements and enhancements, Los Angeles Lighting Manufacturing Company reserves the right to alter specifications, dimensions, data, and/or materials without notice. Please visit our website to view the most current information.

© 2022 LOS ANGELES LIGHTING MANUFACTURING CO. ALL RIGHTS RESERVED.

Revised: 10/13/22



SYSTEM DATA

ADDITIONAL LUMEN PACKAGES AVAILABLE. CONTACT CUSTOMER SERVICE FOR MORE INFORMATION

2' - LED LUMEN PACKAGE	NORMAL AMBIENT TEMPERATURE PRODUCT CODE	DELIVERED LUMENS	SYSTEM WATTS	LUMINAIRE EFFICACY	AMBIENT TEMP.	FLUORESCENT EQUIVALENT	IES FILES
1000 Lumens (Nominal)	GSL310-1-2L-FSW-PA-DRDM-UNV-1/840	785	7.6	102.7 lm/W	-20°C / 35°C (-4°F / 95°F)	1-F17T8	*
2000 Lumens (Nominal)	GSL310-2-2L-FSW-PA-DRDM-UNV-1/840	1542	14.1	109.0 lm/W	-20°C / 35°C (-4°F / 95°F)	2-F17T8	LA-T3605
3000 Lumens (Nominal)	GSL310-3-2L-FSW-PA-DRDM-UNV-1/840	2402	22.1	106.5 lm/W	-20°C / 35°C (-4°F / 95°F)	3-F17T8	*
4000 Lumens (Nominal)	GSL310-4-2L-FSW-PA-DRDM-UNV-1/840	3126	27.3	114.4 lm/W	-20°C / 35°C (-4°F / 95°F)	4-F17T8	*
6000 Lumens (Nominal)	GSL310-6-2L-FSW-PA-DRDM-UNV-1/840	4541	39.4	115.2 lm/W	-20°C / 35°C (-4°F / 95°F)	4-F17T8	*
8000 Lumens (Nominal)	GSL310-8-2L-FSW-PA-DRDM-UNV-1/840	6131	52.3	117.1 lm/W	-20°C / 35°C (-4°F / 95°F)	4-F17T8	*

2' - LED LUMEN PACKAGE	NORMAL AMBIENT TEMPERATURE (HIGH EFFICACY) PRODUCT CODE	DELIVERED LUMENS	SYSTEM WATTS	LUMINAIRE EFFICACY	AMBIENT TEMP.	FLUORESCENT EQUIVALENT	IES FILES
1000 Lumens (Nominal)	GSL310-1HE-2L-FSW-PA-DRDM-UNV-1/840	849	7.5	113.2 lm/W	-20°C / 35°C (-4°F / 95°F)	1-F17T8	*
2000 Lumens (Nominal)	GSL310-2HE-2L-FSW-PA-DRDM-UNV-1/840	1509	12.3	122.0 lm/W	-20°C / 35°C (-4°F / 95°F)	2-F17T8	*
3000 Lumens (Nominal)	GSL310-3HE-2L-FSW-PA-DRDM-UNV-1/840	2280	18.6	122.0 lm/W	-20°C / 35°C (-4°F / 95°F)	3-F17T8	*

4' - LED LUMEN PACKAGE	NORMAL AMBIENT TEMPERATURE PRODUCT CODE	DELIVERED LUMENS	SYSTEM WATTS	LUMINAIRE EFFICACY	AMBIENT TEMP.	FLUORESCENT EQUIVALENT	IES FILES
2000 Lumens (Nominal)	GSL310-2-4L-FSW-PA-DRDM-UNV-1/840	1671	13.4	124.5 lm/W	-20°C / 35°C (-4°F / 95°F)	1-F32T8	*
4000 Lumens (Nominal)	GSL310-4-4L-FSW-PA-DRDM-UNV-1/840	3281	26.7	122.8 lm/W	-20°C / 35°C (-4°F / 95°F)	2-F32T8 1-F54T5HO	LA-T3606
6000 Lumens (Nominal)	GSL310-6-4L-FSW-PA-DRDM-UNV-1/840	5109	43.6	116.9 lm/W	-20°C / 35°C (-4°F / 95°F)	3-F32T8	*
8000 Lumens (Nominal)	GSL310-8-4L-FSW-PA-DRDM-UNV-1/840	6650	51.1	125.7 lm/W	-20°C / 35°C (-4°F / 95°F)	4-F32T8 2-F54T5HO	*
12000 Lumens (Nominal)	GSL310-12-4L-FSW-PA-DRDM-UNV-1/840	9661	74.9	128.9 lm/W	-20°C / 35°C (-4°F / 95°F)	4-F32T8 2-F54T5HO	*
16000 Lumens (Nominal)	GSL310-16-4L-FSW-PA-DRDM-UNV-1/840	13043	97.9	133.2 lm/W	-20°C / 35°C (-4°F / 95°F)	4-F32T8 2-F54T5HO	*

4' - LED LUMEN PACKAGE	NORMAL AMBIENT TEMPERATURE (HIGH EFFICACY) PRODUCT CODE	DELIVERED LUMENS	SYSTEM WATTS	LUMINAIRE EFFICACY	AMBIENT TEMP.	FLUORESCENT EQUIVALENT	IES FILES
2000 Lumens (Nominal)	GSL310-2HE-4L-FSW-PA-DRDM-UNV-1/840	1806	13.5	133.4 lm/W	-20°C / 35°C (-4°F / 95°F)	1-F32T8	*
4000 Lumens (Nominal)	GSL310-4HE-4L-FSW-PA-DRDM-UNV-1/840	3212	23.5	136.9 lm/W	-20°C / 35°C (-4°F / 95°F)	2-F32T8 1-F54T5HO	*
6000 Lumens (Nominal)	GSL310-6HE-4L-FSW-PA-DRDM-UNV-1/840	4852	36.4	133.3 lm/W	-20°C / 35°C (-4°F / 95°F)	3-F32T8	*

NOTE:
 System data is based on 120V input voltage. Actual performance may differ as a result of end-user environment and application.
 This fixture has been tested and listed in accordance with UL Standards. L.A. Lighting certifies that it will operate safely when installed properly, and within an ambient temperature range noted in the system data table.
 Additional lumen packages and color temperatures available.



Los Angeles Lighting Mfg. Co.
 Contact Us
 T: 626-454-8300
 F: 626-454-8399
 www.lalighting.com

10141 Olney Street
 El Monte, CA 91731
 Made in the USA



Due to continued product improvements and enhancements, Los Angeles Lighting Manufacturing Company reserves the right to alter specifications, dimensions, data, and/or materials without notice. Please visit our website to view the most current information.

© 2022 LOS ANGELES LIGHTING MANUFACTURING CO. ALL RIGHTS RESERVED.

Revised: 10/13/22

