



# ARCHITECTURAL

## ANG050 (2FT)

SERIES (4' AND 8' AVAILABLE)  
ARCHITECTURAL MINIATURE ANGLED LUMINAIRE

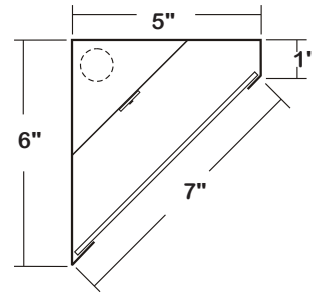
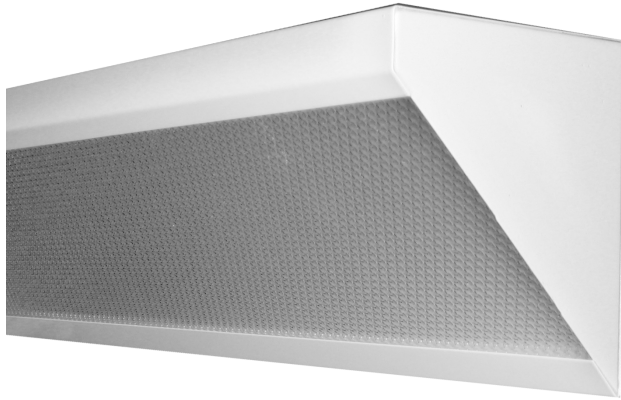


DATE	
JOB	

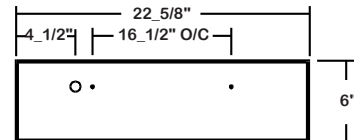
WWW.LALIGHTING.COM  
626-454-8300

### SURFACE / CORNER / WALL / CEILING MOUNTED LED LUMINAIRE

### DIMENSIONS



- 3/16" MTG. K.O.
- 7/8" K.O.



### APPLICATIONS

- Architectural, Retail, Corridor, Dormitory, Extended Care Facilities, Commercial

### FEATURES

- 0-10V dimming driver standard (See DRIVER OPTIONS for other dimming types)
- Supports California Title 24 compliance

### OPTIONS

- Full customization available upon request
- Additional lumen packages and color temperatures available
- Controls and sensors available (consult factory for sensor options)
- Wireless control options available (See SENSOR OPTIONS for wireless controls)
- Custom colors available (See CUSTOM COLORS For standard and custom options)
- Variety of lenses available (See OPTICAL OPTIONS for lens options)
- Emergency battery pack available (See BATTERY PACK OPTIONS for battery pack options)
- Tunable white available (2700K-6500K)

### SPECIFICATIONS

#### CONSTRUCTION

- 20 ga. cold rolled steel welded housing
- Frameless lift-and-shift lens

#### FINISH

- Baked white powder coated finish / welded and painted after fabrication / minimum reflectance 90%

#### OPTICAL

- Frosted flat acrylic lens

#### ELECTRICAL

- High efficiency drivers coupled with long-life LEDs
- Service life tested at 50,000 hours (L70)
- Universal voltage 120V through 277V (347V / 480V available)
- Power Factor (PF)  $\geq 0.9$
- Total Harmonic Distortion (THD)  $\leq 20\%$

#### LISTING

- UL USA and Canada listed / suitable for damp locations

#### WARRANTY

- 5-year limited warranty



**Los Angeles Lighting Mfg. Co.**  
Headquarters  
10141 Olney Street  
El Monte, CA 91731  
Made in the USA

Contact Us  
T: 626-454-8300  
F: 626-454-8399  
www.lalighting.com



Due to continued product improvements and enhancements, Los Angeles Lighting Manufacturing Company reserves the right to alter specifications, dimensions, data, and/or materials without notice. Please visit our website to view the most current information.

**MADE IN THE U.S.A.**

Revised 06-27-19

**WARNING**

**ORDERING INFORMATION**

**EXAMPLE:** ANG050-2-2L-FFA-BPL 1.5-DRDM-UNV-1/840

SERIES	LED LUMEN PACKAGE	EFFICACY	NOMINAL LENGTH	OPTICAL	ELECTRICAL	DRIVER	VOLTAGE	# OF LED ROW	CRI / CCT
<b>ANG050</b>			<b>2L</b>			<b>DRDM</b>	<b>UNV</b>	<b>1</b>	
<b>ANG050</b> Architectural Miniature Angled LED Luminaire	1 Nom. 1000 Lumens 2 Nom. 2000 Lumens 3 Nom. 3000 Lumens 4 Nom. 4000 Lumens  <b>*Additional Lumen Packages Available</b>	(Blank) Standard  <b>HE</b> High Efficacy (Only 1000 / 2000 / 3000 lumens Systems)	2L 2'	<b>FFA</b> Frosted Flat Acrylic  <b>FPA</b> Frosted Prismatic Acrylic  <b>PA</b> Clear Prismatic Acrylic  <i>See OPTICAL OPTIONS for Options</i>	<b>BPL1.5</b> Emergency Battery Pack, Nom. 1500 lm  <i>See BATTERY PACK OPTIONS for Options</i>  <b>WLC(LEDURU)</b> EnOcean Wireless Control  <i>See SENSOR OPTIONS for Options</i>  *Leave Blank if Not Specified  <i>Additional Electrical Options</i>	<b>DRDM</b> 0-10V Dimming Driver  <i>See DRIVER OPTIONS for Options</i>	<b>UNV</b> 120V-277V  <i>See DRIVER OPTIONS for Options</i>	<b>1</b> One LED Row	<b>830</b> 80+CRI / 3000K Color Temp.  <b>835</b> 80+CRI / 3500K Color Temp.  <b>840</b> 80+CRI / 4000K Color Temp.  <b>850</b> 80+CRI / 5000K Color Temp.  *Additional Color Temp. Available

**SYSTEM DATA**

**THESE ARE THE MOST POPULAR LUMEN PACKAGES. PLEASE CONSULT FACTORY FOR ADDITIONAL SYSTEM DATA.**

LED LUMEN PACKAGE	NORMAL AMBIENT TEMPERATURE PRODUCT CODE	DELIVERED LUMENS	SYSTEM WATTS	LUMINAIRE EFFICACY	AMBIENT TEMP.	FLUORESCENT EQUIVALENT	IES FILES
1000 Lumens (Nominal)	ANG050-1-2L-FFA-DRDM-UNV-1/840	876 lm	7.7 W	114.0 lm/W	-20°C / 35°C	1-F17T8	*
2000 Lumens (Nominal)	ANG050-2-2L-FFA-DRDM-UNV-1/840	1673 lm	15.7 W	106.3 lm/W	-20°C / 35°C	2-F17T8, 1-F24T5HO	<a href="#">LA-T3444</a>
3000 Lumens (Nominal)	ANG050-3-2L-FFA-DRDM-UNV-1/840	2392 lm	25.6 W	93.6 lm/W	-20°C / 35°C	3-F17T8	*
4000 Lumens (Nominal)	ANG050-4-2L-FFA-DRDM-UNV-1/840	3235 lm	25.9 W	125.0 lm/W	-20°C / 35°C	4-F17T8, 2-F24T5HO	*

LED LUMEN PACKAGE	NORMAL AMBIENT TEMPERATURE (HIGH EFFICACY) PRODUCT CODE	DELIVERED LUMENS	SYSTEM WATTS	LUMINAIRE EFFICACY	AMBIENT TEMP.	FLUORESCENT EQUIVALENT	IES FILES
1000 Lumens (Nominal)	ANG050-1HE-2L-FFA-DRDM-UNV-1/840	897 lm	6.1 W	143.3 lm/W	-20°C / 35°C	1-F17T8	*
2000 Lumens (Nominal)	ANG050-2HE-2L-FFA-DRDM-UNV-1/840	1562 lm	11.3 W	137.9 lm/W	-20°C / 35°C	2-F17T8, 1-F24T5HO	*
3000 Lumens (Nominal)	ANG050-3HE-2L-FFA-DRDM-UNV-1/840	2360 lm	18.0 W	131.3 lm/W	-20°C / 35°C	3-F17T8	*

**NOTE:**

System data is based on 120V input voltage. Actual performance may differ as a result of end-user environment and application.

This fixture has been tested and listed in accordance with UL Standards. L.A. Lighting certifies that it will operate safely when installed properly, and within an ambient temperature range noted in the system data table.

Additional lumen packages and color temperatures available.

**PERFORMANCE DATA**

[VIEW PHOTOMETRICS](#)



**Los Angeles Lighting Mfg. Co.**  
Headquarters  
10141 Olney Street  
El Monte, CA 91731  
Made in the USA  
  
Contact Us  
T: 626-454-8300  
F: 626-454-8399  
www.lalighting.com



Due to continued product improvements and enhancements, Los Angeles Lighting Manufacturing Company reserves the right to alter specifications, dimensions, data, and/or materials without notice. Please visit our website to view the most current information.

**MADE IN THE U.S.A.**

Revised 06-27-19

**WARNING**

**SENSOR OPTIONS**



**CONTROLS AND SENSORS**

**WLC(LED RU) - EnOcean® LED Relay Zone Controller**

- Supports a single LED fixture or multiple daisy chained LED fixtures
- Module installed inside lighting fixture

**ESRPU-W-EO - EnOcean® Rocker Switch – Single – Surface Mount**

- Wireless single rocker switch with mounting plate
- No batteries needed

**EDRPU-W-EO - EnOcean® Rocker Switch – Double – Surface Mount**

- Wireless double rocker switch with mounting plate
- No batteries needed

**S3054-N300 - EnOcean® Navigan NWC 300U – Commissioning Tool**

- Navigan Wireless Commissioner is used to configure EnOcean controllers & sensors
- It can be used to define link tables, change parameters/settings, and to edit & store projects
- Configuration settings can be saved and cloned to enable quick configuration
- Connectivity is through the NWC 300U USB Stick

**EOSWU-W-EO - EnOcean® Occupancy Sensor – Wall Mount**

- Wireless wall mounted occupancy sensor
- Solar powered - no batteries needed (coin battery operated in low light conditions)
- PIR motion sensor with both wide angle (50') and long range (100') options
- Mounting height: 6-8 feet

**EOSCU-W-EO - EnOcean® Occupancy Sensor – Ceiling Mount**

- Wireless ceiling mounted occupancy sensor
- Solar powered - no batteries needed (coin battery operated in low light conditions)
- PIR motion sensor with 360 degree viewing angle lens (34' diameter)
- Mounting height: 7-10 feet

**ELLSU-W-EO - EnOcean® Light Level Sensor – Ceiling Mount**

- Light Level sensor that measures and reports the level of available natural light
- Solar powered - no batteries needed (coin battery operated in low light conditions)
- Enables implementation of daylight harvesting control systems
- Mounting position: At the ceiling, close to ambient light source

**DRIVER OPTIONS**

PLEASE CONSULT FACTORY TO SEE IF YOUR SELECTED DRIVER OPTION WORKS WITH THIS FIXTURE.

**DRDM – UNV**

\* Normal Stock Item

**VOLTAGE**

- 120V 120 Volt
- 277V 277 Volt
- UNV\* Universal 120-277 Volt
- 347V 347 Volt
- 480V 480 Volt

**DRIVER TYPE**

- DRDM\* 0-10V Dimming Driver
- DRDM1 0-10V Dimming Driver, 1% Dimming
- DRDM2C 2-Channel 0-10V Dimming Driver (for Color Tunable White)
- DR2W 2-Wire Phase Dimming Driver
- DRDA Digital Addressable DALI Dimming Driver
- DRDA2C Digital Addressable DALI Type8 2-Channel Driver (for Color Tunable White)
- DRDA2.0 Digital Addressable DALI 2.0 Dimming Driver
- DRDA2.02C Digital Addressable DALI 2.0 Type8 2-Channel Driver (for Color Tunable White)
- DRSD Step Dimming Driver
- DR(LTEA2W) Lutron® 2-Wire 1% Dimming Driver (120V Forward Phase only)
- DR(LDE1) Lutron® EcoSystem 1% Soft-On, Fade-to-Black™ Dimming Driver
- DR(LDE5) Lutron® EcoSystem 5% Dimming Driver
- DR(PEQ0) Lutron® EcoSystem 0.1% Soft-On, Fade-to-Black Dimming Driver
- DR(PSQ0) Lutron® T-Series Digital 1% Dimming 2-Channel Driver (for Color Tunable White)

**# OF DRIVERS SPECIFIED**

- (Blank) Not Specified
- # Number of Drivers Specified per Lighting Fixture

**BATTERY PACK OPTIONS**

PLEASE CONSULT FACTORY TO SEE IF YOUR SELECTED BATTERY PACK OPTION WORKS WITH THIS FIXTURE.

**BPL**

**LUMEN PACKAGE**

- 0.7 Nominal 750 Lumens
- 1.5 Nominal 1500 Lumens
- 3.0 Nominal 3000 Lumens

\*Additional lumen packages available

**TYPE**

- (Blank) Normal Ambient Temp. / Standard Operation
- C Cold Environment (-20°C)
- F With Flex for Remote Mounting
- SL Slim Casing
- ST Self Test / Diagnostic

\*Additional options available



**Los Angeles Lighting Mfg. Co.**

Headquarters  
10141 Olney Street  
El Monte, CA 91731  
Made in the USA

Contact Us  
T: 626-454-8300  
F: 626-454-8399  
www.lalighting.com



Due to continued product improvements and enhancements, Los Angeles Lighting Manufacturing Company reserves the right to alter specifications, dimensions, data, and/or materials without notice. Please visit our website to view the most current information.

**MADE IN THE U.S.A.**

Revised 06-27-19

**WARNING**

**OPTICAL OPTIONS**

**STANDARD LENSES FOR ANG050**

<b>FFA</b>	Frosted Flat Acrylic, No Thickness Specified
<b>FPA</b>	Frosted Prismatic Acrylic, No Thickness Specified, Female Prisms 3/16 Square Base
<b>PA</b>	Clear Prismatic Acrylic, No Thickness Specified, Female Prisms 3/16 Square Base

[CLICK HERE FOR FULL OPTICAL OPTIONS LIST](#)

**CUSTOM COLORS**

- BLK - Matte Black
- CS - Camaro Silver
- BZ - Statuary Bronze

Variety of RAL colors & Axalta/DuPont colors available upon request.



**Los Angeles Lighting Mfg. Co.**  
 Headquarters  
 10141 Olney Street  
 El Monte, CA 91731  
 Made in the USA

Contact Us  
 T: 626-454-8300  
 F: 626-454-8399  
 www.lalighting.com



Due to continued product improvements and enhancements, Los Angeles Lighting Manufacturing Company reserves the right to alter specifications, dimensions, data, and/or materials without notice. Please visit our website to view the most current information.

**MADE IN THE U.S.A.**

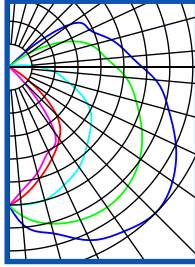
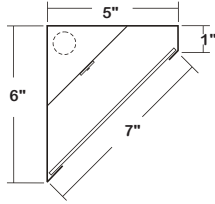
Revised 06-27-19

**WARNING**

**PHOTOMETRIC DATA - ANG050\_2FT SERIES**

**ANG050-2-2L-FFA-DRDM-UNV-1/840**

TEST NO.=LA-T3444  
 LED TYPE=48 LED MODULE  
 NO. OF MODULE=1  
 SYSTEM WATT (W)=15.7  
 CRI ≥ 80  
 L70(Hrs.) ≥ 50,000  
 PHOTOMETRY TYPE=C



**CANDLEPOWER**

ANGLE	END	45	90	135	CROSS
0	322	322	322	322	322
5	368	348	322	307	294
15	401	378	321	270	255
25	445	393	303	236	218
35	467	398	285	204	185
45	482	392	257	155	44
55	465	372	233	60	0
65	429	341	202	8	0
75	385	307	146	0	0
85	343	274	102	0	0
90	311	250	74	0	0
95	285	229	46	0	0
115	247	199	12	0	0
125	206	139	0	0	0
135	175	56	0	0	0
145	28	1	0	0	0
155	0	0	0	0	0
165	0	0	0	0	0
175	0	0	0	0	0
180	0	0	0	0	0

**ZONAL LUMEN SUMMARY**

DEGREES	LUMENS	% LAMP	% FIXTURE
0-30	269	13	16
0-40	460	21	27
0-60	868	41	52
0-90	1373	64	82
90-120	267	12	16
90-150	302	14	18
90-180	302	14	18
0-180	1675	78	100

Luminaire Output = 1674.6 lumens  
 Luminaire Efficacy = 106.7 lm/W  
 Luminaire Efficiency = 78.18%

**SPACING CRITERION**

ALONG	ACROSS
2.05	1.36

