



ARCHITECTURAL

ANG050 (4FT)

SERIES (2' AND 8' AVAILABLE)
ARCHITECTURAL MINIATURE ANGLED LUMINAIRE

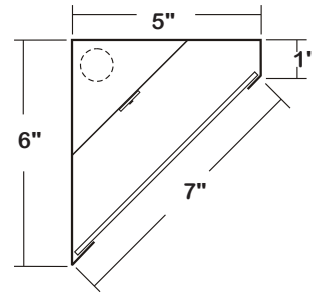
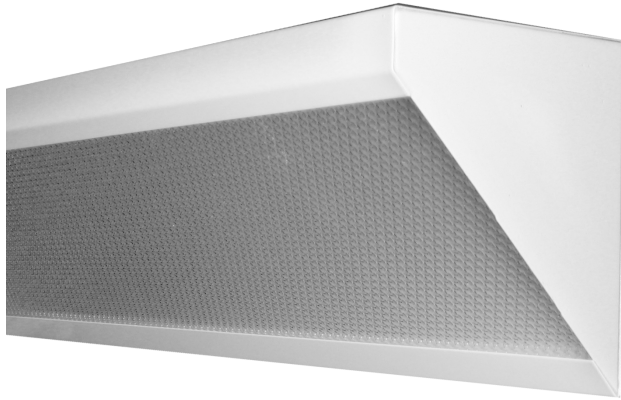


DATE	
JOB	

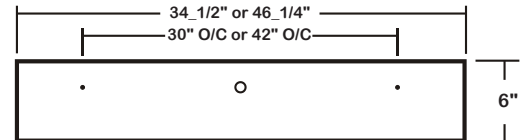
WWW.LALIGHTING.COM
626-454-8300

SURFACE / CORNER / WALL / CEILING MOUNTED LED LUMINAIRE

DIMENSIONS



- 3/16" MTG. K.O.
- 7/8" K.O.



APPLICATIONS

- Architectural, Retail, Corridor, Dormitory, Extended Care Facilities, Commercial

FEATURES

- 0-10V dimming driver standard (See DRIVER OPTIONS for other dimming types)
- Supports California Title 24 compliance

OPTIONS

- Full customization available upon request
- Additional lumen packages and color temperatures available
- Controls and sensors available (consult factory for sensor options)
- Wireless control options available (See SENSOR OPTIONS for wireless controls)
- Custom colors available (See CUSTOM COLORS For standard and custom options)
- Variety of lenses available (See OPTICAL OPTIONS for lens options)
- Emergency battery pack available (See BATTERY PACK OPTIONS for battery pack options)
- Tunable white available (2700K-6500K)

SPECIFICATIONS

CONSTRUCTION

- 20 ga. cold rolled steel welded housing
- Frameless lift-and-shift lens

FINISH

- Baked white powder coated finish / welded and painted after fabrication / minimum reflectance 90%

OPTICAL

- Frosted flat acrylic lens

ELECTRICAL

- High efficiency drivers coupled with long-life LEDs
- Service life tested at 50,000 hours (L70)
- Universal voltage 120V through 277V (347V / 480V available)
- Power Factor (PF) ≥ 0.9
- Total Harmonic Distortion (THD) $\leq 20\%$

LISTING

- UL USA and Canada listed / suitable for damp locations

WARRANTY

- 5-year limited warranty



Los Angeles Lighting Mfg. Co.
Headquarters
10141 Olney Street
El Monte, CA 91731
Made in the USA

Contact Us
T: 626-454-8300
F: 626-454-8399
www.lalighting.com



Due to continued product improvements and enhancements, Los Angeles Lighting Manufacturing Company reserves the right to alter specifications, dimensions, data, and/or materials without notice. Please visit our website to view the most current information.

MADE IN THE U.S.A.

Revised 06-27-19

WARNING

ORDERING INFORMATION

EXAMPLE: ANG050-6-4L-FFA-BPL1.5-DRDM-UNV-1/840

SERIES	LED LUMEN PACKAGE	EFFICACY	NOMINAL LENGTH	OPTICAL	ELECTRICAL	DRIVER	VOLTAGE	# OF LED ROW	CRI / CCT
ANG050			4L			DRDM	UNV	1	
ANG050 Architectural Miniature Angled LED Luminaire	2 Nom. 2000 Lumens 4 Nom. 4000 Lumens 6 Nom. 6000 Lumens 8 Nom. 8000 Lumens <i>*Additional Lumen Packages Available</i>	(Blank) Standard HE High Efficacy (Only 2000 / 4000 / 6000 lumens Systems)	4L 4'	FFA Frosted Flat Acrylic FPA Frosted Prismatic Acrylic PA Clear Prismatic Acrylic <i>See OPTICAL OPTIONS for Options</i>	BPL1.5 Emergency Battery Pack, Nom. 1500 lm <i>See BATTERY PACK OPTIONS for Options</i> WLC(LEDURU) EnOcean Wireless Control <i>See SENSOR OPTIONS for Options</i> *Leave Blank if Not Specified <i>Additional Electrical Options</i>	DRDM 0-10V Dimming Driver <i>See DRIVER OPTIONS for Options</i>	UNV 120V-277V <i>See DRIVER OPTIONS for Options</i>	1 One LED Row	830 80+CRI / 3000K Color Temp. 835 80+CRI / 3500K Color Temp. 840 80+CRI / 4000K Color Temp. 850 80+CRI / 5000K Color Temp. <i>*Additional Color Temp. Available</i>

SYSTEM DATA

THESE ARE THE MOST POPULAR LUMEN PACKAGES. PLEASE CONSULT FACTORY FOR ADDITIONAL SYSTEM DATA.

LED LUMEN PACKAGE	NORMAL AMBIENT TEMPERATURE PRODUCT CODE	DELIVERED LUMENS	SYSTEM WATTS	LUMINAIRE EFFICACY	AMBIENT TEMP.	FLUORESCENT EQUIVALENT	IES FILES
2000 Lumens (Nominal)	ANG050-2-4L-FFA-DRDM-UNV-1/840	1777 lm	15.4 W	115.7 lm/W	-20°C / 35°C	1-F32T8	*
4000 Lumens (Nominal)	ANG050-4-4L-PA-DRDM-UNV-1/840	3485 lm	31.5 W	110.7 lm/W	-20°C / 35°C	2-F32T8, 1-F54T5HO	LA-T3438
	ANG050-4-4L-FFA-DRDM-UNV-1/840	3395 lm	31.5 W	107.9 lm/W			LA-T3445
6000 Lumens (Nominal)	ANG050-6-4L-PA-DRDM-UNV-1/840	4981 lm	51.1 W	97.4 lm/W	-20°C / 35°C	3-F32T8	*
	ANG050-6-4L-FFA-DRDM-UNV-1/840	4853 lm	51.1 W	94.9 lm/W			*
8000 Lumens (Nominal)	ANG050-8-4L-PA-DRDM-UNV-1/840	6737 lm	51.8 W	130.2 lm/W	-20°C / 35°C	4-F32T8, 2-F54T5HO	*
	ANG050-8-4L-FFA-DRDM-UNV-1/840	6563 lm	53.0 W	123.9 lm/W			*

LED LUMEN PACKAGE	NORMAL AMBIENT TEMPERATURE (HIGH EFFICACY) PRODUCT CODE	DELIVERED LUMENS	SYSTEM WATTS	LUMINAIRE EFFICACY	AMBIENT TEMP.	FLUORESCENT EQUIVALENT	IES FILES
2000 Lumens (Nominal)	ANG050-2HE-4L-FFA-DRDM-UNV-1/840	1783 lm	12.6 W	142.0 lm/W	-20°C / 35°C	1-F32T8	*
4000 Lumens (Nominal)	ANG050-4HE-4L-PA-DRDM-UNV-1/840	3254 lm	22.7 W	143.6 lm/W	-20°C / 35°C	2-F32T8, 1-F54T5HO	*
	ANG050-4HE-4L-FFA-DRDM-UNV-1/840	3170 lm	23.2 W	136.7 lm/W			*
6000 Lumens (Nominal)	ANG050-6HE-4L-PA-DRDM-UNV-1/840	4915 lm	36.0 W	136.7 lm/W	-20°C / 35°C	3-F32T8	*
	ANG050-6HE-4L-FFA-DRDM-UNV-1/840	4788 lm	36.8 W	130.1 lm/W			*

NOTE:
System data is based on 120V input voltage. Actual performance may differ as a result of end-user environment and application.

This fixture has been tested and listed in accordance with UL Standards. L.A. Lighting certifies that it will operate safely when installed properly, and within an ambient temperature range noted in the system data table.

Additional lumen packages and color temperatures available.

PERFORMANCE DATA

[VIEW PHOTOMETRICS](#)



Los Angeles Lighting Mfg. Co.
Headquarters
10141 Olney Street
El Monte, CA 91731
Made in the USA

Contact Us
T: 626-454-8300
F: 626-454-8399
www.lalighting.com



Due to continued product improvements and enhancements, Los Angeles Lighting Manufacturing Company reserves the right to alter specifications, dimensions, data, and/or materials without notice. Please visit our website to view the most current information.

MADE IN THE U.S.A.

Revised 06-27-19

WARNING

SENSOR OPTIONS



CONTROLS AND SENSORS

WLC(LED RU) - EnOcean® LED Relay Zone Controller

- Supports a single LED fixture or multiple daisy chained LED fixtures
- Module installed inside lighting fixture

ESRPU-W-EO - EnOcean® Rocker Switch – Single – Surface Mount

- Wireless single rocker switch with mounting plate
- No batteries needed

EDRPU-W-EO - EnOcean® Rocker Switch – Double – Surface Mount

- Wireless double rocker switch with mounting plate
- No batteries needed

S3054-N300 - EnOcean® Navigan NWC 300U – Commissioning Tool

- Navigan Wireless Commissioner is used to configure EnOcean controllers & sensors
- It can be used to define link tables, change parameters/settings, and to edit & store projects
- Configuration settings can be saved and cloned to enable quick configuration
- Connectivity is through the NWC 300U USB Stick

EOSWU-W-EO - EnOcean® Occupancy Sensor – Wall Mount

- Wireless wall mounted occupancy sensor
- Solar powered - no batteries needed (coin battery operated in low light conditions)
- PIR motion sensor with both wide angle (50') and long range (100') options
- Mounting height: 6-8 feet

EOSCU-W-EO - EnOcean® Occupancy Sensor – Ceiling Mount

- Wireless ceiling mounted occupancy sensor
- Solar powered - no batteries needed (coin battery operated in low light conditions)
- PIR motion sensor with 360 degree viewing angle lens (34' diameter)
- Mounting height: 7-10 feet

ELLSU-W-EO - EnOcean® Light Level Sensor – Ceiling Mount

- Light Level sensor that measures and reports the level of available natural light
- Solar powered - no batteries needed (coin battery operated in low light conditions)
- Enables implementation of daylight harvesting control systems
- Mounting position: At the ceiling, close to ambient light source

DRIVER OPTIONS

PLEASE CONSULT FACTORY TO SEE IF YOUR SELECTED DRIVER OPTION WORKS WITH THIS FIXTURE.

DRDM – UNV

* Normal Stock Item

VOLTAGE

- 120V 120 Volt
- 277V 277 Volt
- UNV* Universal 120-277 Volt
- 347V 347 Volt
- 480V 480 Volt

DRIVER TYPE

- DRDM* 0-10V Dimming Driver
- DRDM1 0-10V Dimming Driver, 1% Dimming
- DRDM2C 2-Channel 0-10V Dimming Driver (for Color Tunable White)
- DR2W 2-Wire Phase Dimming Driver
- DRDA Digital Addressable DALI Dimming Driver
- DRDA2C Digital Addressable DALI Type8 2-Channel Driver (for Color Tunable White)
- DRDA2.0 Digital Addressable DALI 2.0 Dimming Driver
- DRDA2.02C Digital Addressable DALI 2.0 Type8 2-Channel Driver (for Color Tunable White)
- DRSD Step Dimming Driver
- DR(LTEA2W) Lutron® 2-Wire 1% Dimming Driver (120V Forward Phase only)
- DR(LDE1) Lutron® EcoSystem 1% Soft-On, Fade-to-Black™ Dimming Driver
- DR(LDE5) Lutron® EcoSystem 5% Dimming Driver
- DR(PEQ0) Lutron® EcoSystem 0.1% Soft-On, Fade-to-Black Dimming Driver
- DR(PSQ0) Lutron® T-Series Digital 1% Dimming 2-Channel Driver (for Color Tunable White)

OF DRIVERS SPECIFIED

- (Blank) Not Specified
- # Number of Drivers Specified per Lighting Fixture

BATTERY PACK OPTIONS

PLEASE CONSULT FACTORY TO SEE IF YOUR SELECTED BATTERY PACK OPTION WORKS WITH THIS FIXTURE.

BPL

LUMEN PACKAGE

- 0.7 Nominal 750 Lumens
- 1.5 Nominal 1500 Lumens
- 3.0 Nominal 3000 Lumens

*Additional lumen packages available

TYPE

- (Blank) Normal Ambient Temp. / Standard Operation
- C Cold Environment (-20°C)
- F With Flex for Remote Mounting
- SL Slim Casing
- ST Self Test / Diagnostic

*Additional options available



Los Angeles Lighting Mfg. Co.
 Headquarters
 10141 Olney Street
 El Monte, CA 91731
 Made in the USA

Contact Us
 T: 626-454-8300
 F: 626-454-8399
 www.lalighting.com



Due to continued product improvements and enhancements, Los Angeles Lighting Manufacturing Company reserves the right to alter specifications, dimensions, data, and/or materials without notice. Please visit our website to view the most current information.

MADE IN THE U.S.A.

Revised 06-27-19

WARNING

OPTICAL OPTIONS

STANDARD LENSES FOR ANG050

FFA	Frosted Flat Acrylic, No Thickness Specified
FPA	Frosted Prismatic Acrylic, No Thickness Specified, Female Prisms 3/16 Square Base
PA	Clear Prismatic Acrylic, No Thickness Specified, Female Prisms 3/16 Square Base

[CLICK HERE FOR FULL OPTICAL OPTIONS LIST](#)

CUSTOM COLORS

- BLK - Matte Black
- CS - Camaro Silver
- BZ - Statuary Bronze

Variety of RAL colors & Axalta/DuPont colors available upon request.



Los Angeles Lighting Mfg. Co.
 Headquarters
 10141 Olney Street
 El Monte, CA 91731
 Made in the USA

Contact Us
 T: 626-454-8300
 F: 626-454-8399
 www.lalighting.com



Due to continued product improvements and enhancements, Los Angeles Lighting Manufacturing Company reserves the right to alter specifications, dimensions, data, and/or materials without notice. Please visit our website to view the most current information.

MADE IN THE U.S.A.

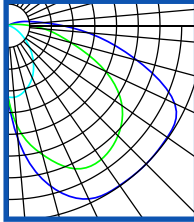
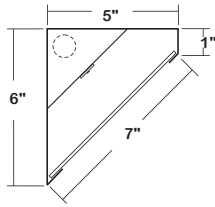
Revised 06-27-19

WARNING

PHOTOMETRIC DATA - ANG050_4FT SERIES

ANG050-4-4L-PA-DRDM-UNV-1/840

TEST NO.=LA-T3438
 LED TYPE=48 LED MODULE
 NO. OF MODULE=2
 SYSTEM WATT (W)=31.5
 CRI ≥ 80
 L70(Hrs.) ≥ 50,000
 PHOTOMETRY TYPE=C



CANDLEPOWER

ANGLE	END	45	90	135	CROSS
0	706	706	706	706	706
5	1124	985	711	513	442
15	1647	1320	663	308	219
25	1892	1562	568	148	75
35	1930	1614	439	58	17
45	1936	1541	304	17	1
55	1926	1379	178	3	0
65	1822	1067	90	0	0
75	1324	647	38	0	0
85	797	364	15	0	0
90	54	15	0	0	0
95	11	1	0	0	0
115	0	0	0	0	0
125	0	0	0	0	0
135	0	0	0	0	0
145	0	0	0	0	0
155	0	0	0	0	0
165	0	0	0	0	0
175	0	0	0	0	0
180	0	0	0	0	0

ZONAL LUMEN SUMMARY

DEGREES	LUMENS	% LAMP	% FIXTURE
0-30	677	16	19
0-40	1161	27	33
0-60	2275	53	65
0-90	3338	78	96
90-120	145	3	4
90-150	147	3	4
90-180	147	3	4
0-180	3484	81	100

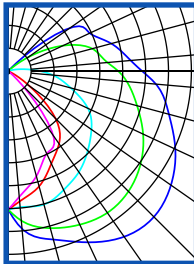
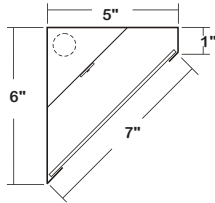
Luminaire Output= 3484.5 lumens
 Luminaire Efficacy = 110.6 lm/W
 Luminaire Efficiency = 81.34%

SPACING CRITERION

ALONG	ACROSS
2.88	1.09

ANG050-4-4L-FFA-DRDM-UNV-1/840

TEST NO.=LA-T3445
 LED TYPE=48 LED MODULE
 NO. OF MODULE=2
 SYSTEM WATT (W)=31.5
 CRI ≥ 80
 L70(Hrs.) ≥ 50,000
 PHOTOMETRY TYPE=C



CANDLEPOWER

ANGLE	END	45	90	135	CROSS
0	647	647	647	647	647
5	740	701	638	611	590
15	815	760	646	558	508
25	883	791	613	477	425
35	945	808	576	414	367
45	963	795	526	313	91
55	928	755	475	123	0
65	862	696	411	16	0
75	778	624	303	0	0
85	693	557	210	0	0
90	626	515	152	0	0
95	575	465	96	0	0
115	499	407	24	0	0
125	420	283	0	0	0
135	353	114	0	0	0
145	57	2	0	0	0
155	0	0	0	0	0
165	0	0	0	0	0
175	0	0	0	0	0
180	0	0	0	0	0

ZONAL LUMEN SUMMARY

DEGREES	LUMENS	% LAMP	% FIXTURE
0-30	542	13	16
0-40	927	22	27
0-60	1753	41	52
0-90	2781	65	82
90-120	543	13	16
90-150	614	14	18
90-180	614	14	18
0-180	3395	79	100

Luminaire Output= 3394.7 lumens
 Luminaire Efficacy = 107.8 lm/W
 Luminaire Efficiency = 79.24%

SPACING CRITERION

ALONG	ACROSS
2.05	1.36

