



RECESSED LED

GWW206 (2FT)

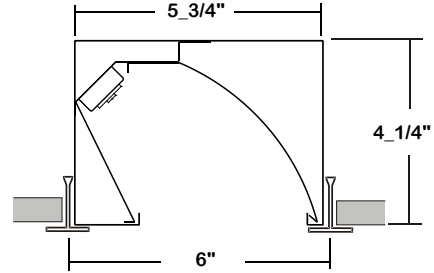
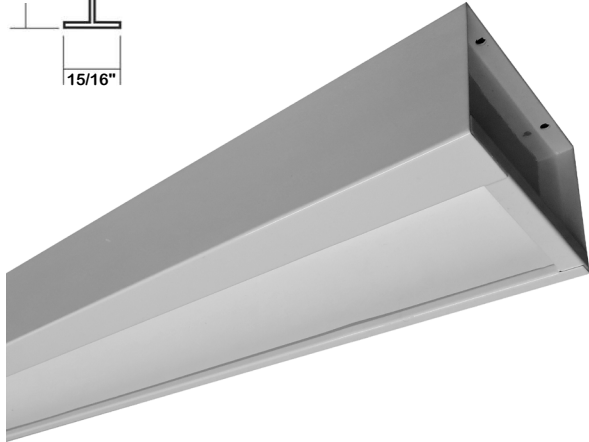
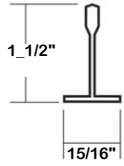
WALL WASH GRID LUMINAIRE SERIES (4' AVAILABLE)

DATE	
JOB	

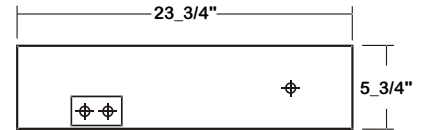
WWW.LALIGHTING.COM
626-454-8300

RECESSED MOUNTED LED LUMINAIRE FOR 1" OR 1_1/2" WIDE INVERTED T-BAR CEILINGS

DIMENSIONS



- ⊕ ACCESS PLATE
- ⊕ 7/8" K.O.



APPLICATIONS

- Commercial, Architectural, Retail

FEATURES

- 0-10V dimming driver standard (See DRIVER OPTIONS for other dimming types)
- Supports California Title 24 compliance

OPTIONS

- Full customization available upon request
- Additional lumen packages and color temperatures available
- Wireless control options available (See SENSOR OPTIONS for wireless controls)
- Emergency battery pack available (See BATTERY PACK OPTIONS for battery pack options)
- 20 ga. cold rolled steel housing available

SPECIFICATIONS

CONSTRUCTION

- 22 ga. cold rolled steel housing
- High reflectance low gloss white reflector

FINISH

- Baked white powder coated finish / minimum reflectance 90% / painted after fabrication

ELECTRICAL

- High efficiency drivers coupled with long-life LEDs
- Service life greater than 50,000 hours (L70)
- Universal voltage 120V through 277V (347V / 480V available)
- Power Factor (PF) ≥ 0.9
- Total Harmonic Distortion (THD) ≤ 20%

LISTING

- UL USA and Canada listed / suitable for damp locations

WARRANTY

- 5-year limited warranty



Los Angeles Lighting Mfg. Co.
Headquarters
10141 Olney Street
El Monte, CA 91731
Made in the USA

Contact Us
T: 626-454-8300
F: 626-454-8399
www.lalighting.com



Due to continued product improvements and enhancements, Los Angeles Lighting Manufacturing Company reserves the right to alter specifications, dimensions, data, and/or materials without notice. Please visit our website to view the most current information.

MADE IN THE U.S.A.

Revised 01-02-19

WARNING

ORDERING INFORMATION

EXAMPLE: GWW206-4-2L-BPL10-1DRDM-UNV-1/840

SERIES	LED LUMEN PACKAGE	EFFICACY	NOMINAL LENGTH	MECHANICAL	ELECTRICAL	DRIVER	VOLTAGE	# OF LED ROW	CRI / CCT
GWW206			2L			1DRDM	UNV	1	
GWW206 Wall Wash Grid LED Luminaire	2 Nom. 2000 Lumens 4 Nom. 4000 Lumens <i>*Additional Lumen Packages Available</i>	(Blank) Standard HE High Efficacy	2L 2'	20G 20 ga. Cold Rolled Steel Housing *Leave Blank if Not Specified	BPL10 Emergency Battery Pack, Constant 10W Nom. 1500 lm <i>See BATTERY PACK OPTIONS for Options</i> WLC(XXXXX) Wireless Control <i>See SENSOR OPTIONS for Options</i> *Leave Blank if Not Specified <i>Additional Electrical Options</i>	1DRDM 0-10V One Dimming Driver <i>See DRIVER OPTIONS for Options</i>	UNV 120V-277V <i>See DRIVER OPTIONS for Options</i>	1 One LED Row	830 80+CRI / 3000K Color Temp. 835 80+CRI / 3500K Color Temp. 840 80+CRI / 4000K Color Temp. 850 80+CRI / 5000K Color Temp. *Additional Color Temp. Available

SYSTEM DATA

THESE ARE THE MOST POPULAR LUMEN PACKAGES. PLEASE CONSULT FACTORY FOR ADDITIONAL SYSTEM DATA.

LED LUMEN PACKAGE	NORMAL AMBIENT TEMPERATURE PRODUCT CODE	DELIVERED LUMENS	SYSTEM WATTS	LUMINAIRE EFFICACY	AMBIENT TEMP.	FLUORESCENT EQUIVALENT	IES FILES
2000 Lumens (Nominal)	GWW206-2-2L-1DRDM-UNV-1/840	*	*	*	-20°C / 35°C	2-F17T8, 1-F24T5HO	*
4000 Lumens (Nominal)	GWW206-4-2L-1DRDM-UNV-1/840	*	*	*	-20°C / 35°C	4-F17T8, 2-F24T5HO	

LED LUMEN PACKAGE	NORMAL AMBIENT TEMPERATURE (HIGH EFFICACY) PRODUCT CODE	DELIVERED LUMENS	SYSTEM WATTS	LUMINAIRE EFFICACY	AMBIENT TEMP.	FLUORESCENT EQUIVALENT	IES FILES
2000 Lumens (Nominal)	GWW206-2HE-2L-1DRDM-UNV-1/840	*	*	*	-20°C / 35°C	2-F17T8, 1-F24T5HO	*
4000 Lumens (Nominal)	GWW206-4HE-2L-1DRDM-UNV-1/840	*	*	*	-20°C / 35°C	4-F17T8, 2-F24T5HO	*

NOTE:

System data is based on 120V input voltage. Actual performance may differ as a result of end-user environment and application.

This fixture has been tested and listed in accordance with UL Standards. L.A. Lighting certifies that it will operate safely when installed properly, and within an ambient temperature range noted in the system data table.

Additional lumen packages and color temperatures available.



Los Angeles Lighting Mfg. Co.
Headquarters
10141 Olney Street
El Monte, CA 91731
Made in the USA

Contact Us
T: 626-454-8300
F: 626-454-8399
www.lalighting.com



Due to continued product improvements and enhancements, Los Angeles Lighting Manufacturing Company reserves the right to alter specifications, dimensions, data, and/or materials without notice. Please visit our website to view the most current information.

MADE IN THE U.S.A.

Revised 01-02-19

WARNING

SENSOR OPTIONS

LUTRON® CONTROLS AND SENSORS

WLC(FCJS0) - Lutron® Vive PowPak® 0-10V Wireless Fixture Control

- One per fixture (external mount)
- Controls 1A of load or up to 3 drivers
- Universal Voltage (120V-277V)

WLC(FCJSE) - Lutron® Vive PowPak® EcoSystem Wireless Fixture Control

- One per fixture (external mount)
- Controls 1A of load or up to 3 drivers
- Universal Voltage (120V-277V)

**Must specify Lutron® Vive compatible driver*

PJ2-2BRL - Lutron® Pico® 2-Button Wireless Remote

- Works with Wireless Fixture Controls
- Controls ON/OFF and dimming UP/DOWN

FC-SENSOR - Lutron® PowPak® Occupancy/Daylight Sensor

- Turns light ON/OFF based on motion
- Recommended mounting height of 8-12'
- For dry and damp locations
- Universal Voltage (120V-277V)

FC-VSENSOR - Lutron® PowPak® Vacancy/Daylight Sensor

- Turns light OFF when area is vacant
- Recommended mounting height of 8-12'
- For dry and damp locations
- Universal Voltage (120V-277V)



CONTROLS AND SENSORS

WLC(LED RU) - EnOcean® LED Relay Zone Controller

- Supports a single LED fixture or multiple daisy chained LED fixtures
- Module installed inside lighting fixture

ESRP-U-EO - EnOcean® Rocker Switch – Single – Surface Mount

- Wireless single rocker switch with mounting plate
- No batteries needed

EDRP-U-EO - EnOcean® Rocker Switch – Double – Surface Mount

- Wireless double rocker switch with mounting plate
- No batteries needed

S3054-N300 - EnOcean® Navigan NWC 300U – Commissioning Tool

- Navigan Wireless Commissioner is used to configure EnOcean controllers & sensors
- It can be used to define link tables, change parameters/settings, and to edit & store projects
- Configuration settings can be saved and cloned to enable quick configuration
- Connectivity is through the NWC 300U USB Stick

EOSWU-W-EO - EnOcean® Occupancy Sensor – Wall Mount

- Wireless wall mounted occupancy sensor
- Solar powered - no batteries needed (coin battery operated in low light conditions)
- PIR motion sensor with both wide angle (50') and long range (100') options
- Mounting height: 6-8 feet

EOSCU-W-EO - EnOcean® Occupancy Sensor – Ceiling Mount

- Wireless ceiling mounted occupancy sensor
- Solar powered - no batteries needed (coin battery operated in low light conditions)
- PIR motion sensor with 360 degree viewing angle lens (34' diameter)
- Mounting height: 7-10 feet

ELLSU-W-EO - EnOcean® Light Level Sensor – Ceiling Mount

- Light Level sensor that measures and reports the level of available natural light
- Solar powered - no batteries needed (coin battery operated in low light conditions)
- Enables implementation of daylight harvesting control systems
- Mounting position: At the ceiling, close to ambient light source

DRIVER OPTIONS

PLEASE CONSULT FACTORY TO SEE IF YOUR SELECTED DRIVER OPTION WORKS WITH THIS FIXTURE.

1 DRDM – UNV

* Normal Stock Item

VOLTAGE

- 120V** 120 Volt
- 277V** 277 Volt
- UNV*** Universal 120-277 Volt
- 347V** 347 Volt
- 480V** 480 Volt

DRIVER TYPE

- DRDM*** 0-10V Dimming Driver
- DRDM2C** 2-Channel 0-10V Dimming Driver (for Color Tunable White)
- DR2W** 2-Wire Dimming Driver
- DRDA** Digital Addressable DALI Dimming Driver
- DRDA2C** Digital Addressable DALI Type8 2-Channel Driver (for Color Tunable White)
- DRCR** Control Ready Driver
- DRSD** Step Dimming Driver
- DR(LTEA2W)** Lutron® 2-Wire 1% Dimming Driver (120V Forward Phase only)
- DR(LDE1)** Lutron® EcoSystem 1% Soft-On, Fade-to-Black™ Dimming Driver
- DR(LDE5)** Lutron® EcoSystem 5% Dimming Driver
- DR(PEQ0)** Lutron® EcoSystem 0.1% Soft-On, Fade-to-Black Dimming Driver
- DR(PSQ0)** Lutron® T-Series Digital 1% Dimming 2-Channel Driver (for Color Tunable White)

OF DRIVER

- 1** One Driver per Lighting Fixture
- 2** Two Drivers per Lighting Fixture

BATTERY PACK OPTIONS

PLEASE CONSULT FACTORY TO SEE IF YOUR SELECTED BATTERY PACK OPTION WORKS WITH THIS FIXTURE.

BPL

OUTPUT WATTAGE

- 5** Constant 5W, Nominal 750 Lumens
- 10** Constant 10W, Nominal 1500 Lumens*
- 15** Constant 15W, Nominal 2250 Lumens
- 20** Constant 20W, Nominal 3000 Lumens

*Note: 10W standard when wattage is not specified

TYPE

- (Blank)** Normal Ambient Temp. / Standard Operation
- C** Cold Environment
- F** With Flex for Remote Mounting
- SL** Slim Casing
- ST** Self Test / Diagnostic



Los Angeles Lighting Mfg. Co.
 Headquarters
 10141 Olney Street
 El Monte, CA 91731
 Made in the USA

Contact Us
 T: 626-454-8300
 F: 626-454-8399
 www.lalighting.com



Due to continued product improvements and enhancements, Los Angeles Lighting Manufacturing Company reserves the right to alter specifications, dimensions, data, and/or materials without notice. Please visit our website to view the most current information.

MADE IN THE U.S.A.

Revised 01-02-19

WARNING