



RECESSED LED

GWW210 (4FT)

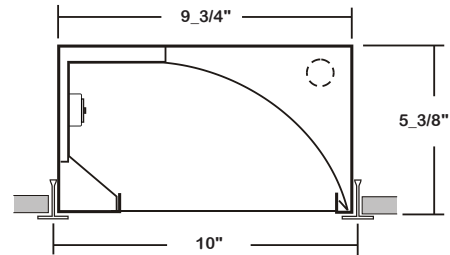
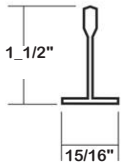
WALL WASH GRID LUMINAIRE SERIES (2' AVAILABLE)

DATE	
JOB	

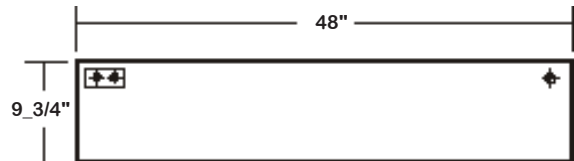
WWW.LALIGHTING.COM
626-454-8300

RECESSED MOUNTED LED LUMINAIRE FOR 1" OR 1_1/2" WIDE INVERTED T-BAR CEILINGS

DIMENSIONS



- ⊕ ⊕ ACCESS PLATE
- ⊕ 7/8" K.O.



APPLICATIONS

- Commercial, Architectural, Retail

FEATURES

- 0-10V dimming driver standard
- Supports California Title 24 compliance

OPTIONS

- Full customization available upon request
- Additional lumen packages and color temperatures available
- Wireless control options available
- Emergency battery pack available
- 20 ga. cold rolled steel housing available

SPECIFICATIONS

CONSTRUCTION

- 22 ga. cold rolled steel housing
- High reflectance low gloss white reflector

FINISH

- Baked white powder coated finish / minimum reflectance 90% / painted after fabrication

ELECTRICAL

- High efficiency drivers coupled with long-life LEDs
- Service life greater than 50,000 hours (L70)
- Universal voltage 120V through 277V (347V / 480V available)
- Power Factor (PF) ≥ 0.9
- Total Harmonic Distortion (THD) ≤ 20%

LISTING

- UL USA and Canada listed / suitable for damp locations

WARRANTY

- 5-Year limited warranty standard. 10-Year limited warranty also available



Los Angeles Lighting Mfg. Co.

Contact Us
T: 626-454-8300 10141 Olney Street
F: 626-454-8399 El Monte, CA 91731
www.lalighting.com Made in the USA



Due to continued product improvements and enhancements, Los Angeles Lighting Manufacturing Company reserves the right to alter specifications, dimensions, data, and/or materials without notice. Please visit our website to view the most current information.

© 2022 LOS ANGELES LIGHTING MANUFACTURING CO. ALL RIGHTS RESERVED.

Revised: 07/07/23



MADE IN THE USA
BAA Compliant

ORDERING INFORMATION

EXAMPLE: GWW210-4-4L-BPL1.5-DRDM-UNV-1/840

SERIES	LED LUMEN PACKAGE	EFFICACY	NOMINAL LENGTH	MECHANICAL	ELECTRICAL	DRIVER	VOLTAGE	# OF LED ROW	CRI / CCT
GWW210			4L			DRDM	UNV	1	
GWW210 Wall Wash Grid LED Luminaire	2 Nom. 2000 Lumens 4 Nom. 4000 Lumens 6 Nom. 6000 Lumens 8 Nom. 8000 Lumens *Additional Lumen Packages Available	(Blank) Standard HE High Efficacy (Only 2000 / 4000 / 6000 lumens Systems)	4L 4'	20G 20 ga. Cold Rolled Steel Housing *Leave Blank if Not Specified	BPL1.5 1500lm Emergency Battery Pack WLC(XXXXX) Wireless Control *Leave Blank if Not Specified <u>Additional Electrical Options</u>	DRDM 0-10V Dimming Driver	UNV 120V-277V	1 One LED Row	830 80+CRI / 3000K Color Temp. 835 80+CRI / 3500K Color Temp. 840 80+CRI / 4000K Color Temp. 850 80+CRI / 5000K Color Temp. *Additional Color Temp. Available
Standard options for GWW210 shown above. For additional options, including lumen packages, controls, lenses, switches, finishes, and more, visit www.lalighting.com/resources or contact customer service.									

SYSTEM DATA

THESE ARE THE MOST POPULAR LUMEN PACKAGES. PLEASE CONSULT FACTORY FOR ADDITIONAL SYSTEM DATA.

LED LUMEN PACKAGE	NORMAL AMBIENT TEMPERATURE PRODUCT CODE	DELIVERED LUMENS	SYSTEM WATTS	LUMINAIRE EFFICACY	AMBIENT TEMP.	FLUORESCENT EQUIVALENT	IES FILES
2000 Lumens (Nominal)	GWW210-2-4L-DRDM-UNV-1/840	1806 lm	15.7 W	114.9 lm/W	-20°C / 35°C	1-F32T8	*
4000 Lumens (Nominal)	GWW210-4-4L-DRDM-UNV-1/840	3451 lm	33.3 W	103.5 lm/W	-20°C / 35°C	2-F32T8, 1-F54T5HO	LA-T3380
6000 Lumens (Nominal)	GWW210-6-4L-DRDM-UNV-1/840	4932 lm	52.3 W	94.3 lm/W	-20°C / 35°C	3-F32T8	*
8000 Lumens (Nominal)	GWW210-8-4L-DRDM-UNV-1/840	6849 lm	53.0 W	129.3 lm/W	-20°C / 35°C	4-F32T8, 2-F54T5HO	*

LED LUMEN PACKAGE	NORMAL AMBIENT TEMPERATURE (HIGH EFFICACY) PRODUCT CODE	DELIVERED LUMENS	SYSTEM WATTS	LUMINAIRE EFFICACY	AMBIENT TEMP.	FLUORESCENT EQUIVALENT	IES FILES
2000 Lumens (Nominal)	GWW210-2HE-4L-DRDM-UNV-1/840	1861 lm	12.6 W	148.2 lm/W	-20°C / 35°C	1-F32T8	*
4000 Lumens (Nominal)	GWW210-4HE-4L-DRDM-UNV-1/840	3308 lm	23.2 W	142.7 lm/W	-20°C / 35°C	2-F32T8, 1-F54T5HO	*
6000 Lumens (Nominal)	GWW210-6HE-4L-DRDM-UNV-1/840	4997 lm	36.8 W	135.8 lm/W	-20°C / 35°C	3-F32T8	*

NOTE:

System data is based on 120V input voltage. Actual performance may differ as a result of end-user environment and application.

This fixture has been tested and listed in accordance with UL Standards. L.A. Lighting certifies that it will operate safely when installed properly, and within an ambient temperature range noted in the system data table.

Additional lumen packages and color temperatures available.



Los Angeles Lighting Mfg. Co.
 Contact Us
 T: 626-454-8300 10141 Olney Street
 F: 626-454-8399 El Monte, CA 91731
www.lalighting.com Made in the USA



Due to continued product improvements and enhancements, Los Angeles Lighting Manufacturing Company reserves the right to alter specifications, dimensions, data, and/or materials without notice. Please visit our website to view the most current information.

© 2022 LOS ANGELES LIGHTING MANUFACTURING CO. ALL RIGHTS RESERVED.

Revised: 07/07/23

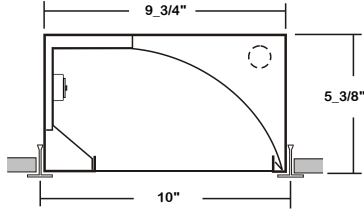
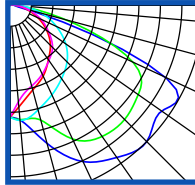


MADE IN THE USA
BAA Compliant

PHOTOMETRIC DATA - GWW210 4' SERIES

GWW210-4-4L-DRDM-UNV-1/840

TEST NO.= LA-T3380
 LED TYPE=48 LED MODULE
 NO. OF MODULE=2
 SYSTEM WATT (W)=33.1
 CRI ≥ 80
 L70(Hrs.) ≥ 50,000
 PHOTOMETRY TYPE=C



CANDLEPOWER

ANGLE	END	45	90	135	180
0	861	861	861	861	861
5	886	883	890	786	747
15	1100	915	834	676	644
25	1326	1135	762	603	587
35	1428	1232	691	515	521
45	1483	1243	619	439	462
55	1419	1200	522	346	363
65	1312	1040	394	240	263
75	105	442	254	132	147
85	33	40	78	40	39
90	0	0	2	0	0
95	0	0	0	0	0
105	0	0	0	0	0
115	0	0	0	0	0
125	0	0	0	0	0
135	0	0	0	0	0
145	0	0	0	0	0
155	0	0	0	0	0
165	0	0	0	0	0
175	0	0	0	0	0
180	0	0	0	0	0

ZONAL LUMEN SUMMARY

DEGREES	LUMENS	% LAMP	% FIXTURE
0-30	714	17	21
0-40	1250	29	36
0-60	2547	59	74
0-90	3450	81	100
90-120	0	0	0
90-150	0	0	0
90-180	0	0	0
0-180	3450	81	100

Luminaire Output= 3450.4 lm
 Luminaire Efficacy = 104.2 lm/W

SPACING CRITERION

ALONG	ACROSS
2.24	1.25

This Space is intentionally left blank.

This Space is intentionally left blank.

This Space is intentionally left blank.

