



# SECURITY LED

## BCL200 (1X1) SERIES

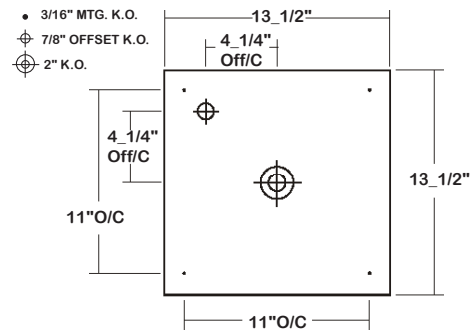
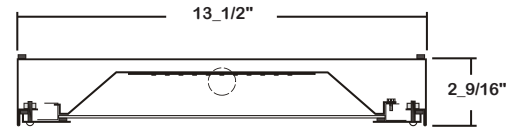
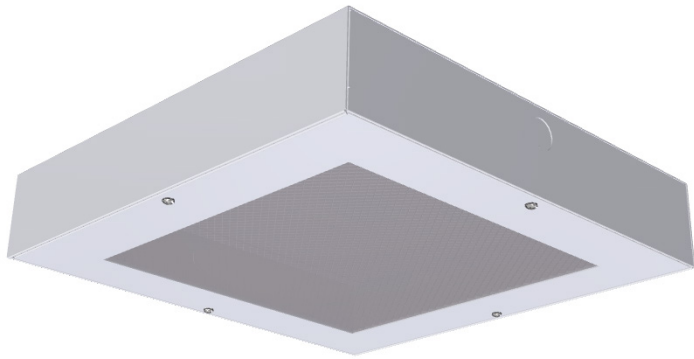
SHALLOW CANOPY SECURITY WET LOCATION WITH POLYCARBONATE LENS LUMINAIRE

DATE	
JOB	

WWW.LALIGHTING.COM  
626-454-8300

### SURFACE MOUNTED SECURITY WET LOCATION LED LUMINAIRE

### DIMENSIONS



### APPLICATIONS

- Canopy, Educational Facilities, Corridor, Stairwell, Pedestrian Tunnel, Passageway, Vandal Resistant Areas, Wet Location, Commercial

### FEATURES

- Wet location (UL listed with sprinkler test)
- 0-10V dimming driver standard (See *DRIVER OPTIONS* for other dimming types)
- Supports California Title 24 compliance
- Safety cables attached to cover

### OPTIONS

- Full customization available upon request
- Additional color temperatures available
- Controls and photocell / occupancy sensors available (See *SENSOR OPTIONS* for controls and sensors)
- Wireless control options available (See *SENSOR OPTIONS* for wireless controls)
- Custom colors available (See *CUSTOM COLORS* for standard and custom options)
- Emergency battery pack available (See *BATTERY PACK OPTIONS* for battery pack options)
- Tamper proof screws available
- Pendant mounting adapter available (View *Installation Instructions*) (See *OPTIONS* for details)

### SPECIFICATIONS

#### CONSTRUCTION

- 20 ga. electro-galvanized steel construction
- Neoprene gasket back housing
- Aluminum heat sink cover
- Stainless steel fasteners
- Two side knockouts for 1/2" conduit (knockouts on opposite sides of fixture)

#### FINISH

- Baked white powder coated finish / painted after fabrication / minimum reflectance 90%

#### OPTICAL

- High impact clear prismatic polycarbonate 0.125 lens standard

#### ELECTRICAL

- High efficiency drivers coupled with long-life LEDs
- Service life greater than 50,000 hours (L70)
- Universal voltage 120V through 277V (347V / 480V available)
- Power Factor (PF)  $\geq 0.9$
- Total Harmonic Distortion (THD)  $\leq 20\%$

#### LISTING

- UL USA and Canada listed / suitable for wet locations

#### WARRANTY

- 5-year limited warranty



**Los Angeles Lighting Mfg. Co.**  
Headquarters  
10141 Olney Street  
El Monte, CA 91731  
Made in the USA

Contact Us  
T: 626-454-8300  
F: 626-454-8399  
www.lalighting.com



Due to continued product improvements and enhancements, Los Angeles Lighting Manufacturing Company reserves the right to alter specifications, dimensions, data, and/or materials without notice. Please visit our website to view the most current information.

**MADE IN THE U.S.A.**

Revised 03-19-19

**WARNING**

**ORDERING INFORMATION**

**EXAMPLE:** BCL200-4-1L-PPC2-DRDM-UNV-1/840

SERIES	LED LUMEN PACKAGE	NOMINAL LENGTH	COLOR	OPTICAL	MECHANICAL	ELECTRICAL	DRIVER	VOLTAGE	# OF LED ROW	CRI / CCT
<b>BCL200</b>		<b>1L</b>					<b>DRDM</b>	<b>UNV</b>	<b>1</b>	
<b>BCL200</b> Shallow Canopy Security Wet Location with Polycarbonate Lens LED Luminaire	<b>2</b> Nom. 2000 Lumens <b>3</b> Nom. 3000 Lumens <b>4</b> Nom. 4000 Lumens	<b>1L</b> 1' x 1'	<b>(Blank)</b> Standard White  <b>BLK</b> Matte Black  <b>CS</b> Camaro Silver  <b>BZ</b> Statuary Bronze  <u>See CUSTOM COLORS for Options</u>	<b>PPC2</b> High Impact Clear Prismatic Polycarbonate 0.125	<b>TP</b> Tamper Proof Screws  <b>SMA</b> Pendant Mounting Adapter (Safety Cable Set Included)  *Leave Blank if Not Specified  <u>Additional Mechanical Options</u>	<b>BPL10</b> Emergency Battery Pack, Constant 10W Nom. 1500 lm  <b>MSxx</b> Motion Sensor  <b>PCS</b> Photocell Sensor  <b>WLC(LED RU)</b> EnOcean Wireless Control  <u>See SENSOR OPTIONS for Options</u>  *Leave Blank if Not Specified  <u>Additional Electrical Options</u>	<b>DRDM</b> 0-10V Dimming Driver  <u>See DRIVER OPTIONS for Options</u>	<b>UNV</b> 120V-277V  <u>See DRIVER OPTIONS for Options</u>	<b>1</b> One LED Row	<b>840</b> 80+CRI / 4000K Color Temp.  <b>850</b> 80+CRI / 5000K Color Temp.  *Additional Color Temp. Available

**SYSTEM DATA**

**THESE ARE THE MOST POPULAR LUMEN PACKAGES. PLEASE CONSULT FACTORY FOR ADDITIONAL SYSTEM DATA.**

LED LUMEN PACKAGE	NORMAL AMBIENT TEMPERATURE PRODUCT CODE	DELIVERED LUMENS	SYSTEM WATTS	LUMINAIRE EFFICACY	AMBIENT TEMP.	CFL EQUIVALENT	IES FILES
2000 Lumens (Nominal)	BCL200-2-1L-PPC2-DRDM-UNV-1/840	1723 lm	15.9 W	108.4 lm/W	-20°C / 35°C	2-13WCFL G24Q-1	*
3000 Lumens (Nominal)	BCL200-3-1L-PPC2-DRDM-UNV-1/840	2379 lm	21.9 W	108.6 lm/W	-20°C / 35°C	2-26WCFL G24Q-3	*
4000 Lumens (Nominal)	BCL200-4-1L-PPC2-DRDM-UNV-1/840	3244 lm	29.9 W	108.5 lm/W	-20°C / 35°C	2-32WCFL GXG24Q-3	<a href="#">LA-T3389</a>

**NOTE:**

System data is based on 120V input voltage. Actual performance may differ as a result of end-user environment and application.

This fixture has been tested and listed in accordance with UL Standards. L.A. Lighting certifies that it will operate safely when installed properly, and within an ambient temperature range noted in the system data table.

Additional lumen packages and color temperatures available.

**PERFORMANCE DATA**

[VIEW PHOTOMETRICS](#)



**Los Angeles Lighting Mfg. Co.**  
Headquarters  
10141 Olney Street  
El Monte, CA 91731  
Made in the USA  
Contact Us  
T: 626-454-8300  
F: 626-454-8399  
www.lalighting.com



Due to continued product improvements and enhancements, Los Angeles Lighting Manufacturing Company reserves the right to alter specifications, dimensions, data, and/or materials without notice. Please visit our website to view the most current information.

**MADE IN THE U.S.A.**

Revised 03-19-19

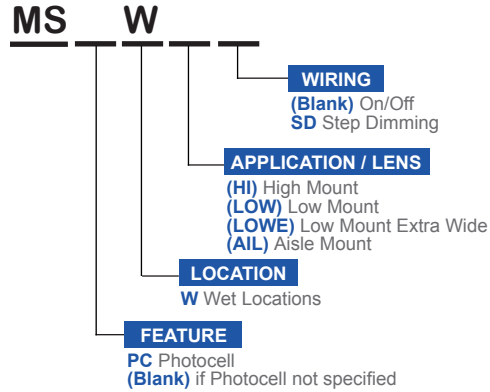
**WARNING**

**SENSOR OPTIONS**

**PHOTOCELL - EXTERNAL BUTTON DESIGN**

- PCS - Photocell Sensor**
- Turns light ON/OFF based on light levels
  - Fixture mounting height 8-45'
  - Universal Voltage (120V-277V)

**PASSIVE INFRARED - SENSOR ON ATTACHED SENSOR BOX**



**enocean** CONTROLS AND SENSORS

- WLC(LED RU) - EnOcean® LED Relay Zone Controller**
- Supports a single LED fixture or multiple daisy chained LED fixtures
  - Module installed inside lighting fixture
- ESRPU-W-EO - EnOcean® Rocker Switch – Single – Surface Mount**
- Wireless single rocker switch with mounting plate
  - No batteries needed
- ESDRPU-W-EO - EnOcean® Rocker Switch – Double – Surface Mount**
- Wireless double rocker switch with mounting plate
  - No batteries needed
- S3054-N30 - EnOcean® Navigan NWC 300U – Commissioning Tool**
- Navigan Wireless Commissioner is used to configure EnOcean controllers & sensors
  - It can be used to define link tables, change parameters/settings, and to edit & store projects
  - Configuration settings can be saved and cloned to enable quick configuration
  - Connectivity is through the NWC 300U USB Stick

- EOSWU-W-EO - EnOcean® Occupancy Sensor – Wall Mount**
- Wireless wall mounted occupancy sensor
  - Solar powered - no batteries needed (coin battery operated in low light conditions)
  - PIR motion sensor with both wide angle (50') and long range (100') options
  - Mounting height: 6-8 feet
- EOSCU-W-EO - EnOcean® Occupancy Sensor – Ceiling Mount**
- Wireless ceiling mounted occupancy sensor
  - Solar powered - no batteries needed (coin battery operated in low light conditions)
  - PIR motion sensor with 360 degree viewing angle lens (34' diameter)
  - Mounting height: 7-10 feet
- ELLSU-W-EO - EnOcean® Light Level Sensor – Ceiling Mount**
- Light Level sensor that measures and reports the level of available natural light
  - Solar powered - no batteries needed (coin battery operated in low light conditions)
  - Enables implementation of daylight harvesting control systems
  - Mounting position: At the ceiling, close to ambient light source



**Los Angeles Lighting Mfg. Co.**  
Headquarters  
10141 Olney Street  
El Monte, CA 91731  
Made in the USA

Contact Us  
T: 626-454-8300  
F: 626-454-8399  
www.lalighting.com



Due to continued product improvements and enhancements, Los Angeles Lighting Manufacturing Company reserves the right to alter specifications, dimensions, data, and/or materials without notice. Please visit our website to view the most current information.

**MADE IN THE U.S.A.**

Revised 03-19-19  
**WARNING**

**DRIVER OPTIONS**

PLEASE CONSULT FACTORY TO SEE IF YOUR SELECTED DRIVER OPTION WORKS WITH THIS FIXTURE.

**DRDM – UNV**

\* Normal Stock Item

**VOLTAGE**

- 120V** 120 Volt
- 277V** 277 Volt
- UNV\*** Universal 120-277 Volt
- 347V** 347 Volt
- 480V** 480 Volt

**DRIVER TYPE**

- DRDM\*** 0-10V Dimming Driver
- DRDM1** 0-10V Dimming Driver, 1% Dimming
- DR2W** 2-Wire Phase Dimming Driver
- DRDA** Digital Addressable DALI Dimming Driver
- DRDA2.0** Digital Addressable DALI 2.0 Dimming Driver
- DRSD** Step Dimming Driver
- DR(LTEA2W)** Lutron® 2-Wire 1% Dimming Driver (120V Forward Phase only)
- DR(LDE1)** Lutron® EcoSystem 1% Soft-On, Fade-to-Black™ Dimming Driver
- DR(LDE5)** Lutron® EcoSystem 5% Dimming Driver
- DR(PEQ0)** Lutron® EcoSystem 0.1% Soft-On, Fade-to-Black Dimming Driver

**# OF DRIVERS SPECIFIED**

- (Blank)** Not Specified
- #** Number of Drivers Specified per Lighting Fixture

**BATTERY PACK OPTIONS**

PLEASE CONSULT FACTORY TO SEE IF YOUR SELECTED BATTERY PACK OPTION WORKS WITH THIS FIXTURE.

**BPL**

**OUTPUT WATTAGE**

- 5** Constant 5W, Nominal 750 Lumens
- 10** Constant 10W, Nominal 1500 Lumens\*
- 15** Constant 15W, Nominal 2250 Lumens
- 20** Constant 20W, Nominal 3000 Lumens

\*Note: 10W standard when wattage is not specified

**TYPE**

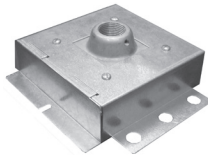
- (Blank)** Normal Ambient Temp. / Standard Operation
- C** Cold Environment
- F** With Flex for Remote Mounting
- SL** Slim Casing
- ST** Self Test / Diagnostic

**OPTIONS**

**SMA**

- Pendant Mounting Adapter
- 20 ga. die formed galvanized steel construction
- Die cast aluminum hub for 3/4" pipe pre-installed
- Designed for single point pendant mount applications
- Negates wet location listing

(View [Installation Instructions](#))



**CUSTOM COLORS**

**BLK - Matte Black**

**CS - Camaro Silver**

**BZ - Statuary Bronze**

Variety of RAL colors & Axalta/DuPont colors available upon request.



**Los Angeles Lighting Mfg. Co.**  
 Headquarters  
 10141 Olney Street  
 El Monte, CA 91731  
 Made in the USA

Contact Us  
 T: 626-454-8300  
 F: 626-454-8399  
 www.lalighting.com



Due to continued product improvements and enhancements, Los Angeles Lighting Manufacturing Company reserves the right to alter specifications, dimensions, data, and/or materials without notice. Please visit our website to view the most current information.

**MADE IN THE U.S.A.**

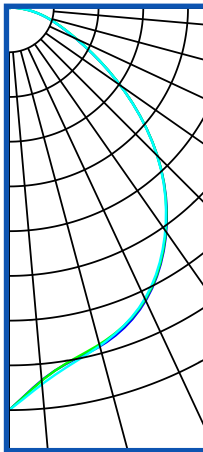
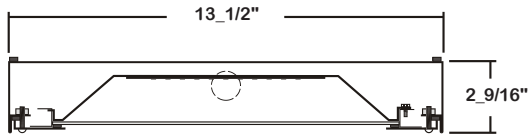
Revised 03-19-19

**WARNING**

**PHOTOMETRIC DATA - BCL200**

**BCL200-4-1L-PPC2-DRDM-UNV-1/840**

TEST NO. = LA-T3389  
 LED TYPE = 108 LED MODULE  
 NO. OF MODULE = 1  
 SYSTEM WATT (W) = 29.9  
 CRI ≥ 80  
 L70(Hrs.) ≥ 50,000  
 PHOTOMETRY TYPE = C



**CANDLEPOWER**

ANGLE	END	45	CROSS
0	1507	1507	1507
5	1401	1403	1416
15	1313	1306	1312
25	1211	1206	1203
35	1026	1023	1019
45	785	785	784
55	509	509	508
65	276	279	278
75	146	149	147
85	47	46	46
90	5	4	4
95	0	0	0
105	0	0	0
115	0	0	0
125	0	0	0
135	0	0	0
145	0	0	0
155	0	0	0
165	0	0	0
175	0	0	0
180	0	0	0

**ZONAL LUMEN SUMMARY**

DEGREES	LUMENS	% LAMP	% FIXTURE
0-30	1064	26	33
0-40	1707	42	53
0-60	2771	68	85
0-90	3242	79	100
90-120	0	0	0
90-150	0	0	0
90-180	0	0	0
0-180	3244	79	100

Luminaire Output= 3243.6 lumens  
 Luminaire Efficacy = 108.5 lm/W  
 Luminaire Efficiency = 79.2%

**SPACING CRITERION**

ALONG	ACROSS
1.11	1.11

This Space is intentionally left blank.

This Space is intentionally left blank.

This Space is intentionally left blank.

