



L. A. LIGHTING STOCK ITEMS PRICE SCHEDULE

For Immediate Shipment or Pick-Up !!

Represented By

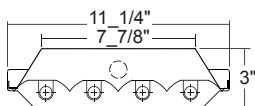
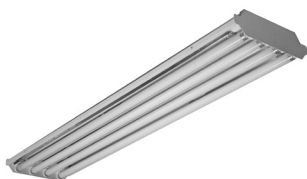
AS OF 02/19/2020



L. A. LIGHTING

Inquiries to: customerservice@lalighting.com

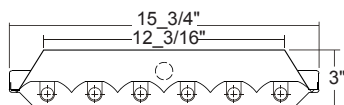
Orders to: orders@lalighting.com



■ **4-Lamp Full Body High Bay**
(95% Enhanced Alum. Refl./ Fully Assembled/ One Per Carton)

HBN100-4-4M-SR-4E5H-UNV (T5HO)

WG11-HBN100 11 GAUGE WIRE GUARD

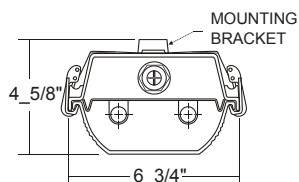
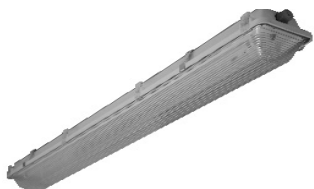


■ **6-Lamp Full Body High Bay**
(95% Enhanced Alum. Refl./ Fully Assembled/ One Per Carton)

HBN200-6-4M-SR-2/4E5H-UNV (T5HO)

HBN200-6-4R-SR-2/4E8IH-UNV (T8 HIGH BF)

WG11-HBN200 11 GAUGE WIRE GUARD



■ **Vapor Tight Wet Location (Fully Assembled / One Per Carton)**

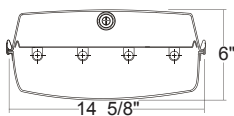
CIT200-2-4M-DRRL-WL-2E5H-UNV IP65 / IP67 / NSF (T5HO)

CIT200-2-8MT-DRRL-WL-4E5H-UNV IP65 / IP67 / NSF (T5HO)

CIT2/SSL4 STAINLESS STEEL LATCHES for 4' CIT200

CIT2/SSL8 STAINLESS STEEL LATCHES for 8' CIT200

CIT2/SSV STAINLESS STEEL CHAIN MOUNT V-HOOK



■ **Vapor Tight Wet Location (Fully Assembled / One Per Carton)**

CIT400-4-4M-DRCA-WL-4E5H-UNV IP67 / NSF (T5HO)

CIT4/SR4 95% SPECULAR REFLECTOR 4-LAMP (FIELD INSTALLED)

CIT4/SR6 95% SPECULAR REFLECTOR 6-LAMP (FIELD INSTALLED)

CIT4/VH STAINLESS STEEL V-HOOK

CIT4/CM CEILING MOUNT HANGER

CIT4/LT LENS TETHER (FIELD INSTALLED)

NOTE : • All "UNV" items are with generic universal voltage ballasts (120V-277V).



L. A. LIGHTING STOCK ITEMS PRICE SCHEDULE

For Immediate Shipment or Pick-Up !!

Represented By

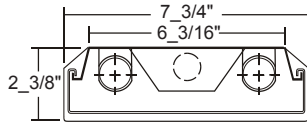
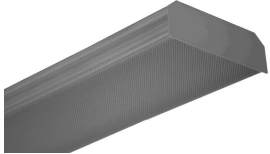
AS OF 02/19/2020



L. A. LIGHTING

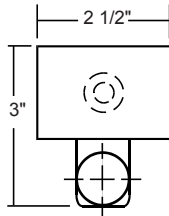
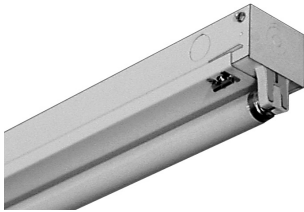
Inquiries to: customerservice@lalighting.com

Orders to: orders@lalighting.com



■ **Wraparound (Fully Assembled / One Per Carton)**

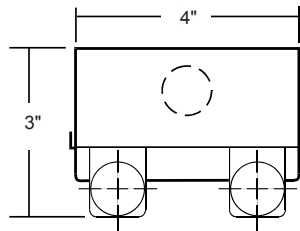
WAN107-2-4R-2E8I-UNV
WAN107-2-8RT-4E8I-UNV



■ **Knocked Down Strip: 1-Lamp Cross Section (One Per Carton)**

KDS100-1-4R-1E8I-UNV
KDS100-1-8RT-2E8I-UNV

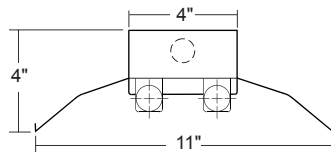
WG14-KDS100 WIRE GUARD (14GA) FOR KDS100 PER 4'



■ **Knocked Down Strip: 2-Lamp Cross Section (One Per Carton)**

KDS200-2-4R-2E8I-UNV
KDS200-2-8RT-4E8I-UNV

WG14-KDS200 WIRE GUARD (14GA) FOR KDS200 PER 4'
CMC-KDS200 12" COUPLING FOR KDS200 & KDI200



■ **Knocked Down Industrial: 2-Lamp Cross Section (One Per Carton)**

KDI200-2-4R-2E8I-UNV
KDI200-2-8RT-4E8I-UNV

WG14-KDI200 WIRE GUARD (14GA) FOR KDI200 PER 4'
CMC-KDI200 12" COUPLING FOR KDS200 & KDI200

NOTE : • All "UNV" items are with generic universal voltage ballasts (120V-277V).