



WALL BRACKET LED

BSW 100 SERIES

OCCUPANCY SENSOR CONTROLLED STAIRWELL WALL BRACKET LUMINAIRE

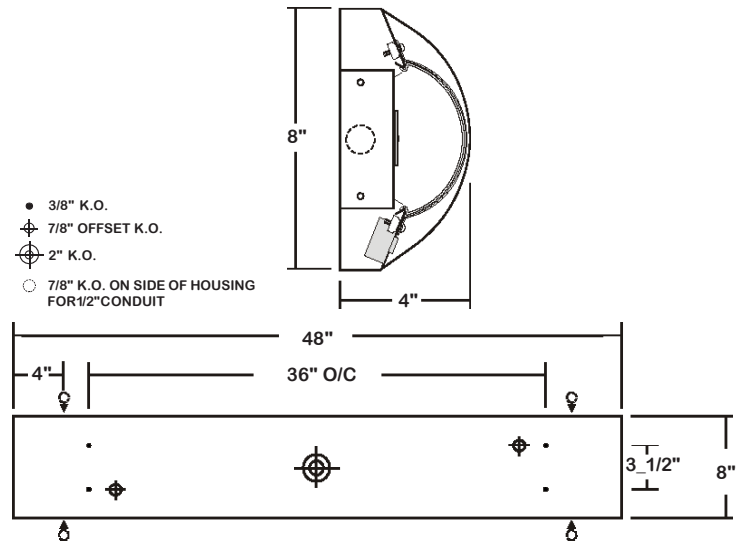
JOB	
TYPE	
DATE	

WWW.LALIGHTING.COM
626-454-8300

WALL MOUNTED LED LUMINAIRE



DIMENSIONS



APPLICATIONS

- Stairwell, Corridors, Restroom

FEATURES

- Wall Mounted LED luminaire
- ADA Compliant
- 0-10V dimming driver standard ([See DRIVER OPTIONS for other dimming types](#))
- Suitable for damp locations
- Supports California Title 24 compliance

OPTIONS

- Full customization available upon request
- Additional lumen packages and color temperatures available
- Controls and sensors available (consult factory for sensor options)
- Wireless control options available ([See SENSOR OPTIONS for wireless controls](#))
- Emergency battery pack available ([See BATTERY PACK OPTIONS for battery pack options](#))
- Custom colors available ([See CUSTOM COLORS For standard and custom options](#))
- Tunable white available (2700K-6500K)
- Lens retainer with tamper proof screws available
- Switch available (consult factory for sensor options)

SPECIFICATIONS

CONSTRUCTION

- 20 ga. cold rolled steel welded housing

FINISH

- Baked white powder coated finish / welded and painted after fabrication / minimum reflectance 90%

OPTICAL

- Frosted white acrylic lens smooth finish (snap-in lens)

ELECTRICAL

- High efficiency drivers coupled with long-life LEDs
- Service life tested at 50,000 hours (L70)
- Universal voltage 120V through 277V (347V / 480V available)
- Power Factor (PF) ≥ 0.9
- Total Harmonic Distortion (THD) ≤ 20%

LISTING

- UL USA and Canada listed / suitable for damp locations

WARRANTY

- 5-year limited warranty standard, 10-year limited warranty available.



Los Angeles Lighting Mfg. Co.
 Headquarters Contact Us
 10141 Olney Street T: 626-454-8300
 El Monte, CA 91731 F: 626-454-8399
 Made in the USA www.lalighting.com



BAA Compliant



Due to continued product improvements and enhancements, Los Angeles Lighting Manufacturing Company reserves the right to alter specifications, dimensions, data, and/or materials without notice. Please visit our website to view the most current information.



MADE IN THE U.S.A.

Revised 03/25/20

WARNING

BSW100 SERIES OCCUPANCY SENSOR CONTROLLED STAIRWELL WALL BRACKET LUMINAIRE LED WALL BRACKET

ORDERING INFORMATION EXAMPLE: BSW100-4-4L-TP-MSU-BPL1.5-DRDM-UNV-1/840

SERIES	LED LUMEN PACKAGE	EFFICACY	NOMINAL LENGTH	MECHANICAL	CONTROL OPTIONS	ELECTRICAL	DRIVER	VOLTAGE	# OF LED ROW	CRI / CCT
BSW100			4L				DRDM	UNV	1	
BSW100 Occupancy Sensor Controlled Stairwell Wall Bracket LED Luminaire	2 Nom. 2000 Lumens 4 Nom. 4000 Lumens 6 Nom. 6000 Lumens 8 Nom. 8000 Lumens 12 Nom. 12000 Lumens *Additional Lumen Packages Available	(Blank) Standard HE High Efficacy (Only 2000 / 4000 / 6000 lumens Systems)	4L 4'	(Blank) Standard TP Lens Retainer with Tamper Proof Screws (Hex Socket with Pad) *Leave Blank if Not Specified <i>Additional Mechanical Options</i>	MSU Motion Sensor Ultrasonic MSUSD Motion Sensor Ultrasonic – Step Dimming MSUSDO Motion Sensor Ultrasonic – Step Dimming-to-Off XX No Motion Sensor <i>See SENSOR CONFIGURATION for Options</i>	BPL 1.5 Emergency Battery Pack, Nom. 1500 lm <i>See BATTERY PACK OPTIONS for Options</i> WLC(LED RU) EnOcean Wireless Control <i>See SENSOR OPTIONS for Options</i> *Leave Blank if Not Specified <i>Additional Electrical Options</i>	DRDM 0-10V Dimming Driver <i>See DRIVER OPTIONS for Options</i>	UNV 120V-277V <i>See DRIVER OPTIONS for Options</i>	1 One LED Row	830 80+CRI / 3000K Color Temp. 835 80+CRI / 3500K Color Temp. 840 80+CRI / 4000K Color Temp. 850 80+CRI / 5000K Color Temp. 8TW Tunable White 827 to 865 *Additional Color Temp. Available

SYSTEM DATA

LED LUMEN PACKAGE	NORMAL AMBIENT TEMPERATURE PRODUCT CODE	DELIVERED LUMENS	SYSTEM WATTS	LUMINAIRE EFFICACY	AMBIENT TEMP.	FLUORESCENT EQUIVALENT	IES FILES
2000 Lumens (Nominal)	BSW100-2-4L-MSU-DRDM-UNV-1/840	2042 lm	15.7 W	129.9 lm/W	-20°C / 35°C	1-F32T8	*
4000 Lumens (Nominal)	BSW100-4-4L-MSU-DRDM-UNV-1/840	3901 lm	* 33.1 W	117.7 lm/W	-20°C / 35°C	2-F32T8, 1-F54T5HO	LA-T3358
6000 Lumens (Nominal)	BSW100-6-4L-MSU-DRDM-UNV-1/840	5576 lm	52.3 W	106.6 lm/W	-20°C / 35°C	3-F32T8	*
8000 Lumens (Nominal)	BSW100-8-4L-MSU-DRDM-UNV-1/840	*	*	*	-20°C / 35°C	*	*
12000 Lumens (Nominal)	BSW100-12-4L-MSU-DRDM-UNV-1/840	*	*	*	-20°C / 35°C	*	*

LED LUMEN PACKAGE	NORMAL AMBIENT TEMPERATURE (HIGH EFFICACY) PRODUCT CODE	DELIVERED LUMENS	SYSTEM WATTS	LUMINAIRE EFFICACY	AMBIENT TEMP.	FLUORESCENT EQUIVALENT	IES FILES
2000 Lumens (Nominal)	BSW100-2HE-4L-MSU-DRDM-UNV-1/840	2049 lm	12.6 W	163.2 lm/W	-20°C / 35°C	1-F32T8	*
4000 Lumens (Nominal)	BSW100-4HE-4L-MSU-DRDM-UNV-1/840	3642 lm	23.2 W	157.1 lm/W	-20°C / 35°C	2-F32T8, 1-F54T5HO	LA-T3358
6000 Lumens (Nominal)	BSW100-6HE-4L-MSU-DRDM-UNV-1/840	5502 lm	36.8 W	149.5 lm/W	-20°C / 35°C	3-F32T8	*

NOTE:
System data above is based on 120V input voltage.
Actual performance may differ as a result of end-user environment and application.
This fixture has been tested and listed in accordance with UL Standards. L.A. Lighting certifies that it will operate safely when installed properly, and within an ambient temperature range from -20°C to 40°C.

Additional lumen packages and color temperatures available.

CUSTOM COLORS

BLK - Matte Black

CS - Camaro Silver

BZ - Statuary Bronze

Variety of RAL colors



Los Angeles Lighting Mfg. Co.
Headquarters Contact Us
10141 Olney Street T: 626-454-8300
El Monte, CA 91731 F: 626-454-8399
Made in the USA www.lalighting.com



BAA Compliant



Due to continued product improvements and enhancements, Los Angeles Lighting Manufacturing Company reserves the right to alter specifications, dimensions, data, and/or materials without notice. Please visit our website to view the most current information.



MADE IN THE U.S.A.

Revised 03/25/20

WARNING

DRIVER OPTIONS

PLEASE CONSULT FACTORY TO SEE IF YOUR SELECTED DRIVER OPTION WORKS WITH THIS FIXTURE.

DRDM - UNV

* Normal Stock Item

VOLTAGE

- 120V** 120 Volt
- 277V** 277 Volt
- UNV*** Universal 120-277 Volt
- 347V** 347 Volt
- 480V** 480 Volt

DRIVER TYPE

- DRDM*** 0-10V Dimming Driver
- DRDM1** 0-10V Dimming Driver, 1% Dimming
- DRDM2C** 2-Channel 0-10V Dimming Driver (for Color Tunable White)
- DR2W** 2-Wire Phase Dimming Driver
- DRDA** Digital Addressable DALI Dimming Driver
- DRDA2C** Digital Addressable DALI Type8 2-Channel Driver (for Color Tunable White)
- DRDA2.0** Digital Addressable DALI 2.0 Dimming Driver
- DRDA2.02C** Digital Addressable DALI 2.0 Type8 2-Channel Driver (for Color Tunable White)
- DRSD** Step Dimming Driver
- DR(LTEA2W)** Lutron® 2-Wire 1% Dimming Driver (120V Forward Phase only)
- DR(LDE1)** Lutron® EcoSystem 1% Soft-On, Fade-to-Black™ Dimming Driver
- DR(LDE5)** Lutron® EcoSystem 5% Dimming Driver
- DR(PEQ0)** Lutron® EcoSystem 0.1% Soft-On, Fade-to-Black Dimming Driver
- DR(PSQ0)** Lutron® T-Series Digital 1% Dimming 2-Channel Driver (for Color Tunable White)
- DRCR** Control Ready Driver
- DRCR(DXL)** Osram Dexas Driver
- DRCR(SR)** Philips Sensor Ready Driver

BATTERY PACK OPTIONS

PLEASE CONSULT FACTORY TO SEE IF YOUR SELECTED BATTERY PACK OPTION WORKS WITH THIS FIXTURE.

LED EMERGENCY BATTERY PACKS (Operate for 90 minutes unless otherwise specified)

BPL

NOTE

(2h) 2 hours

LUMEN PACKAGE

- 0.7** Nominal 750 Lumens
- 1.5** Nominal 1500 Lumens
- 3.0** Nominal 3000 Lumens
- *Additional lumen packages available

TYPE

- (Blank)** Normal Ambient Temp. / Standard Operation
- C** Cold Environment (-20°C)
- F** With Flex for Remote Mounting
- SL** Slim Casing
- ST** Self Test / Diagnostic
- *Additional options available



Los Angeles Lighting Mfg. Co.
 Headquarters Contact Us
 10141 Olney Street T: 626-454-8300
 El Monte, CA 91731 F: 626-454-8399
 Made in the USA www.lalighting.com



BAA Compliant



Due to continued product improvements and enhancements, Los Angeles Lighting Manufacturing Company reserves the right to alter specifications, dimensions, data, and/or materials without notice. Please visit our website to view the most current information.



MADE IN THE U.S.A.

Revised 03/25/20

WARNING

SENSOR OPTIONS

MOTION SENSOR OPTIONS

MSU - Motion Sensor Ultrasonic

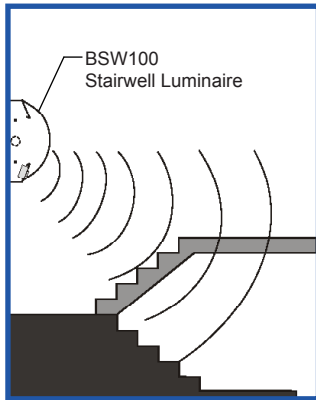
- Turns light ON/OFF based on motion detection
- Holds light ON at 100% for 10 minutes, after 10 minutes with no motion, light will turn OFF
- Universal Voltage (120V-277V)
- Ultrasonic occupancy sensor for wall mount applications
- Sensor mounted at 20° from vertical for optimum sensor performance
- 24' diameter coverage at 8' mounting height
- Time delay 1 adjustable 5 seconds to 30 minutes
- Time delay 2 adjustable 10 seconds to ∞

MSUSD - Motion Sensor Ultrasonic – Step Dimming

- Full ON when motion is detected
- Holds light ON at 100% for 10 minutes
- After 10 minutes with no motion, light will dim down to 25% until motion is detected again
- Universal Voltage (120V-277V)

MSUSDO - Motion Sensor Ultrasonic – Step Dimming-to-Off

- Full ON when motion is detected
- Holds light ON at 100% for 15 minutes
- After 15 minutes with no motion, light will dim down to 25% for 45 minutes and then OFF, until motion is detected again
- Universal Voltage (120V-277V)



WIRELESS MOTION SENSOR OPTIONS



CONTROLS AND SENSORS

WLC(LED RU) - EnOcean® LED Relay Zone Controller

- Supports a single LED fixture or multiple daisy chained LED fixtures
- Module installed inside lighting fixture

ESRPU-W-EO - EnOcean® Rocker Switch – Single – Surface Mount

- Wireless single rocker switch with mounting plate
- No batteries needed

EDRPU-W-EO - EnOcean® Rocker Switch – Double – Surface Mount

- Wireless double rocker switch with mounting plate
- No batteries needed

S3054-N300 - EnOcean® Navigan NWC 300U – Commissioning Tool

- Navigan Wireless Commissioner is used to configure EnOcean controllers & sensors
- It can be used to define link tables, change parameters/settings, and to edit & store projects
- Configuration settings can be saved and cloned to enable quick configuration
- Connectivity is through the NWC 300U USB Stick

EOSWU-W-EO - EnOcean® Occupancy Sensor – Wall Mount

- Wireless wall mounted occupancy sensor
- Solar powered - no batteries needed (coin battery operated in low light conditions)
- PIR motion sensor with both wide angle (50°) and long range (100') options
- Mounting height: 6-8 feet

EOSCU-W-EO - EnOcean® Occupancy Sensor – Ceiling Mount

- Wireless ceiling mounted occupancy sensor
- Solar powered - no batteries needed (coin battery operated in low light conditions)
- PIR motion sensor with 360 degree viewing angle lens (34' diameter)
- Mounting height: 7-10 feet

ELLSU-W-EO - EnOcean® Light Level Sensor – Ceiling Mount

- Light Level sensor that measures and reports the level of available natural light
- Solar powered - no batteries needed (coin battery operated in low light conditions)
- Enables implementation of daylight harvesting control systems
- Mounting position: At the ceiling, close to ambient light source



Los Angeles Lighting Mfg. Co.
 Headquarters Contact Us
 10141 Olney Street T: 626-454-8300
 El Monte, CA 91731 F: 626-454-8399
 Made in the USA www.lalighting.com



BAA Compliant



Due to continued product improvements and enhancements, Los Angeles Lighting Manufacturing Company reserves the right to alter specifications, dimensions, data, and/or materials without notice. Please visit our website to view the most current information.



MADE IN THE U.S.A.

Revised 03/25/20
WARNING