

LED T8 - BAYLIGHTER™

EBY450 SERIES

High Bay Luminaire



- High Bay Luminaire For LED T8 Internal Driver Light Tube (by Others)
- T-Hinge and spring Loaded Latch
- Removable Wiring Accessed Plate
- Stem, Cable, and Chain Mountable
- Quarter Turn Rotary Locking Sockets
- Door Frame Safety Cables

- Available with :
 - Heavy Duty Safety Switch
 - .040 Aluminum Fixture Housing
 - Variety of Lenses
 - 11ga. Wire Guard



LOS ANGELES LIGHTING MFG. CO.

10141 OLNEY ST. / EL MONTE, CA 91731

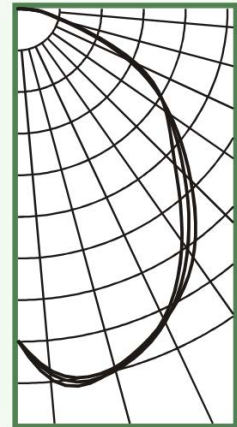
<http://www.lalighting.com>

TEL : 626-454-8300 FAX : 626-454-8399



EBY450-8-4L-CA-LED8

TEST NO.=I A-T1813
 LAMP TYPE=LED T8, 4'
 NO. OF LAMP=8
 LUMENS PER LAMP=1300
 WATTS PER LAMP=15
 BALLAST FACTOR=1
 PHOTOMETRY TYPE=C



CANDLEPOWER

Angle	End	45	Cross
0	2944	2944	2944
5	3296	3246	3215
15	3303	3322	3293
25	3052	3067	3036
35	2692	2605	2517
45	2152	2073	1957
55	1635	1610	1592
65	1075	1131	1151
75	422	451	439
85	177	168	163
90	29	28	27
95	0	0	0
105	0	0	0
115	0	0	0
125	0	0	0
135	0	0	0
145	0	0	0
155	0	0	0
165	0	0	0
175	0	0	0
180	0	0	0

ZONAL LUMEN SUMMARY

DEGREES	LUMENS	% LAMP	% FIXTURE
0-30	2661	25.6	29.3
0-40	4298	41.3	47.4
0-60	7342	70.6	80.9
0-90	9067	87.2	99.9
90-120	8	0.1	0.1
90-150	8	0.1	0.1
90-180	8	0.1	0.1
0-180	9075	87.3	100.0

Luminaire Efficiency = 87.3%

SPACING CRITERION

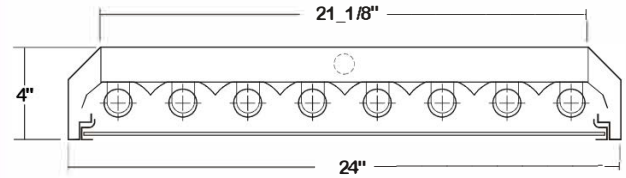
ALONG	ACROSS
1.40	1.34

LED T8 - BAYLIGHTER™



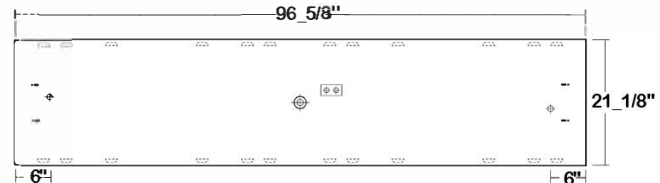
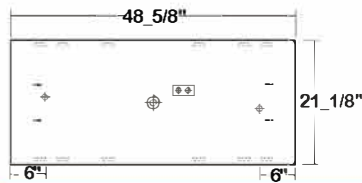
EBY450 SERIES - LED T8

CROSS SECTION



BACK PLATE

- V-HOOK
- ⊕ 7/8" OFFSET K.O.
- ⊕ 2" K.O.
- ⊕ ACCESS PLATE



CATALOG NUMBER

	NOMINAL LENGTH	TOTAL LAMPS		NOMINAL LENGTH	TOTAL LAMPS
EBY450-6-4LI	4'	6	EBY450-6-8LIT	8'	12
EBY450-6-4LR	4'	6	EBY450-6-8LRT	8'	12
EBY450-7-4LI	4'	7	EBY450-7-8LIT	8'	14
EBY450-7-4LR	4'	7	EBY450-7-8LRT	8'	14
EBY450-8-4LI	4'	8	EBY450-8-8LIT	8'	16
EBY450 8 4LR	4'	8	EBY450 8 8LRT	8'	16

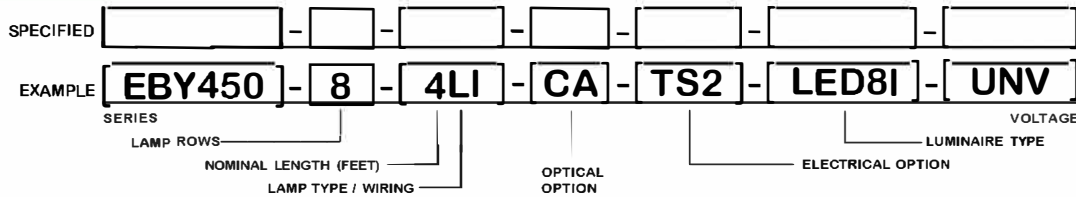
SAFETY SWITCH

TS2 - LED Luminaire On/Off Safety Switch



- Easily accessible on exterior of wire way.
- Allows individual fixture to be switched ON/OFF during re-lamping or Maintenance.
- Prevents damage to lamp and electrical shock during lamping and re-lamping.
- Allows safe entry to wire way channel where power connector can be disconnected for maintenance to fixture.

ORDERING GUIDE



LAMP TYPE

LI = LED T8 internal driver light tube.
Both ends powered.
Shunted sockets used.



LR = LED T8 internal driver light tube.
Single end powered.
Non-shunted sockets used.



OPTIONS AND ACCESSORIES

● **OPTICAL OPTIONS**

- Clear Acrylic
- Clear Prismatic Acrylic
- Flat White Acrylic
- * Other Lens Available Upon Request

SUFFIX

- CA
- PA
- FWA

● **ELECTRICAL OPTIONS**

- LED Luminaire ON/OFF Safety Switch
- Motion Sensor

SUFFIX

- TS2
- MS

● **ACCESSORIES**

- Wire Guard - 11 Ga.
- Fixture Suspension System
- Ceiling Spacer
- 6" Leg Height V-Hook

CAT.NO.

- WG11-EBY450
- *
- *
- V6

*See Appropriate Reference Page

SPECIFICATIONS

- **TYPE**
- **CONSTRUCTION**
- **FINISH**
- **DOOR FRAME**
- **OPTICS**
- **WIRE GUARDS**
- **WIRING**
- **LABELS**

High bay open light luminaire for surface, pendant, or chain mounting for LED T8 internal driver light tube(s)**.
22 gauge cold rolled steel housing with louvered vents on top for heat removal.
Quarter turn rotary locking lampholders standard. (20 ga. C.R.S. and .040 aluminum housing available as specified)
Baked white polyester finish, minimum reflectance 86%. (Powder coated finish available.)
20 ga. cold rolled steel door frame. T-hinge and positive spring loaded latches. Safety cables attached.
Nom. 125 clear acrylic lens standard. Extensive variety of lenses, diffusers and louvers available.
11 ga. Chrome epoxy powder coated.
Operates LED T8 internal driver light tube(s)**.
U.L. Listed. Suitable for damp locations.

** Lamp(s) by others.

