



STRIP LIGHT

STR100

SERIES 2FT, 4FT, 8FT
 @ 2 1/2" WIDE OPEN STRIP CHANNEL LED LUMINAIRE



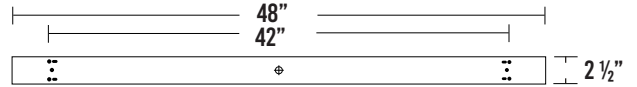
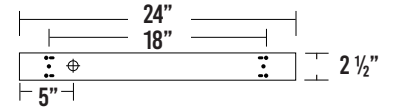
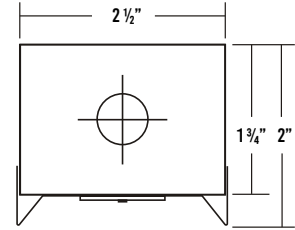
JOB	
TYPE	
DATE	

WWW.LALIGHTING.COM TEL: 626-454-8300

SURFACE/SUSPENDED/WALL MOUNTED LED LUMINAIRE

DIMENSIONS

- 3/16" MOUNTING HOLE
- 7/8" K.O.
- V-HOOK HOLE



SPECIFICATIONS

CONSTRUCTION

- 22 gauge cold-rolled steel housing
- End plates fastened to housing by sheet metal screws to assure rigidity

FINISH

- Baked white polyester finish
- Minimum reflectance 86%

ELECTRICAL

- High-efficiency drivers coupled with long-life LEDs
- Service life tested at 50,000 hours (L70)
- Universal voltage 120V through 277V (347V / 480V available)
- Power Factor (PF) ≥ 0.9
- Total Harmonic Distortion (THD) ≤ 20%

LISTING

- UL USA and Canada listed / suitable for dry location only

WARRANTY

- 5-Year limited warranty standard. 10-Year limited warranty also available

APPLICATIONS

- Warehouse, Commercial, Industrial

FEATURES

- 0-10V Dimming driver standard
- End plates may be used as channel couplings for continuous row mounting (surface mounted applications only)
- Supports California Title 24 compliance

OPTIONS CONTACT CUSTOMER SERVICE FOR ADDITIONAL OPTIONS

- Controls
- 24 gauge cold-rolled steel reflector
- 14 gauge wire guard
- Custom housing colors
- Plug-in branch wiring connector system
- Cord & Plug
- Emergency battery pack
- Tunable white (2700K - 6500K)
- Customization available upon request
- Cable suspension systems
- Chain mount

CUSTOM COLORS

BLK - Matte Black

CS - Camaro Silver

BZ - Statuary Bronze



Variety of RAL colors available upon request.



Los Angeles Lighting Mfg. Co.
 Contact Us
 T: 626-454-8300 10141 Olney Street
 F: 626-454-8399 El Monte, CA 91731
 www.lalighting.com Made in the USA



Due to continued product improvements and enhancements, Los Angeles Lighting Manufacturing Company reserves the right to alter specifications, dimensions, data, and/or materials without notice. Please visit our website to view the most current information.

© 2022 LOS ANGELES LIGHTING MANUFACTURING CO. ALL RIGHTS RESERVED.

Revised: 01/05/2023



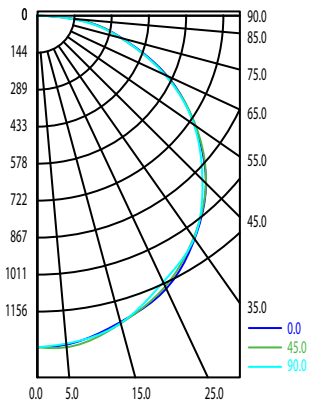
ORDERING INFORMATION

ADDITIONAL OPTIONS AVAILABLE. VISIT WWW.LALIGHTING.COM/RESOURCES FOR MORE INFORMATION

EXAMPLE: STR100-4-4L-BPLSL1.5-DRDM-UNV-1/840

SERIES	NOMINAL LED LUMENS	NOMINAL LENGTH	REFLECTOR	CONTROLS	ELECTRICAL	DRIVER	VOLTAGE	# OF LED ROWS	CRI / CCT	
STR100								1		
STR100 • 2½" Wide Open Strip Channel Luminaire	1 - 1000lm 2 - 2000lm 3 - 3000lm 4 - 4000lm 5 - 5000lm	2L • 2ft	RA • 3-Bend Asymmetrical RB • 90° 1-Bend Asymmetrical RC • 45° 1-Bend Asymmetrical	WLC(LED RU) ¹ • Wireless Control MS ¹ • Motion Sensor *Leave blank if not specified	BPLSL1.5 ² • Emergency Battery Pack Slim Casing 1500 lm PIW(xx) • Plug-in Branch Wiring Connector • One or Two Circuit • Low Voltage Dimming C(xx) • Cord 18 ga. 3-wire • Plug Options • NEMA Plug Type • Length of Cord • Location on the fixture *Leave blank if not specified	DRDM • 0-10V Dimming Driver DRSD • Step Dimming Driver DR2W • 2-Wire Phase Dimming Driver • Requires Specific Voltage Callout	UNV • 120V-277V 120V • 120 Volt 277V • 277 Volt 347V • 347 Volt 480V • 480 Volt	1 • 1 LED Row	830 • 80+CRI / 3000K 835 • 80+CRI / 3500K 840 • 80+CRI / 4000K 850 • 80+CRI / 5000K 8TW • 80+CRI Tunable White 2700K-6500K <i>Contact customer service for additional CRI / CCT packages, including 90CRI</i>	
	2 - 2000lm 4 - 4000lm 6 - 6000lm 8 - 8000lm 10 - 10000lm	4L • 4ft	RD • 2-Bend Asymmetrical 2RC • 45° Symmetrical *Leave blank if not specified							
	4 - 4000lm 8 - 8000lm 12 - 12000lm 16 - 16000lm 20 - 20000lm	8L • 8ft								
<p>High Efficacy 1HE - 1000lm 2HE - 2000lm 3HE - 3000lm</p> <p>High Efficacy 2HE - 2000lm 4HE - 4000lm 6HE - 6000lm</p> <p>High Efficacy 4HE - 4000lm 8HE - 8000lm 12HE - 12000lm</p>										
<p>Standard options for STR100 shown above. For additional options, including lumen packages, controls, lenses, switches, finishes, and more, visit www.lalighting.com/resources or contact customer service.</p> <p>¹ Must be end-mounted externally. ² Emergency battery not available for 2' length.</p>										

PHOTOMETRIC DATA



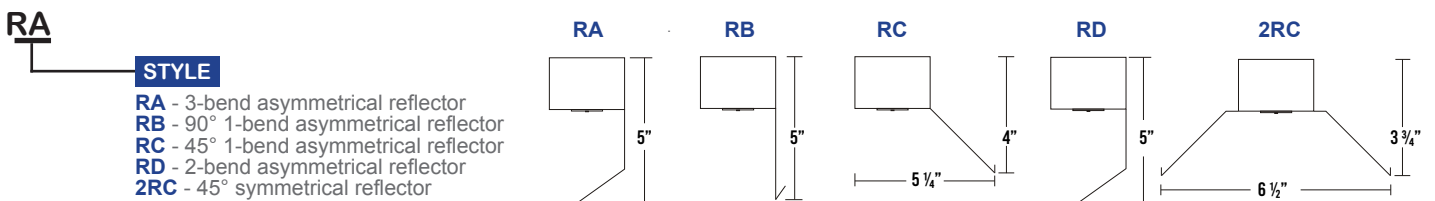
STR100-4-4L-DRDM-UNV-1/840
TEST NO. = LA-T3878b
LED TYPE = 56 LED MODULE
NO. OF MODULE = 1
SYSTEM WATT (W) = 26.7
CRI ≥ 80
L70(Hrs.) ≥ 50,000
PHOTOMETRY TYPE = C

ZONAL LUMEN SUMMARY			
DEGREES	LUMENS	% LAMP	% FIXTURE
0-30	1016	24.88	24.89
0-40	1682	41.18	41.20
0-60	3067	75.07	75.10
0-90	4083	99.94	99.98
90-120	0	0	0.02
90-150	0	0	0.02
90-180	0	0	0.02
0-180	4084	99.96	100.00

SPACING CRITERION	
ALONG	ACROSS
1.29	1.41

Luminaire Output = 4084 lm
Luminaire Efficacy = 152.9 lm/W
Luminaire Efficiency = 99.96%

REFLECTORS



Los Angeles Lighting Mfg. Co.
 Contact Us
 T: 626-454-8300 10141 Olney Street
 F: 626-454-8399 El Monte, CA 91731
www.lalighting.com Made in the USA



Due to continued product improvements and enhancements, Los Angeles Lighting Manufacturing Company reserves the right to alter specifications, dimensions, data, and/or materials without notice. Please visit our website to view the most current information.
 © 2022 LOS ANGELES LIGHTING MANUFACTURING CO. ALL RIGHTS RESERVED. Revised: 01/05/2023



SYSTEM DATA

ADDITIONAL LUMEN PACKAGES AVAILABLE. CONTACT CUSTOMER SERVICE FOR MORE INFORMATION

2' - LED LUMEN PACKAGE	NORMAL AMBIENT TEMPERATURE PRODUCT CODE	DELIVERED LUMENS	SYSTEM WATTS	LUMINAIRE EFFICACY	AMBIENT TEMP.	FLUORESCENT EQUIVALENT	IES FILES
1000 Lumens (Nominal)	STR100-1-2L-DRDM-UNV-1/840	1040 lm	7.6	136.2 lm/W	-20°C / 35°C (-4°F / 95°F)	1-F17T8	*
2000 Lumens (Nominal)	STR100-2-2L-DRDM-UNV-1/840	2042 lm	14.1	144.5 lm/W	-20°C / 35°C (-4°F / 95°F)	2-F17T8 1-F24T5HO	Download
3000 Lumens (Nominal)	STR100-3-2L-DRDM-UNV-1/840	3181 lm	22.1	143.8 lm/W	-20°C / 35°C (-4°F / 95°F)	3-F17T8	*
4000 Lumens (Nominal)	STR100-4-2L-DRDM-UNV-1/840	4139 lm	27.2	151.7 lm/W	-20°C / 35°C (-4°F / 95°F)	4-F17T8 2-F24T5HO	*
5000 Lumens (Nominal)	STR100-5-2L-DRDM-UNV-1/840	5064 lm	32.6	155.1 lm/W	-20°C / 35°C (-4°F / 95°F)	5-F17T8	*
2' - LED LUMEN PACKAGE	NORMAL AMBIENT TEMPERATURE (HIGH EFFICACY) PRODUCT CODE	DELIVERED LUMENS	SYSTEM WATTS	LUMINAIRE EFFICACY	AMBIENT TEMP.	FLUORESCENT EQUIVALENT	IES FILES
1000 Lumens (Nominal)	STR100-1HE-2L-DRDM-UNV-1/840	1124 lm	7.5	149.9 lm/W	-20°C / 35°C (-4°F / 95°F)	1-F17T8	*
2000 Lumens (Nominal)	STR100-2HE-2L-DRDM-UNV-1/840	1999 lm	12.3	161.5 lm/W	-20°C / 35°C (-4°F / 95°F)	2-F17T8 1-F24T5HO	*
3000 Lumens (Nominal)	STR100-3HE-2L-DRDM-UNV-1/840	3020 lm	18.6	161.6 lm/W	-20°C / 35°C (-4°F / 95°F)	3-F17T8	*
4' - LED LUMEN PACKAGE	NORMAL AMBIENT TEMPERATURE PRODUCT CODE	DELIVERED LUMENS	SYSTEM WATTS	LUMINAIRE EFFICACY	AMBIENT TEMP.	FLUORESCENT EQUIVALENT	IES FILES
2000 Lumens (Nominal)	STR100-2-4L-DRDM-UNV-1/840	2080 lm	13.4	155.0 lm/W	-20°C / 35°C (-4°F / 95°F)	1-F32T8	*
4000 Lumens (Nominal)	STR100-4-4L-DRDM-UNV-1/840	4084 lm	26.7	152.9 lm/W	-20°C / 35°C (-4°F / 95°F)	2-F32T8 1-F54T5HO	Download
6000 Lumens (Nominal)	STR100-6-4L-DRDM-UNV-1/840	6360 lm	43.6	145.6 lm/W	-20°C / 35°C (-4°F / 95°F)	3-F32T8	*
8000 Lumens (Nominal)	STR100-8-4L-DRDM-UNV-1/840	8278 lm	50.8	162.8 lm/W	-20°C / 35°C (-4°F / 95°F)	4-F32T8 2-F54T5HO	*
10000 Lumens (Nominal)	STR100-10-4L-DRDM-UNV-1/840	10127 lm	61.4	164.7 lm/W	-20°C / 35°C (-4°F / 95°F)	4-F32T8 2-F54T5HO	*
4' - LED LUMEN PACKAGE	NORMAL AMBIENT TEMPERATURE (HIGH EFFICACY) PRODUCT CODE	DELIVERED LUMENS	SYSTEM WATTS	LUMINAIRE EFFICACY	AMBIENT TEMP.	FLUORESCENT EQUIVALENT	IES FILES
2000 Lumens (Nominal)	STR100-2HE-4L-DRDM-UNV-1/840	2249 lm	13.5	166.0 lm/W	-20°C / 35°C (-4°F / 95°F)	1-F32T8	*
4000 Lumens (Nominal)	STR100-4HE-4L-DRDM-UNV-1/840	3998 lm	23.4	170.4 lm/W	-20°C / 35°C (-4°F / 95°F)	2-F32T8 1-F54T5HO	*
6000 Lumens (Nominal)	STR100-6HE-4L-DRDM-UNV-1/840	6429 lm	38.4	167.4 lm/W	-20°C / 35°C (-4°F / 95°F)	3-F32T8	*
8' - LED LUMEN PACKAGE	NORMAL AMBIENT TEMPERATURE PRODUCT CODE	DELIVERED LUMENS	SYSTEM WATTS	LUMINAIRE EFFICACY	AMBIENT TEMP.	FLUORESCENT EQUIVALENT	IES FILES
4000 Lumens (Nominal)	STR100-4-8L-DRDM-UNV-1/840	4160 lm	25.7	161.4 lm/W	-20°C / 35°C (-4°F / 95°F)	2-F32T8 1-F54T5HO	*
8000 Lumens (Nominal)	STR100-8-8L-DRDM-UNV-1/840	8169 lm	52.6	155.1 lm/W	-20°C / 35°C (-4°F / 95°F)	4-F32T8 2-F54T5HO	Download
12000 Lumens (Nominal)	STR100-12-8L-DRDM-UNV-1/840	12353 lm	81.9	150.7 lm/W	-20°C / 35°C (-4°F / 95°F)	6-F32T8 3-F54T5HO	*
16000 Lumens (Nominal)	STR100-16-8L-DRDM-UNV-1/840	16202 lm	99.2	163.3 lm/W	-20°C / 35°C (-4°F / 95°F)	8-F32T8 4-F54T5HO	*
20000 Lumens (Nominal)	STR100-20-8L-DRDM-UNV-1/840	20255 lm	122.9	164.7 lm/W	-20°C / 35°C (-4°F / 95°F)	8-F32T8 4-F54T5HO	*
8' - LED LUMEN PACKAGE	NORMAL AMBIENT TEMPERATURE (HIGH EFFICACY) PRODUCT CODE	DELIVERED LUMENS	SYSTEM WATTS	LUMINAIRE EFFICACY	AMBIENT TEMP.	FLUORESCENT EQUIVALENT	IES FILES
4000 Lumens (Nominal)	STR100-4HE-8L-DRDM-UNV-1/840	4047 lm	22.7	178.0 lm/W	-20°C / 35°C (-4°F / 95°F)	2-F32T8	*
8000 Lumens (Nominal)	STR100-8HE-8L-DRDM-UNV-1/840	7996 lm	45.2	176.5 lm/W	-20°C / 35°C (-4°F / 95°F)	4-F32T8 2-F54T5HO	*
12000 Lumens (Nominal)	STR100-12HE-8L-DRDM-UNV-1/840	12080 lm	71.1	169.8 lm/W	-20°C / 35°C (-4°F / 95°F)	6-F32T8 3-F54T5HO	*



Los Angeles Lighting Mfg. Co.

Contact Us

T: 626-454-8300
F: 626-454-8399
www.lalighting.com

10141 Olney Street
El Monte, CA 91731
Made in the USA



Due to continued product improvements and enhancements, Los Angeles Lighting Manufacturing Company reserves the right to alter specifications, dimensions, data, and/or materials without notice. Please visit our website to view the most current information.

© 2022 LOS ANGELES LIGHTING MANUFACTURING CO. ALL RIGHTS RESERVED.

Revised: 01/05/2023



MADE IN THE USA
BAA Compliant

DRIVER OPTIONS

DRDM () () UNV

VOLTAGE

- UNV** Universal 120-277V (For DR2W Driver Type) **Standard Stock Item*
- 120V** 120 Volt (For DR2W Driver Type)
- 277V** 277 Volt (For DR2W Driver Type)
- 347V** 347 Volt
- 480V** 480 Volt

SPECIFIC DRIVER

- XXX** Manufacturer's Name/Part Number
- Blank** Not Specified

WARRANTY

- Blank** 5-Year Limited Warranty - Standard
- TY** 10-Year Limited Warranty

DRIVER TYPE

- DRDM** 0-10V Dimming Driver **Standard Stock Item*
- DRDM1** 0-10V Dimming Driver, 1% Dimming
- DRDM2C** 2-Channel 0-10V Dimming Driver (for Color Tunable White)
- DR2W** 2-Wire Phase Dimming Driver (TRIAC, Mark 10) Please Specify Voltage in Voltage Field
- DRDA** Digital Addressable DALI Dimming Driver
- DRDA2C** Digital Addressable DALI Type 8, 2-Channel Driver (for Color Tunable White)
- DRSD** Step Dimming Driver
- DR(LTEA2W)** Lutron® 2-Wire, 1% Dimming Driver (120V Forward Phase only)
- DR(LDE1)** Lutron® EcoSystem 1% Soft-On, Fade-to-Black
- DR(PEQ0E)** Lutron® EcoSystem 0.1% Soft-On, Fade-to-Black Dimming Driver
- DR(PSQ020)** Lutron® T-Series Digital 1% Dimming 2-Channel Driver (for Color Tunable White)
- DRCR(DXL)** Osram Dexas Driver
- DRCR(SR)** Signify Sensor Ready Driver
- DRCR(XXX)** Control Ready Driver (Specify Driver Manufacturer)

BATTERY PACK OPTIONS

BPL 1.5 (2H)

LED EMERGENCY BATTERY PACKS

Minimum 90-minute operation unless otherwise noted

OTHER SPECIFICATION (Manufacturer, Run Time, etc.)

- 2H** 2 Hours

LUMEN PACKAGE

- 0.7** Nominal 750 Lumens
- 1.5** Nominal 1500 Lumens **Standard Stock Item*
- 3.0** Nominal 3000 Lumens
- 4.0** Nominal 4000 Lumens
(Additional lumen packages available)

TYPE

- (Blank)** Normal Ambient Temp. / Standard Operation
- C** Cold Environment (-20°C)
- F** Flex Cable for Remote Mounting
- SL** Slim Casing
- ST** Self Test / Diagnostic



Los Angeles Lighting Mfg. Co.
 Contact Us
 T: 626-454-8300 10141 Olney Street
 F: 626-454-8399 El Monte, CA 91731
 www.lalighting.com Made in the USA



Due to continued product improvements and enhancements, Los Angeles Lighting Manufacturing Company reserves the right to alter specifications, dimensions, data, and/or materials without notice. Please visit our website to view the most current information.

© 2022 LOS ANGELES LIGHTING MANUFACTURING CO. ALL RIGHTS RESERVED.

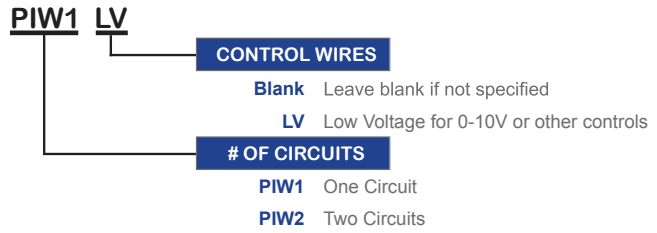
Revised: 01/05/2023



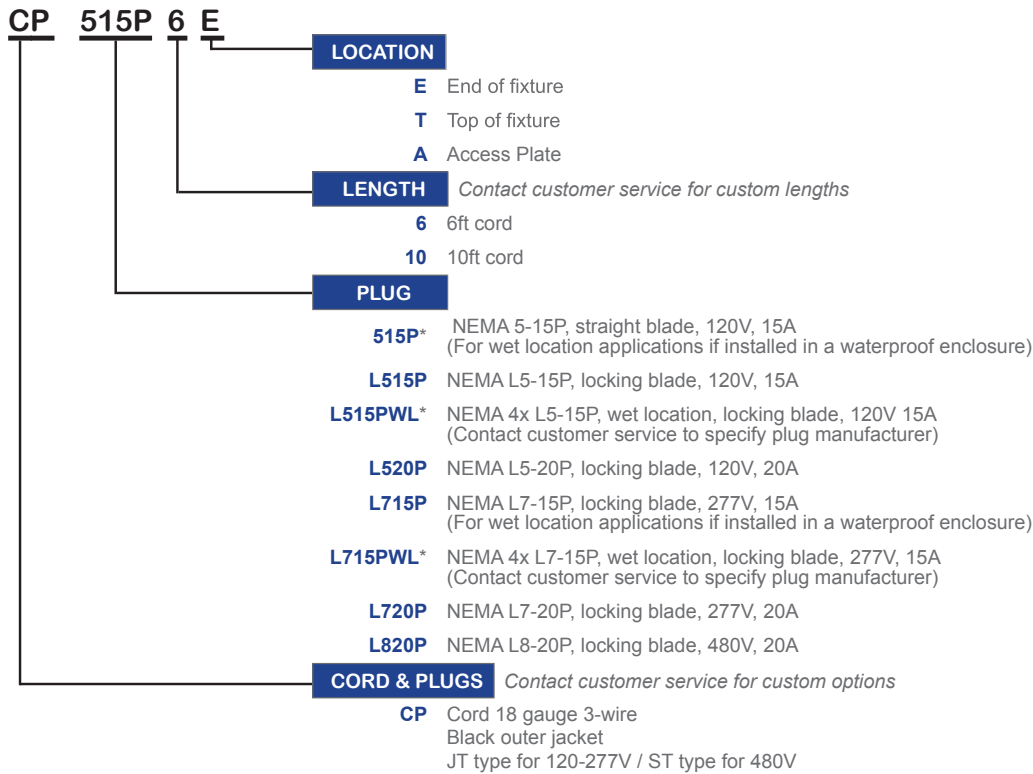
ELECTRICAL

PLUG-IN BRANCH WIRING CONNECTOR SYSTEM

- For wiring through fixture channel in single or multiple circuits
- Low-voltage for dimming available
- 12 gauge wire
- Quick connect plugs for easy installation
- Contact customer service for additional options



CORD & PLUG



*Consult local building codes for specific wet location installation requirements



Los Angeles Lighting Mfg. Co.
 Contact Us
 T: 626-454-8300 10141 Olney Street
 F: 626-454-8399 El Monte, CA 91731
 www.lalighting.com Made in the USA



Due to continued product improvements and enhancements, Los Angeles Lighting Manufacturing Company reserves the right to alter specifications, dimensions, data, and/or materials without notice. Please visit our website to view the most current information.

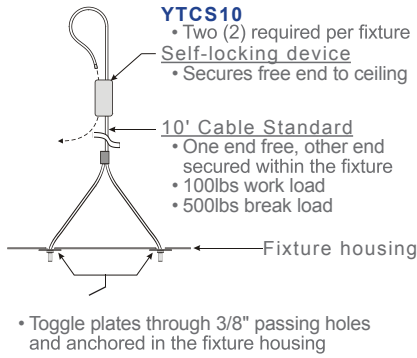
© 2022 LOS ANGELES LIGHTING MANUFACTURING CO. ALL RIGHTS RESERVED.

Revised: 01/05/2023

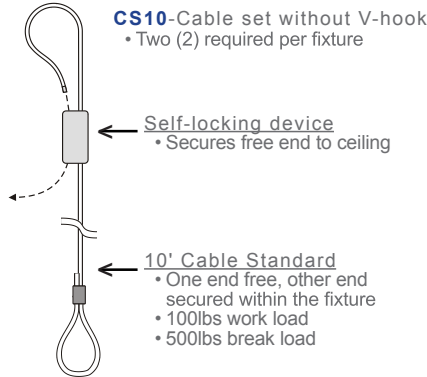


MOUNTING ACCESSORIES

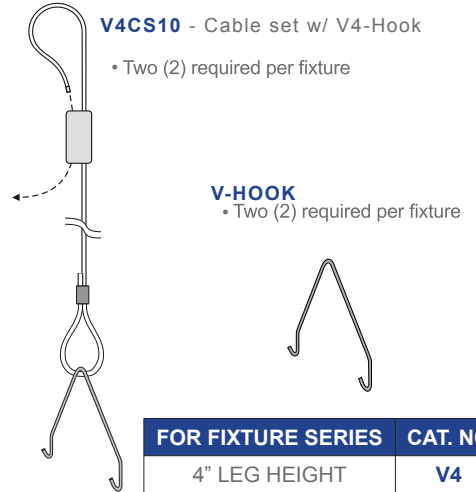
Y-TOGGLE-END / CABLE SUSPENSION SYSTEM



CABLE SUSPENSION SYSTEM



V-HOOK / CABLE SUSPENSION SYSTEM



ACCESSORIES

WG14-STR100

- 14 gauge Wire Guard
- Chrome epoxy powder coated finish
- Not for use with reflectors



Los Angeles Lighting Mfg. Co.
 Contact Us
 T: 626-454-8300
 F: 626-454-8399
 www.lalighting.com

10141 Olney Street
 El Monte, CA 91731
 Made in the USA



Due to continued product improvements and enhancements, Los Angeles Lighting Manufacturing Company reserves the right to alter specifications, dimensions, data, and/or materials without notice. Please visit our website to view the most current information.

© 2022 LOS ANGELES LIGHTING MANUFACTURING CO. ALL RIGHTS RESERVED.

Revised: 01/05/2023

