



# BAYLIGHTER®

## EBY150 SERIES

### High Bay Luminaire



- High Bay Luminaire
- Quarter Turn Rotary Locking Sockets
- Frame & Lens Assembly With Safety Cables
- One Way Polyurethane Gasketed
- Removable Wiring Access Plate
- Stem, Cable or Chain Mountable
- Suitable for Damp Locations
- Available with:
  - Fluorescent, LED and LED T8 (Internally Driven)
  - .040 Aluminum Fixture Housing
  - 95% Enhanced Specular Aluminum Reflectors
  - Variety of Lenses
  - Emergency Battery Pack
  - Sensor
  - 11ga. Wire Guard
  - Die Cast Hub For 3/4" Pipe (4' Fixture Only)

Photometric Data and IES Files are Available on [www.lalighting.com](http://www.lalighting.com)

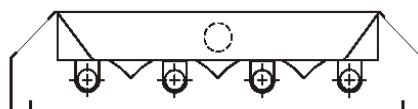
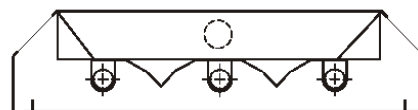
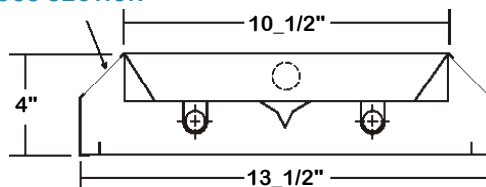


**LOS ANGELES LIGHTING MFG. CO.**  
 10141 OLNEY ST. / EL MONTE, CA 91731  
**TEL : 626-454-8300 FAX : 626-454-8399**  
[www.lalighting.com](http://www.lalighting.com)



## EBY150 SERIES

### CROSS SECTION

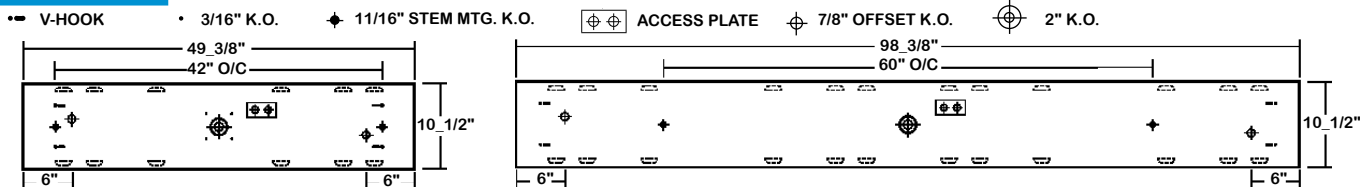


● ALUMINUM REFLECTOR SECURED WITH QUARTER TURN FASTENERS FOR EASE OF MAINTENANCE.

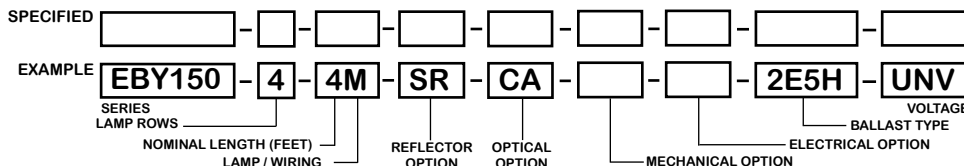
### CATALOG NUMBER

|              | NOMINAL LENGTH | TOTAL LAMPS |              | NOMINAL LENGTH | TOTAL LAMPS |
|--------------|----------------|-------------|--------------|----------------|-------------|
| EBY150-2-4M  | 4'             | 2           | EBY150-2-4R  | 4'             | 2           |
| EBY150-3-4M  | 4'             | 3           | EBY150-3-4R  | 4'             | 3           |
| EBY150-4-4M  | 4'             | 4           | EBY150-4-4R  | 4'             | 4           |
| EBY150-2-8MT | 8'             | 4           | EBY150-2-8RT | 8'             | 4           |
| EBY150-3-8MT | 8'             | 6           | EBY150-3-8RT | 8'             | 6           |
| EBY150-4-8MT | 8'             | 8           | EBY150-4-8RT | 8'             | 8           |

### BACK PLATE



### ORDERING GUIDE



**NOTE: LAMP/WIRING\***  
 M = Miniature Bi-Pin T5  
 R = Medium Bi-Pin T8  
 MT = Miniature Bi-Pin T5, Tandem Wiring  
 RT = Medium Bi-Pin T8, Tandem Wiring

### OPTIONS AND ACCESSORIES

|   |   |   |   |  |  |
|---|---|---|---|--|--|
| <ul style="list-style-type: none"> <li>● REFLECTOR OPTIONS</li> <li>Specular Aluminum Reflector (95%)</li> <li>White Reflector</li> </ul>   | <p>SUFFIX</p> <p>SR</p> <p>WR</p>                   | <ul style="list-style-type: none"> <li>● MECHANICAL OPTIONS</li> <li>Gasketing</li> </ul>   | <p>SUFFIX</p> <p>GSK*</p>                     | <ul style="list-style-type: none"> <li>● BALLAST OPTIONS*</li> <li>Electronic T5</li> <li>Electronic T5HO</li> <li>Electronic T8 Instant Start</li> <li>Electronic T8 Rapid Start</li> <li>Electronic T8HO</li> <li>x = Number of Lamps per Ballast</li> </ul> | <p>SUFFIX</p> <p>xE5</p> <p>xE5H</p> <p>xE8I</p> <p>xE8R</p> <p>xE8H</p> |
| <ul style="list-style-type: none"> <li>● OPTICAL OPTIONS</li> <li>Clear Acrylic</li> <li>Clear Prismatic Acrylic</li> <li>Polycarbonate Lenses</li> <li>High Impact Acrylic</li> <li>Note: Other Lens Available Upon Request</li> </ul> | <p>SUFFIX</p> <p>CA</p> <p>PA</p> <p>*</p> <p>*</p> | <ul style="list-style-type: none"> <li>● ELECTRICAL OPTIONS</li> <li>Emergency Battery Pack</li> <li>External Line Fusing (HLR/GLR)</li> <li>Motion Sensor</li> </ul> | <p>SUFFIX</p> <p>BP*</p> <p>ELF</p> <p>MS</p> | <ul style="list-style-type: none"> <li>● ACCESSORIES</li> <li>Wire Guard - 11 Ga.</li> <li>Fixture Suspension System</li> <li>Ceiling Spacer</li> <li>6" Leg Height V-Hook</li> <li>Die Cast Hub For 3/4" Pipe (4' Fixture Only)</li> </ul>                    | <p>CAT.NO.</p> <p>WG11-EBY150</p> <p>*</p> <p>*</p> <p>V6</p> <p>HUB</p> |

\*Refer to [www.lalighting.com/resources](http://www.lalighting.com/resources) for more information

### SPECIFICATIONS

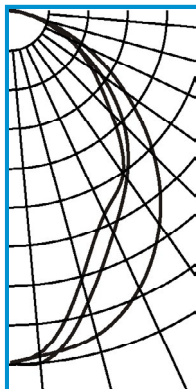
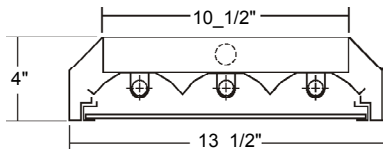
|  |  |
|--|--|
| <ul style="list-style-type: none"> <li>● TYPE</li> <li>● CONSTRUCTION</li> </ul>   | <p>High bay luminaire for surface, pendant, or chain mounting. Must be spaced a minimum of 1 1/2" from ceiling when surface mounted. 22 gauge cold rolled steel housing with louvered vents on top for heat removal. Quarter turn rotary locking lamp-holders standard. (20 ga. C.R.S. and .040 aluminum housing available as specified)</p>   |
| <ul style="list-style-type: none"> <li>● FINISH</li> <li>● REFLECTOR</li> <li>● DOOR FRAME</li> <li>● GASKET</li> <li>● OPTICS</li> <li>● WIRE GUARDS</li> <li>● WIRING</li> </ul> | <p>Baked white polyester finish , minimum reflectance 86%. (Powder coated finish available.)<br/>                 Specular aluminum reflector standard, 95% reflectance. (White reflector available)<br/>                 20 ga. cold rolled steel door frame. T-hinges and positive spring loaded latches. Safety cables attached.<br/>                 One way polyurethane gasketed standard. More options available.<br/>                 Clear acrylic lens standard. Extensive variety of lenses, diffusers and louvers available.<br/>                 11 ga. powder coated.<br/>                 120v 60Hz., 277v 60Hz., UNV (universal voltage 120v thru 277v.) or as otherwise specified.<br/>                 Multiple levels of switching available as specified.<br/>                 U.L. Listed. Suitable for damp locations.</p> |
| <ul style="list-style-type: none"> <li>● LABELS</li> </ul>   |  |



**PHOTOMETRIC DATA**

**EBY150-3-4M-SR-CA-E5H**

TEST NO.=LA-T1367  
 LAMP TYPE=F54T5HO  
 NO. OF LAMP=3  
 LUMENS PER LAMP=5000  
 WATTS PER LAMP=54  
 BALLAST FACTOR=1  
 PHOTOMETRY TYPE=C



**CANDLEPOWER**

| ANGLE | END  | 45   | CROSS |
|-------|------|------|-------|
| 0     | 5746 | 5746 | 5746  |
| 5     | 5665 | 5778 | 5613  |
| 15    | 5485 | 7919 | 4517  |
| 25    | 4993 | 3989 | 3644  |
| 35    | 4239 | 3312 | 3210  |
| 45    | 3302 | 2617 | 2310  |
| 55    | 2267 | 1794 | 1609  |
| 65    | 1331 | 1024 | 1040  |
| 75    | 517  | 442  | 435   |
| 85    | 78   | 60   | 46    |
| 90    | 0    | 2    | 1     |
| 95    | 0    | 0    | 0     |
| 105   | 0    | 0    | 0     |
| 115   | 0    | 0    | 0     |
| 125   | 0    | 0    | 0     |
| 135   | 0    | 0    | 0     |
| 145   | 0    | 0    | 0     |
| 155   | 0    | 0    | 0     |
| 165   | 0    | 0    | 0     |
| 175   | 0    | 0    | 0     |
| 180   | 0    | 0    | 0     |

**ZONAL LUMEN SUMMARY**

| DEGREES | LUMENS | % LAMP | % FIXTURE |
|---------|--------|--------|-----------|
| 0-30    | 3874   | 25.8   | 33.7      |
| 0-40    | 6084   | 40.6   | 52.9      |
| 0-60    | 9858   | 65.7   | 85.8      |
| 0-90    | 11490  | 76.6   | 100.0     |
| 90-120  | 0      | 0.0    | 0         |
| 90-150  | 0      | 0.0    | 0         |
| 90-180  | 0      | 0.0    | 0         |
| 0-180   | 11491  | 76.6   | 100.0     |

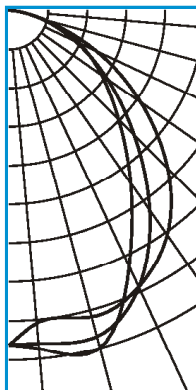
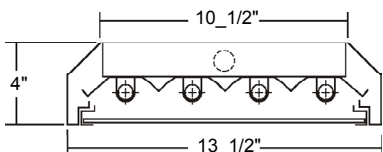
Lumen Output = 11491 lumens  
 Luminaire Efficiency = 76.6%

**SPACING CRITERION**

| ALONG | ACROSS |
|-------|--------|
| 1.19  | 0.88   |

**EBY150-4-4M-SR-CA-E5H**

TEST NO.=LA-T0938  
 LAMP TYPE=F54T5HO  
 NO. OF LAMP=4  
 LUMENS PER LAMP=5000  
 WATTS PER LAMP=54  
 BALLAST FACTOR=1  
 PHOTOMETRY TYPE=C



**CANDLEPOWER**

| ANGLE | END  | 45   | CROSS |
|-------|------|------|-------|
| 0     | 6427 | 6427 | 6427  |
| 5     | 6031 | 6423 | 6521  |
| 15    | 6101 | 6490 | 6715  |
| 25    | 5873 | 5879 | 5436  |
| 35    | 5279 | 4694 | 4059  |
| 45    | 4295 | 3385 | 2964  |
| 55    | 3077 | 2299 | 2165  |
| 65    | 1849 | 1403 | 1471  |
| 75    | 692  | 651  | 711   |
| 85    | 123  | 102  | 87    |
| 90    | 2    | 3    | 3     |
| 95    | 0    | 0    | 0     |
| 105   | 0    | 0    | 0     |
| 115   | 0    | 0    | 0     |
| 125   | 0    | 0    | 0     |
| 135   | 0    | 0    | 0     |
| 145   | 0    | 0    | 0     |
| 155   | 0    | 0    | 0     |
| 165   | 0    | 0    | 0     |
| 175   | 0    | 0    | 0     |
| 180   | 0    | 0    | 0     |

**ZONAL LUMEN SUMMARY**

| DEGREES | LUMENS | % LAMP | % FIXTURE |
|---------|--------|--------|-----------|
| 0-30    | 5104   | 25.5   | 33.4      |
| 0-40    | 8045   | 40.2   | 52.6      |
| 0-60    | 12968  | 64.8   | 84.8      |
| 0-90    | 15289  | 76.4   | 100.0     |
| 90-120  | 1      | 0.0    | 0         |
| 90-150  | 1      | 0.0    | 0         |
| 90-180  | 1      | 0.0    | 0         |
| 0-180   | 15290  | 76.4   | 100.0     |

Lumen Output = 15290 lumens  
 Luminaire Efficiency = 76.4%

**SPACING CRITERION**

| ALONG | ACROSS |
|-------|--------|
| 1.29  | 1.12   |

This space is intentionally left blank.

This space is intentionally left blank.

