



# BAYLIGHTER EBY150

ENCLOSED HIGH BAY LUMINAIRE

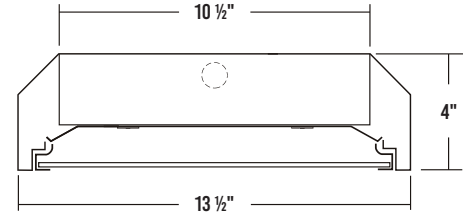


JOB	
TYPE	
DATE	

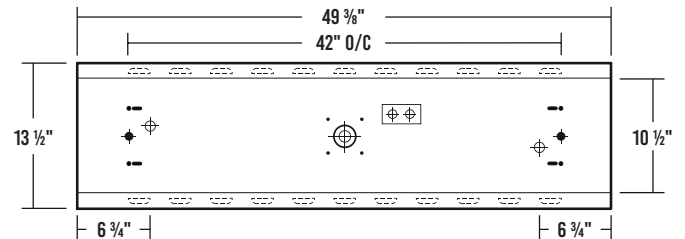
Commercial / Industrial / Warehouse



CROSS SECTION



BACKPLATE



- |              |                    |
|--------------|--------------------|
| Access Plate | 7/8" Offset KO     |
| V-Hook Hole  | 3/8" KO            |
| 2" KO        | 11/16" Mounting KO |

## SPECIFICATIONS

### Construction

- 22 gauge cold-rolled steel welded housing with louvered vents for heat removal
- 20 gauge cold-rolled steel door frame secured by T-hinges and spring-loaded latches
- One-way polyurethane gasket

### Finish

- Pre-painted housing
- Baked white polyester finish
- Minimum reflectance 86%

### Optical

- Clear prismatic acrylic lens

### Electrical

- High-efficiency drivers coupled with long-life LEDs
- Service life tested at 148,000 hours (L70)
- Universal voltage 120V through 277V (347V / 480V available)
- Power Factor (PF)  $\geq 0.9$
- Total Harmonic Distortion (THD)  $\leq 20\%$

### Listing

- UL USA and Canada listed / suitable for damp locations

### Warranty

- 5-Year limited warranty standard. 10-Year limited warranty also available

## APPLICATIONS

- Commercial, Industrial, Warehouse

## FEATURES

- High (HT) Ambient temperature version available for extreme temperature ranges
- 0-10V dimming driver standard
- Supports California Title 24 compliance
- Safety cables attached to door frame and LED gear tray

## OPTIONS

- Range of lumen packages and color temperatures
- Sensors and controls
- Lens options
- 11 gauge wire guard available
- Emergency battery pack
- Cable suspension systems
- Pendant mount adapter
- Customization available upon request



Los Angeles Lighting Mfg. Co.  
Contact Us  
T: 626-454-8300 10141 Olney Street  
F: 626-454-8399 El Monte, CA 91731  
www.lalighting.com Made in the USA



Due to continued product improvements and enhancements, Los Angeles Lighting Manufacturing Company reserves the right to alter specifications, dimensions, data, and/or materials without notice. Please visit our website to view the most current information.

© 2025 LOS ANGELES LIGHTING MANUFACTURING CO. ALL RIGHTS RESERVED

Revised: 04/18/25



## ORDERING INFORMATION

Visit [www.lalighting.com/resources](http://www.lalighting.com/resources) for additional options.

**EXAMPLE: EBY150-16-4L-PA2-BPL1.5-DRDM-UNV-2/850HT**

SERIES	NOMINAL LED LUMENS	NOMINAL LENGTH	OPTICAL	MECHANICAL	ELECTRICAL	DRIVER	VOLTAGE	# OF LED ROWS	CRI / CCT	AMBIENT TEMP.
<b>EBY150</b>		<b>4L</b>						<b>2</b>		
<b>EBY150</b> • Enclosed High Bay LED Luminaire	8 - 8000 lm 12 - 12000 lm 16 - 16000 lm 24 - 24000 lm (HT only) 30 - 30000 lm (HT only) 32 - 32000 lm (HT only)  <b>High Efficacy</b> 8HE - 8000 lm 12HE - 12000 lm	<b>4L</b> • 4'	<b>PA</b> • Clear Prismatic Acrylic  <b>PA2</b> • Clear Prismatic Acrylic 0.125"  <b>FPA2</b> • Frosted Prismatic Acrylic 0.125"  <b>XX</b> • No Door & Lens Assembly	<b>GSKNx</b> • Neoprene Gasket  <b>PAF</b> • Painted After Fabrication  <b>RN</b> • Rivet Nut (required for SMA mounting adapter - see accessories section)  *Leave blank if not specified	<b>BPL1.5</b> • 1500 lm emergency battery pack  <b>MS(xx)</b> • Motion Sensor  *Leave blank if not specified	<b>DRDM</b> • 0-10V Dimming Driver  <b>DRDM2C</b> • 2-Channel 0-10V Dimming Driver (for Color Tunable White)  <b>DRSD<sup>1</sup></b> • Step Dimming Driver  <b>DR2W<sup>1</sup></b> • 120V 2-Wire Phase Dimming Driver (Must Specify 120V in Voltage Column)	<b>UNV</b> • 120V-277V	<b>2</b> • Two LED Rows	<b>827</b> • 80+CRI / 2700K  <b>830</b> • 80+CRI / 3000K  <b>835</b> • 80+CRI / 3500K  <b>840</b> • 80+CRI / 4000K  <b>850</b> • 80+CRI / 5000K  <b>865</b> • 80+CRI / 6500K  <b>8TW<sup>2</sup></b> • 80+CRI Tunable White 2700K-6500K Requires DRDM2C driver  <b>90CRI Also available</b>  Contact customer service for additional CRI/CCT packages.	<b>HT<sup>3</sup></b> • High Ambient Temp.  *HT cannot be combined with HE systems

Most common options for EBY150 shown above. For additional options, including lumen packages, controls, lenses, colors/finishes, cord & plug, switches, and more, visit [www.lalighting.com/resources](http://www.lalighting.com/resources) or contact customer service.

- <sup>1</sup> DRSD and DR2W not available for HT systems  
<sup>2</sup> Tunable white not available for HT systems.  
<sup>3</sup> HT cannot be combined with High Efficacy (HE) systems.

## ACCESSORIES

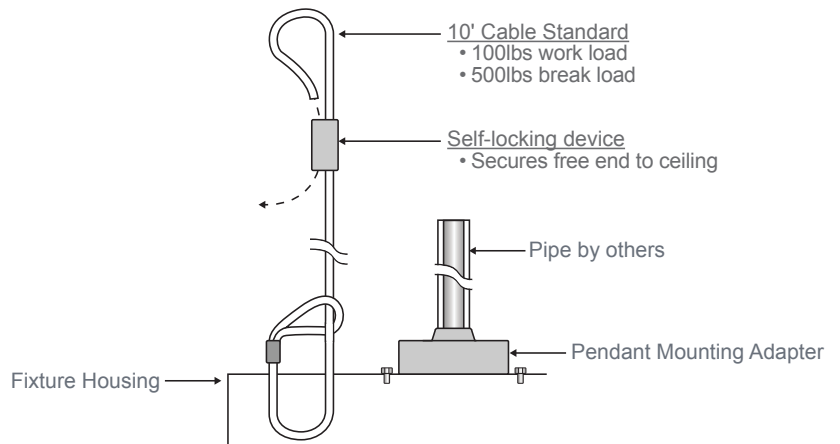
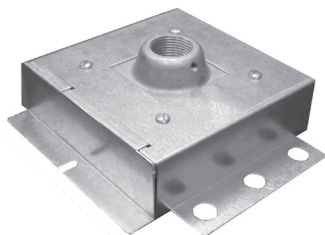
### Wire Guard

#### WG11-EBY150-4

- Shipped separately from luminaire, must be installed on-site
- Chrome epoxy powder coat standard. Custom colors also available (contact Customer Service).
- All necessary hardware included (zinc finish)

### SMA - Pendant Mounting Adapter with Safety Cable

- Designed for single point pendant mount applications
- 20 gauge galvanized steel mounting adapter for 3/4" pipe
- Adapter box serves as enclosure for electrical connection to luminaire
- Includes safety cable to be attached to building structure
- Must specify RN (Rivet Nut) option in luminaire part number.
- Example: **EBY150-24-4L-RN-DRDM-UNV-2/850HT**



**Los Angeles Lighting Mfg. Co.**  
 Contact Us  
 T: 626-454-8300  
 F: 626-454-8399  
[www.lalighting.com](http://www.lalighting.com)  
 10141 Olney Street  
 El Monte, CA 91731  
 Made in the USA



Due to continued product improvements and enhancements, Los Angeles Lighting Manufacturing Company reserves the right to alter specifications, dimensions, data, and/or materials without notice.  
 Please visit our website to view the most current information.

© 2025 LOS ANGELES LIGHTING MANUFACTURING CO. ALL RIGHTS RESERVED

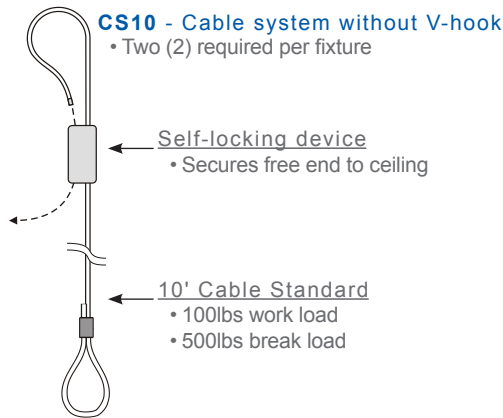
Revised: 04/18/25



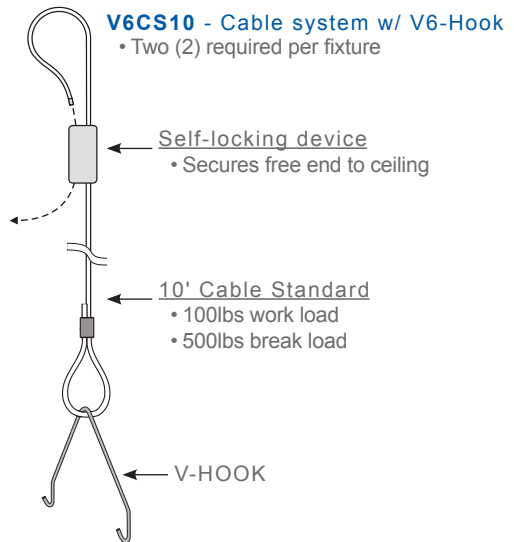
## MOUNTING HARDWARE

Mounting accessories are ordered separately from luminaire

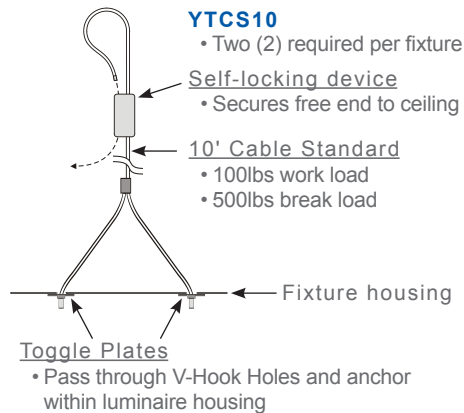
### CABLE SUSPENSION SYSTEM



### V-HOOK / CABLE SUSPENSION SYSTEMS

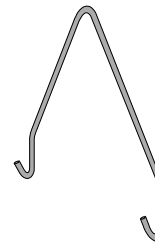


### Y-TOGGLE-END / CABLE SUSPENSION SYSTEM



### V-HOOK

- V6 - 6" Leg Height**
- Hooks attach to V-Hook Holes on luminaire or chain mount coupling tabs
  - Two (2) required per luminaire



**Los Angeles Lighting Mfg. Co.**  
 Contact Us  
 T: 626-454-8300 10141 Olney Street  
 F: 626-454-8399 El Monte, CA 91731  
 www.lalighting.com Made in the USA



Due to continued product improvements and enhancements, Los Angeles Lighting Manufacturing Company reserves the right to alter specifications, dimensions, data, and/or materials without notice.  
 Please visit our website to view the most current information.

© 2025 LOS ANGELES LIGHTING MANUFACTURING CO. ALL RIGHTS RESERVED

Revised: 04/18/25



SYSTEM DATA: Additional Lumen Packages Available. Contact Customer Service for More Information

Normal  
Temp

4'	LED LUMEN PACKAGE	NORMAL AMBIENT TEMPERATURE PRODUCT CODE	DELIVERED LUMENS	SYSTEM WATTS	LUMINAIRE EFFICACY	AMBIENT TEMP.	FLUORESCENT EQUIVALENT	IES FILES
	8000 Lumens (Nominal)	EBY150-8-4L-PA-DRDM-UNV-1/850	6799	52.7	129.1 lm/W	-20°C / 35°C (-4°F / 95°F)	2x F54T5HO 4x F32T8	*
	12000 Lumens (Nominal)	EBY150-12-4L-PA-DRDM-UNV-2/850	10280	81.9	125.5 lm/W	-20°C / 35°C (-4°F / 95°F)	3x F54T5HO 6x F32T8	*
	16000 Lumens (Nominal)	EBY150-16-4L-PA-DRDM-UNV-2/850	13317	99.2	134.2 lm/W	-20°C / 35°C (-4°F / 95°F)	4x F54T5HO	*

Normal Temp  
High Efficacy

4'	LED LUMEN PACKAGE	NORMAL AMBIENT TEMPERATURE (HIGH EFFICACY) PRODUCT CODE	DELIVERED LUMENS	SYSTEM WATTS	LUMINAIRE EFFICACY	AMBIENT TEMP.	FLUORESCENT EQUIVALENT	IES FILES
	8000 Lumens (Nominal)	EBY150-8HE-4L-PA-DRDM-UNV-1/850	6573	45.3	145.1 lm/W	-20°C / 35°C (-4°F / 95°F)	2x F54T5HO 4x F32T8	*
	12000 Lumens (Nominal)	EBY150-12HE-4L-PA-DRDM-UNV-2/850	9929	71.1	139.6 lm/W	-20°C / 35°C (-4°F / 95°F)	3x F54T5HO 6x F32T8	*

High Ambient  
Temp

4'	LED LUMEN PACKAGE	NORMAL AMBIENT TEMPERATURE (HIGH EFFICACY) PRODUCT CODE	DELIVERED LUMENS	SYSTEM WATTS	LUMINAIRE EFFICACY	AMBIENT TEMP.	FLUORESCENT EQUIVALENT	IES FILES
	8000 Lumens (Nominal)	EBY150-8-4L-PA-DRDM-UNV-1/850HT	6575	44.1	149.1 lm/W	-20°C / 35°C (-4°F / 95°F)	2x F54T5HO 4x F32T8	*
	12000 Lumens (Nominal)	EBY150-12-4L-PA-DRDM-UNV-2/850HT	10051	68.8	146.2 lm/W	-20°C / 35°C (-4°F / 95°F)	3x F54T5HO 6x F32T8	*
	16000 Lumens (Nominal)	EBY150-16-4L-PA-DRDM-UNV-2/850HT	13409	95.1	141.1 lm/W	-20°C / 35°C (-4°F / 95°F)	4x F54T5HO	<a href="#">LA-T3132</a>
	24000 Lumens (Nominal)	EBY150-24-4L-PA-DRDM-UNV-2/850HT	19250	149.7	128.6 lm/W	-20°C / 35°C (-4°F / 95°F)	6x F54T5HO	<a href="#">LA-T3128</a>
	30000 Lumens (Nominal)	EBY150-30-4L-FPA2-DRDM-UNV-2/850HT	24373	184.0	132.4 lm/W	-20°C / 35°C (-4°F / 95°F)	8x F54T5HO	*
	32000 Lumens (Nominal)	EBY150-32-4L-PA-DRDM-UNV-2/850HT	26631	197.3	135.0 lm/W	-20°C / 35°C (-4°F / 95°F)	8x F54T5HO	*

**NOTE:**

System data as of 4/16/25.

Subject to change without notice.

System data is based on 120V input voltage. Actual performance may differ as a result of end-user environment and application. This fixture has been tested and listed in accordance with UL Standards.

L.A. Lighting certifies that it will operate safely when installed properly, and within an ambient temperature range noted in the system data table.

Additional lumen packages and color temperatures available.



**Los Angeles Lighting Mfg. Co.**

Contact Us  
T: 626-454-8300 10141 Olney Street  
F: 626-454-8399 El Monte, CA 91731  
www.lalighting.com Made in the USA



Due to continued product improvements and enhancements, Los Angeles Lighting Manufacturing Company reserves the right to alter specifications, dimensions, data, and/or materials without notice.  
Please visit our website to view the most current information.

© 2025 LOS ANGELES LIGHTING MANUFACTURING CO. ALL RIGHTS RESERVED

Revised: 04/18/25

