



SECURITY LED

WSE500 (2FT) SERIES (4' AVAILABLE)

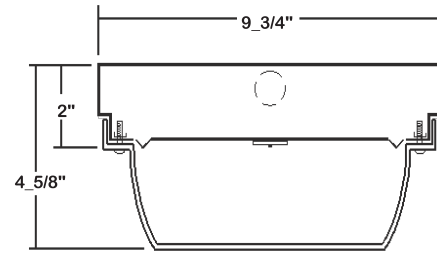
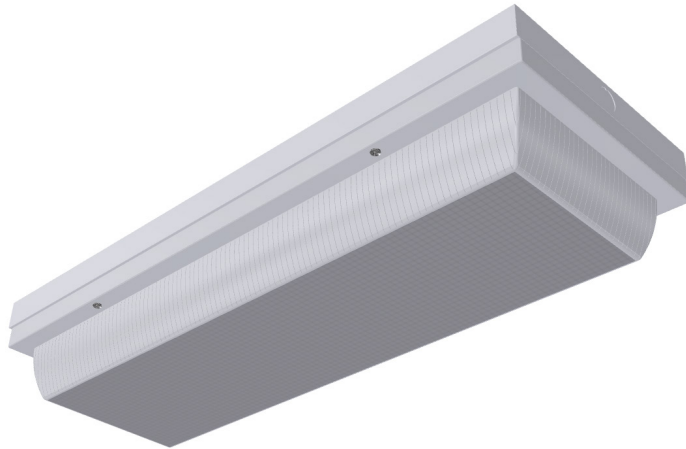
HIGH IMPACT WRAPAROUND SECURITY LUMINAIRE

DATE	
JOB	

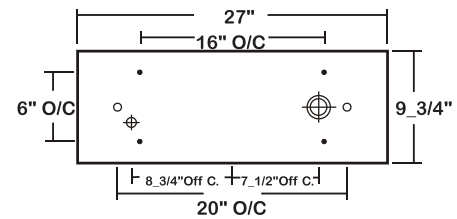
WWW.LALIGHTING.COM
626-454-8300

SURFACE / CEILING MOUNTED SECURITY LED LUMINAIRE

DIMENSIONS



• 3/8" MTG. K.O. ○ 11/16" STEM MTG. K.O. ⌀ 7/8" K.O. ⊕ 2" K.O.



APPLICATIONS

- Security, Vandal Resistant Areas, Commercial

FEATURES

- 0-10V dimming driver standard
- Supports California Title 24 compliance

OPTIONS

- Full customization available upon request
- Additional lumen packages and color temperatures available
- Controls and sensors available
- Wireless control options available
- Emergency battery pack available

SPECIFICATIONS

CONSTRUCTION

- 20 ga. cold rolled steel welded housing
- Spot welded seams and corners
- Lens secured by 4 stainless steel captive tamper resistant screws
- One-way cross-linked polyethylene gasket standard

FINISH

- Baked white powder coated finish / welded and painted after fabrication / minimum reflectance 90%

OPTICAL

- Clear prismatic polycarbonate lens (nominal 0.187) standard

ELECTRICAL

- High efficiency drivers coupled with long-life LEDs
- Service life greater than 50,000 hours (L70)
- Universal voltage 120V through 277V (347V / 480V available)
- Power Factor (PF) ≥ 0.9
- Total Harmonic Distortion (THD) ≤ 20%

LISTING

- UL USA and Canada listed / suitable for damp locations

WARRANTY

- 5-Year limited warranty standard. 10-Year limited warranty also available



Los Angeles Lighting Mfg. Co.
Contact Us
T: 626-454-8300 10141 Olney Street
F: 626-454-8399 El Monte, CA 91731
www.lalighting.com Made in the USA



Due to continued product improvements and enhancements, Los Angeles Lighting Manufacturing Company reserves the right to alter specifications, dimensions, data, and/or materials without notice. Please visit our website to view the most current information.

© 2022 LOS ANGELES LIGHTING MANUFACTURING CO. ALL RIGHTS RESERVED.

Revised: 07/18/23



ORDERING INFORMATION

EXAMPLE: WSE500-3-2L-BPL1.5-DRDM-UNV-1/840

SERIES	LED LUMEN PACKAGE	EFFICACY	NOMINAL LENGTH	ELECTRICAL	DRIVER	VOLTAGE	# OF LED ROW	CRI / CCT
WSE500			2L		DRDM	UNV		
WSE500 High Impact Wraparound Security LED Luminaire	2 Nom. 2000 Lumens 3 Nom. 3000 Lumens 4 Nom. 4000 Lumens 6 Nom. 6000 Lumens *Additional Lumen Packages Available	(Blank) Standard HE High Efficacy (Only 2000 / 3000 / 6000 lumens System)	2L 2'	BPL1.5 1500lm Emergency Battery Pack MSHxx Motion Sensor WLC(LED RU) EnOcean Wireless Control <i>*Leave Blank if Not Specified</i> <i>Additional Electrical Options</i>	DRDM 0-10V Dimming Driver	UNV 120V-277V	1 One LED Row (Only 2000 / 3000 / 4000 lumens Systems) 2 Two LED Rows (Only 6000 lumens System)	830 80+CRI / 3000K Color Temp. 835 80+CRI / 3500K Color Temp. 840 80+CRI / 4000K Color Temp. 850 80+CRI / 5000K Color Temp. <i>*Additional Color Temp. Available</i>
Standard options for WSE500 shown above. For additional options, including lumen packages, controls, lenses, switches, finishes, and more, visit www.lalighting.com/resources or contact customer service.								

SYSTEM DATA

THESE ARE THE MOST POPULAR LUMEN PACKAGES. PLEASE CONSULT FACTORY FOR ADDITIONAL SYSTEM DATA.

LED LUMEN PACKAGE	NORMAL AMBIENT TEMPERATURE PRODUCT CODE	DELIVERED LUMENS	SYSTEM WATTS	LUMINAIRE EFFICACY	AMBIENT TEMP.	FLUORESCENT / HID / CFL EQUIVALENT	IES FILES
2000 Lumens (Nominal)	WSE500-2-2L-DRDM-UNV-1/840	2001 lm	16.7 W	120.1 lm/W	-20°C / 35°C	1-F32T8	*
3000 Lumens (Nominal)	WSE500-3-2L-DRDM-UNV-1/840	2860 lm	26.0 W	110.0 lm/W	-20°C / 35°C	2-F32T8, 1-F54T5HO	LA-T3189
4000 Lumens (Nominal)	WSE500-4-2L-DRDM-UNV-1/840	3862 lm	26.9 W	143.6 lm/W	-20°C / 35°C	3-F32T8	*
6000 Lumens (Nominal)	WSE500-6-2L-DRDM-UNV-2/840	5720 lm	52.3 W	109.3 lm/W	-20°C / 35°C	4-F32T8, 2-F54T5HO	*

LED LUMEN PACKAGE	NORMAL AMBIENT TEMPERATURE (HIGH EFFICACY) PRODUCT CODE	DELIVERED LUMENS	SYSTEM WATTS	LUMINAIRE EFFICACY	AMBIENT TEMP.	FLUORESCENT / HID / CFL EQUIVALENT	IES FILES
2000 Lumens (Nominal)	WSE500-2HE-2L-DRDM-UNV-1/840	1978 lm	13.0 W	152.6 lm/W	-20°C / 35°C	1-F32T8	*
3000 Lumens (Nominal)	WSE500-3HE-2L-DRDM-UNV-1/840	2934 lm	19.8 W	148.1 lm/W	-20°C / 35°C	2-F32T8, 1-F54T5HO	*
6000 Lumens (Nominal)	WSE500-6HE-2L-DRDM-UNV-2/840	5868 lm	39.6 W	148.1 lm/W	-20°C / 35°C	3-F32T8	*

NOTE:

System data is based on 120V input voltage. Actual performance may differ as a result of end-user environment and application.

This fixture has been tested and listed in accordance with UL Standards. L.A. Lighting certifies that it will operate safely when installed properly, and within an ambient temperature range noted in the system data table.

Additional lumen packages and color temperatures available.



Los Angeles Lighting Mfg. Co.
 Contact Us
 T: 626-454-8300 10141 Olney Street
 F: 626-454-8399 El Monte, CA 91731
 www.lalighting.com Made in the USA



Due to continued product improvements and enhancements, Los Angeles Lighting Manufacturing Company reserves the right to alter specifications, dimensions, data, and/or materials without notice. Please visit our website to view the most current information.

© 2022 LOS ANGELES LIGHTING MANUFACTURING CO. ALL RIGHTS RESERVED.

Revised: 07/18/23

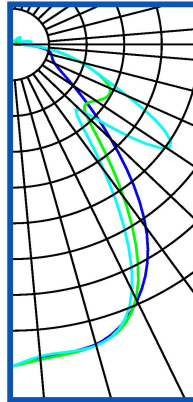
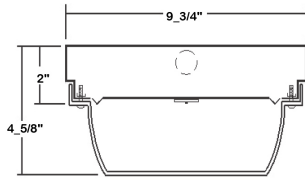


MADE IN THE USA
BAA Compliant

PHOTOMETRIC DATA · WSE500 SERIES

WSE500-3-2L-DRDM-UNV-1/840

TEST NO.=LA-T3189
 LED TYPE= 48 LED MODULE NO. OF MODULE=1
 SYSTEM WATT (W)=26.0
 CRI ≥ 80
 L70(Hrs.) ≥ 50,000
 PHOTOMETRY TYPE=C



CANDLEPOWER

ANGLE	END	45	CROSS
0	1199	1199	1199
5	1170	1178	1166
15	1157	1161	1161
25	1053	1045	1011
35	831	694	571
45	498	378	346
55	268	366	674
65	169	385	453
75	147	252	254
85	89	98	99
90	21	33	32
95	15	49	61
115	20	27	27
125	14	29	37
135	7	13	35
145	2	1	7
155	0	0	0
165	0	0	0
175	0	0	0
180	0	0	0

ZONAL LUMEN SUMMARY

DEGREES	LUMENS	% LAMP	% FIXTURE
0-30	922	30.1	32.2
0-40	1360	44.4	47.5
0-60	2046	66.8	71.5
0-90	2719	88.8	95.0
90-120	100.4	3.2	3.5
90-150	140.8	4.6	4.9
90-180	140.8	4.6	4.9
0-180	2860	93.4	100.00

Luminaire Output= **2860** lumens
 Luminaire Efficacy = **110.0** lm/W

SPACING CRITERION

ALONG	ACROSS
0.94	1.45

