



RESOURCES MECHANICAL OPTIONS

Please consult factory regarding any questions or inquires about mechanical options
Not all mechanical options are suitable for all fixtures.

GASKET

GSK N 1

LOCATION

- 1 - One-Way
- 2 - Two-Way
- 3 - Three-Way

MATERIAL TYPE

(Blank) - Polyurethane
N - Neoprene

GASKET

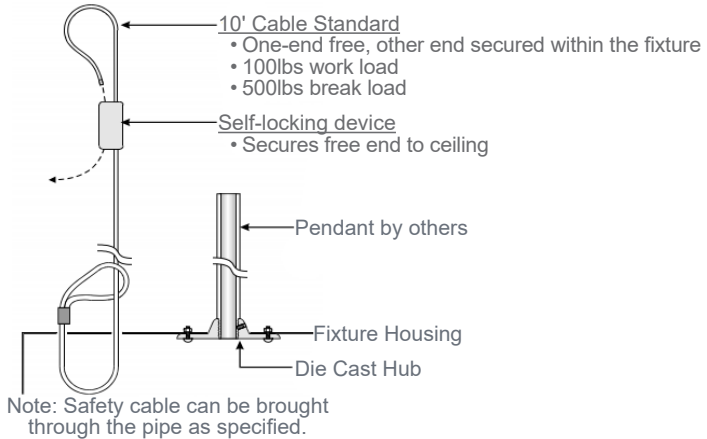
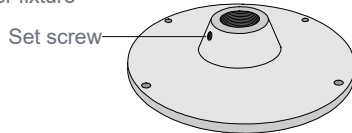
GSK - Gasket Seal

	1-Way	2-Way	3-Way
T-Bar			
Trim Flange			

ALUMINUM DIE CAST HUB WITH SAFETY CABLE SET

HUB

- Aluminum die cast hub with set screw for 3/4" pipe
- Safety cable included
- One (1) per fixture



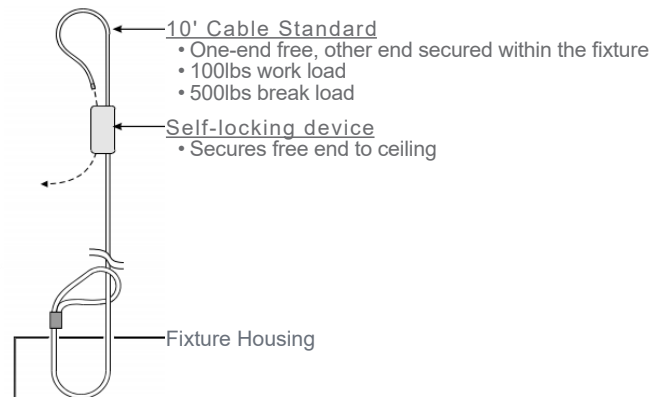
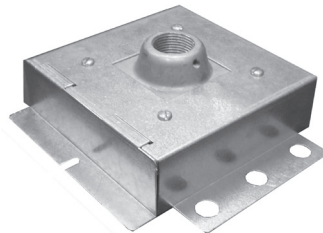
PENDANT MOUNTING ADAPTER WITH SAFETY CABLE SET

SMA

- 20 ga. die formed galvanized steel mounting adapter for 3/4" pipe
- Die cast aluminum hub 3/4" pipe pre-installed
- Designed for single point pendant mount applications
- Note: Must request pre-punched holes from factory*

Each unit consist of:

- One (1) mounting adapter assembly with lid
- Four (4) 3/8-16 mounting bolts
- One (1) sheet metal screw
- One (1) set screw
- 10ft safety cable, one end free and the other end secured within fixture
- Self-locking device, secures free end to ceiling member
- Factory inserted riv-nuts



Los Angeles Lighting Mfg. Co.
Headquarters Contact Info
10141 Olney Street T: 626-454-8300
El Monte, CA 91731 F: 626-454-8399
Made in the USA LALighting.com



BAA Compliant



Due to continued product improvements and enhancements, Los Angeles Lighting Manufacturing Company reserves the right to alter specifications, dimensions, data, and/or materials without notice. Please visit our website to view the most current information.

MADE IN THE U.S.A.



REVISED: 03/17/2021

WARNING

FIXTURE STABILIZER

STA

- 18 ga. die formed cold rolled steel stabilizer for 3/4" pipe
- Designed for single point pendant mount applications to keep fixture body at an even level
- Works in conjunction with HUB and SMA
- Baked white powder coated finish



Los Angeles Lighting Mfg. Co.
Headquarters
10141 Olney Street
El Monte, CA 91731
Made in the USA

Contact Info
T: 626-454-8300
F: 626-454-8399
LALighting.com



BAA Compliant



Due to continued product improvements and enhancements, Los Angeles Lighting Manufacturing Company reserves the right to alter specifications, dimensions, data, and/or materials without notice. Please visit our website to view the most current information.

MADE IN THE U.S.A.

REVISED: 03/17/2021



WARNING