



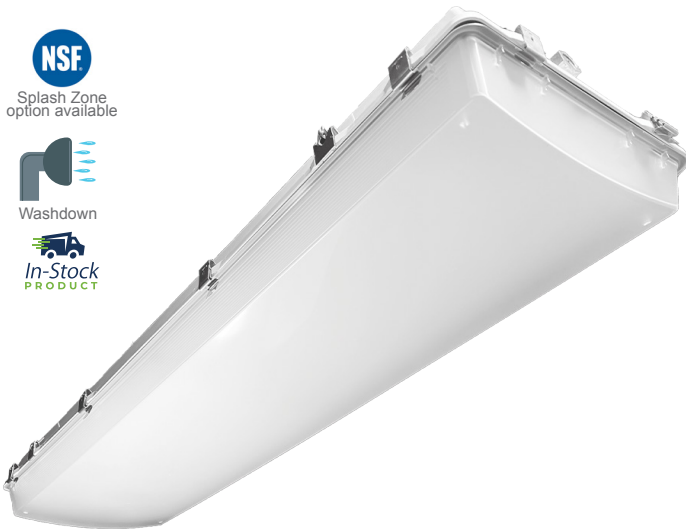
VAPOR TIGHT CIT400

® 14 1/2" WIDE FULLY GASKETED VAPOR TIGHT LUMINAIRE

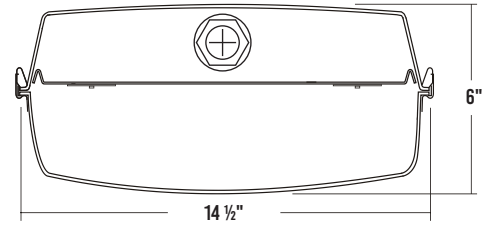
JOB	
TYPE	
DATE	

SURFACE/SUSPENSION MOUNTED LED LUMINAIRE

- NSF
Splash Zone option available
- Washdown
- In-Stock PRODUCT

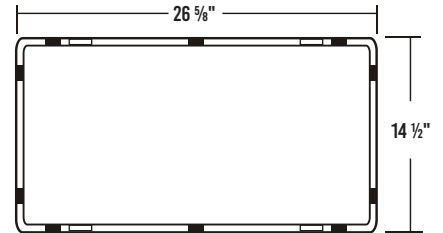


CROSS SECTION

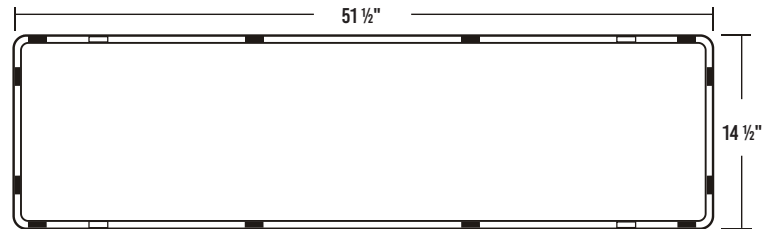


2' BACKPLATE

- Mounting Tab Locations
- Latch Locations



4' BACKPLATE



*Creating any hole in housing will invalidate wet location rating

SPECIFICATIONS

CONSTRUCTION

- IP65 / IP66 / IP67 / NEMA 4x rated enclosure
- Fiberglass housing with poured-in-place polyurethane gasket
- Stainless steel latches and mounting tabs
- 22 gauge cold-rolled steel internal snap-on gear tray/cover

FINISH

- Gear tray - baked white polyester finish / minimum reflectance 86%

OPTICAL

- Impact-resistant smooth acrylic frosted lens

ELECTRICAL

- High efficiency drivers coupled with long-life LEDs
- Service life tested at 50,000 hours (L70)
- Universal voltage 120V~277V (347V/480V available)
- Power Factor (PF) ≥ 0.9
- Total Harmonic Distortion (THD) ≤ 20%

LISTING

- UL USA and Canada listed
- Suitable for damp locations

WARRANTY

- 5-year limited warranty, 10-year limited warranty available

APPLICATIONS

- Commercial, Refrigeration, Dusty Areas, Freezer, Food Processing

FEATURES

- Rated for wet locations and washdown applications
- 0-10V Dimming driver standard
- Supports California Title 24 compliance

OPTIONS CONTACT CUSTOMER SERVICE FOR ADDITIONAL OPTIONS

- Range of lumen packages
- High ambient temperature (HT) modules
- Range of lenses
- Sensors and controls
- Second pre-installed watertight hub
- Stainless steel ceiling mount hangers
- Stainless steel tamper-proof screws
- NSF Splash Zone Certification
- Cord & plug
- Emergency battery pack
- Tunable white (2700K - 6500K)
- Customization available upon request



Los Angeles Lighting Mfg. Co.
 Contact Us
 T: 626-454-8300 10141 Olney Street
 F: 626-454-8399 El Monte, CA 91731
 www.lalighting.com Made in the USA



Due to continued product improvements and enhancements, Los Angeles Lighting Manufacturing Company reserves the right to alter specifications, dimensions, data, and/or materials without notice. Please visit our website to view the most current information.

© 2024 LOS ANGELES LIGHTING MANUFACTURING CO. ALL RIGHTS RESERVED.

Revised 11/11/24



MADE IN THE USA
BAA Compliant

ORDERING INFORMATION

ADDITIONAL OPTIONS AVAILABLE. VISIT WWW.LALIGHTING.COM/RESOURCES FOR MORE INFORMATION

EXAMPLE: CIT400-8-4L-DRFA-WL-BPL1.5-DRDM-UNV-2/840HT

SERIES	NOMINAL LED LUMENS	NOMINAL LENGTH	OPTICAL	RATING	MECHANICAL	CONTROLS / ELECTRICAL	DRIVER	VOLTAGE	# OF LED ROWS	CRI / CCT	AMBIENT TEMP
CIT400				WL					2		
CIT400 • 14 1/2" Wide Fully Gasketed Vapor Tight Luminaire	4 - 4000lm 6 - 6000lm 8 - 8000lm 12 - 12000lm High Efficacy 4HE - 4000lm 6HE - 6000lm 12HE - 12000lm	2L • 2'	DRFA • High Impact Smooth Acrylic Frosted Lens FPC • Impact Resistant Frosted Polycarbonate	WL • Wet Location Hardware (Includes 1 Pre-Installed Watertight Hub)	SZ • Splash Zone Certification WTHUB • Second Pre-Installed Watertight Hub TP • Stainless Steel Tamper Proof Screws LT • Lens Tethers *Leave blank if not specified	MS(xx) • Motion Sensor • Lens Option WLC(LED RU) • Wireless Control BPL1.5 • 1500lm Emergency Battery Pack *Leave blank if not specified	DRDM • 0-10V Dimming Driver	UNV • 120V - 277V 120V • 120 Volt 277V • 277 Volt 347V • 347 Volt 480V • 480 Volt	2 • 2 LED Rows	827 • 80+CRI / 2700K 830 • 80+CRI / 3000K 835 • 80+CRI / 3500K 840 • 80+CRI / 4000K 850 • 80+CRI / 5000K 865 • 80+CRI / 6500K 8TW • 80+CRI Tunable White 2700K-6500K 90CRI Also available Contact customer service for additional CRI/CCT packages.	HT • High Ambient Temp. *HT cannot be combined with HE systems
	8 - 8000lm 12 - 12000lm 16 - 16000lm 24 - 24000lm 32 - 32000lm High Efficacy 8 - 8000lm 12 - 12000lm 24 - 24000lm	4L • 4'									
Standard options for CIT400 shown above. For additional options, including lumen packages, controls, lenses, switches, finishes, and more, visit www.lalighting.com/resources or contact customer service.											

OPTICAL OPTIONS

ADDITIONAL LENSES AVAILABLE. VISIT WWW.LALIGHTING.COM/RESOURCES FOR MORE INFORMATION

STANDARD LENSES FOR CIT400

DRFA	Impact-Resistant Smooth Acrylic Frosted
FPC	Impact-Resistant Polycarbonate Smooth Frosted

ADDITIONAL LENSES FOR CIT400

CPC	Impact-Resistant Clear Polycarbonate
DRCA	Impact-Resistant Smooth Clear Acrylic



Los Angeles Lighting Mfg. Co.
 Contact Us
 T: 626-454-8300
 F: 626-454-8399
www.lalighting.com
 10141 Olney Street
 El Monte, CA 91731
 Made in the USA



Due to continued product improvements and enhancements, Los Angeles Lighting Manufacturing Company reserves the right to alter specifications, dimensions, data, and/or materials without notice. Please visit our website to view the most current information.

© 2024 LOS ANGELES LIGHTING MANUFACTURING CO. ALL RIGHTS RESERVED.

Revised 11/11/24



MADE IN THE USA
 BAA Compliant

MECHANICAL OPTIONS

Pre-installed mechanical options are ordered by adding the suffix to the luminaire description:

CIT400-4-4L-DRFA-WL-WTHUB-DRDM-UNV-2/840

**WATERTIGHT HUB
WTHUB**

- Zinc die cast hub with rubber gasket seal
- Threaded to fit 1/2" pipe
- One pre-installed hub included on all luminaires
- Second pre-installed hub included when specifying WTHUB



TAMPER PROOF SCREWS

- TP**
- Hex Pin Stainless Steel Tamper Proof Screws



LENS TETHERS

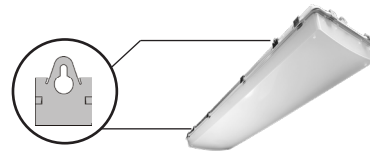
- LT**
- Secure lens to enclosure
 - Includes two tethers per luminaire
 - When ordering separately to install on an existing luminaire, use **CIT4/LT**

MOUNTING ACCESSORIES

Mounting accessories are ordered separately from luminaire

Note:

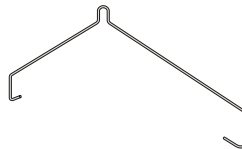
All CIT400 series products come with four stainless steel mounting tabs, two on each side of fixture housing. Tabs can be used with V-hooks, ceiling mount hangers, cable, or chain.



Stainless Steel Mounting Tabs (included with fixture)

**STAINLESS STEEL V-HOOK
CIT4/VH**

- Corrosion-resistant stainless steel V-Hook for suspension mounting
- Hooks work in conjunction with cable suspension systems (CS10) or chain by others
- Two (2) required per fixture



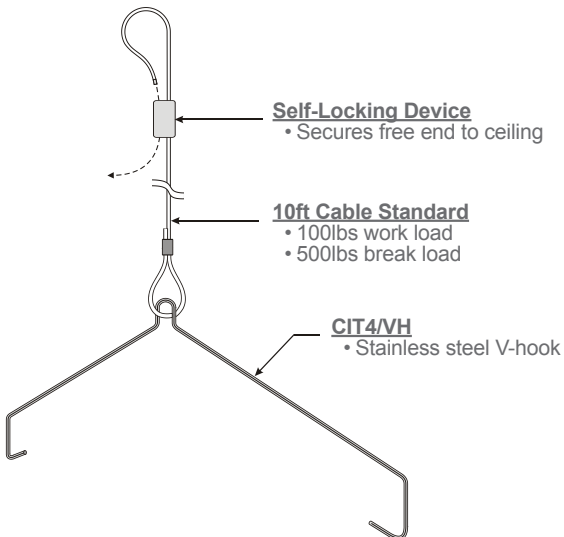
**CEILING MOUNT HANGER
CIT4/CM**

- Corrosion resistant stainless steel for ceiling mount applications
- Two (2) required per fixture



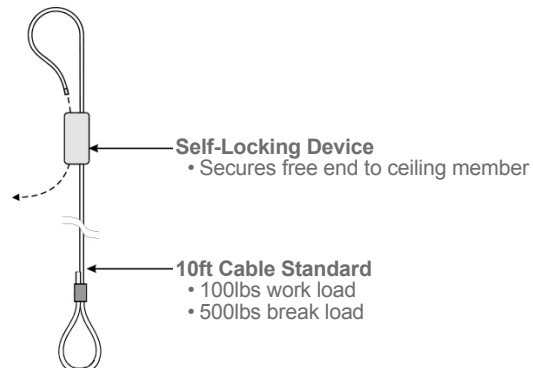
**CABLE SUSPENSION SYSTEMS
CIT4/CS10**

- Cable system kit with V-hooks
- Includes 2x CS10 cable systems and 2x stainless steel V-hooks (CIT4/VH)



**CABLE SUSPENSION SYSTEM
CS10**

- Two (2) required per fixture



Los Angeles Lighting Mfg. Co.
Contact Us
T: 626-454-8300
F: 626-454-8399
www.lalighting.com
10141 Olney Street
El Monte, CA 91731
Made in the USA



Due to continued product improvements and enhancements, Los Angeles Lighting Manufacturing Company reserves the right to alter specifications, dimensions, data, and/or materials without notice. Please visit our website to view the most current information.

© 2024 LOS ANGELES LIGHTING MANUFACTURING CO. ALL RIGHTS RESERVED.

Revised 11/11/24



MADE IN THE USA
BAA Compliant

SYSTEM DATA

ADDITIONAL LUMEN PACKAGES AVAILABLE. CONTACT CUSTOMER SERVICE FOR MORE INFORMATION

2' - LED LUMEN PACKAGE	NORMAL AMBIENT TEMPERATURE PRODUCT CODE	DELIVERED LUMENS	SYSTEM WATTS	LUMINAIRE EFFICACY	AMBIENT TEMP.	FLUORESCENT EQUIVALENT	IES FILES
4000 Lumens (Nominal)	CIT400-4-2L-DRFA-DRDM-UNV-2/840	3822	26.7	143.1 lm/W	-20°C / 35°C (-4°F / 95°F)	4-F17T8 2-F24T5HO	*
6000 Lumens (Nominal)	CIT400-6-2L-DRFA-DRDM-UNV-2/840	5953	43.6	136.3 lm/W	-20°C / 35°C (-4°F / 95°F)	6-F17T8 3-F24T5HO	*
8000 Lumens (Nominal)	CIT400-8-2L-DRFA-DRDM-UNV-2/840	7748	50.8	152.3 lm/W	-20°C / 35°C (-4°F / 95°F)	4-F24T5HO 2-F54T5HO	*
12000 Lumens (Nominal)	CIT400-12-2L-DRFA-DRDM-UNV-4/840	11257	74.9	150.2 lm/W	-20°C / 35°C (-4°F / 95°F)	6-F24T5HO 3-F54T5HO	*
2' - LED LUMEN PACKAGE	NORMAL AMBIENT TEMPERATURE (HIGH EFFICACY) PRODUCT CODE	DELIVERED LUMENS	SYSTEM WATTS	LUMINAIRE EFFICACY	AMBIENT TEMP.	FLUORESCENT EQUIVALENT	IES FILES
4000 Lumens (Nominal)	CIT400-4HE-2L-DRFA-DRDM-UNV-2/840	3742	23.4	159.5 lm/W	-20°C / 35°C (-4°F / 95°F)	4-F17T8 2-F24T5HO	*
6000 Lumens (Nominal)	CIT400-6HE-2L-DRFA-DRDM-UNV-2/840	6017	38.4	156.7 lm/W	-20°C / 35°C (-4°F / 95°F)	6-F17T8 3-F24T5HO	*

4' - LED LUMEN PACKAGE	NORMAL AMBIENT TEMPERATURE PRODUCT CODE	DELIVERED LUMENS	SYSTEM WATTS	LUMINAIRE EFFICACY	AMBIENT TEMP.	FLUORESCENT EQUIVALENT	IES FILES
8000 Lumens (Nominal)	CIT400-8-4L-DRFA-DRDM-UNV-2/840	8032	66.7	120.5 lm/W	-20°C / 35°C (-4°F / 95°F)	4-F32T8 2-F54T5HO	*
12000 Lumens (Nominal)	CIT400-12-4L-DRFA-DRDM-UNV-2/840	11482	102.2	112.3 lm/W	-20°C / 35°C (-4°F / 95°F)	6-F32T8 3-F54T5HO	*
16000 Lumens (Nominal)	CIT400-16-4L-DRFA-DRDM-UNV-2/840	15498	107.6	144.1 lm/W	-20°C / 35°C (-4°F / 95°F)	4-F54T5HO 400W MH	*
24000 Lumens (Nominal)	CIT400-24-4L-DRFA-DRDM-UNV-4/840	22962	209.3	109.7 lm/W	-20°C / 35°C (-4°F / 95°F)	6-F54T5HO 400W MH	*
32000 Lumens (Nominal)	CIT400-32-4L-DRFA-DRDM-UNV-4/840	22962	209.3	109.7 lm/W	-20°C / 35°C (-4°F / 95°F)	6-F54T5HO 400W MH	*
4' - LED LUMEN PACKAGE	NORMAL AMBIENT TEMPERATURE (HIGH EFFICACY) PRODUCT CODE	DELIVERED LUMENS	SYSTEM WATTS	LUMINAIRE EFFICACY	AMBIENT TEMP.	FLUORESCENT EQUIVALENT	IES FILES
8000 Lumens (Nominal)	CIT400-8HE-4L-DRFA-DRDM-UNV-2/840	7936	51.8	153.1 lm/W	-20°C / 35°C (-4°F / 95°F)	4-F32T8 2-F54T5HO	*
12000 Lumens (Nominal)	CIT400-12HE-4L-DRFA-DRDM-UNV-2/840	11773	79.3	148.5 lm/W	-20°C / 35°C (-4°F / 95°F)	6-F32T8 3-F54T5HO	*
24000 Lumens (Nominal)	CIT400-24HE-4L-DRFA-DRDM-UNV-4/840	23547	158.5	148.5 lm/W	-20°C / 35°C (-4°F / 95°F)	6-F54T5HO 400W MH	*
4' - LED LUMEN PACKAGE	NORMAL AMBIENT TEMPERATURE (HIGH EFFICACY) PRODUCT CODE	DELIVERED LUMENS	SYSTEM WATTS	LUMINAIRE EFFICACY	AMBIENT TEMP.	FLUORESCENT EQUIVALENT	IES FILES
8000 Lumens (Nominal)	CIT400-8-4L-DRFA-DRDM-UNV-1/840HT	7646	48.3	158.3 lm/W	-30°C / 45°C (-22°F / 113°F)	4-F32T8 2-F54T5HO	*
12000 Lumens (Nominal)	CIT400-12-4L-DRFA-DRDM-UNV-1/840HT	11711	75.7	154.6 lm/W	-30°C / 45°C (-22°F / 113°F)	6-F32T8 3-F54T5HO	*
24000 Lumens (Nominal)	CIT400-24-4L-DRFA-DRDM-UNV-2/840HT	23304	151.4	153.8 lm/W	-30°C / 45°C (-22°F / 113°F)	6-F54T5HO 400W MH	*

NOTE:
 System data is based on 120V input voltage. Actual performance may differ as a result of end-user environment and application.
 This fixture has been tested and listed in accordance with UL Standards. L.A. Lighting certifies that it will operate safely when installed properly, and within an ambient temperature range noted in the system data table.
 Additional lumen packages and color temperatures available.



Los Angeles Lighting Mfg. Co.
 Contact Us
 T: 626-454-8300
 F: 626-454-8399
 www.lalighting.com
 10141 Olney Street
 El Monte, CA 91731
 Made in the USA



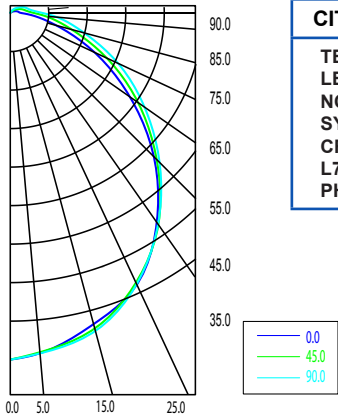
Due to continued product improvements and enhancements, Los Angeles Lighting Manufacturing Company reserves the right to alter specifications, dimensions, data, and/or materials without notice.
 Please visit our website to view the most current information.

© 2024 LOS ANGELES LIGHTING MANUFACTURING CO. ALL RIGHTS RESERVED.

Revised 11/11/24



PHOTOMETRIC DATA



CIT400-12-4L-DRFA-DRDM-UNV-2/840

TEST NO. = LA-T3205-1
 LED TYPE = 48 LED MODULE
 NO. OF MODULE = 4
 SYSTEM WATT (W) = 102.2
 CRI ≥ 80
 L70(Hrs.) ≥ 50,000
 PHOTOMETRY TYPE = C

ZONAL LUMEN SUMMARY			
DEGREES	LUMENS	% LAMP	% FIXTURE
0-30	3069	25.0	26.7
0-40	4955	40.4	43.1
0-60	8455	69.0	73.3
0-90	10867	88.7	94.6
90-120	506.8	4.1	4.4
90-150	612.5	5.0	5.3
90-180	614.1	5.1	5.3
0-180	11482	93.7	100.0

SPACING CRITERION	
ALONG	ACROSS
1.19	1.19

Luminaire Output = 11482 lumens
 Luminaire Efficacy = 112.3 lm/W
 Luminaire Efficiency = 0.76%



Los Angeles Lighting Mfg. Co.
 Contact Us
 T: 626-454-8300
 F: 626-454-8399
 www.lalighting.com

10141 Olney Street
 El Monte, CA 91731
 Made in the USA



Due to continued product improvements and enhancements, Los Angeles Lighting Manufacturing Company reserves the right to alter specifications, dimensions, data, and/or materials without notice. Please visit our website to view the most current information.

© 2024 LOS ANGELES LIGHTING MANUFACTURING CO. ALL RIGHTS RESERVED.

Revised 11/11/24



MADE IN THE USA
 BAA Compliant